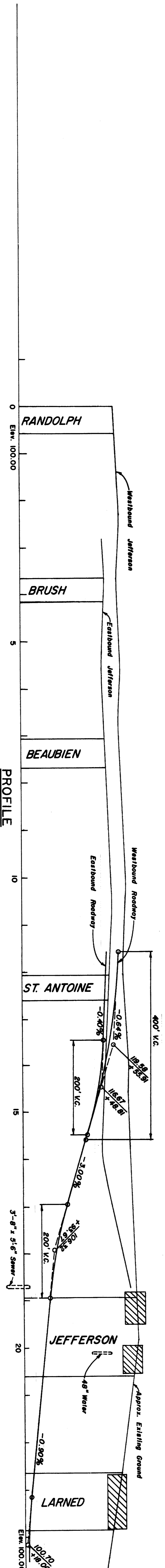


E. JEFFERSON Beaubien to Chrysler Fwy., I-375
 (see Chrysler Fwy. for full set) #897A



NOTE

Min. Bridge Underclearance:
 14.5' over Pavement
 14.0' over Refuge Shoulder

DESIGNED BY	APPROVED	CITY OF DETROIT DEPARTMENT OF PUBLIC WORKS CITY ENGINEERS OFFICE BUREAU OF HIGHWAYS AND EXPRESSWAYS	WALTER P. CHRYSLER EXPRESSWAY GENERAL PLAN AND PROFILE RANDOLPH TO HASTINGS
DRAWN BY	CITY ENGINEER		
REVISIONS & REDRAWN	CHECKED BY	SHEET <u> </u> OF <u> </u> SHEETS JOB No. 897-A DRWG NO. C-201 DATE 5-12-61	
DESCRIPTION	DATE		
REVISIONS LOCATED BY COORDINATES ON SHEET			