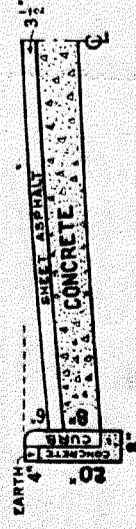


CROSS SECTIONS



ONE COURSE CONCRETE WITH CONCRETE CURB

SHEET ASPHALT ON CONCRETE WITH STONE CURB

AT NO.	A	CIRCLES	Rod.	10m.	Arc.	Seg.

QUANTITIES	LOTS	CITY	LOTS	CITY
EXCAVATION				
STRAIGHT CURB-NEW				
OLD CURB RESET				
CIRCULAR CURB				
PAVING				
CONCRETE BASE				
STONE HEADER				

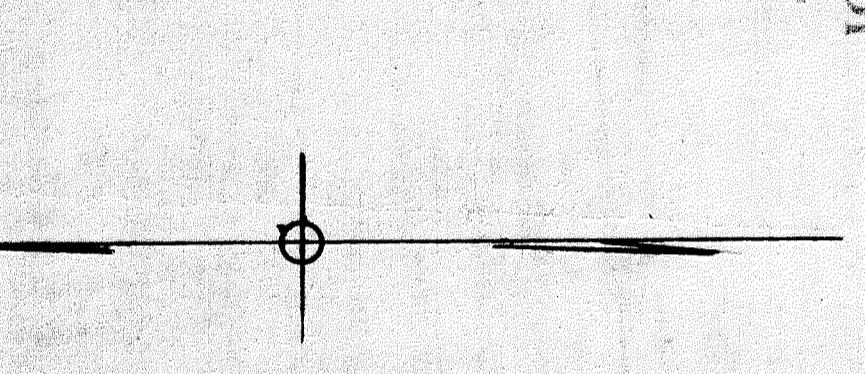
Hor. Scale	1" = 100'	Dk. 884 B.	65
Ver. Scale	1" = 10'	Date	FEB 9 1930
Plan	H.S.	Profile	4.5 Comp.
Checked	L.R.	Grade	W
Lots (21)	119.52	Length	559.76
City	118.50		5925
Total	1238.22		61907
Cost Advertising Planks		LOTS	CITY
Cost Inspection			

CARD NO.
 RECORD NO.

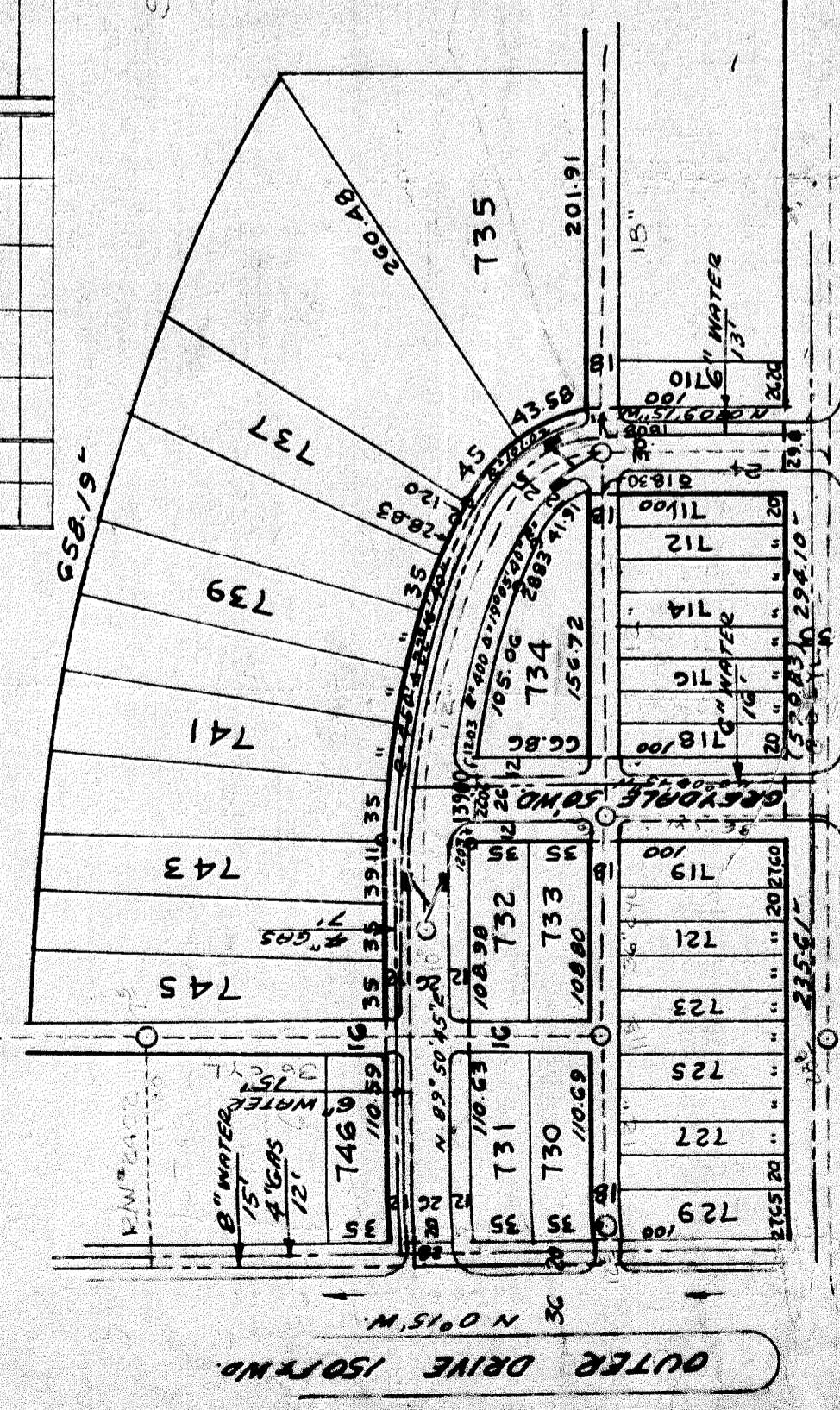
DEPARTMENT OF PUBLIC WORKS DETROIT MICH.
 CITY ENGINEER'S OFFICE - DIVISION OF PAVING DESIGN
 STREET PAVING PLAN
 NAME OF STREET: JASON 50 FT
 FROM: SCHOOLCRAFT
 TO: OUTER DRIVE
 TYPE OF PAVEMENT: FEET WIDE

SEWERS O.K. BY *J. Lipah*

B.M. # 369 SPIKE IN 24" ELM & SCHOOLCRAFT W.L. OUTER DRIVE → 147.42
 B.M. # "X" IN LT. BASE N.E. COR. JASON & OUTER DRIVE → 142.75



DESIGNED BY	<i>C. Spillman</i>
DRAWN BY	<i>C. Spillman</i>
TRACED BY	<i>C. Spillman</i>
CHECKED BY	<i>C. Spillman</i>
APPROVED	<i>W. Wallace</i>
	ENGINEER OF STREETS
	<i>Walter R. Fisher</i>
	ASST. CITY ENGINEER



AT NO.	1	2	3	4	5	6	7	8	9	10	11	12	13	14	15	16	17	18	19	20
14217	14236	14255	14274	14293	14312	14331	14350	14369	14388	14407	14426	14445	14464	14483	14502	14521	14540	14559	14578	14597
14217	14236	14255	14274	14293	14312	14331	14350	14369	14388	14407	14426	14445	14464	14483	14502	14521	14540	14559	14578	14597
14217	14236	14255	14274	14293	14312	14331	14350	14369	14388	14407	14426	14445	14464	14483	14502	14521	14540	14559	14578	14597

JOB-NO. D-2067

