

SEWER	OLD MAP 1941
REVISIONS	
C-327	C-586
C-326A	C-585
C-325	C-524
C-324A	C-390
SUPPLEMENTARY DETAILS	
C-739B	C-739B
C-733	C-733
C-739	C-739
C-739A	C-739A

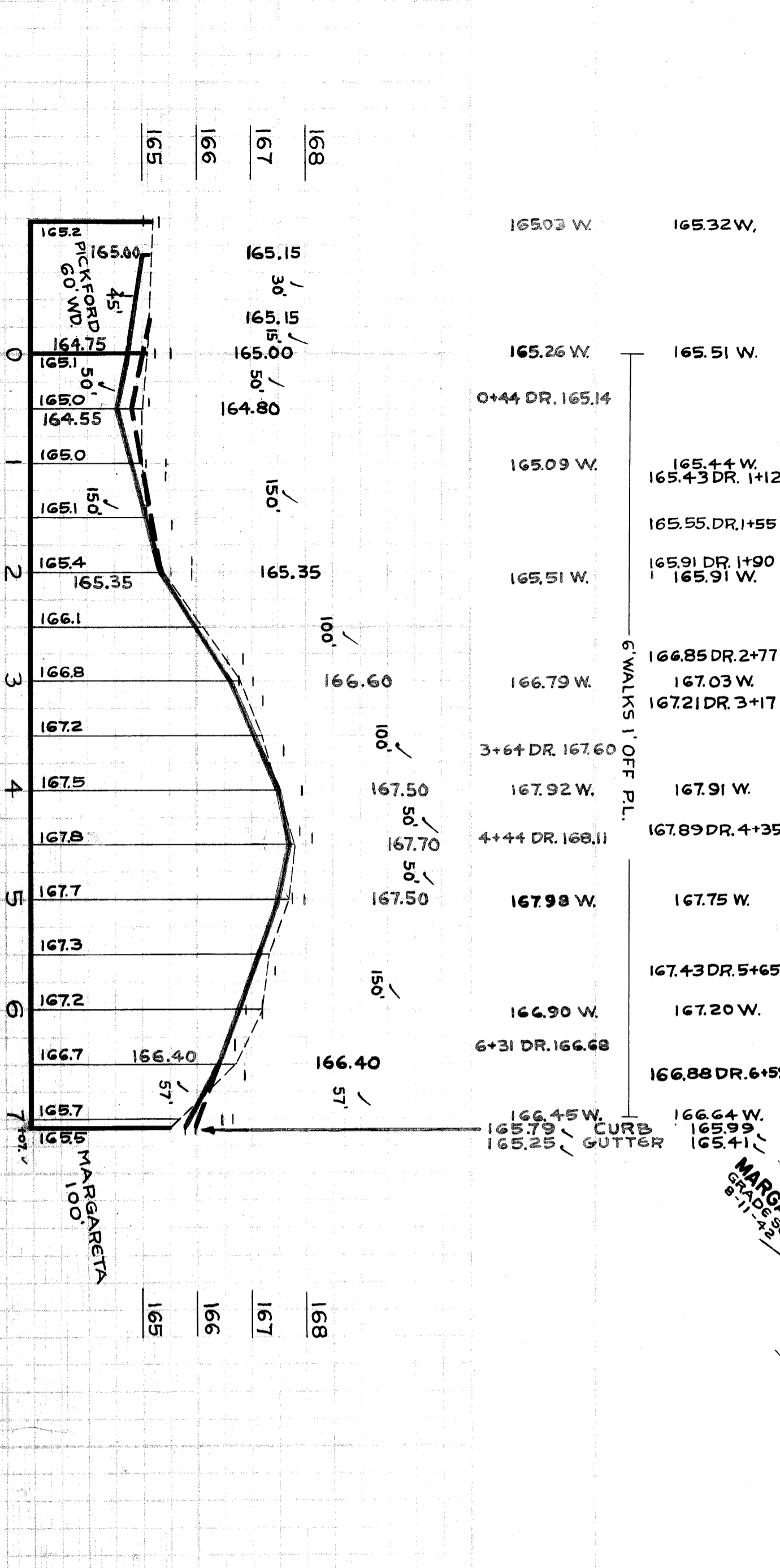
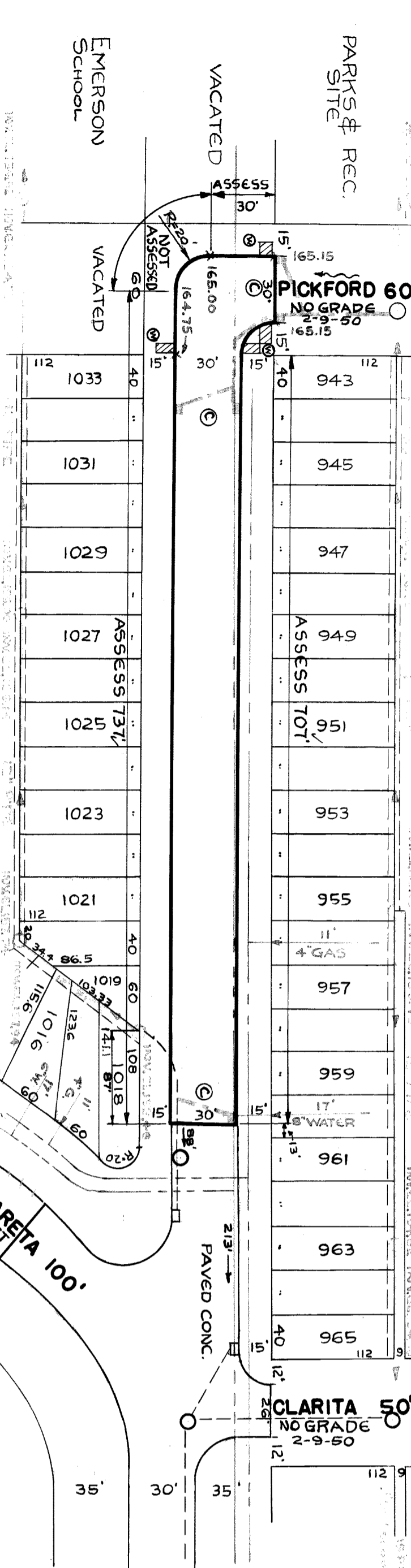
NOTE:
 BEFORE STARTING CONSTRUCTION CONTRACTOR MUST CHECK WITH UTILITIES FOR LOCATIONS OF EXISTING STRUCTURES (WETTERS OR NOT INDICATED ON PLANS)
 PLAN SCALE DISTORTED
 LOTS & ALLEYS 1"=100'
 STREET WIDTHS 1"=50'
 DRAINAGE COMPLETED
 PAVING COMPLETED C.C. 9-19-50

QUANTITIES	ESTIMATED	FINAL
EXCAVATION CU. YDS.	1029	1029
NEW CURB LIN. FT.	2435	2435
PAVING 8" CONC. 192 YDS.	103	103
6 CONC. DR. SQ. FT.	103	103
6 CONC. DR. SQ. FT.	103	103
MANHOLES ADJUST	192	192
MANHOLES CONSTRUCT	103	103
ADJUST CONSTRUCT	212	212
CONSTRUCT	W-0	W-0
SEWER BASINS	265	265
SEWER BASINS CONSTRUCT	305	305

SCALE	1"=100'
DATE	11-30-49
DATE CHECKED	2-11-50
PLAN	S.B.
PROFILE	S.B.
CHECKED	J.E.
CONTRACT NO.	1519
LOT NO.	737
CITY	2250
STATE	75950

DESIGNED BY
 DRAWN BY
 TRACED BY
 CHECKED BY
 APPROVED BY
 ENGINEER OF STREET
 ASSIST. CIVIL ENGINEER

DEPARTMENT OF PUBLIC WORKS DETROIT
 CITY ENGINEERS' OFFICE - DIVISION OF PAVING DESIGN
 STREET PAVING PLAN
 325A-J-9
 SHEET 1 OF 1
 RECORD NO. 72 114
 NAME OF STREET HUNTINGTON
 FROM 15' N. SPL. PICKFORD
 TO 707' N.N.P.L. PICKFORD
 BENCH MARKS
 P.C.T. # 1006 JOS. B. ANSTETT 3-28-50
 ELEV. 1611.04



NOTE: PL. OFFSET 5 FT. TO + IN WALK.
 NOTES
 (C) CONSTRUCT 5 STD PIPE CATCH BASINS WITH STD FRAMES & GRATES, AS REQUIRED. CONNECT TO EXISTING OUTLETS AS SHOWN. SEE STD DRWG C-326A & C-524.
 (M) CONSTRUCT 192 SQ. FT. OF STANDARD 4" SIDEWALK.
 (A) ADJUST TOP OF 1 WATER MANHOLE.
 BACKFILL SEWER PIPE TRENCHES UNDER PROPOSED PAVEMENT WITH APPROVED SAND-GRAVEL MATERIAL, ELSEWHERE FILL & TAMP WITH APPROVED EARTH LAYERS AS REQUIRED.
 DIRT ROADWAY AT END OF PAVEMENT SHALL BE GRADED BACK & STONED 6" DEEP UNIFORMLY FOR A DISTANCE OF 10 FT. TO MEET EXISTING GRADES. 2/ CU.YDS. INCLUDED UNDER EXCAVATION TOTALS FOR COST.
 ALL CURBS WITHIN STREET INTERSECTIONS TO BE SEPARATE TYPE II OR INTEGRAL TYPE III, EXCEPT AS OTHERWISE NOTED.

94547