

SWITCH	OLD MAP 1941
REVISIONS	10-17-49 13' ADDED TO SOUTH END OF JOB. ACCESS LOTS, CURB 12'-9" ADDED AS CURB EXCAV. # 55 SQ. YDS. 8' PAVE TO CITY. EST. QUANTITIES.
C-124	C-385
C-124	C-385
C-124	C-385
C-124	C-385
C-124	C-385

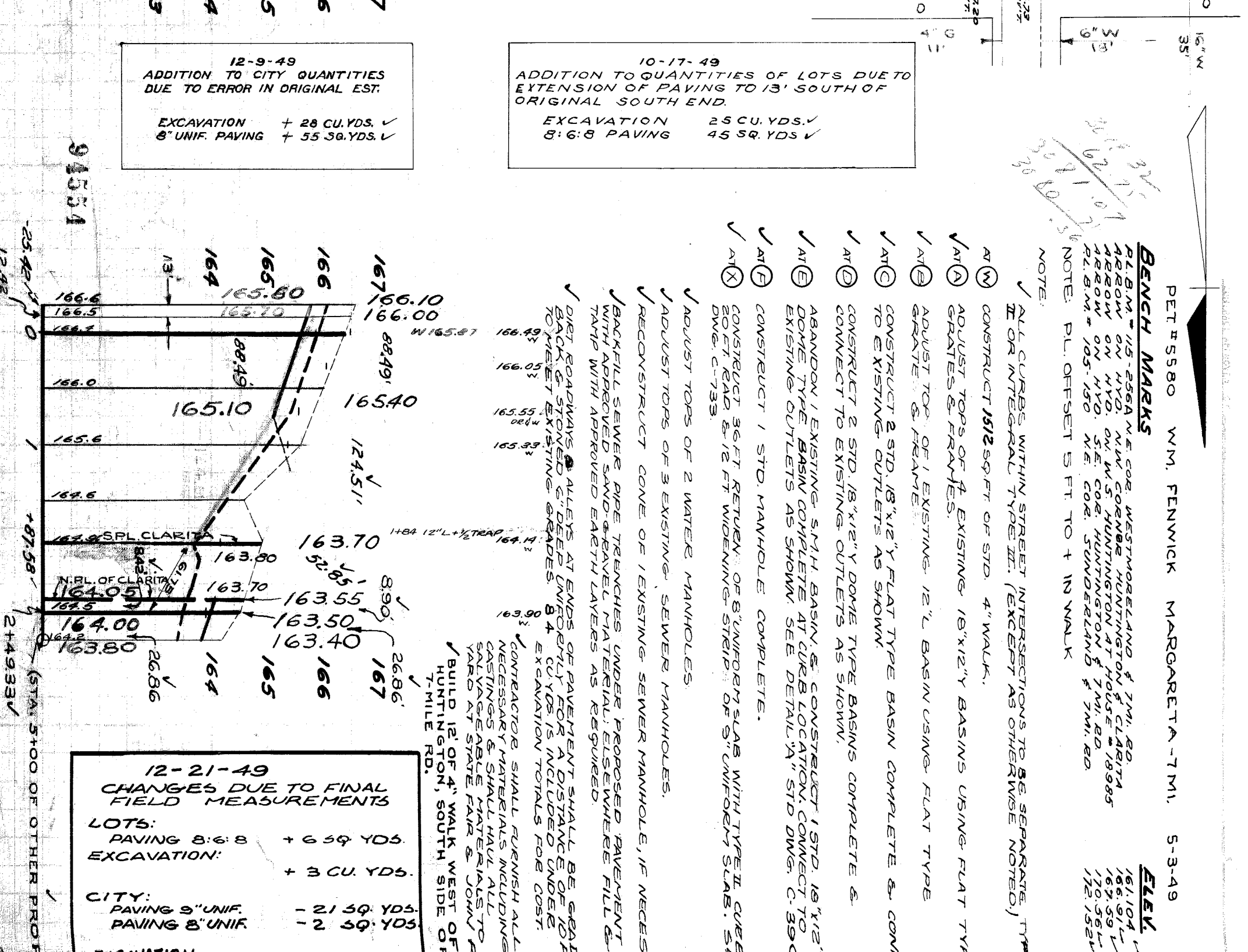
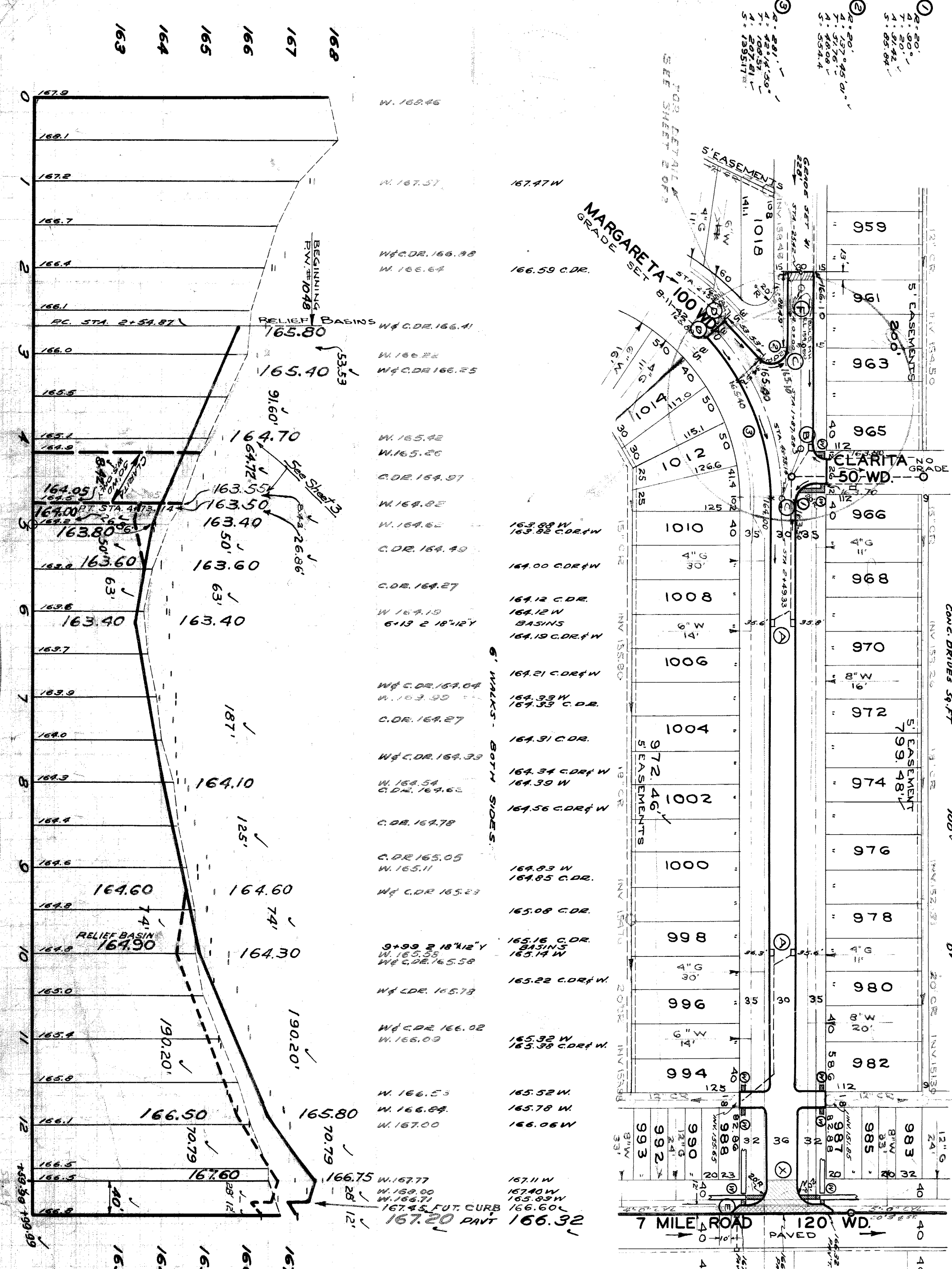
DATE	10-17-49
SCALE	1"=100'
PROJECT	STREET PAVING PLAN
CONTRACT	49-26
DESIGNED BY	L.G. VAN TUYL
DRAWN BY	W. Gordon
CHECKED BY	R. R. Room
APPROVED BY	M. R. Room
DATE	7-16-49

QUANTITIES	EXCAVATION	PAVING	MANHOLE CONSTRUCTION	SEWER	WALKS	REPAIRS
2528	1086	2553	1106	193	138	182
5413	182	5458	751	1082	1029	767
8' UNIF.	1029	1029	1082	1082	1029	767
9' UNIF.	319	319	319	319	319	319
4"	984	984	984	984	984	984
CONC. DRIVES 5'-FT	400	400	400	400	400	400

DATE	7-16-49
SCALE	1"=2'
PROJECT	STREET PAVING PLAN
CONTRACT	49-26
DESIGNED BY	L.G. VAN TUYL
DRAWN BY	W. Gordon
CHECKED BY	R. R. Room
APPROVED BY	M. R. Room
DATE	7-16-49

*M. R. Room*  
*W. Gordon*  
 ASSISTANT ENGINEER  
 ASSISTANT ENGINEER

DEPARTMENT OF PUBLIC WORKS DEPARTMENT  
 CITY ENGINEERS OFFICE - DIVISION OF PAVING DESIGN  
**STREET PAVING PLAN**  
**HUNTINGTON**  
 213' S. OF S.P.L. CLARITA ✓  
 40 N. OF S.P.L. 7 MILE ROAD ✓  
 325 Y-12  
 5580  
 30'±36'



NOTE: ALL CURBS WITHIN STREET INTERSECTIONS TO BE SEPARATE TYPE II OR INTERMEDIATE TYPE III. (EXCEPT AS OTHERWISE NOTED.)  
 (A) ADJUST TOPS OF 4' EXISTING 18"x12"Y BASINS USING FLAT TYPE GRATES & FRAMES.  
 (B) ADJUST TOP OF 1' EXISTING 12" L. BASIN USING FLAT TYPE GRATES & FRAMES.  
 (C) ADJUST TOPS OF 2 STD. 18"x12"Y FLAT TYPE BASIN COMPLETE & CONNECT TO EXISTING OUTLETS AS SHOWN.  
 (D) CONSTRUCT 2 STD. 18"x12"Y DOME TYPE BASINS COMPLETE & CONNECT TO EXISTING OUTLETS AS SHOWN.  
 (E) ABANDON 1 EXISTING 5"x11" BASIN & CONSTRUCT 1 STD. 18"x12"Y DOME TYPE BASIN COMPLETE AT CURB LOCATION, CONNECT TO EXISTING OUTLETS AS SHOWN. SEE DETAIL "A" STD DWG. C-39-C.  
 (F) CONSTRUCT 1 STD. MANHOLE COMPLETE.  
 (G) CONSTRUCT 36" FT RETIEN OF 8" UNIFORM SLAB WITH TYPE II CURBS, SOFT LEAD & 12 FT WIDENING STRIP OF 8" UNIFORM SLAB. SEE DWG. C-753.  
 (H) ADJUST TOPS OF 2 WATER MANHOLES.  
 (I) ADJUST TOPS OF 3 EXISTING SEWER MANHOLES.  
 (J) RECONSTRUCT CONE OF 1 EXISTING SEWER MANHOLE, IF NECESSARY BACKFILL SEWER PIPE TRENCHES UNDER PROPOSED PAVEMENT. RECONSTRUCT EXISTING MANHOLES WITH APPROVED EARTH LAYERS AS REQUIRED.  
 (K) DIRT ROADWAYS & ALLEYS AT ENDS OF PAVEMENT SHALL BE GRADED BACK TO EXISTING GRADES. 8" UNIFORM SLAB SHALL BE UNDER EXCAVATION TOTALS FOR COST.  
 (L) CONTRACTOR SHALL FURNISH ALL NECESSARY MATERIALS INCLUDING CASTINGS & SHALL HALL ALL SALVAGEABLE MATERIALS TO YARD AT STATE PARK & JOHNS HUNTINGTON, SOUTH SIDE OF 7-MILE RD.