

SEWER GRADE CHANGED, DRAINAGE MANHOLES CHANGED 1500'S OF VASSAR AVE. SUPPLEMENTARY DETAILS DRAWING NO.

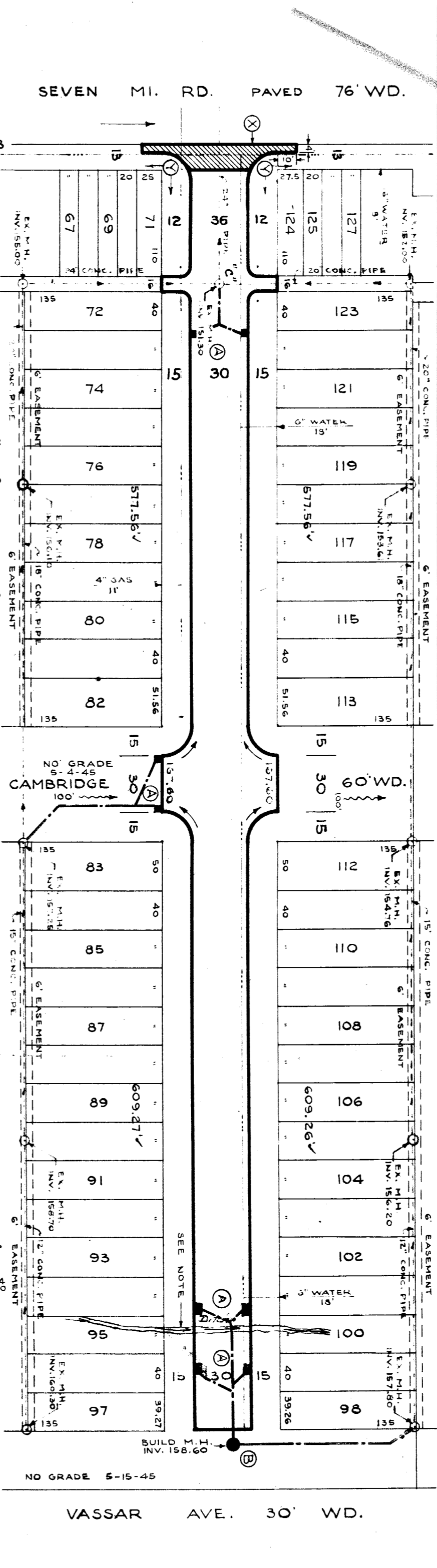
NOTE: BEFORE STARTING CONSTRUCTION CONTRACTOR MUST CHECK WITH UTILITIES FOR LOCATIONS OF EXISTING STRUCTURES WHETHER OR NOT INDICATED ON PLANS.
 PLAN SCALE DISTORTED
 LOTS & ALLEYS 1" = 100'
 STREET WIDTHS 1" = 50'
 DRAINAGE COMPLETED
 PAVING COMPLETED

QUANTITIES	ESTIMATED	CITY	FINAL
EXCAVATION CU YDS.	2 1/2	253	
NEW CURB LIN. FT.	2 3/4	199	
PAVING SQ. YDS.	3 9/32	505	
SIDEWALK SQ. FT.	1	144	
MANHOLES ADJUST	1	1	
CONSTRUCT	5	7	
SEWERS 8" LIN. FT.	540	70	
SEWERS 6" LIN. FT.		60	

HOR. SCALE 1" = 100'	VER. SCALE 1" = 2'	BOOK 1574 PAGE 15
DATE 5-21-45	PLAN C.L.M.	PROFILE C.L.M.
CHECKED 5.5	GRADE R3	CHECKED 5.5
LOT 2L 2341.65	LENGTH 1770.82	CITY 1170.82
LOT 2L 178.00	LENGTH 89.00	CITY 89.00
TOTAL 2L 2519.65	LENGTH 1259.82	CITY 1259.82

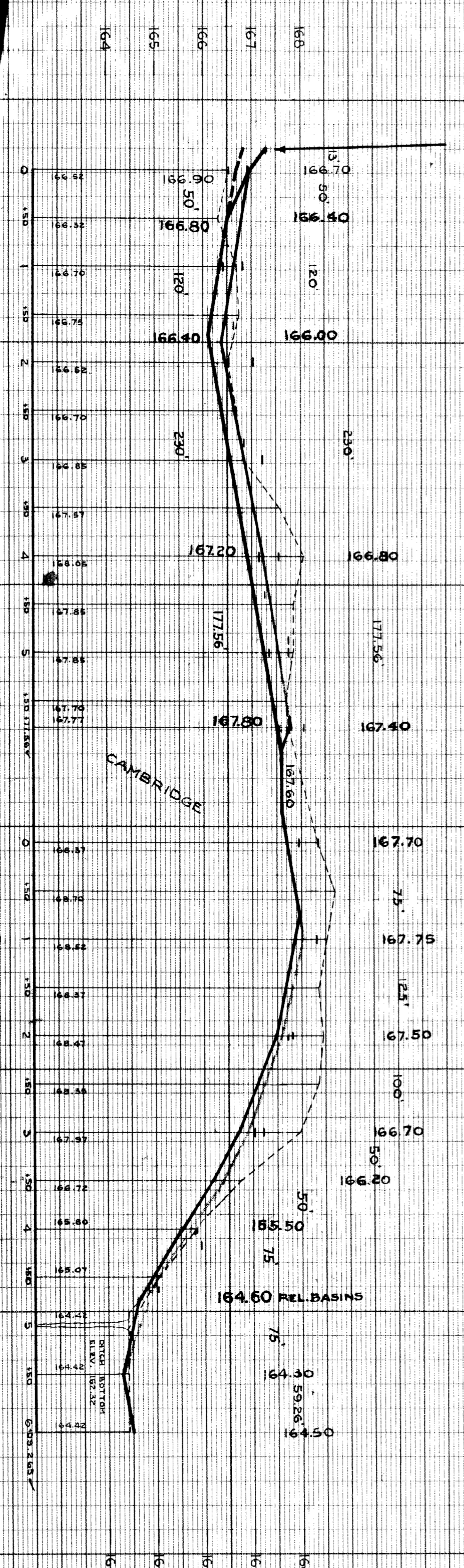
DESIGNED BY \$5
 DRAWN BY C. HENDERSON
 CHECKED BY S.S.
 APPROVED BY S.S.
 ASSIST. CITY ENGINEER

DEPARTMENT OF PUBLIC WORKS DETROIT
 CITY ENGINEERS' OFFICE - DIVISION OF PAVING DESIGN
 STREET PAVING PLAN
 HUNTINGTON
 13 S. OF N.P.L. OF 7 MI. RD.
 S.P.L. OF VASSAR
 AP. 61-89
 CARD NO. 72 115
 RECORD NO. 1
 TYPE OF PAVEMENT 30' & 36'



166.92 PAV. 166.41
 167.32 FUT. CURB 166.83

WK. 166.82	WK. 166.42	S.D.R. 166.82+60
WK. 167.02	WK. 166.52	S.D.R. 166.82+82
WK. 167.22	WK. 166.82	S.D.R. 166.82+20
WK. 167.57	WK. 167.17	S.D.R. 162.27+40
87 S.D.R. 167.77	WK. 167.77	WK. 167.37
WK. 168.07	WK. 167.57	WK. 167.57
WK. 168.37	WK. 167.97	WK. 167.97
WK. 168.37	WK. 168.02	WK. 168.02
WK. 167.72	WK. 167.82	WK. 167.82
WK. 167.02	WK. 167.22	WK. 167.22
WK. 165.82	WK. 165.82	S.D.R. 165.92+16
WK. 165.02	WK. 164.82+60	S.D.R. 165.02+54



- NOTES
- BACK-FILL DITCH UNDER PAVEMENT WITH CRUSHED STONE AND TAMP.
 - BACK-FILL DITCH BETWEEN PAVEMENT AND P.L. WITH DIRT.
 - AT 'A' CONSTRUCT 8 STD. 18" DIA. V-BASINS COMPLETE.
 - AT 'B' CONSTRUCT 4 STD. MANHOLES COMPLETE.
 - AT 'X' CONSTRUCT CONCRETE RETURNS & 4" WIDINGS CONCRETE IN 7 MI. RD. TO BE 10" THICK. SEE SPECIAL DETAIL "C-371".
 - AT "C" ADJUST TOP OF 1 EX.M.H.
- BENCH MARKS
- P.B.M. # 14,211 - TRACK SPIKE IN N. SIDE OF 18" MAPLE 155.0 OF 7 MI. RD. & 55' W. OF GRANDVILLE. 171.27
 - B.M. - ARROW TOP OF HYD. ON W. SIDE OF HUNTINGTON 350 N. OF 7 MI. RD. ELEV. 170.27
 - B.M. - ARROW TOP OF HYD. AT N.W. COR. OF HUNTINGTON & CAMBRIDGE. ELEV. 171.11
- AT "V" RAISE WALKS IN 7 MILE & IN HUNTINGTON TO CONFORM TO ESTABLISHED GRADE.