

DEPARTMENT OF PUBLIC WORKS DETROIT
CITY ENGINEERS OFFICE - DIVISION OF PAVING DESIGN
STREET PAVING PLAN

HUBBELL

N.P.L. OF NORFOLK
31' N. OF SPL. OF EIGHT MILE ROAD

RECORD NO. **64 87**

DATE: 10-8-10

UCC PG. 3-417 12-12-50

BENCH MARKS
ELEVATION
RLM#87-254 N.W.COE HUBBELL & PEMBROKE 181.506
ARE. ON HYD. NE. COE NORFOLK & HUBBELL 188.69
RLM#87-253 S.W.COE HUBBELL & 8 MILE RD 185.262

NOTE: FOR SYMBOLS (A) ETC. SEE STD. DETAIL DRWG. C-327

NOTES:
1. AT (A) CONTRACTOR SHALL SALVAGE AND HAUL ALL MATERIALS FROM EXISTING GUARD RAIL TO D.R.W. SOUNDFIELD YARDS ALL DITCHES UNDER PROPOSED PAVEMENT SHALL BE BACKFILLED WITH APPROVED SAND-GRANULATED MATERIAL COMPACTED IN 6" LAYERS.

TREE SCHEDULE		
NO.	STATION	SIZE (DISTANCE FROM R.L. OF M.P.L.)
1	STA. 0+13	8" (26.5')
2	" 0+13	5" (26.5')
3	" 0+19	6" (31.3')
4	" 0+24.5	10" (32.7')
5	" 0+42	6" (26')
6	" 0+57	10" (27')
7	" 0+82.5	8" (23.8')
8	" 0+90	6" (23.8')
9	" 1+00	8" (27.0')
10	" 1+20	10" (28')
11	" 1+44	10" (30')
12	" 1+55	8" (31.7')
13	" 2+89	12" (28.5')
14	" 2+95	6" (15.5' W. OF EBL)
15	" 3+00	6" (15.5' W. OF EBL)
16	" 3+15	10" (14')
17	" 3+25	8" (13.5' W. OF M.P.L.)
18	" 3+50	6" (11.7' W. OF E.P.L.)
19	" 3+56	8" (11.7' W. OF E.P.L.)
20	" 3+56	8" (30.5' E. OF M.P.L.)
21	" 4+76	36" (34')

NOTE: THIS STREET IS A SECONDARY HIGHWAY. CITY ASSESSORS SHOULD REDISTRIBUTE THE ASSESSED COST ACCORDING TO BENEFITS DERIVED FOR A 30 RESIDENTIAL STREET.

QUANTITY CHANGES	
DUE TO NORFOLK INTERSECTION	
CHANGES 5-16-51	
CITY:	-3 cu yds.
EXCA:	-4 cu yds.
GRAV. FILL:	-10 sq. yds. 5 UNIF.
PAV. AREA:	+24 sq. ft. V. O.B.
WALKS:	

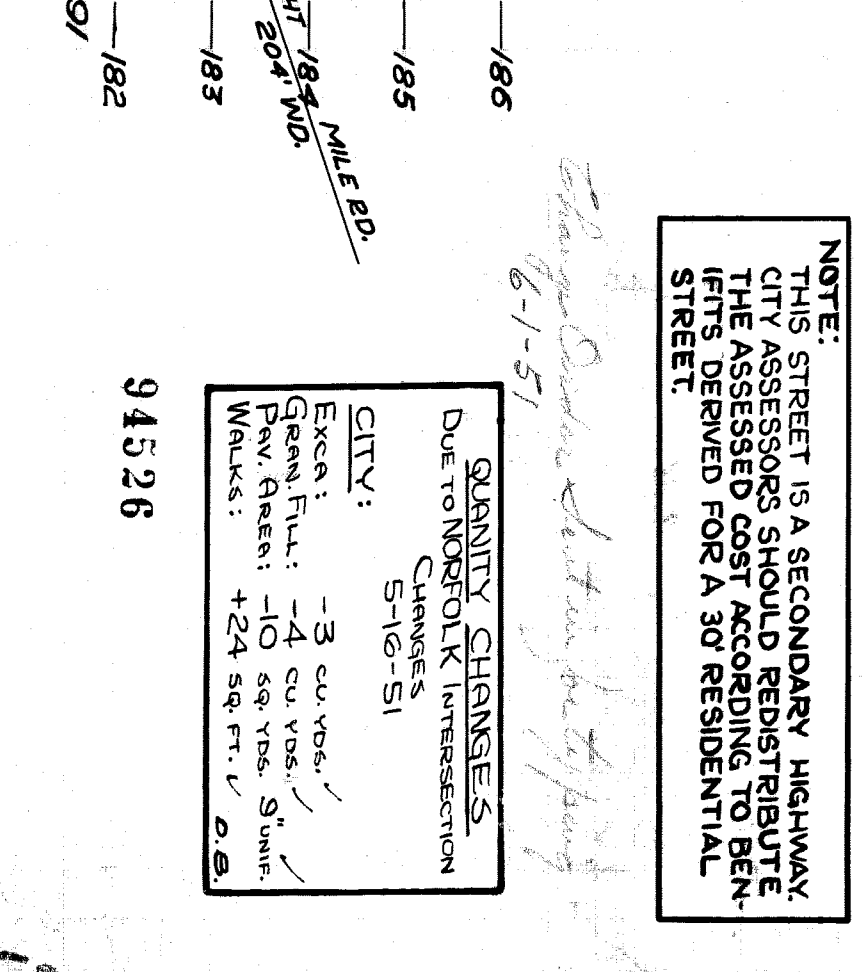
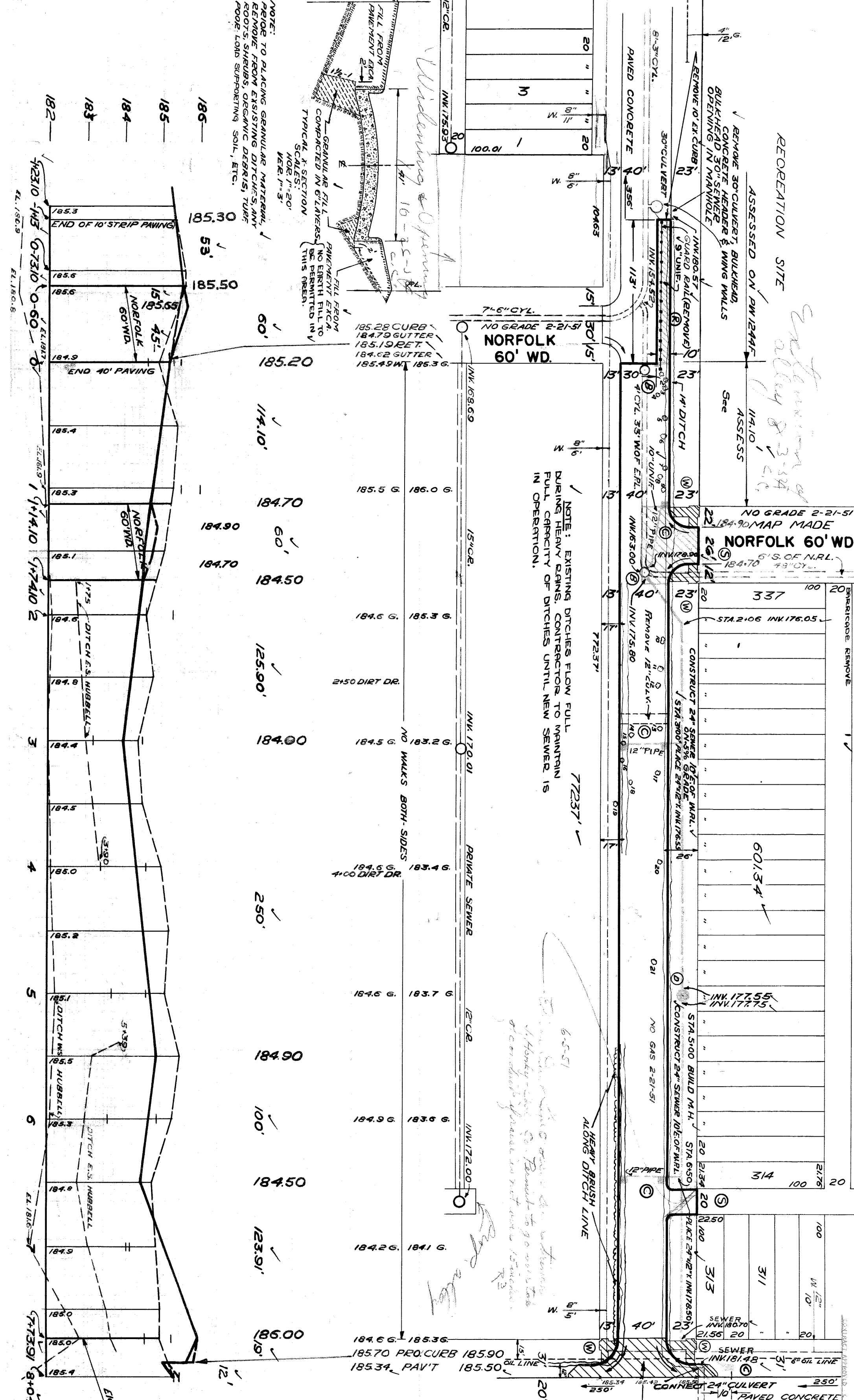
94526

REVISION	OLD MAP 3-30-50
REVISION	NORFOLK INTERSECTION
CHANGED	IG MAY SI N.P.
SUPPLEMENTARY DETAILS	
C-324A	C-367
C-325	C-713
C-326A	C-555
C-327	C-739
	C-1608
	C-739A

QUANTITIES		ESTIMATED		FINAL	
EXCAVATION	CURB	LOT#	CITY	LOT#	CITY
3383	64	1224	152		
480	99				
132	132				
75G	75G				
100	100				
195	195				
655	655				
493	493				

SCALE	1"=60'	PAGE	46
PLAN	C.M.C.	CITY	A.B.
CHECKED	AMB	CITY	AMB
DATE	1/29/51	DATE	2-21-51
NO.	73591	NO.	7100
AREA	146781	AREA	80491
PERIMETER	14200	PERIMETER	80491

DESIGNED BY: *Walter W. M. ...*
DRAWN BY: *C.W. ...*
CHECKED BY: *Sector - Ref. Room*
APPROVED BY: *J.P. ...*
CITY ENGINEER



NOTE: TO PLACING GRANULAR MATERIAL, REMOVE FROM EXISTING DITCHES ALL ROOTS, STUMPS, ORGANIC DEBRIS, WAX, POOR LOAM SUPPORTING SOIL, ETC.