

SEWER	REVISED	OLD MAP	5-18-39
C-327	C-586	C-739A	C-1783
C-324A	C-390	C-587	C-739B
C-325	C-524	C-733	C-938
C-326A	C-585	C-739	C-1608

NOTE:
BEFORE STARTING CONSTRUCTION CONTRACTOR
MUST CHECK WITH UTILITIES FOR LOCATIONS OF
EXISTING STRUCTURES WHETHER OR NOT INDI-
CATED ON PLANS:
PLAN SCALE DISTORTED
LOTS & ALLEYS 1"=100'
STREET WIDTHS 1"=50'
DRAINAGE COMPLETED 6-24-39
PAVING COMPLETED

QUANTITIES	ESTIMATED	FINAL
EXCAVATION CU YDS.	LOTS	CITY
NEW CURB LIN. FT.	CITY	LOTS
PAVING SQ. YDS.	CITY	CITY
SIDEWALK SO. FT.	LOTS	CITY
MANHOLES ADJUST	CITY	LOTS
CONSTRUCT ADJUST	CITY	LOTS
BASINS CONSTRUCT	CITY	LOTS
SEWERS 12" LIN. FT.	CITY	LOTS

NON. SCALE	1"=100'	BOOK 173	PAGE 43
VER. SCALE	1 1/2"=2'	DATE LEVELS	2-22-51
PLAN	J.N.	DATE DRAWING	2-22-54
CHECKED	J.K.	GRADE	N.K.
LENGTH	N.K.	CHECKED	G.B.
CITY	AL.	LENGTH	LOTS
TOTAL 2L	GET SHEET	LENGTH	CITY

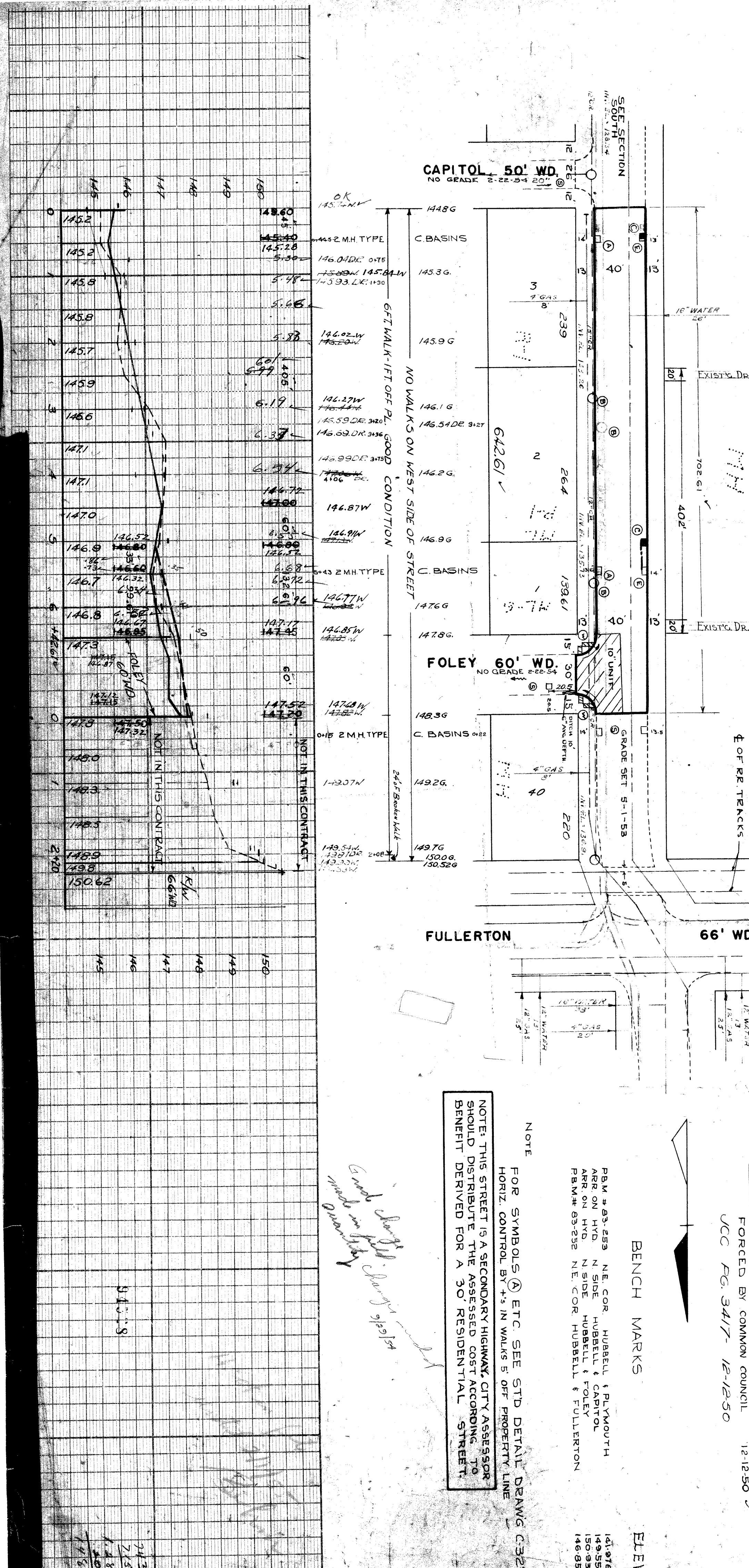
DESIGNED BY	J.P.N.
DRAWN BY	J.P.N.
TRACED BY	J.P.N.
CHECKED BY	J.P.N.
APPROVED	J.P.N.
CITY ENGINEER	J.P.N.

CARD NO.	54-4
INDEX TOPO	70 83
NAME OF STREET	HUBBELL
FROM	N.P.L. OF CAPITOL
TO	N.P.L. OF FOLEY
TYPE OF PAVEMENT	ONE COURSE CONCRETE - INTERNAL CURB
CONTRACT APPROVED - C.C.	FORCED BY COMMON COUNCIL 12-12-50
UCC PG. 3417-12-12-50	
ASSIGN. NO. 355 AS-14	PETITION NO. FORCED
SHEET OF 2	

CAPITOL 50' WD.
NO GRADE 2-22-54 20'

FOLEY 60' WD.
NO GRADE 2-22-54

FULLERTON 66' WD.



NOTE:
FOR SYMBOLS (A) ETC. SEE STD. DETAIL DRAWING C-327
HORIZ. CONTROL BY +3 IN WALKS 5' OFF PROPERTY LINE

NOTE:
THIS STREET IS A SECONDARY HIGHWAY, CITY ASSESSOR
SHOULD DISTRIBUTE THE ASSESSED COST ACCORDING TO
BENEFIT DERIVED FOR A 30' RESIDENTIAL STREET.

BENCH MARKS

P.B.M. # 83-253 N.E. COR. HUBBELL & PLYMOUTH
ARR. ON HYD. N. SIDE HUBBELL & CAPITOL
ARR. ON HYD. N. SIDE HUBBELL & FOLEY
P.B.M. # 83-252 N.E. COR. HUBBELL & FULLERTON

Good change made in field quantity changed 6/26/54

145.2	24.3
145.2	14.8
145.8	2.15
145.8	1.48
145.7	1.48
145.9	1.48
146.6	1.48
147.1	1.48
147.1	1.48
147.0	1.48
146.9	1.48
146.7	1.48
146.8	1.48
147.3	1.48
147.3	1.48
147.8	1.48
148.0	1.48
148.3	1.48
148.3	1.48
148.9	1.48
149.8	1.48
150.62	1.48