

REVISIONS	DATE	BY
C-327		
C-586		
C-585		
C-524		
C-325		
C-324		
C-323		
C-739		
C-739A		
C-739B		
C-587		
C-739B		
C-938		
C-1008		
C-1183		

NOTE:  
BEFORE STARTING CONSTRUCTION CONTRACTOR MUST CHECK WITH UTILITIES FOR LOCATION OF EXISTING STRUCTURES WHETHER OR NOT INDICATED ON PLANS.

PLAN SCALE DISTORTED  
LOTS & ALLEYS 1" = 100'  
STREET WIDTHS 1" = 50'

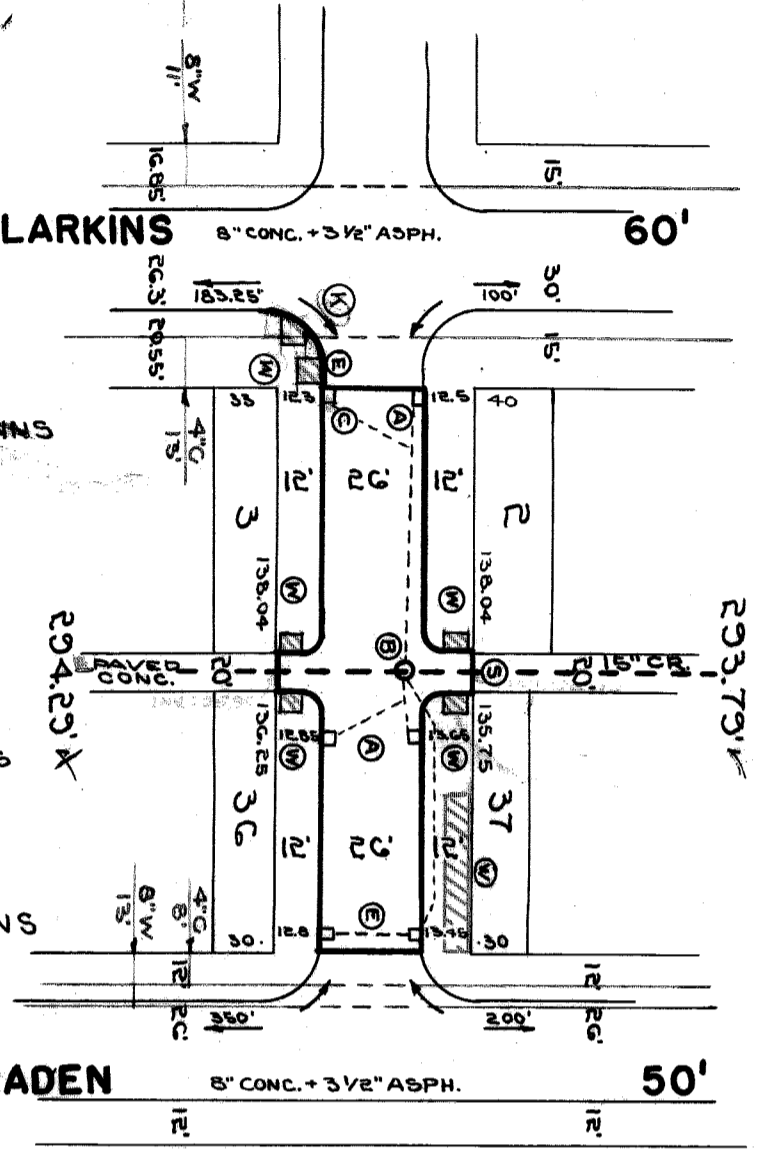
DRAINAGE COMPLETED 1-17-41  
PAVING COMPLETED C.C.-12-15-53

QUANTITIES	ESTIMATED		FINAL	
	LOTS	CITY	LOTS	CITY
EXCAVATION CU. YDS.	259	71		
NEW CURB II LIN. FT.	222	114		
PAVING BASINS SQ. YDS.	100	100		
6" CONC. DE. 5 FT. CURB REMOVAL LFT.	25	25		
SIDEWALK 4" 30 FT. ADJUST	14	14		
MANHOLES 30" ADJUST	15	15		
RE-CONSTRUCT ADJUST	3	3		
BASINS CONSTRUCT	1	1		
SEWER-12" LIN. FT.	10	10		

HOR. SCALE 1" = 100'	BOOK 1721	PAGE 50
VER. SCALE 1" = 2'	DATE DRAWING 7-15-52	
PLAN	JHW	COMPUTED G.B.
CHECKED J.K.	GRADE	CHECKED M.K.
LOT# 1	548.08	LENGTH 20
CITY 2	40	LENGTH 20
TOTAL 2	588.08	LENGTH 20
LOT#		CITY

DESIGNED BY J. WILBURN  
DRAWN BY J. WILBURN  
TRACED BY J. WILBURN  
CHECKED BY Erickson Benn  
APPROVED  
ENGINEER OF STREETS  
CITY ENGINEER

CONTRACT NO. P.W. 2233P  
DEPARTMENT OF PUBLIC WORKS DETROIT  
CITY ENGINEER'S OFFICE - DIVISION OF PAVING DESIGN  
STREET PAVING PLAN  
HORATIO  
E.P.L. LARKINS  
W.P.L. BRADEN  
INDEX TO NO. 5413  
NAME OF STREET FROM TO  
E.P.L. LARKINS W.P.L. BRADEN  
SHEET NO. 1 OF 1 SHEETS  
ASSIGN NO. 325-BR-10  
PETITION NO. 5822  
RECORD NO. 5413  
TYPE OF PAVEMENT 8" 6" 8" ONE COURSE CONCRETE - INTEGRAL CURB  
CONTRACT APPROVED, C.C. PET # 5822 ALEX ROSINSKI 5-26-53



**CATCH BASINS**

116.14  
116.48  
115.90  
116.31  
RET. 116.31

116.57 WK  
0+02 2-18" X 12" Y

117.84 WK  
0+20 17.52 WK

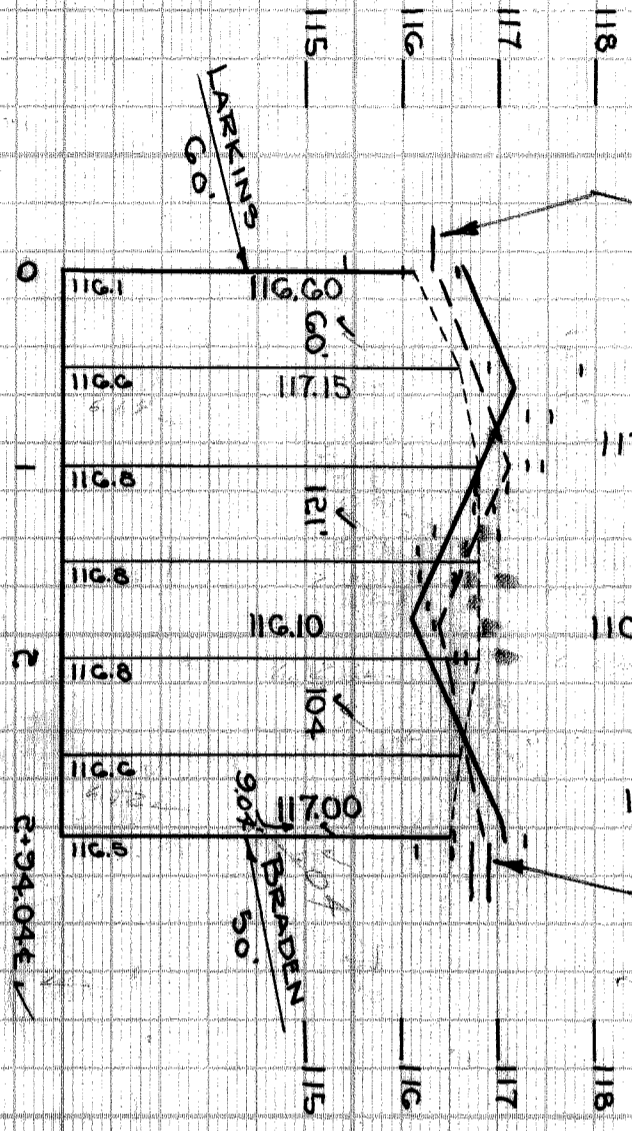
117.29 WK  
117.77 CAR  
116.76 CAR  
116.31 WK  
116.10 WK-ALLEY  
116.13 WK  
116.25 CAR  
117.38 CAR  
1+81 2-18" X 12" Y

116.54 WK  
0+00 16.67 WK

**CATCH BASINS**

116.53 WK  
0+34 17.27 WK

116.74  
116.27  
116.91  
117.21  
116.71  
CUT. CURB CUT.



NOTE:  
FOR SYMBOLS @ ETC, SEE STD. DRAWING C-327  
CONTROL MAINTAINED BY T'S IN WALKS 5' OFF P.L.  
AT (R) REBUILD 25' OF EXISTING CURB

**BENCH MARKS**

PLBM# 13-251 NE. COR. MICHIGAN & CHOPIN  
ARR. ON HYD. N.W. COR. LARKINS & HORATIO  
ARR. ON HYD. N.W. COR. HORATIO & BRADEN  
P.L.B.M.# 13-251A NE. COR. MICHIGAN & LARKINS

**ELEV.**

114.404  
120.16  
120.06  
113.805

PRELIMINARY FIELD INSPECTION MADE 6-26-53

94488