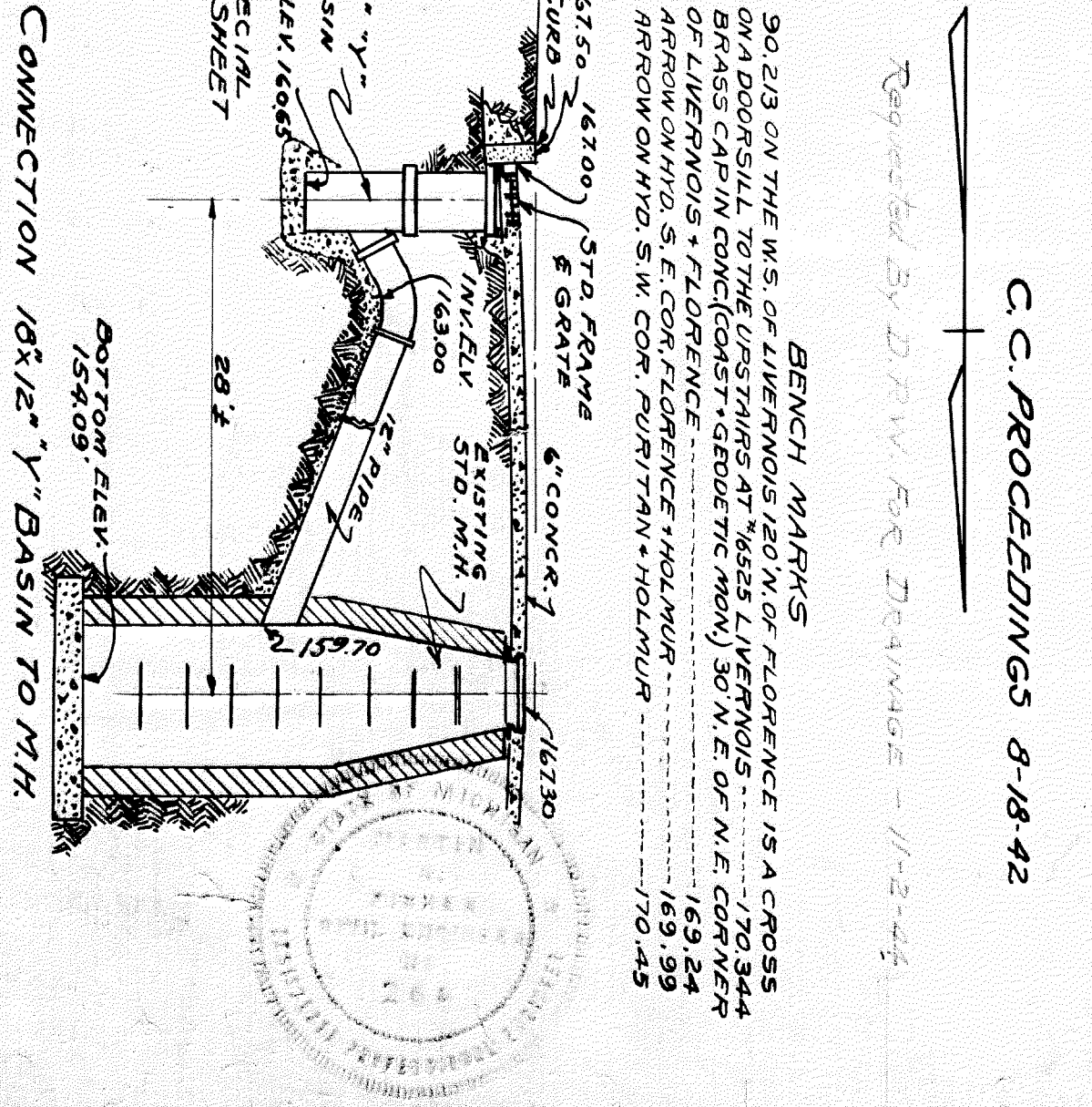
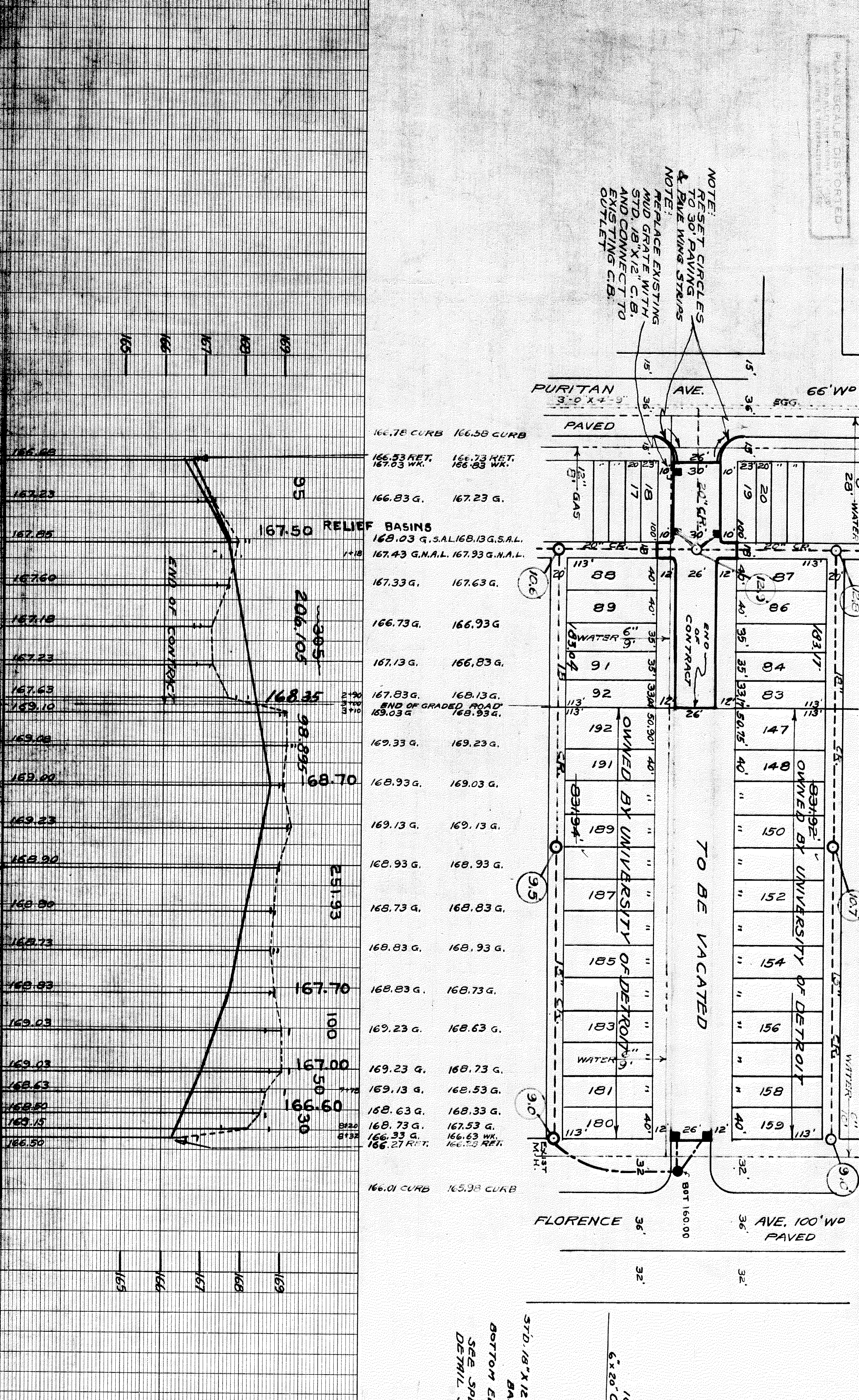


REVISIONS
 1
 2
 3
 4
 5

SEWER	OK	DATE	3-21-42
INDEXED			
REVISIONS			
JOB NO.		BLUE PRINT ISSUED FOR:	
		GRADE ONLY	
		CATCH BASINS	
		PAVING-CLASS.	
		DEPT. OF WATER SUPPLY	
		GAS CO.	
PROGRESS	START	FINISH	
QUANTITIES	EXCAVATION	STRAIGHT CURB NEW	
	OLD CURB RESET	CIRCULAR CURB	
	PAVING	CONCRETE BASE	
LOTS	CITY	LOTS	CITY
MON. SCALE 1" = 100'	BOOK 959	PAGE 38	
VER. SCALE 1" = 2'	DATE	3-24-42	
PLAN	F.M.	PROFILE	F.M.
CHECKED	GRADE	H.S.	CHECKED
COMPUTED	R.S.		
CITY	21	566.21	283.10
STATE	22	36.60	1800
TOTAL	23	602.81	301.10
LENGTH			
WIDTH			
CITY			
COST ADVERTISING BLANKS			
COST INSPECTION			
DESIGNED BY	F. P. Minkid		
DRAWN BY			
TRACED BY			
CHECKED BY	R. R. R.		
PROVED BY			
ENGINEER OF STREETS			
CITY ENGINEER			

NOTE: RESET CIRCLES TO 30" PAVING & BAY WING STAIRS

NOTE: REPLACE EXISTING MUD GRATE WITH STD. 18" X 12" C.B. AND CONNECT TO EXISTING C.B. OUTLET



DEPARTMENT OF PUBLIC WORKS DETROIT

CITY ENGINEERS OFFICE - DIVISION OF PAVING DESIGN

STREET PAVING PLAN

HOLMUR AVE.

N.P.L. OF PURITAN AVE.

S.P.L. OF FLORENCE AVE.

C.C. PROCEEDINGS 8-18-42

6" ONE COURSE CONCR.

WIDTH 26 & 30

INDEX NO. 60 25

RECORD NO.

NAME OF STREET: HOLMUR AVE.

FROM: N.P.L. OF PURITAN AVE.

TO: S.P.L. OF FLORENCE AVE.

TYPE OF PAVEMENT: 6" ONE COURSE CONCR.

WIDTH: 26 & 30

NUMBER OF SHEETS: 1

SHEET NO. 1

