

26 AP. 9/8/17

Total Quantities
1/2 - City of Detroit
1/2 - W.C.R.C.

| | | | |
|--------|-------|-------|-------|
| SMALL | C-300 | C-300 | C-300 |
| MEDIUM | C-300 | C-300 | C-300 |
| LARGE | C-300 | C-300 | C-300 |
| SMALL | C-300 | C-300 | C-300 |
| MEDIUM | C-300 | C-300 | C-300 |
| LARGE | C-300 | C-300 | C-300 |

NOTE:
BEFORE STARTING CONSTRUCTION CONTRACTOR SHALL CHECK WITH THE CITY FOR LOCATION OF EXISTING SEWER MAINS WHETHER OR NOT IN PLACE ON PLATS

PLAN SCALE DISTORTED
LOTS & ALLEYS 1"=100'
STREET WIDTHS 1"=50'

DRAINAGE COMPLETED
PAVING COMPLETED
C.C.-7-27-48

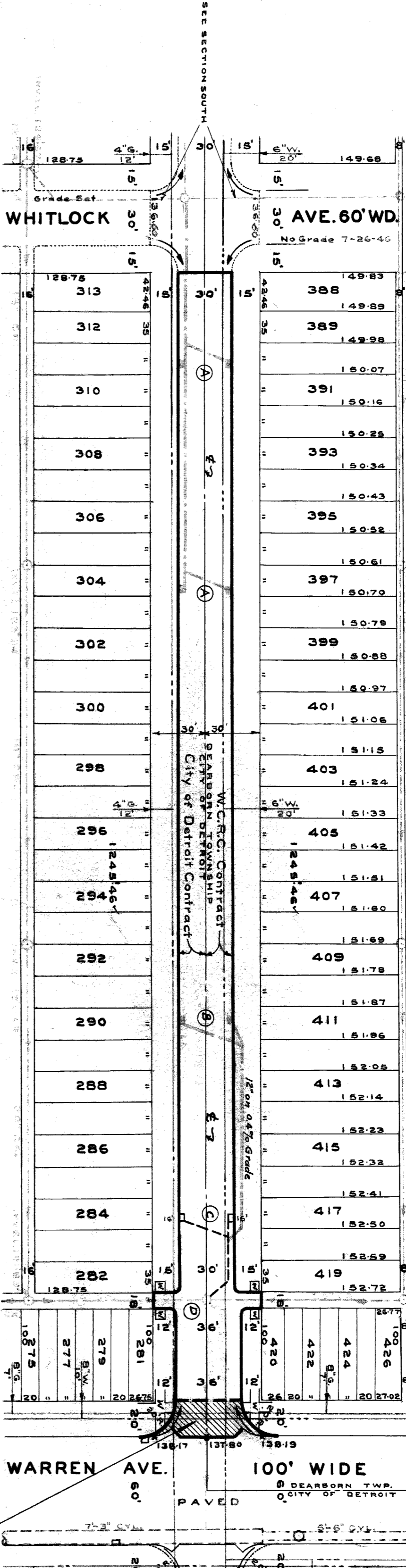
| ESTIMATED | FINAL |
|-----------|-------|
| 1705 | 94 |
| 4295 | 124 |
| 456 | 456 |
| 2 | 2 |
| 720 | 720 |
| 99 | 99 |

SEE SHEET #1

| | |
|----------|---------|
| 1633 | 34 |
| 6-13-46 | 7-26-46 |
| 5.5 | 5.5 |
| 2 454.92 | 76.00 |
| 2 530.92 | 265.46 |

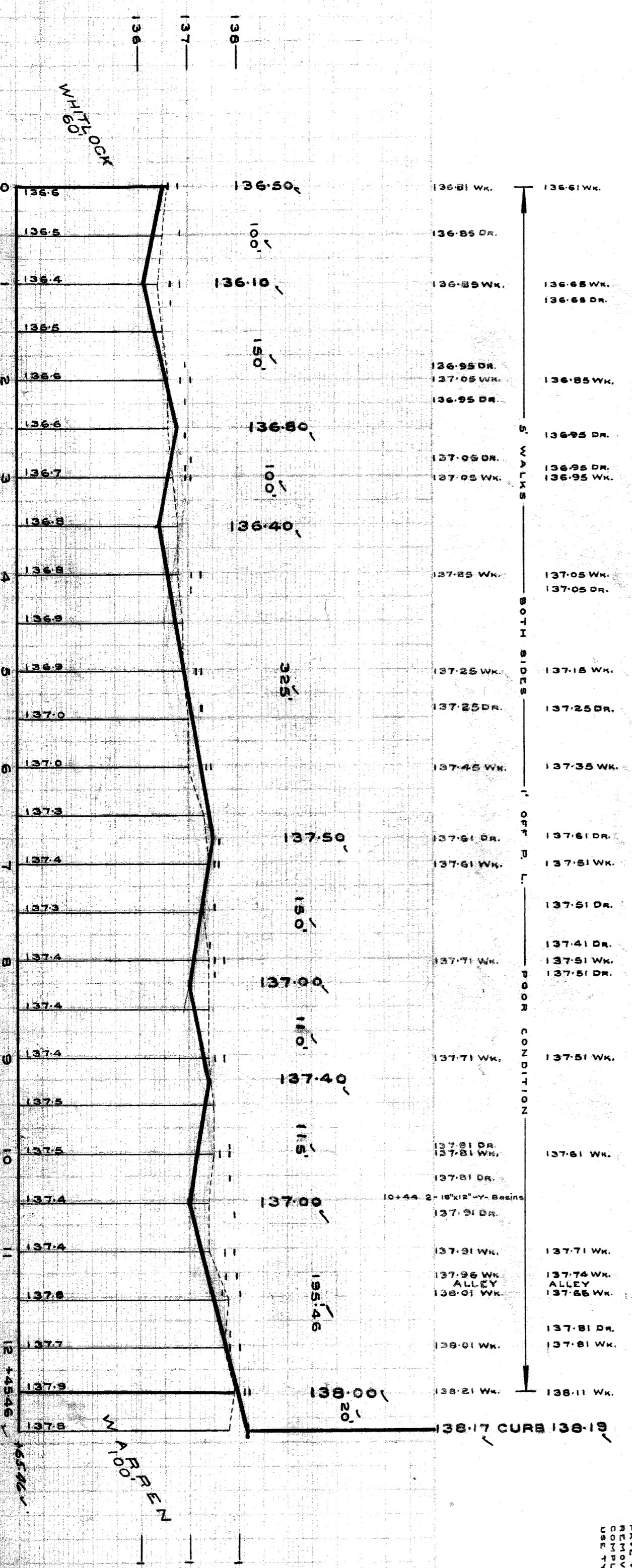
DESIGNED BY: SHOMAKI
DRAWN BY: L.G. VANTUYL
CHECKED BY: SENIOR R. REAM
ENGINEER OF STREETS
Assistant Engineer
Morton R. Traylor

DEPARTMENT of PUBLIC WORKS
CITY ENGINEERS OFFICE - DIVISION OF PAVING DESIGN
STREET PAVING PLAN
HEYDEN
N. P.L. of WHITLOCK AVE.
20 N. of S. P.L. of WARREN AVE.
30' & 36'
78 108
10-16-45



NOTE:
CONSTRUCT 4 STD. 18"x12" Y-BASINS COMPLETE AND CONNECT TO OUTLETS AS SHOWN
CONSTRUCT 2 MODIFIED 18"x12" Y-BASINS AND CONNECT AS SHOWN
ADJUST TOP OF 1 EXISTING MANHOLE.
CONTRACTOR SHALL FINISH AND INSTALL STD. FLAT TYPE CATCH BASIN FRAMES AND COVERS.
CONTRACTOR SHALL HAUL OLD CASTINGS TO DR. YARD AT STATE PARK JOHN R. UNDER NEW PAVEMENT.
CONSTRUCT 456 SQ. FT. OF STD. 4" WALK.
BACKFILL SEWER-PIPE TRENCH WITH APPROVED SAND & GRAVEL MATERIAL.

PAVE WARREN AVE. INTERSECTION 10" THICK. REMOVE PARTIAL RETURNS AND CONSTRUCT COMPLETE 36" RETURNS WITH 20" RADIUS. USE TYPE II SEPARATE CURBS.



94451