

OK *Shepard 1/5/51*

SEWERS ADDED 9-12-52 RD.
BASIN ADDED W.S. AT EIGHT MI.
10-17-52-AM

C-324A	C-390	C-567	C-733B	C-739B	C-1608
C-325A	C-524	C-733	C-738	C-739A	
C-326A	C-525	C-739	C-739A		
C-327	C-526	C-739A			

NOTE
BEFORE STARTING CONSTRUCTION CONTRACTOR
MUST CHECK WITH UTILITIES FOR LOCATIONS OF
EXISTING STRUCTURES WHETHER OR NOT INDI-
CATED ON PLANS.

PLAN SCALE DISTORTED
LOTS & ALLEYS 1/2"=100'
STREET WIDTHS 1/2"=50'
DRAINAGE COMPLETED 8-11-52
PAVING COMPLETED C.C. 11-7-52

QUANTITIES	ESTIMATED	FINAL
EXCAVATION		
NEW CURB		
PAVING		
MANHOLES		
CONSTRUCT		
ADJUST		
CONSTRUCT		
ADJUST		
CONSTRUCT		
ADJUST		

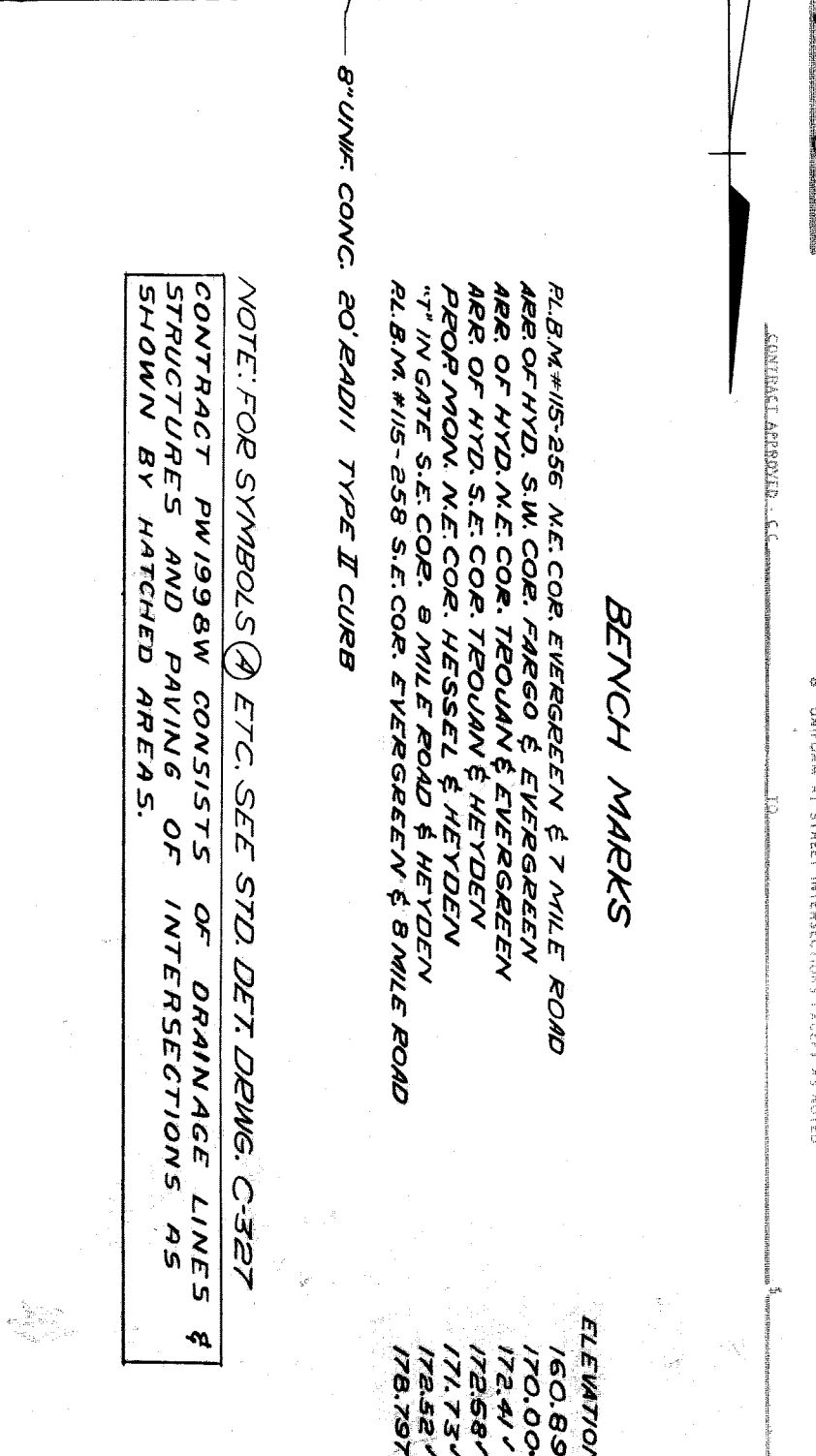
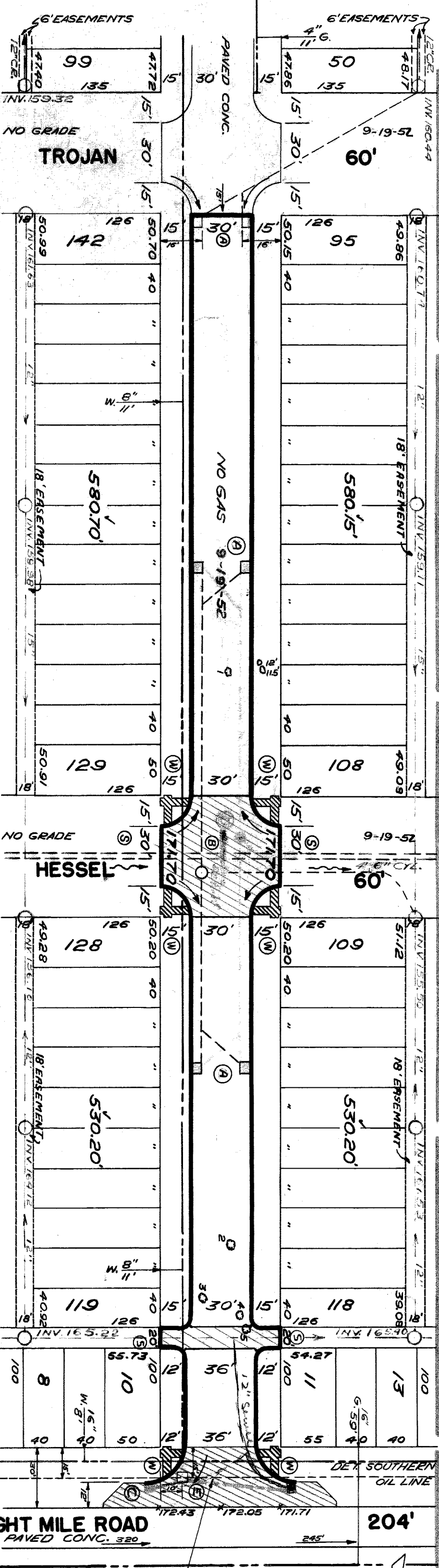
BOOK	786	PAGE	5
DATE	NOV 1951		
DATE DRAWING	10-11-51		
SCALE	1/2"=2'	DATE	10-11-51
PLAN	C.W.C.	PROFILE	C.W.C.
CHECKED	W.B.	GRADE	W.B.
CITY	218/25	LENGTH	5-5
TOTAL	2401	LENGTH	120063
DATE	1/20/51	LENGTH	11000
CITY	120063	LENGTH	120063

DESIGNED BY C.W. CMIER
DRAWN BY
CHECKED BY *Seaton Deum*
APPROVED BY *W. W. ...*
ENGINEER OF STREETS
CITY ENGINEER

CONTRACT APPROVED, C.C.
ONE COURSE CONCRETE, INTERNAL CURB
8" UNIFORM AT STREET INTERSECTIONS EXCEPT AS NOTED

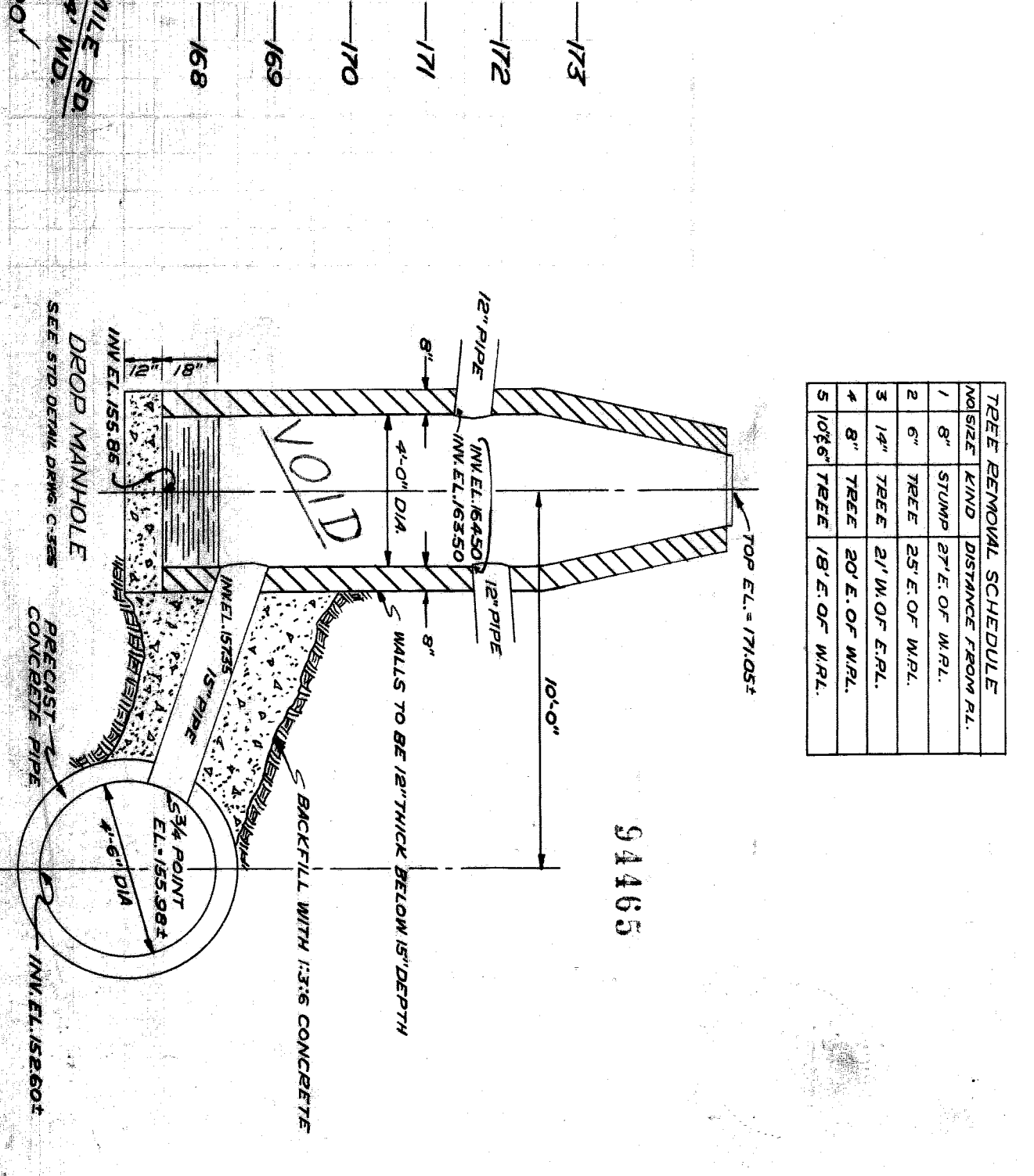
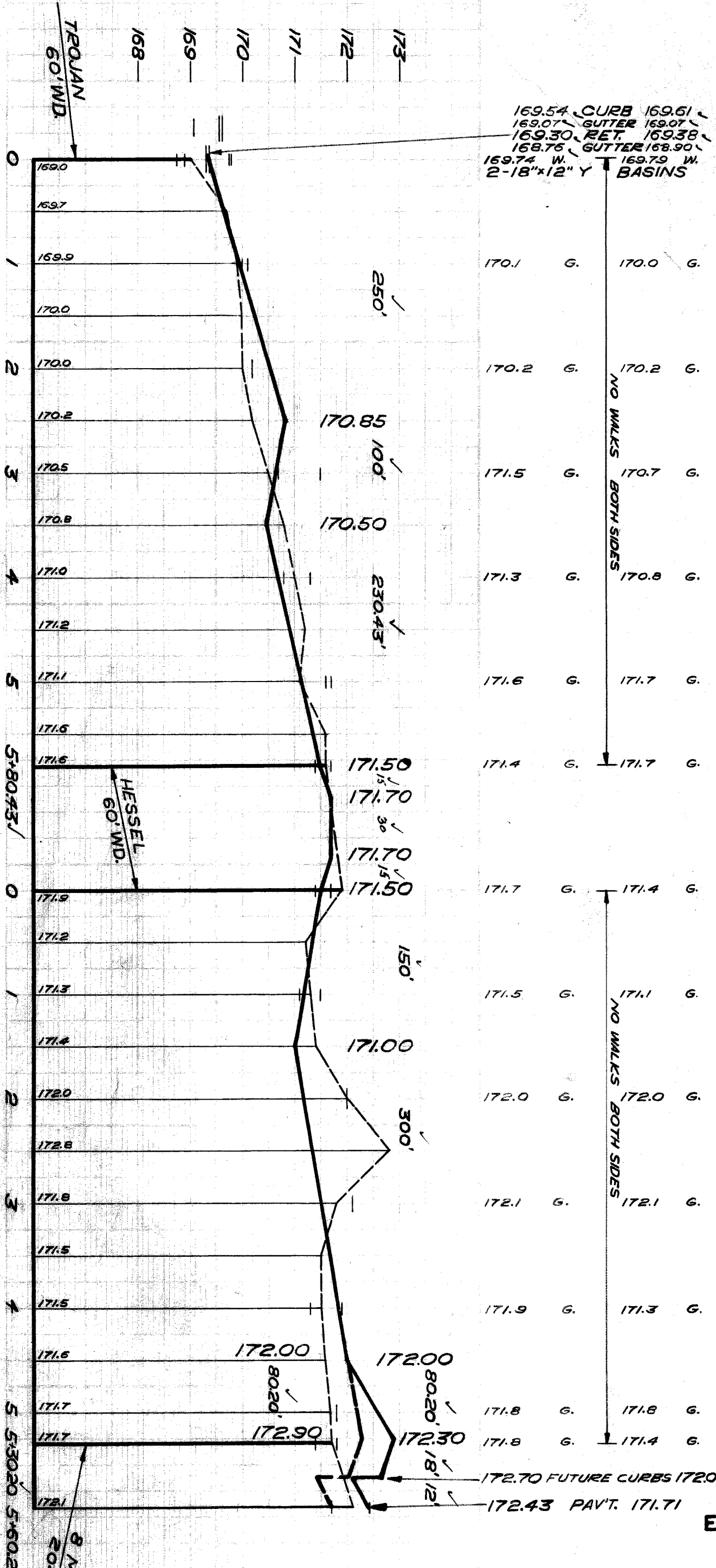
FROM N.P.L. OF TROJAN
TO 30' N. OF S.P.L. OF EIGHT MILE ROAD

RECORD NO. 72 115
INDEX FOLD NO. 52-19
SHEET 1 OF 1
MIDWAY 30' 8.36'



NOTE: FOR SYMBOLS (A) ETC. SEE STD. DET. DWG. C-327
CONTRACT PW1998W CONSISTS OF DRAINAGE LINES & STRUCTURES AND PAVING OF INTERSECTIONS AS SHOWN BY HATCHED AREAS.

TREE REMOVAL SCHEDULE
1 8" STUMP 27' E. OF W.R.L.
2 6" TREE 25' E. OF W.R.L.
3 14" TREE 21' W. OF E.P.L.
4 8" TREE 20' E. OF W.R.L.
5 10 1/2" TREE 18' E. OF W.R.L.



54465
SEE STD. DETAIL DWG. C-328
INVERT EL. 152.60'