

CITY ENGINEER'S OFFICE - DIVISION OF PAVING DESIGN
STREET PAVING PLAN

NAME OF STREET: **HEYDEN**

FROM: **N.P.L. SAWYER**

TO: **S.P.L. TIREMAN**

TYPE OF PAVEMENT: **DRAINAGE**

WIDTH: **30'**

NUMBER OF SHEETS	1
SHEET NO.	1

QUANTITIES	LOTS	CITY	LOTS	CITY
EXCAVATION	1 986	62		
STRAIGHT CURB NEW	2 399	44		
CIRCULAR CURB		25		
PAVING	4 025	115		
SIDEWALK SP. 1/2"	779	144		
SEWER 12" CR.	1	22		
M.H.'S - CONSTR.	1	1		
C.B.'S - CONSTR.	5	1		

PLAN	PROF. GRADE	COMPUTED	GRADE
CHECKED 65	GRADE 65	CHECKED 65	GRADE 65

LOT 1	2 415	221	1207
CITY 1	54 00	17 00	17 00
TOTAL 1	2 449	221	1 224

DESIGNED BY	G.S. Toussaint
DRAWN BY	G.B. Kraft
TRACED BY	
CHECKED BY	<i>[Signature]</i>
APPROVED	<i>[Signature]</i>

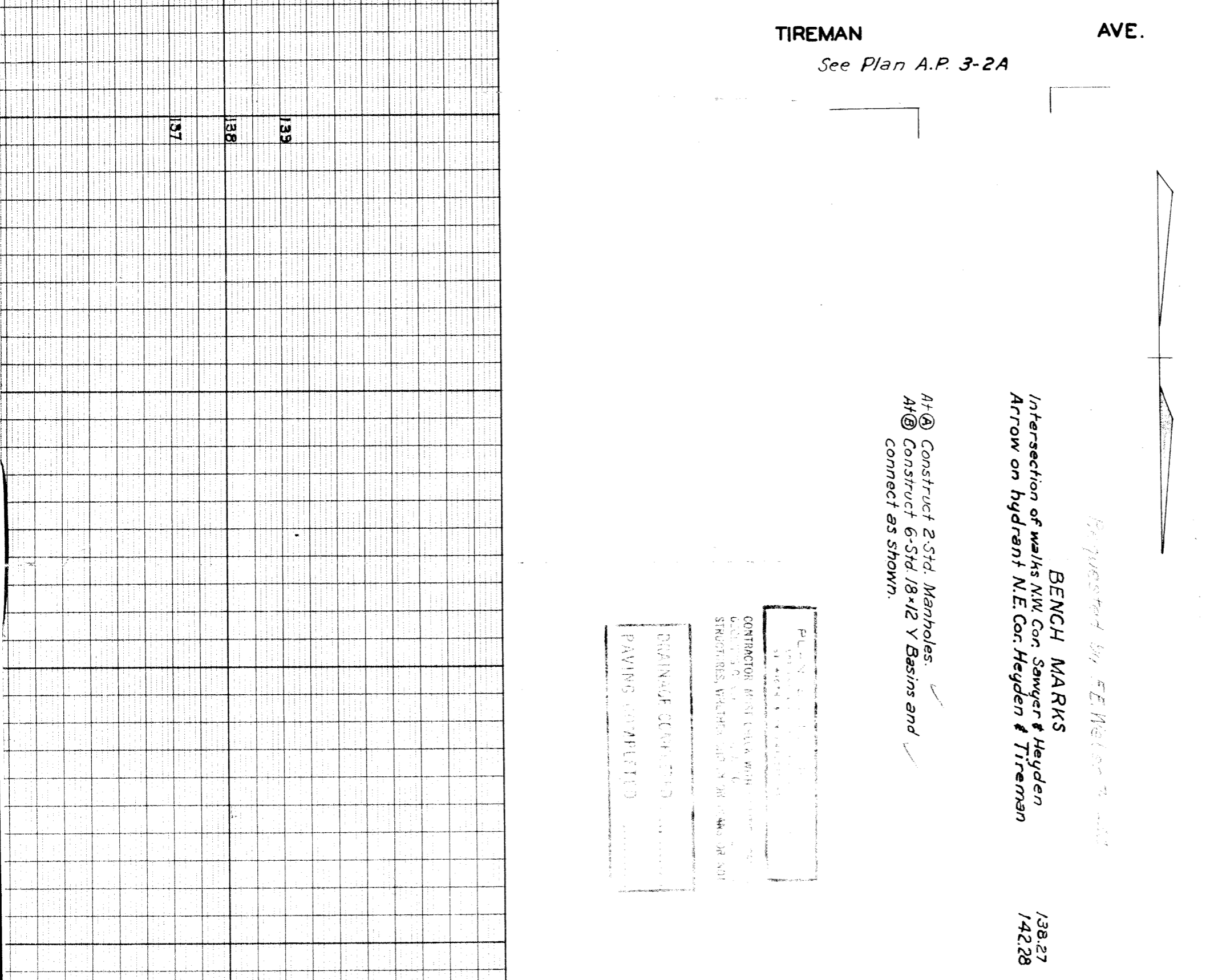
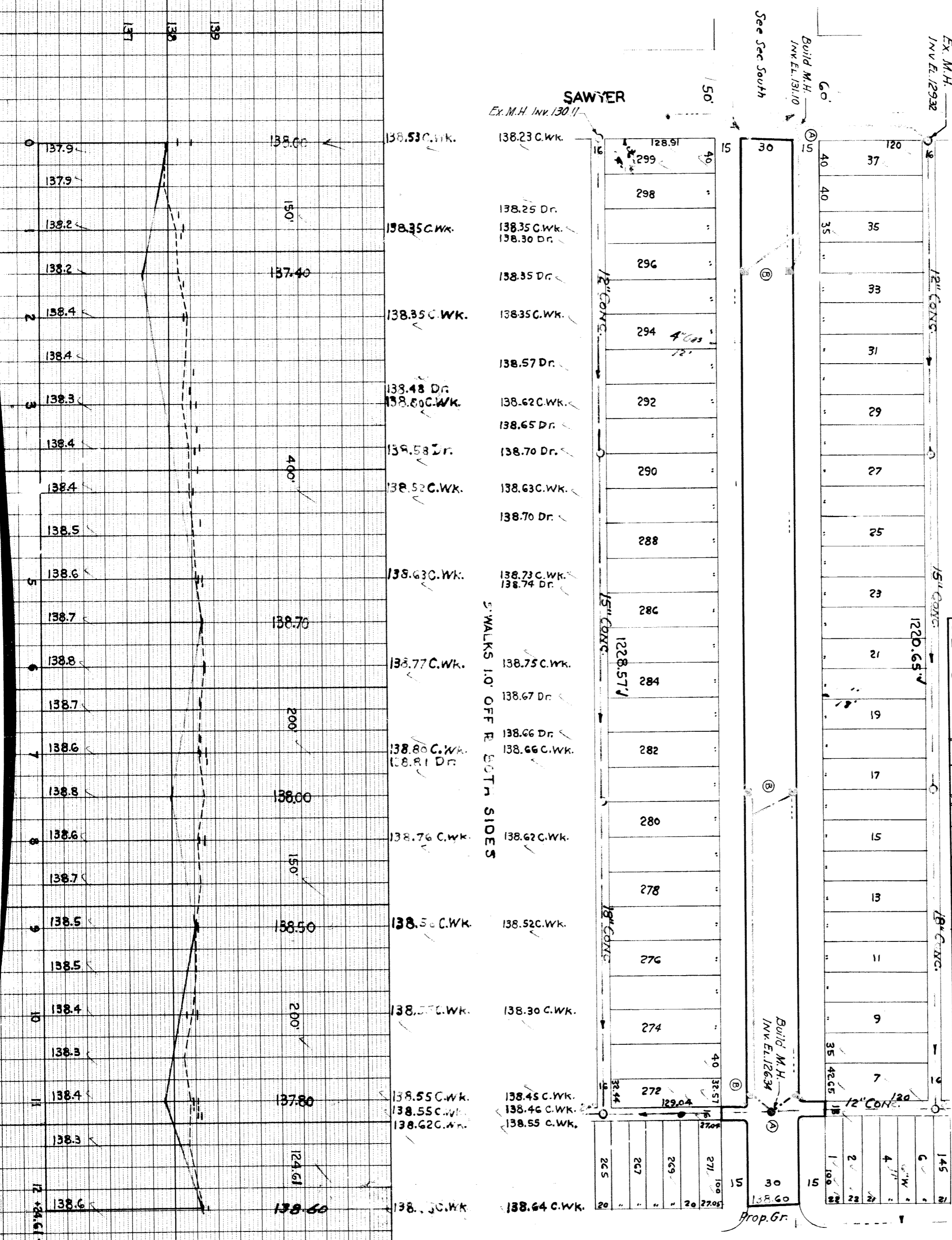
ASSIST. CITY ENGINEER

CARD NO.	
INDEX TOPO NO.	78
RECORD NO.	109

Requested by: **BENCH MARKS**
 Intersection of walks NW Cor. Sawyer & Heyden
 Arrow on hydrant N.E. Cor. Heyden & Tireman

At (A) Construct 2 Std. Manholes.
 At (B) Construct 6-Std. 18"x12" Basins and Connect as shown.

CONTRACTOR MUST VERIFY WITH LOCAL AGENCIES AND UTILITIES THE LOCATION AND DEPTH OF ALL EXISTING UTILITIES, WHETHER SHOWN ON THIS PLAN OR NOT. PAVING COMPUTED.



SAWYER

Ex. M.H. Inv. 130.11

See Sec South

Build M.H. Inv. El. 131.10

Ex. M.H. Inv. El. 129.32

Co.

UN

UN

UN

UN

UN

UN

UN

UN

UN

UN

UN

UN

UN

UN

UN

Build M.H. Inv. El. 126.34

Prop. Gr.

TIREMAN AVE.

See Plan A.P. 3-2A

138.27
142.28