

LYNDON AVE. 86'

SEWER	10-10-75
REVISIONS	
SUPPLEMENTARY DETAILS	
DRAWING NO.	

NOTE: BEFORE STARTING CONSTRUCTION CONTRACTOR MUST CHECK WITH UTILITIES FOR LOCATIONS OF EXISTING STRUCTURES WHETHER OR NOT INDICATED ON PLANS.

PLAN SCALE DISTORTED
LOTS & ALLEYS 1"=100'
STREET WIDTHS 1"=50'

DRAINAGE COMPLETED

PAVING COMPLETED

QUANTITIES		ESTIMATED		FINAL	
EXCAVATION	CU. YDS.	LOTS	CITY	LOTS	CITY
NEW CURB	2,854	189	189		
PAVING	4,218	438	438		
SIDEWALK	288	288	288		
MANHOLES	2	2	2		
BASINS	9	9	9		
SEWERS 12" LIN. FT.	880	880	880		
SEWERS 15" LIN. FT.	95	95	95		

HOR. SCALE	1"=100'	BOOK	1556	PAGE	69
VER. SCALE	1"=2'	DATE	4-14-45		
PLAN	F.J.G.	PROFILE	F.J.G.	COMPUTED	L.G.V.
CHECKED	S.S.	GRADE	R	CHECKED	S.S.
LOT 2L	2,886.20	LENGTH	1,443.10		
CITY 2L	176.00	LENGTH	88.00		
TOTAL 2L	3,062.20	LENGTH	1,531.10		

DESIGNED BY	R ³
DRAWN BY	F.J. Gmeiner
TRACED BY	
CHECKED BY	S.S.
APPROVED	
ENGINEER OF STREETS	
ASSIST. CITY ENGINEER	

CARD NO.	
INDEX	76
TOTAL	112
RECORD NO.	

DEPARTMENT OF PUBLIC WORKS DETROIT

CITY ENGINEER'S OFFICE - DIVISION OF PAVING DESIGN

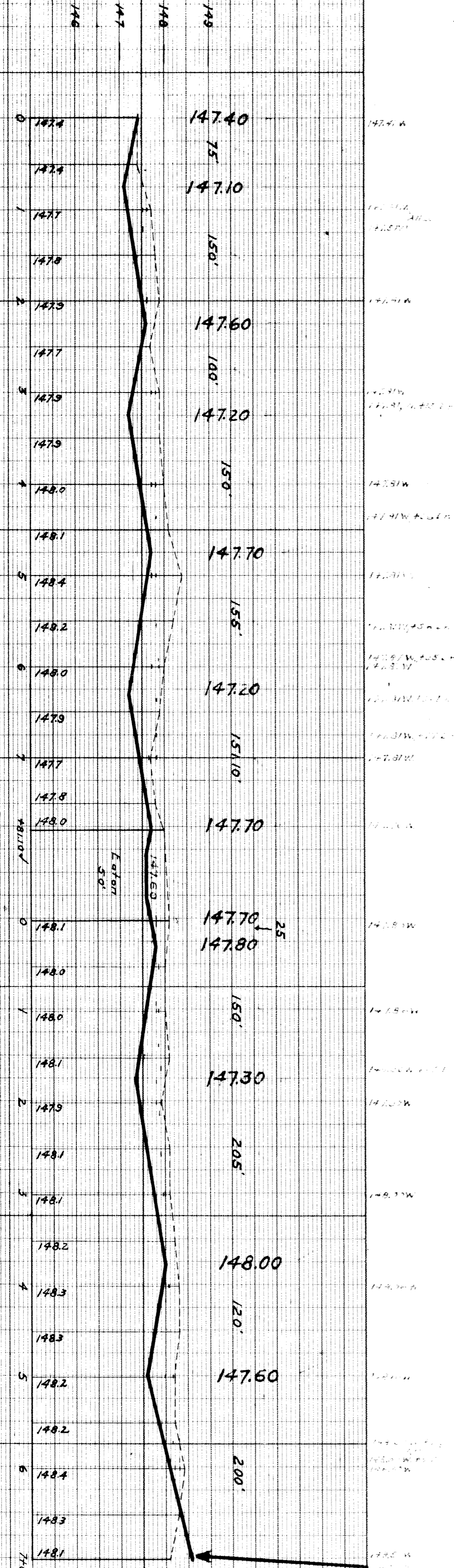
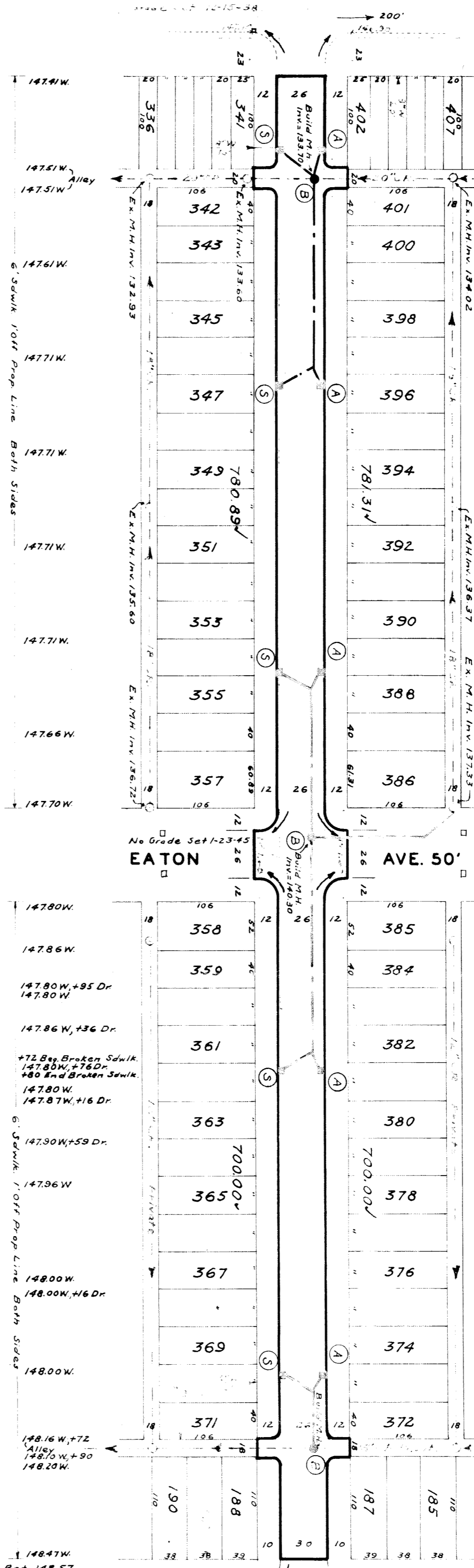
STREET PAVING PLAN AP 61-87A

HEYDEN

NAME OF STREET
N.P.L. OF LYNDON

FROM
S.P.L. OF OUTER DRIVE

TYPE OF PAVEMENT
26 & 30



Notes:

(A) Construct 5' x 18" x 12" - Y. Basins complete and connect to existing outfalls as shown.

(S) Construct 5' x 18" x 12" - Y. Basins complete and connect to existing outfalls as shown.

(B) Construct 3' x 4' Manholes complete.

Photographer shall furnish and install standard type catch basin frames and grates.

Bench Marks
P.L. B. 112.255 Handhole at NE corner Lyndon and Evergreen Elev 147.077
Spike in Dat. Edison Pole N. side Alley (N. of Lyndon) 23' W. of Heyden (148.47)
Spike in Utility Pole at SW corner of Lyndon and Heyden Elev 148.47
Arrow on Hyd. E. side of Heyden 20' E. South of House #14887 Elev 151.03
Arrow on Hyd. N.E. corner of Outer Drive and Heyden Elev 151.81