

25-B  
4-25-50

SEWER	OLD MAP	11-15-39
REVISIONS		
SUPPLEMENTARY DETAILS		
C-324A	C-587	C-739B
C-325	C-524	C-733
C-326A	C-585	C-739
C-327	C-586	C-739A

NOTE:  
BEFORE STARTING CONSTRUCTION CONTRACTOR MUST CHECK WITH UTILITIES FOR LOCATIONS OF EXISTING STRUCTURES WHETHER OR NOT INDICATED ON PLANS.

PLAN SCALE DISTORTED  
LOTS & ALLEYS 1"=100'  
STREET WIDTHS 1"=50'

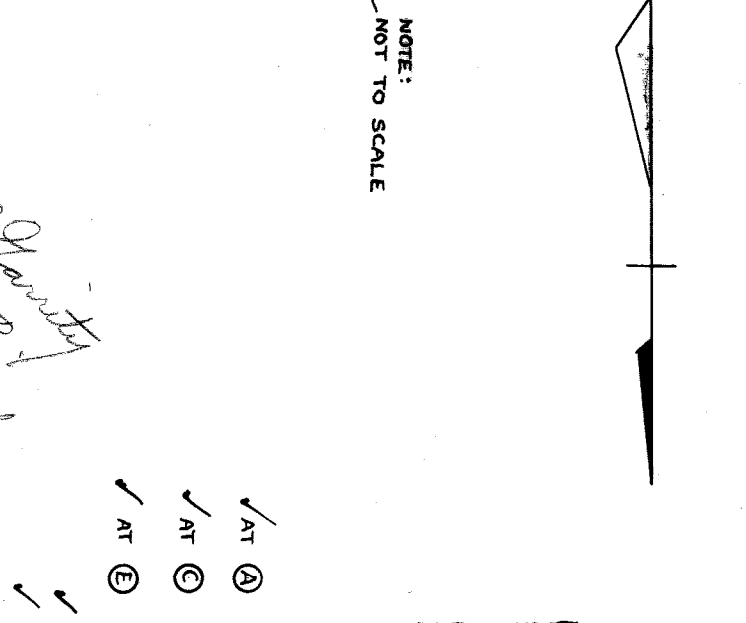
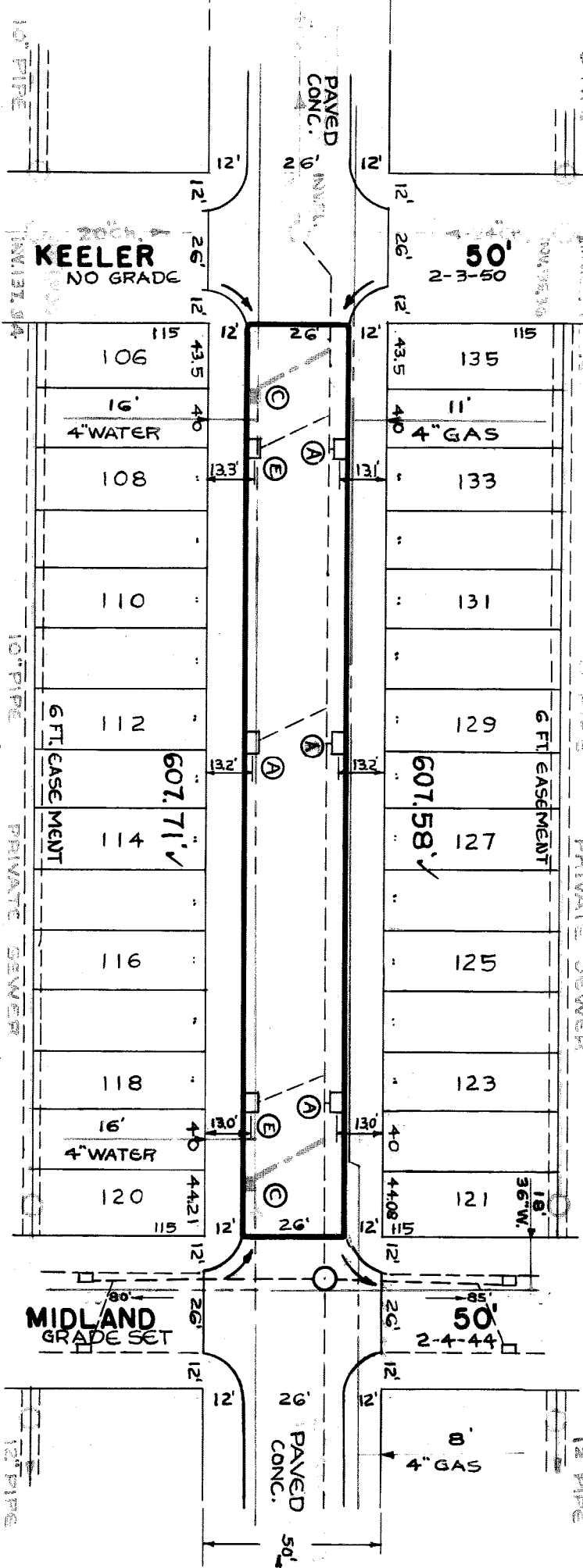
DRAINAGE COMPLETED 6-21-40  
PAVING COMPLETED 8-15-50

QUANTITIES		ESTIMATED		FINAL	
EXCAVATION	CU. YDS.	LOTS	CITY	LOTS	CITY
NEW CURB	LN. FT.	543			
PAVING	SQ. YDS.	1823			
G. CONC. DR.	S. FT.	100		100	
SIDEWALK	SQ. FT.	100		100	
MANHOLES	ADJUST	1W		1W	
CONSTRUCT		4		4	
ADJUST		2		2	
SEWER 12"	LN. FT.	60		60	

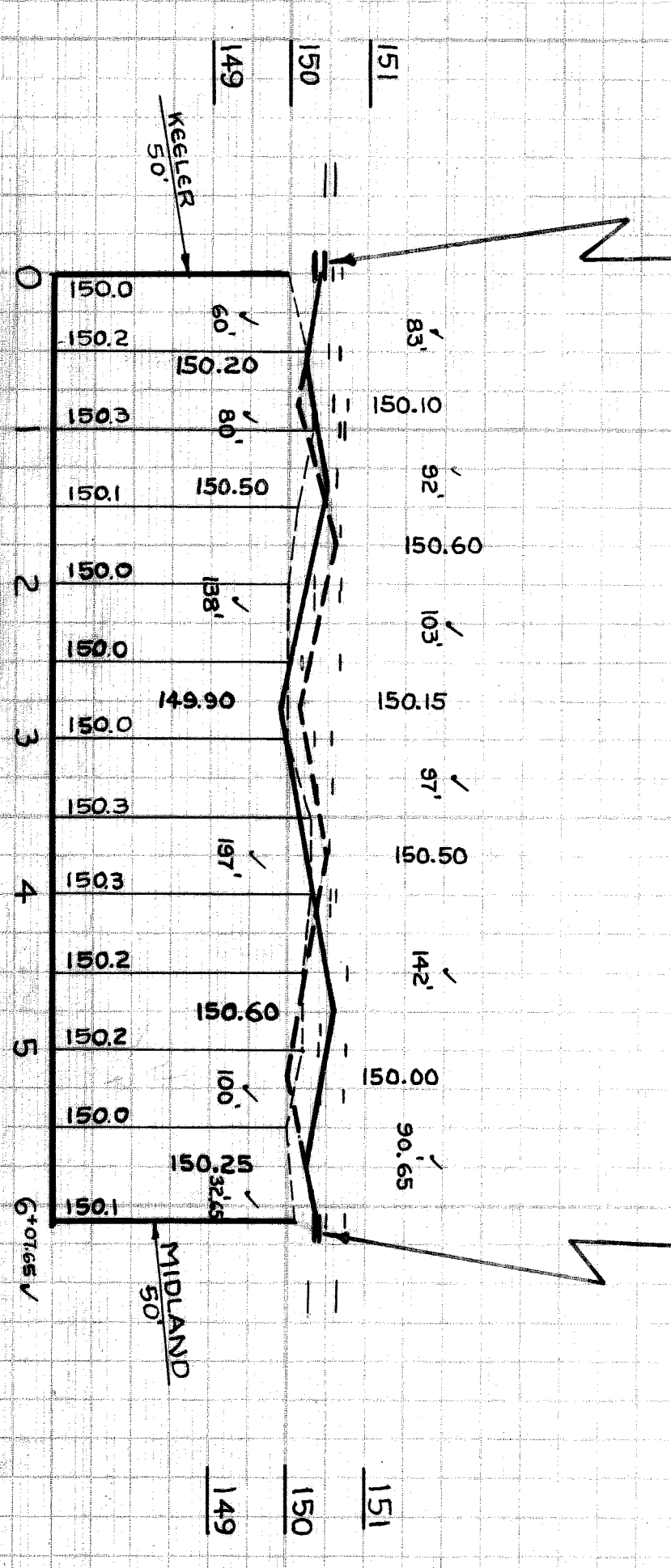
NO. SCALE	1"=100'	BOOK	1240	PAGE	50
VER. SCALE	1"=2'	DATE DRAWING	12-20-49	LEVELS	2-7-50
PLANK	S.B.	PROFILE	S.B.	COMPUTED	5.5.
CHECKED	LFK	GRADE	3FD	CHECKED	DF
LOT#	1 215 29	LENGTH		607 65	
CITY	1 215 29	LENGTH			
TOTAL	1 215 29	LENGTH		607 65	
CITY		LENGTH			

DESIGNED BY: S.F. DAVIS R3  
DRAWN BY: STANLEY BULNER  
CHECKED BY: [Signature]  
APPROVED BY: [Signature]  
ENGINEER OF STREETS  
MARTIN R. FINE  
ASSIST. CITY ENGINEER

CONTRACT NO. PW. 1155-F  
DEPARTMENT OF PUBLIC WORKS DETROIT  
CITY ENGINEER'S OFFICE ... DIVISION OF PAVING DESIGN  
STREET PAVING PLAN  
NAME OF: HEYDEN  
FROM: N.P.L. KEELER  
TO: S.P.L. MIDLAND  
ASSIGN NO. 325AE3  
PETITION NO. 7914  
SHEET 1 OF 1 SHEETS  
WIDTH 26'



150.02 GUTTER	150.08
150.46 CURB	150.58
149.84 GUTTER	149.85
150.31 RETURN	150.44
150.53 W.	150.66 W.
150.64 DR. 0+50	150.50 DR. 0+50
18x12" C.B. 0+83	18x12" C.B. 0+83
150.74 DR. 0+89	150.58 DR. 0+89
150.70 W.	150.63 W.
150.31 W.	150.60 DR. 1+32
150.31 DR. 2+10	150.64 DR. 1+66
5 FT CONC. WALK OFF P.L.	150.66 W.
150.17 DR. 2+50	150.66 DR. 2+50
18x12" C.B. 2+78	18x12" C.B. 2+78
150.32 W.	150.52 W.
150.37 DR. 3+29	150.56 DR. 3+29
150.52 DR. 3+69	150.54 W.
150.61 W.	150.54 DR. 4+07
150.76 DR. 4+50	150.41 W. 4+86
150.76 W.	150.40 W.
18x12" C.B. 5+17	18x12" C.B. 5+17
150.71 DR. 5+30	150.42 DR. 5+30
150.74 W.	150.50 W.
150.39 RETURN	150.40
149.96 GUTTER	149.94
150.63 CURB	150.29
150.15 GUTTER	149.82



*Letter from A.V. Raverty  
Apr. 26th 1950  
Request for contract to be held  
up until street water main  
is replaced with 8" pipes  
16" w.p. 500  
If W. to that basin  
they will get this  
done in about 10 days*

NOTE: P.L. OFFSET 5 FT. TO + IN WALK.

NOTES

- AT (A) ADJUST TOPS OF EXISTING CATCH BASINS USING FLAT TYPE FRAMES & GRATES. SEE NOTE PERTAINING TO CASTINGS.
- AT (B) CONSTRUCT 2 STD PIPE CATCH BASINS WITH STD FRAMES & GRATES AS REQUIRED.
- AT (C) CONNECT TO EXISTING OUTLETS AS SHOWN. SEE STD. DRAWS. C-326A & E-524.
- AT (D) ABANDON 2 EXISTING PIPE BASINS. PLUG OUTLETS WITH CLASS "C" CONCRETE & REMOVE OR FILL BASINS WITH CLASS "C" CONCRETE.
- ADJUST TOP OF 1 WATER MANHOLE.
- BACKFILL SEWER PIPE TRENCHES UNDER PROPOSED PAVEMENT WITH APPROVED SAND-GRAVEL MATERIAL.
- CONTRACTOR SHALL FURNISH NEW CASTINGS FOR ALL ADJUSTED BASINS & MANHOLES EXCEPT WHEN SALVAGED CASTINGS ARE AVAILABLE & THEIR USE SHALL BE MADE BY THE ENGINEER. A DEDUCTION OF \$15.00 FOR EACH TOP SO USED SHALL BE MADE FROM THE ORIGINAL CONTRACT PRICE OTHERWISE THE SALVAGED CASTINGS MUST BE HAULED TO DR.W. YARDS AT STATE PARK & JOHN R. STS.

94463