

SEWER	REVISED	DATE
C-327	C-586	C-739A
C-326A	C-585	C-739
C-325	C-524	C-733
C-324A	C-390	C-587
C-1783		

NOTE:
 BEFORE STARTING CONSTRUCTION CONTRACTOR
 MUST CHECK WITH UTILITIES FOR LOCATIONS OF
 EXISTING STRUCTURES WHETHER OR NOT INDI-
 CATED ON PLANS.

PLAN SCALE DISTORTED
 LOTS & ALLEYS 1" = 100'
 STREET WIDTHS 1" = 50'

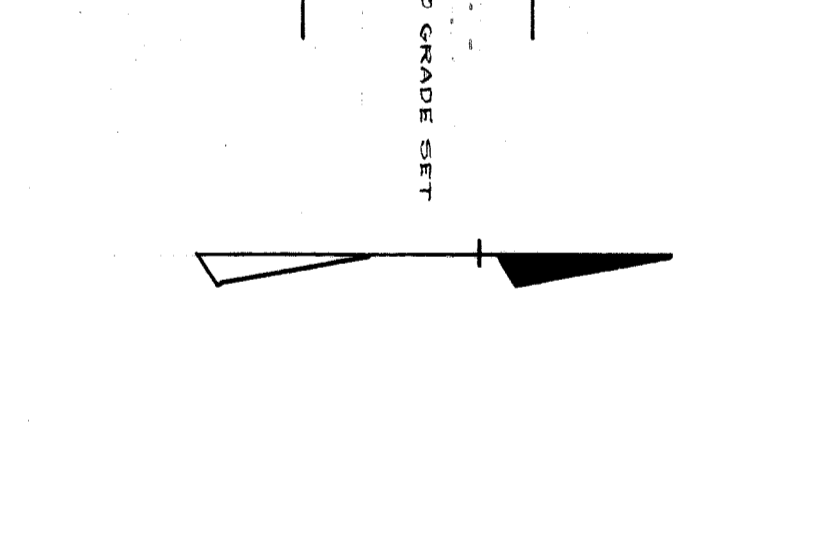
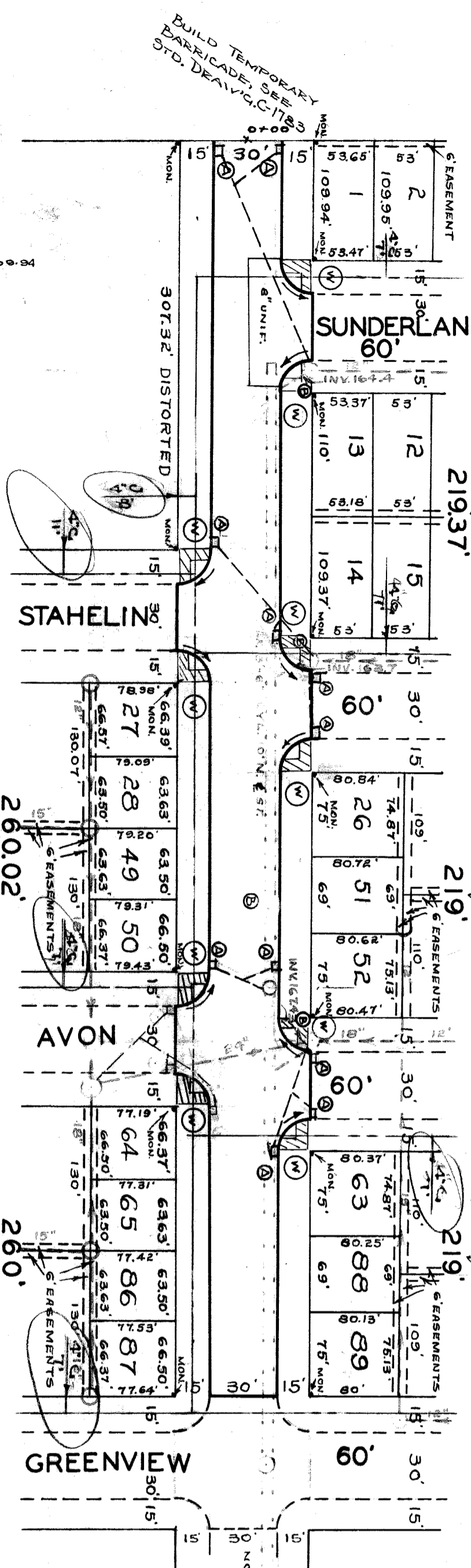
By D.P.W.
 DRAINAGE COMPLETED 9-1-55
 PAVING COMPLETED C.C. 7-24-56

QUANTITIES	ESTIMATED	FINAL
EXCAVATION CU. YDS.	135	58
NEW CURB LIN. FT.	2740	56
PAVING 8" SQ. YDS.	871	11
8" WALK 5" SQ. FT.	1740	48
MANHOLES ADJUST	1	1
7.5" COVERS	11	11
BASINS	10	10

NO. SCALE 1" = 100'	BOOK 1841	PAGE 19
DATE 4-26-55	DATE DRAWING 5-9-55	
CHECKED J.M. W/M	PROF. M.G.B. U.E.	COMPUTED A.B. W.K.
CITY TOTAL 189465	LENGTH 30000	WIDTH 15000
	LENGTH 19733	WIDTH 34133

DESIGNED BY Erickson
 DRAWN BY M. Boney
 TRACED BY BEHM
 CHECKED BY BEHM
 APPROVED BY [Signature]
 ENGINEER OF STREETS
 CIVIL ENGINEER

CONTRACT NO. PW 2700 P
 DEPARTMENT OF PUBLIC WORKS DETROIT
 CITY ENGINEERS OFFICE - DIVISION OF PAVING DESIGN
 STREET PAVING PLAN
 HESSEL
 FROM 109.94' W. OF W.P.L. OF SUNDERLAND
 TO W. OF W.P.L. GREENVIEW
 SHEET 1 OF 1 SHEETS
 ASION NO. 325-08-20
 PETITION NO.



CONTRACT APPROVED 6-6-55
 PART 4131 NAMEY DACHILLE 3/8/55
 SUB. MON. N.W. COR. GREENVIEW & HESSEL
 SUB. MON. N.W. COR. HESSEL & AVON
 SUB. MON. N.W. COR. HESSEL & STAHELIN

NOTES
 FOR SYMBOLS @ ETC. SEE STD. DET. DRAWG. C-327
 HORIZONTAL CONTROL BY EXISTING MON.
 CAS LINES SHOWN ARE PROPOSED LINES
 AS SHOWN ON 5-13-55; SEE PROPOSED LINES

DEAINAGE BY D.P.W. CONTRACTOR TO ADJUST AS NECESSARY

BENCH MARKS
 ELEV. 181.780
 179.250
 180.45

