

SEWER <i>RT. J.</i>		JOB NO. <b>C-4056</b>	PROGRESS
INDEXED <b>11-15-39.</b>	DATE	BLUE PRINT ISSUED FOR:	START FINISH
REVISIONS:	GRADE ONLY	CATCH BASINS	EXCAVATION
	PAVING-CLASS	CONCRETE BASE	STRAIGHT CURB NEW
	DEPT. OF WATER SUPPLY		OLD CURB RESET
	GAS CO.		CIRCULAR CURB
			PAVING
			QUANTITIES
			LOTS
			CITY
			LOTS
			CITY
			HOR. SCALE
			VER. SCALE
			DATE <b>11-15-39</b>
			BOOK <b>1352</b> PAGE <b>38</b>
			DESIGNED BY <i>[Signature]</i>
			DRAWN BY <b>R.W. STEVENSON</b>
			TRACED BY
			CHECKED BY <i>[Signature]</i>
			APPROVED <i>[Signature]</i>
			ENGINEER OF STREETS
			ASST. CITY ENGINEER
			CITY

DEPARTMENT OF PUBLIC WORKS DETROIT  
 CITY ENGINEER'S OFFICE - DIVISION OF PAVING DESIGN  
**STREET PAVING PLAN**

NAME OF **HENDRIE**  
 STREET **EL-FIELD**  
 FROM **W.L. TOWNSEND**  
 TO **W.L. TOWNSEND**

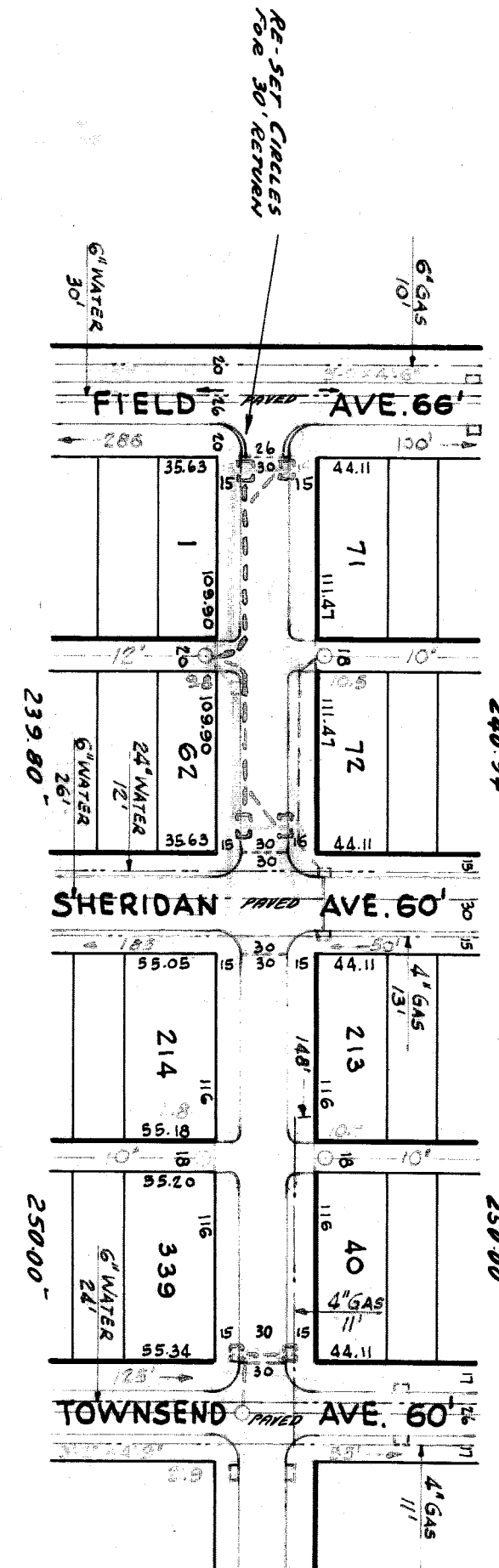
CLASS **A-6 ONE Q. CURB** WIDTH **30'**

TYPE OF PAVEMENT **STRIPS-KK**

CARD NO.  EXISTING POOLS AND BASINS  
 NEW " " "

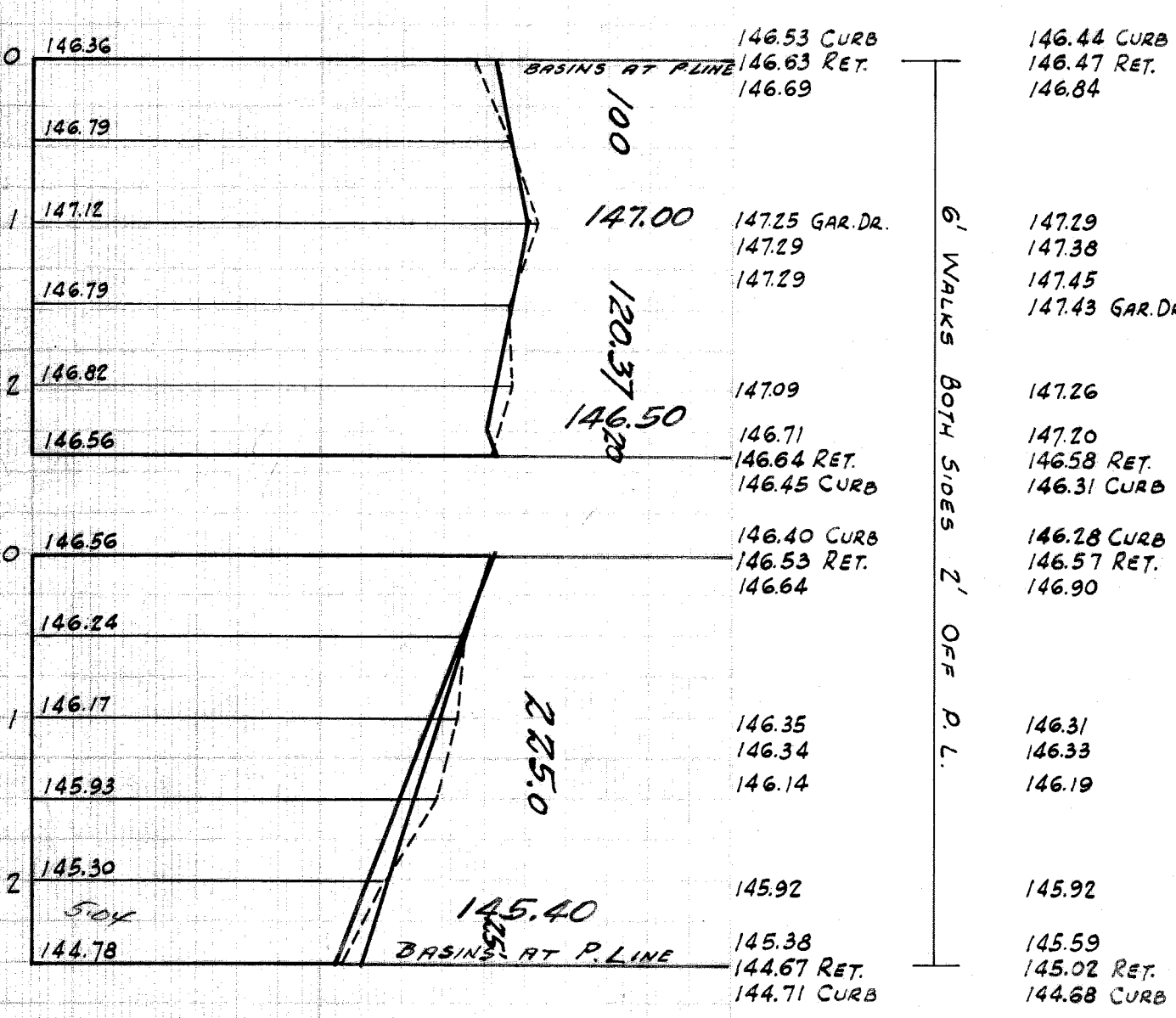
INDEX TOPO. NO. **24 49**  
 RECORD NO.

NUMBER OF SHEETS **1**  
 SHEET NO. **1**



**BENCH MARKS**

B.M. #48302 S. SIDE OF E. GAD. BLVD. 70' E. OF BELLEVUE, 'X' ON DOOR STEP — EL. 149.640  
 A40-HYD. S. SIDE OF HENDRIE OPP. FIELD — 149.62  
 A40-HYD. S.W. COR. SHERIDAN AND HENDRIE — 149.72  
 'X' IN WALK S. SIDE OF HENDRIE 20' E. OF ALLEY E. OF SHERIDAN — 146.15  
 B.M. #49204 'X' ON WATER TABLE NE. COR. VAN DYKE AND HENDRIE — 145.432



147  
146  
145  
144

BASE LINES  
 INSTALLED MARCH 7-1940 - M.

DRAINAGE COMPLETED.....  
 PAVING COMPLETED.....

CONTRACTOR MUST CHECK WITH UTILITIES BEFORE BEGINNING CONSTRUCTION, ON LOCATION OF EXISTING STRUCTURES, WHETHER SHOWN ON PLANS OR NOT.

94422