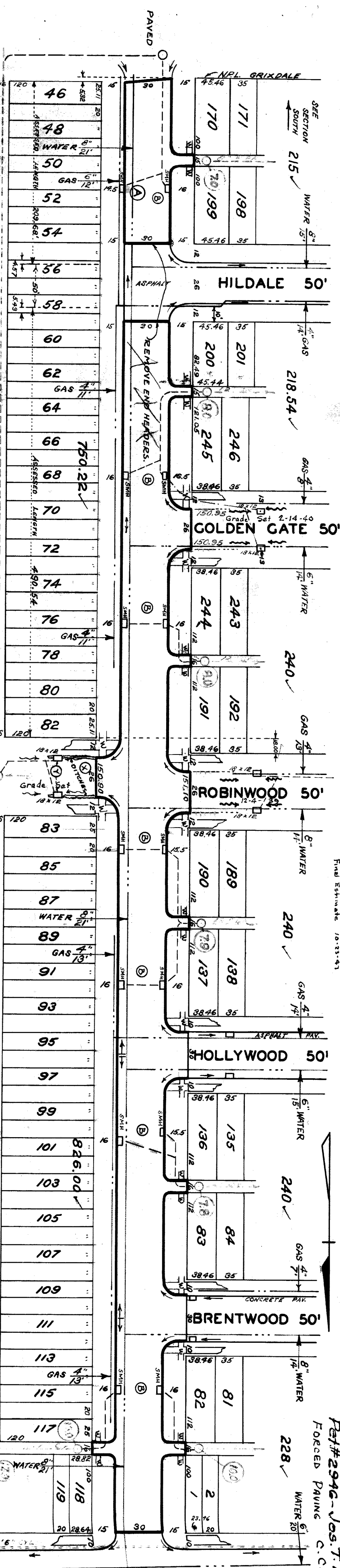


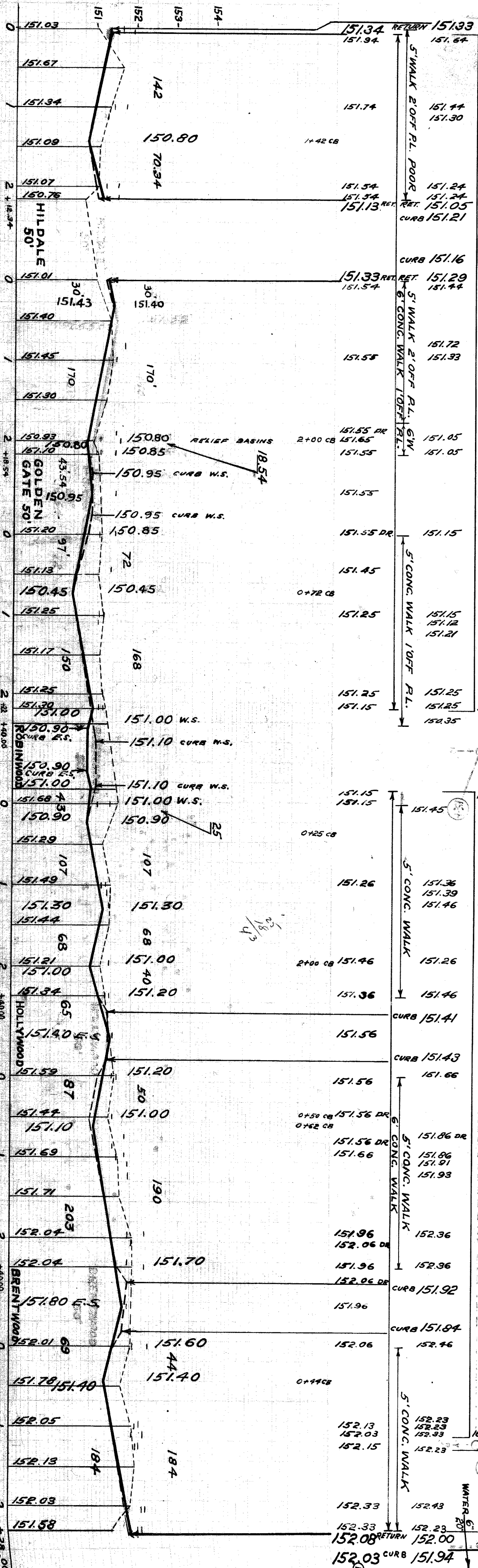
SEWER	JOB NO.	PROGRESS	QUANTITIES	LOTS	CITY	LOTS	CITY	DESIGNED BY	J.P. HAFNER
INDEXED	BLUE PRINT ISSUED FOR:	DATE	EXCAVATION	2 239	575	2 239	575	TRACED BY	J.P. HAFNER
REVISIONS	GRADE ONLY		STRAIGHT CURB NEW					CHECKED BY	
	CATCH BASINS		8" CURB - HEIGHT 24"					APPROVED	
	PAVING-CLASS.		CIRCULAR CURB	4 818	1 033	2 581	711	W.D. Wallace	ENGINEER OF STREETS
C-324A	C-390	C-733	PAVING 8:6:8			4 560	382	Martin R. Taylor	ASSISTANT CITY ENGINEER
C-326A	C-585	C-739	CONCRETE BASE			936	1 396		
C-327	C-586	C-739B	WALKS			1 116	1 116		
	DEPT. OF WATER SUPPLY		C.B. - CONSTRUCT			1 116	1 116		
	GAS CO.		C.B. - ADJUST.			1 116	1 116		

CARD NO.	INDEX NO.	TOPO NO.	NAME OF STREET	FROM	TO
17	36		HAWTHORNE	N.P.L. OF GRIXDAL	S.P.L. OF SEVEN MILE

TYPE OF PAYMENT: 3:6:8 ONE COURSE CONCRETE, INTERCAL CURB WIDTH 30"
 RESOLUTION 5-20-47
 FORCED PAVING C.C. Resolution 5-20-47
 Ret# 2946 - Jos. T. Patrick et al - 9/18/46



PLAN	ELEV
ARROW ON HYD. N.W. CORNER OF GRIXDAL	154.94
ARROW ON HYD. SW CORNER OF HILDALE	154.47
ARROW ON HYD. N.W. CORNER OF ROBINWOOD	154.70
ARROW ON HYD. N.W. CORNER OF BRENTWOOD	155.46
SPIKE IN 24" MAPLE S.E. CORNER OF CARDONI AND SEVEN MILE #36.213	152.217



14 - SMH BASINS 4-18-37
 DRAINAGE COMPLETED
 PAVING COMPLETED 9-30-41

CONTRACTOR SHALL FURNISH AND INSTALL STD. FLAT TYPE CATCH BASIN FRAMES AND GRATES. CONTRACTOR SHALL GRADE BACK AT INTERSECTION TO A SECTION CONFORMING TO THE SECTION TO A SECTION CONTRACTOR SHALL INCLUDE COST IN EXCAVATION TOTALS. CONTRACTOR SHALL EXCAVATE AND GRADE EXISTING CATCH BASINS WITH AVERAGE DEPTH OF 12" CONTRACTOR SHALL INCLUDE COST IN EXCAVATION TOTALS. CONTRACTOR SHALL CONSTRUCT 1/16" 3/4" FT. OF STD. 4" WALK 6" FT. WIDE. ALL CURBS SHALL INTERSECT TO BE SEPARATE TYPE AT INTERSECTION. CONTRACTOR SHALL MAINTAIN ALL OLD CASTINGS TO D.R.W. TYPED AT STAKE PAIR AND JOHN R. ADJUST TOPS OF 2-EXISTING BASINS TO ELEV. 150.05. REUSE OLD FRAMES AND TOPS.

151.03, 151.67, 151.34, 151.09, 151.07, 160.76, 151.01, 151.43, 151.40, 151.45, 170, 151.30, 150.93, 150.80, 151.10, 43.54, 150.95, 151.20, 151.13, 150.45, 151.25, 151.17, 150, 151.25, 151.30, 151.00, 151.29, 151.49, 151.30, 151.44, 151.21, 151.00, 151.34, 151.44, 151.59, 151.20, 151.44, 151.59, 151.44, 151.71, 152.04, 152.04, 151.80, 152.01, 151.78, 151.40, 152.05, 152.13, 152.03, 151.58