

DEPARTMENT of PUBLIC WORKS DETROIT  
 CITY ENGINEERS OFFICE - DIVISION OF PAVING DESIGN  
**STREET PAVING PLAN**

**HARTWELL AVE.**  
 S.P.L. of EATON  
 S.P.L. of CHALFONTE

ASBEN 287-21  
 DETROIT 4882  
 SHEET 1  
 OF 2 SHEETS  
 WIDTH 30'

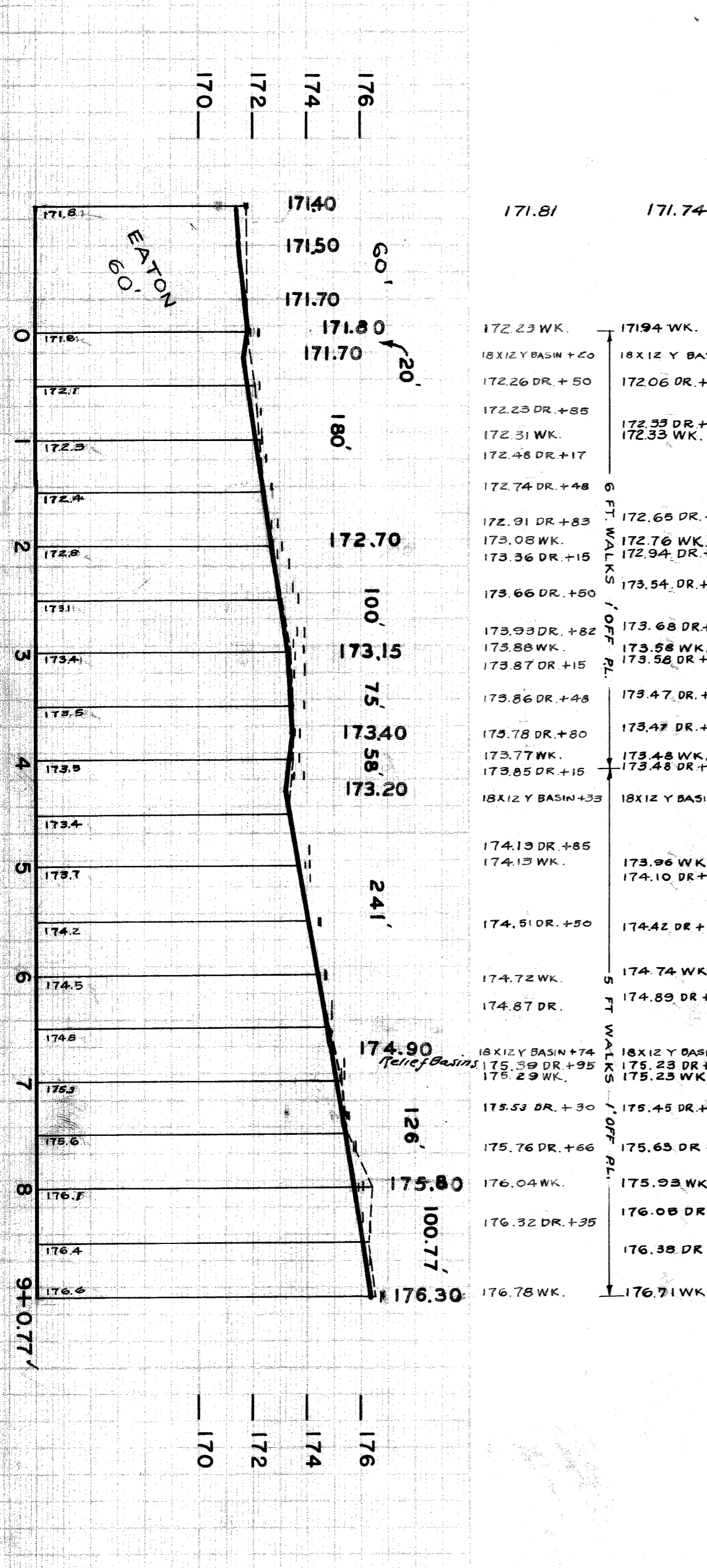
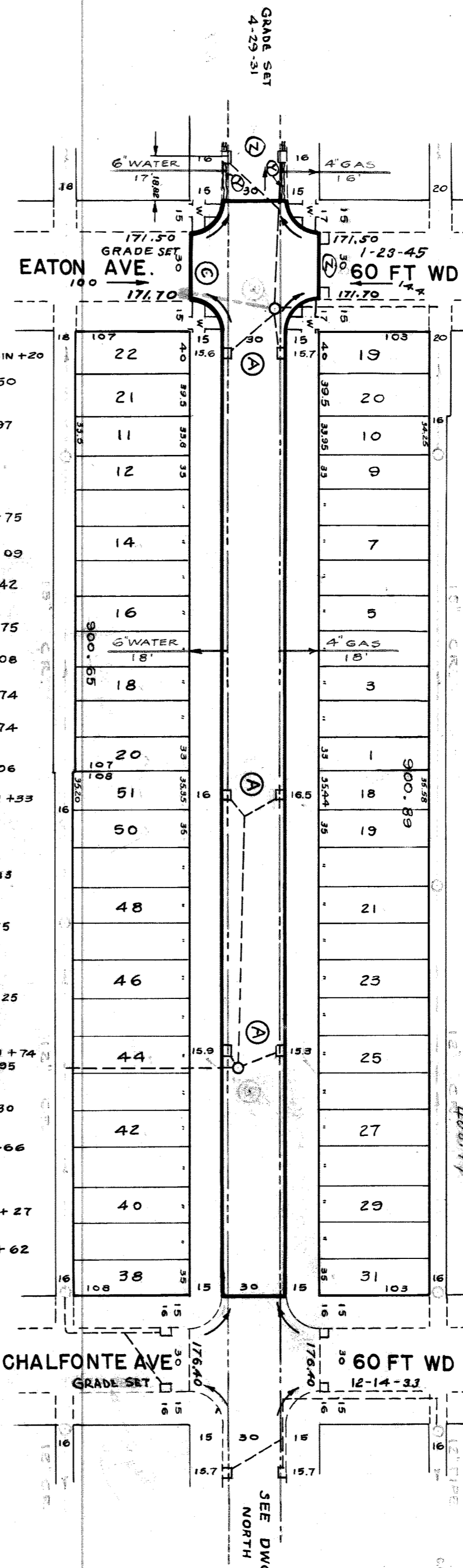
DATE 4-15-47  
 FORCED PAVING C.C.R. 7-29-47  
 REGISTERED BY RALPH NICKERSON

SEWER	Reduced Assessed Length and Total Length Quantities	P.M. 3-27-48
MANHOLE	PLAN SCALE DISTORTED	LOTS & ALLEYS 1" = 100'
STREET WIDTHS	1" = 50'	STREET WIDTHS 1" = 50'
PAVING COMPLETED	C.C. B-31-48	
DRAINAGE COMPLETED		
NOTE:	BEFORE STARTING CONSTRUCTION CONTRACTOR MUST CHECK WITH UTILITIES FOR LOCATIONS OF EXISTING STRUCTURES WHETHER OR NOT INDICATED ON PLANS	

QUANTITIES	ESTIMATED	FINAL
EXPLANATION	CU YDS	CU YDS
NEW CURB	2,299	463
PAVING	5,525	1,387
SIDEWALK	50 FT	1,296
MANHOLES	ADJUST	7
ADJUST	CONSTRUCT	10
ADJUST	CONSTRUCT	3
SEWER	CONSTRUCT	74
SEWER	CONSTRUCT	654
SEWER	CONSTRUCT	39
SEWER	CONSTRUCT	659

DESIGNED BY	MATHESON
DRAWN BY	
CHECKED BY	S.A.S. - Robt. R. Ream
APPROVED BY	<i>[Signature]</i>
ENGINEER OF STREETS	<i>[Signature]</i>
ASST. CITY ENGINEER	<i>[Signature]</i>

DATE	11-20-47
CITY	DETROIT
LOT	28
AREA	1.1
PERMITS	5-5
COST	280,000
ADVERTISING	3,487.96
INSPECTION	80.20
TOTAL	700.17
RECORD NO.	480,991
INDEX TO NO.	68
INDEX NO.	84



- NOTES (FOR SHEET 1 OF 2)**
- AT (A) ADJUST TOPS OF EXISTING 18"x12" Y BASINS
  - AT (A) ADJUST TOPS OF 4 SEWER OR WATER MANHOLES.
  - AT (C) CONSTRUCT 1 STD. 18"x12" Y BASIN AND CONNECT TO EXISTING MANHOLE FURNISH & INSTALL DOME TYPE GRATES & FRAMES.
  - CONTRACTOR SHALL Haul ALL OLD CASTINGS TO DEP. YARD AT STATE FAIR AND JOHN R. UNLESS OTHERWISE NOTED.
  - CONTRACTOR SHALL FURNISH AND INSTALL FLAT TYPE CATCH BASIN FRAMES & GRATES.
  - BACKFILL SEWER PIPE TRENCH WITH APPROVED SAND GRAVEL MATERIAL.
  - ALL CURBS WITHIN STREET INTERSECTIONS TO BE SEPARATE TYPE II OR INTEGRAL TYPE III.
  - DIRT ROADWAYS AT ENDS OF PAVEMENT SHALL BE GRADED BANK & STOUED TO DEEP UNIFORM FOR DISTANCE OF 10 FT. TO MEET EXISTING GRADES. COST TO BE INCLUDED IN EXCAVATION TOTALS.
  - CONTRACTOR SHALL EXCAVATE AND GRADE 2 DITCHES EACH APPROX. 30 FT. TO EXISTING CATCH BASINS WITH AN AVERAGE DEPTH OF 0.8 FT. - CONTRACTOR SHALL INCLUDE COST IN EXCAVATION TOTALS.
  - CONSTRUCT 576 SQ. FT. OF STD. 4" WALK
  - ADJUST TOPS OF 4 EXISTING CATCH BASINS IF NECESSARY AT UNIT COST FOR BASIN ADJUSTMENTS.

SEE DWG. NORTH

BENCH MARKS

Elev.

169.958  
 173.09  
 174.69  
 175.31  
 177.15  
 179.85

94388