

12 B.L. 10-2-49

SEWER	
REVISIONS	
SUPPLEMENTARY DETAILS	
C-324A	C-587 C-739B
C-325	C-524 C-733 C-938
C-326A	C-585 C-739
C-327	C-586 C-739A

NOTE: BEFORE STARTING CONSTRUCTION CONTRACTOR MUST CHECK WITH UTILITIES FOR LOCATIONS OF EXISTING STRUCTURES WHETHER OR NOT INDICATED ON PLANS.

PLAN SCALE: 1" = 100'  
STREET WIDTHS: 1" = 100'

LOTS & ALLEYS: 11-19-49  
DRAINAGE COMPLETED: 11-19-49  
PAVING COMPLETED: C.C. 11-19-49

QUANTITIES	ESTIMATED	FINAL
EXCAVATION CU YDS.	310	
FILL CU YDS.	62	
PAVING TUNIF 50 YDS.	525	
Pav't. Removal Sq. Yds.	45	
SIDEWALK SQ. FT.		
MANHOLES ADJUST		
CONSTRUCT		
BASINS		
SEWER 42" LIN. FT.	155	

HOR. SCALE: 1" = 30'	BOOK: 1647	PAGE: 32
VERT. SCALE: 1" = 2'	DATE: 9-22-49	DRAWING: 9-21-49
PLAN	PROFILE	COMPUTED
JC	JC	F.F.
CHECKED BY: JJ	GRADE	R2
LOT 2L	LENGTH	CITY
TOTAL RL	LENGTH	CITY
COBT ADVERTISING	LOTS	
COBT INSPECTION		

DESIGNED BY: J. CHANDLER  
DRAWN BY: J. CHANDLER  
TRACED BY: Robert R. Room  
CHECKED BY: Robert R. Room  
APPROVED BY: *J. F. Wallace*  
ENGINEER OF STREETS  
DEPUTY CITY ENGINEER

CONTRACT NO. PRIVATE

DEPARTMENT OF PUBLIC WORKS DETROIT  
CITY ENGINEERS OFFICE - DIVISION OF PAVING DESIGN  
STREET PAVING PLAN

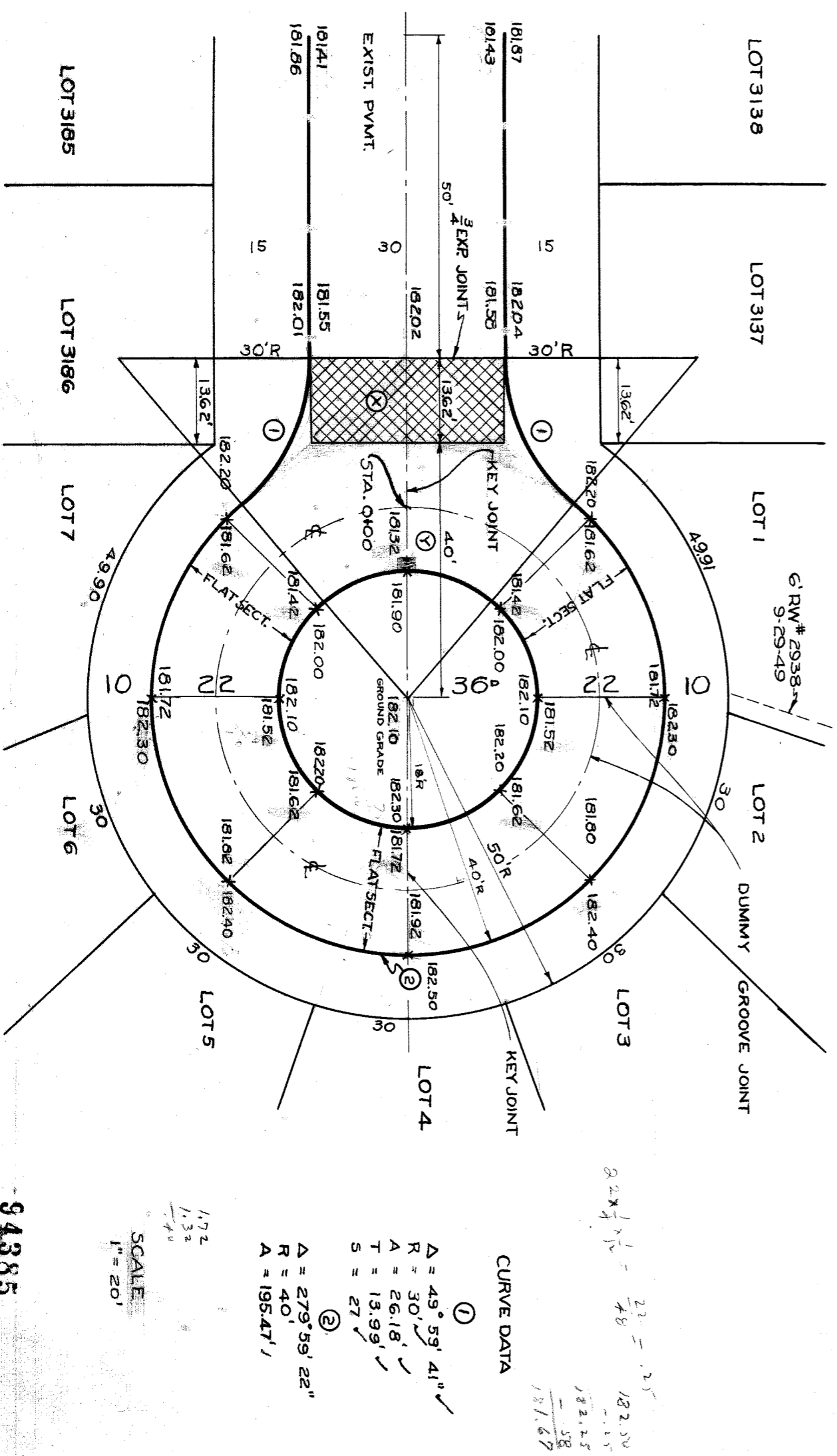
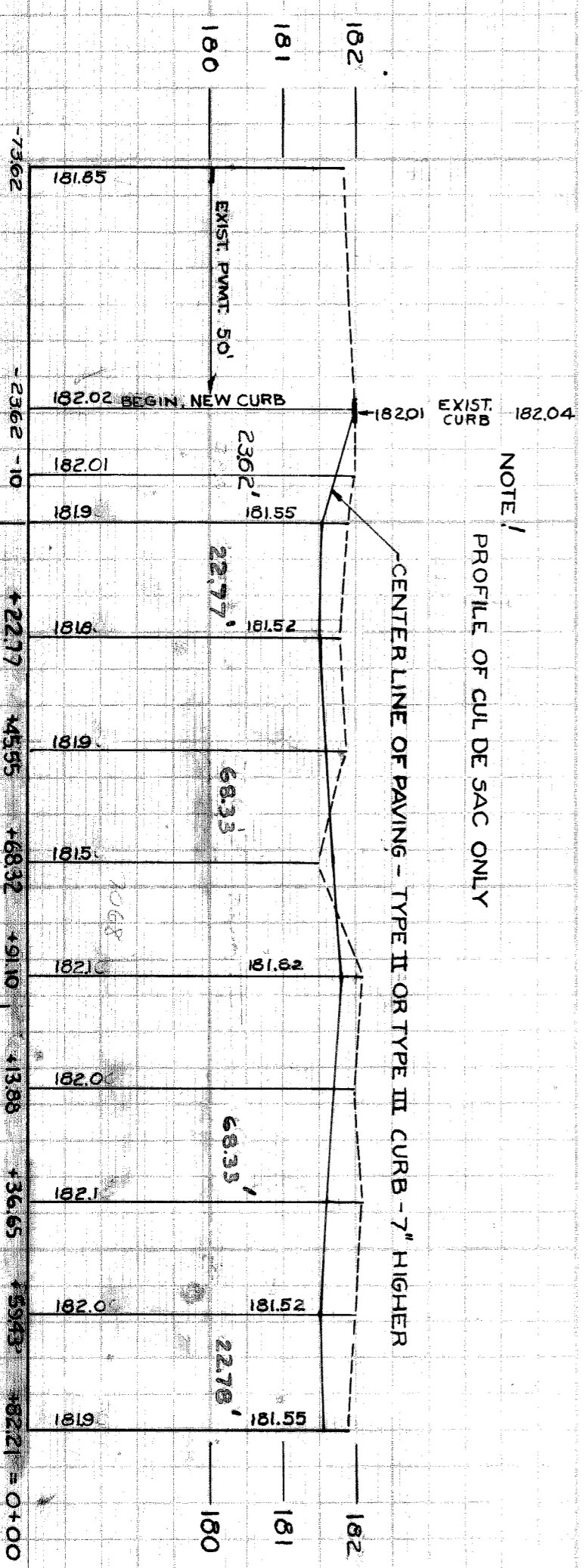
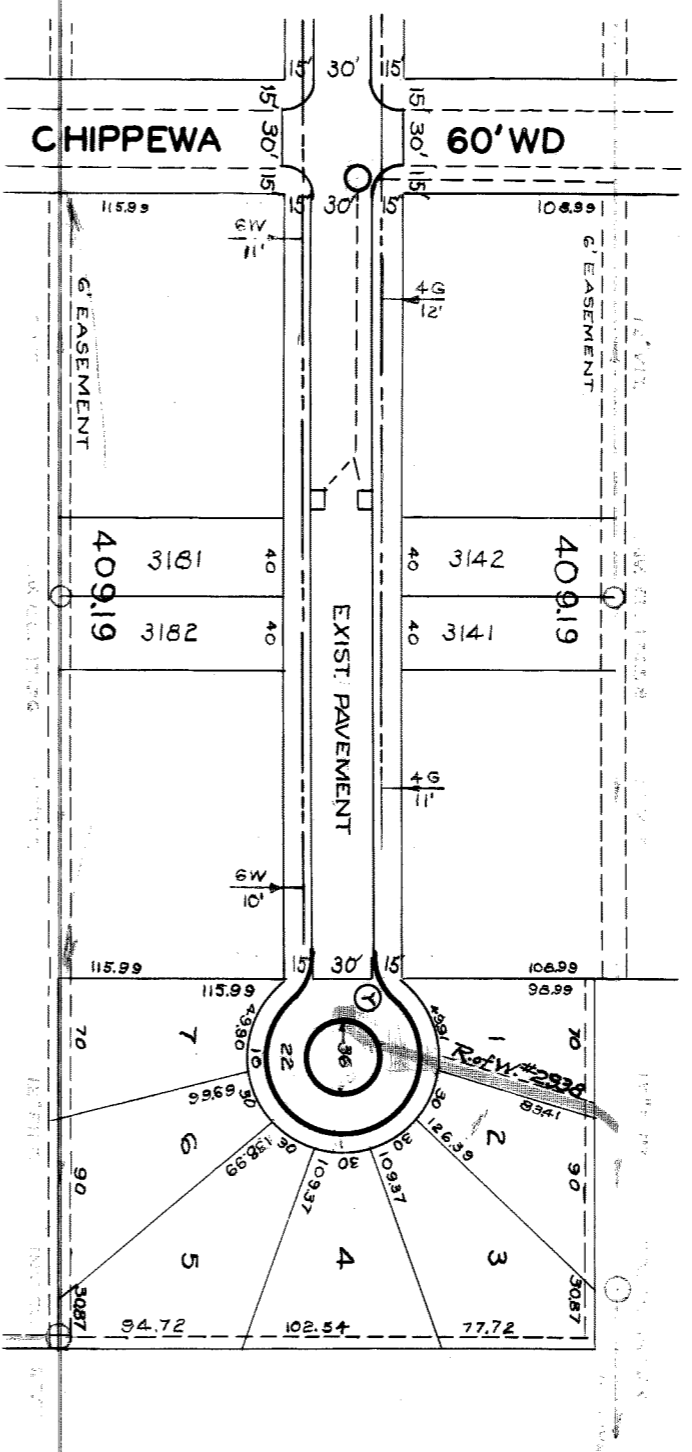
NAME OF: HARTWELL - CUL DE SAC -  
STREET: 409 1/2 N. OF N.P.L. CHIPPEWA  
OR SEP. TYPE II  
TYPE OF PAVEMENT: 7" UNIFORM

ASSIGN NO. 3252-11  
PETITION NO. \_\_\_\_\_  
SHEET OF 1  
NO. SHEETS

RECORD NO. 64 87  
INDEX TO NO. 87

FROM: 409 1/2 N. OF N.P.L. CHIPPEWA  
TO: 489 1/2 N. OF N.P.L. CHIPPEWA

DATE: 9-22-49  
SCALE: 1" = 20'



NOTES

AT (X) REMOVE 45 SQ. YDS. EXISTING PAVEMENT & CURBS (CROSS HATCHED AREA)

AT (O) CONSTRUCT 1 STD. 10' x 12' Y FLAT TYPE BASIN COMPLETE & CONNECT TO EXISTING OUTLET AS SHOWN.

DUMMY GROOVE JOINTS ON CENTER LINE & QUARTER POINTS OF PAVING

BENCH MARKS

18055 (80.547 REC.)  
18464  
18552

Dr. R. C. Mackle and So. 404 Pontiac Rd.  
Wo. 5-4477

CURVE DATA

① Δ = 49° 59' 41"  
R = 30'  
A = 26.18'  
T = 13.99'  
S = 27'

② Δ = 279° 39' 22"  
R = 40'  
A = 195.47'

SCALE: 1" = 20'

94385