

W.P.A. SERIES-N
DEPARTMENT OF PUBLIC WORKS DETROIT
CITY ENGINEER'S OFFICE - DIVISION OF PAVING DESIGN
STREET PAVING PLAN

WATER 80 7-45-38

C-4163

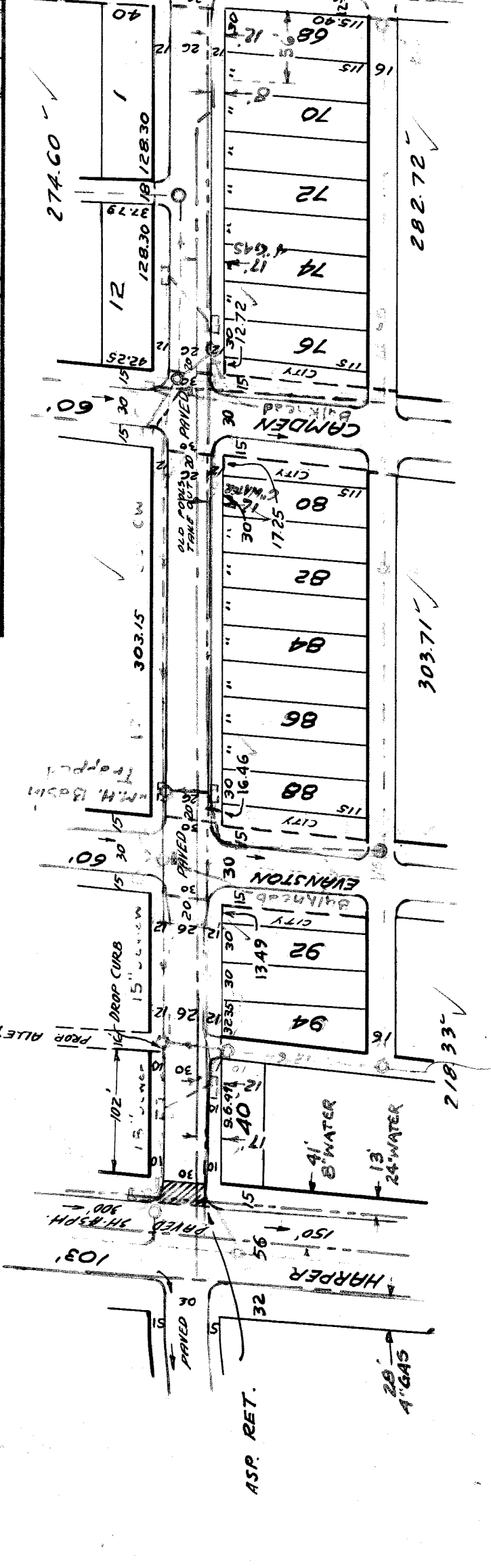
HOR. SCALE	1" = 100'	BOOK	1310	PAGE	58
VERT. SCALE		DATE	4-11-38		
PLAN		PROFILE			
RECORDED	INDEX	CHECKED	COMPUTED		
126 39	428 38	14	14		
LOT	ST. NO.	LENGTH	CITY	ST. NO.	LENGTH
126 39	1	1507.02		753 57	753 57
126 40	1	1239.2		61 96	61 96
TOTAL	2	1630.94		815 47	815 47

CIRCLES	QUANTITIES	LOTS	CITY	LOTS	CITY	BOOK	PAGE
AT NO. Δ	EXCAVATION						
	STRAIGHT CURB NEW						
	OLD CURB RESET						
	CIRCULAR CURB						
	PAVING						
	CONCRETE BASE						

DESIGNS BY S. J.	INDEX NO.	TOPO NO.
	26	57
RECORD NO.		

DESIGNED BY *Vignelli* APPROVED
DRAWN BY *C. Collins* ENGINEER OF STREETS
CHECKED BY *Vignelli* *Martin* ASST. CITY ENGINEER

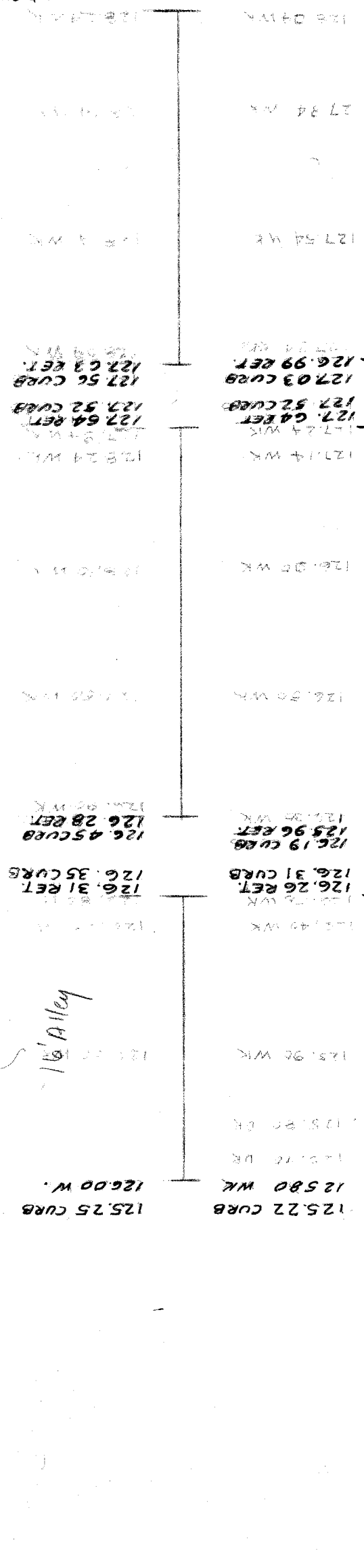
CLASS "B" TYPE OF PAVEMENT 8" Macadam + 2 1/2" OIL AGG WIDTH 26'



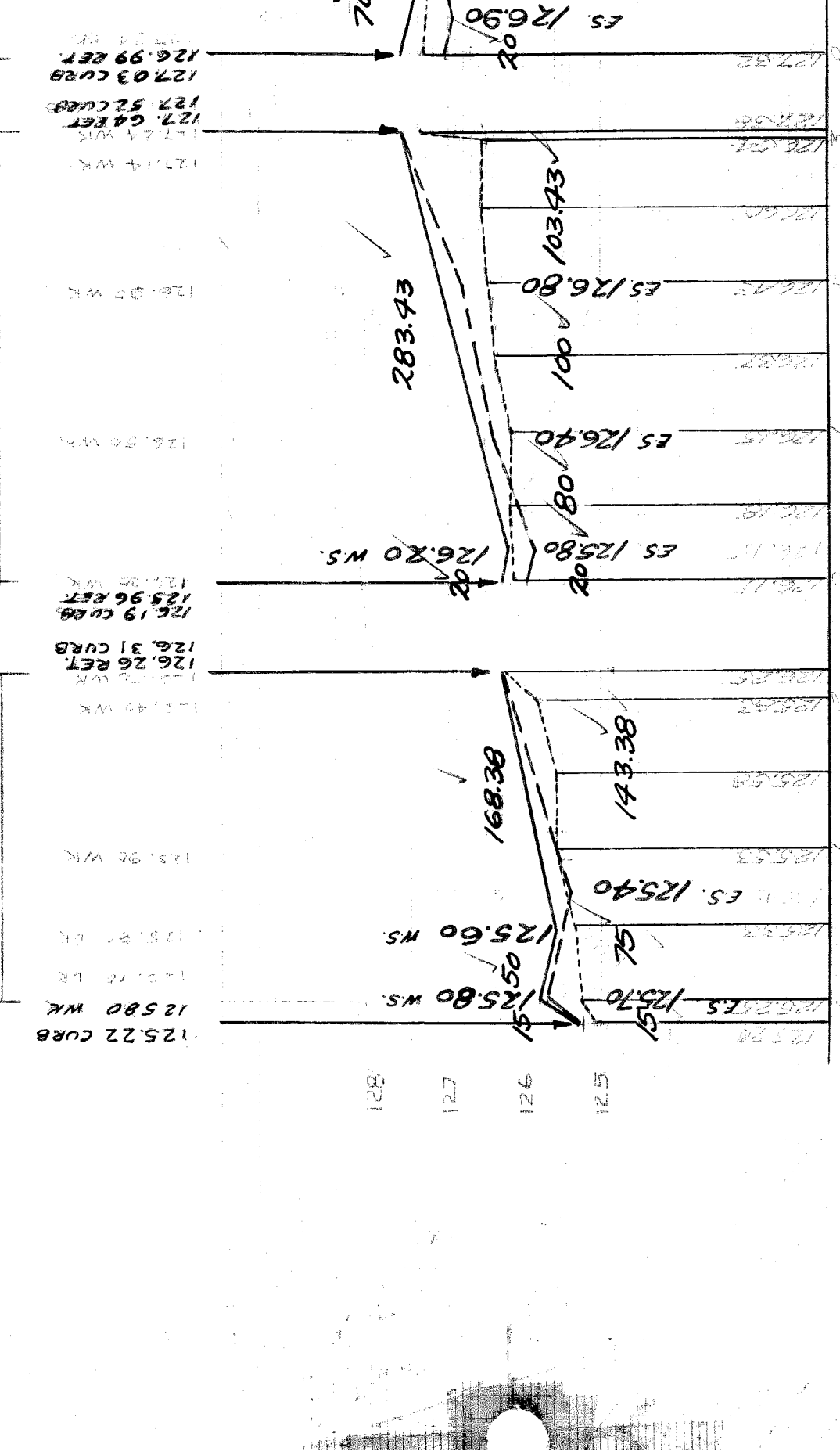
SUMP MANHOLE
DESIGNS BY W.P.A.
Installed 5-2-38
INSTALL ONE ADDITIONAL BASIN EXISTING POOLS & BASINS AT HARPER & HARRELL FEB. 13-1940-N.W. NEW

BENCH MARKS
EL. 128.96
130.26
131.07

ARR ON HYD. NE. COR. HARRELL & HARPER
ARR ON HYD. S. CAMDEN E. HARRELL
ARR ON HYD. S. WADE E. HARRELL



WATER MAINS 12.00 W.



DRAINAGE COMPLETED...
PAVING COMPLETED. 10/26/40.

Note: For C.B.'s Relocation
1961 Sec Lat. Sewer #7042

54380