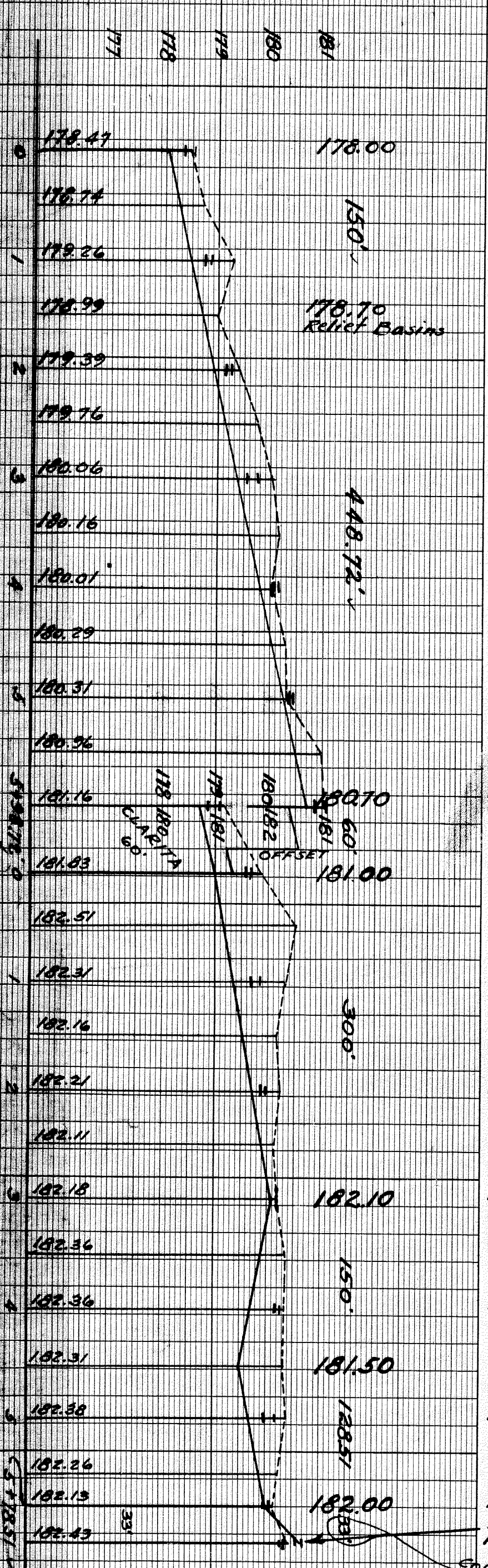
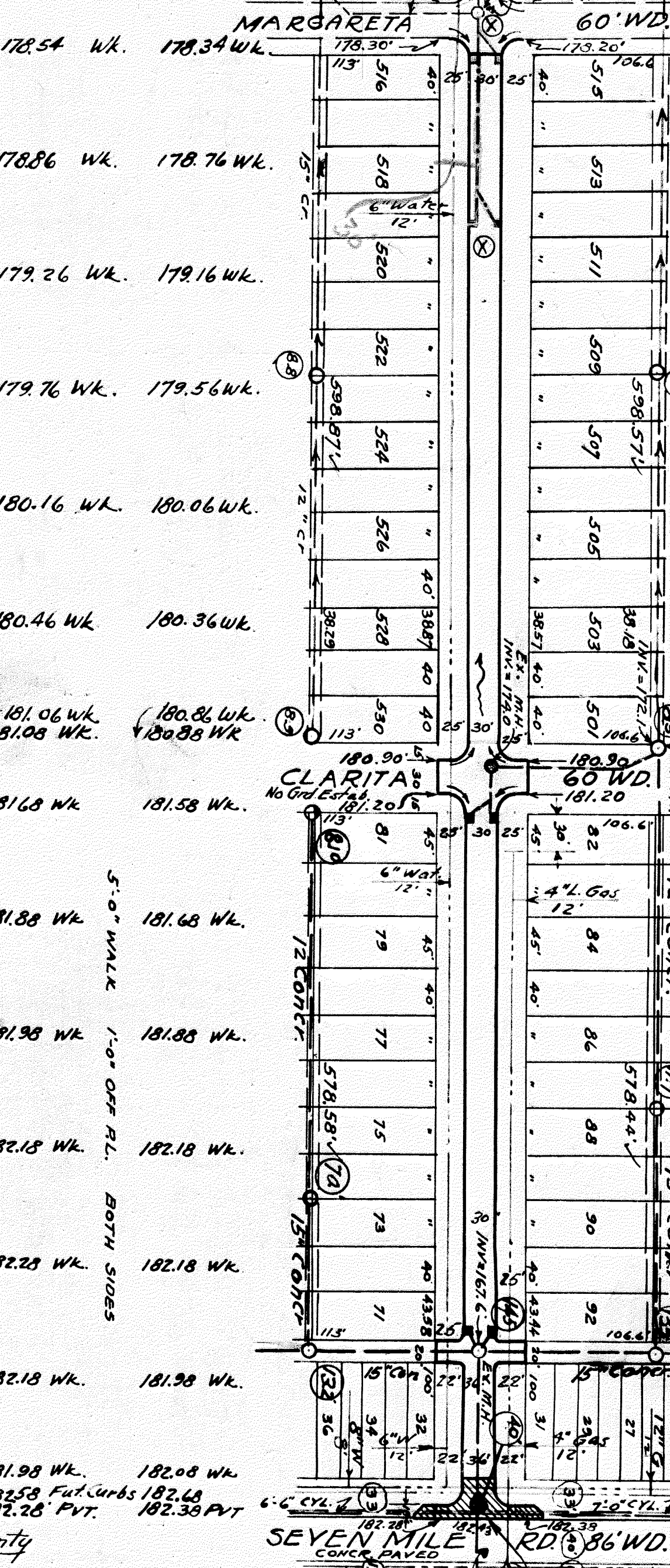


SEWER INDEXED	PROGRESS	QUANTITIES	LOTS	CITY	NON. SCALE 1" = 2'	BOOK 918-A PAGE 83	DESIGNED BY
REVISIONS	START	EXCAVATION	LOT	CITY	PLAN SCALE 1" = 2'	DATE 12-29-42	DR. HOLLER
BLUE PRINT ISSUED FOR:	FINISH	STRAIGHT CURB NEW			CNA PROFILE		TRACED BY
GRADE ONLY		OLD CURB RESET			CNA GRADE		CHECKED BY
CATCH BASINS		CIRCULAR CURB			CNA COMPUTED		R.R.R.
PAVING CLASS.		CONCRETE CURB			CITY		APPROVED
DEPT. OF WATER SUPPLY		CONCRETE BASE			LOT		ENGINEER OF STREETS
GAS CO.					LENGTH		ASST. CITY ENGINEER

At Construct 2 Std 18" x 12" Basins Complete and connect to New M.H. as called for on Section South.



DEPARTMENT OF PUBLIC WORKS DETROIT
CITY ENGINEERS OFFICE ... DIVISION OF PAVING DESIGN
STREET PAVING PLAN

NAME OF STREET: HARLOW AVE
FROM: 50 P.L. CLARITA MARGARETA
TO: 50 P.L. OF 7 MI. RD.

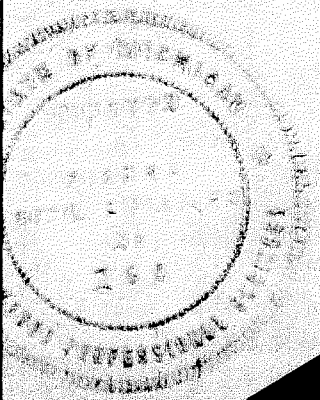
TYPE OF PAVEMENT: FOR DRAINAGE
WIDTH: 30'

INDEX NO: 104
RECORD NO: 104

NUMBER OF SHEETS: 1
SHEET NO: 1

BENCH MARKS	ELEV
P.L. B.M. N. SIDE OF MARGARETA, AT ALLEY WEST OF LINDSAY, IS A SPIKE IN 36" ELM TREE.	181.353
B.M. ON HYDRANT, S.E. COR. CLARITA & HARLOW	184.28
B.M. ON S.E. COR. 7 MILE & HARLOW	185.08

By D.P.W. Charita to 7 MI.
DRAINAGE COMPLETE
PAVING COMPLETED



Approved by S.S. Bunkle
1748 Woodward 3-19-45
Pulford & Coates

See 1945 County Plans

CONSTRUCT CONCRETE RETURN WITH 10' WIDENING. SEE SPECIAL DETAIL. CONCRETE SLAB TO BE 10" THICK IN 7 MILE RD.

E.H.A. RELEASE BY SCHMEDDING 9-11-41