

DEPARTMENT OF PUBLIC WORKS DETROIT
CITY ENGINEERS' OFFICE - DIVISION OF PAVING DESIGN
STREET PAVING PLAN

PROJECT NO. 51-2
NAME OF STREET HARLOW
FROM 11' N. OF N.P.L. OF SEVEN MILE
TO S.P.L. OF CAMBRIDGE

DATE 9-12-50
DRAWN BY N. PRINCE
CHECKED BY S. R. BROWN
CITY ENGINEER

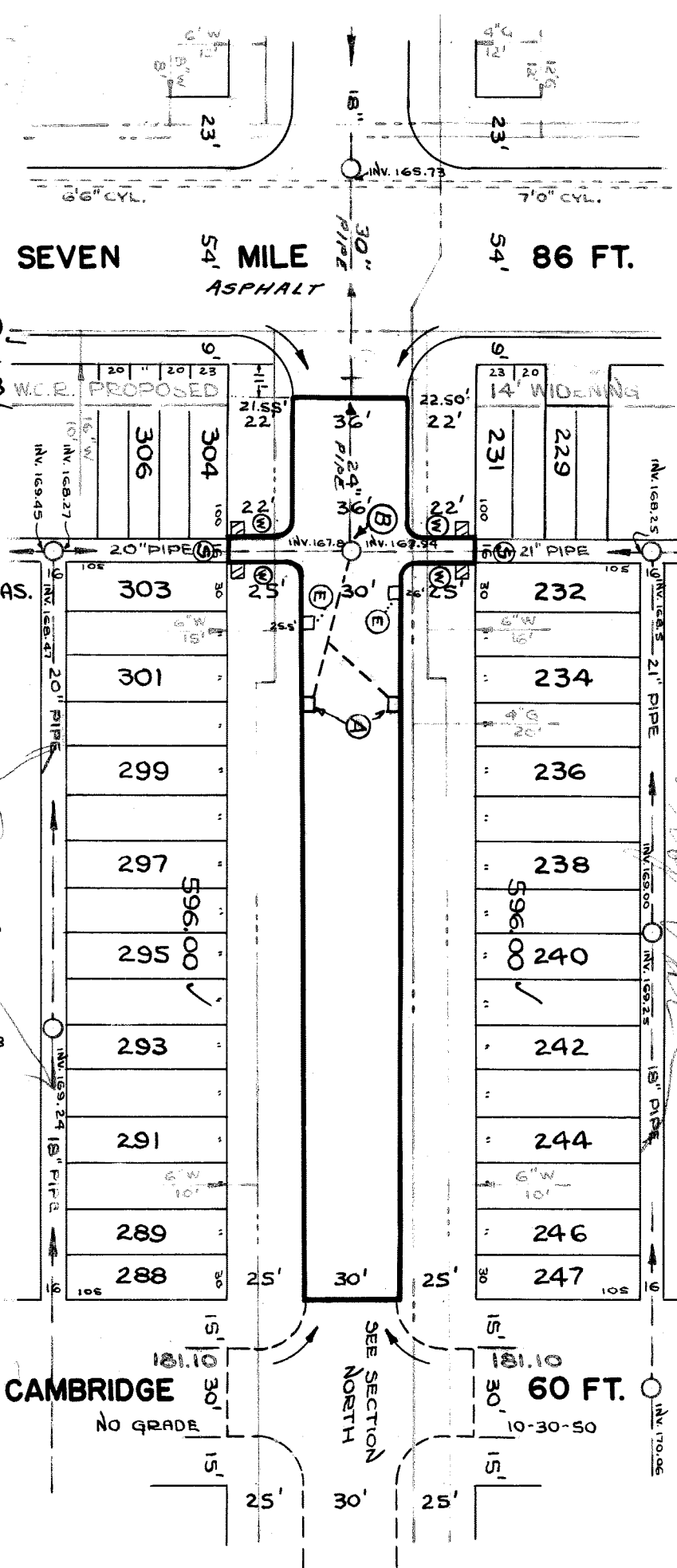
REVISION NO. 63 105
SHEET 1 OF 2
DATE 12-24

REVISION NO.	DATE	BY	DESCRIPTION
63 105	12-24		

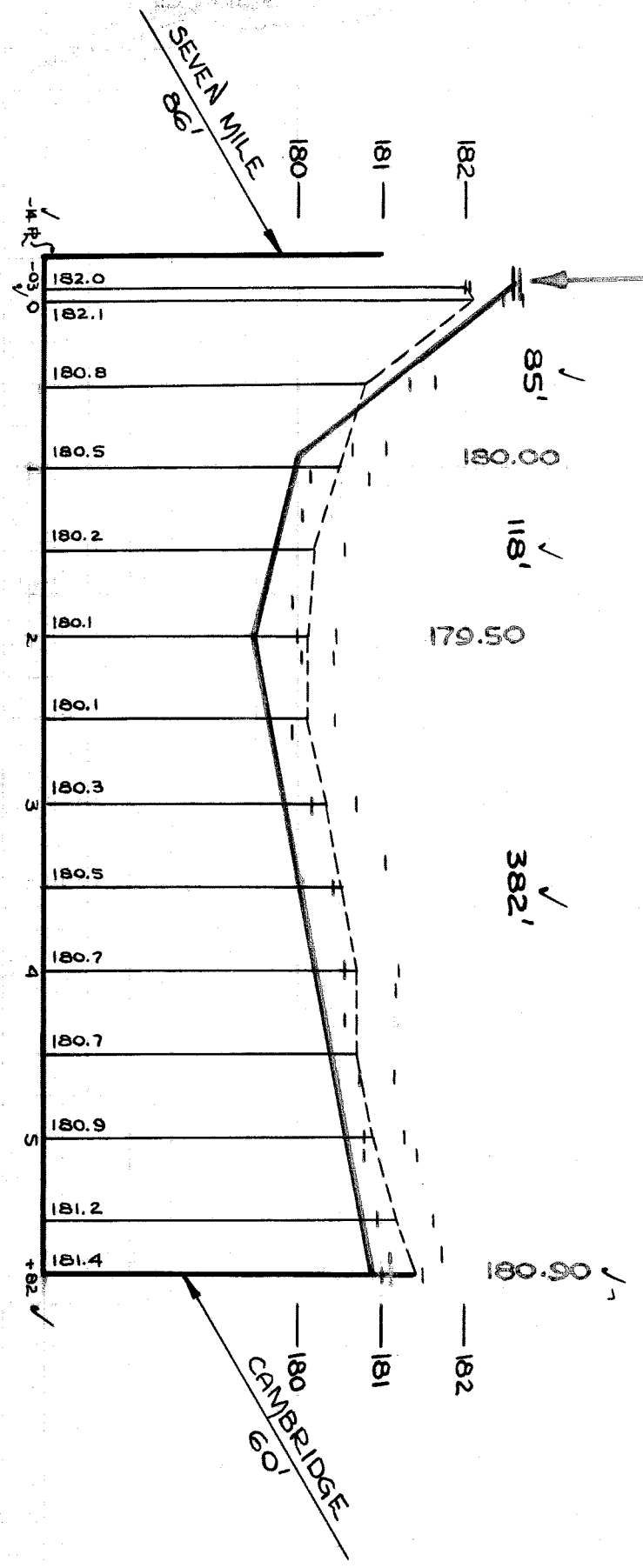
ESTIMATED	ACTUAL	REMARKS
2020	523	
4086	149	
790	100	
1392	1392	
4	4	
10	10	

REVISION NO.	DATE	BY	DESCRIPTION
C-1608	3-31-59		
C-739			
C-738			
C-737			
C-736			
C-735			
C-734			
C-733			
C-732			
C-731			
C-730			
C-729			
C-728			
C-727			

REVISION NO.	DATE	BY	DESCRIPTION
C-327	3-31-59		
C-326			
C-325			
C-324			
C-323			
C-322			



182.45	GUTTER	182.34	L
182.91	CURB	182.89	
182.08	GUTTER	182.01	
182.65	RETURN	182.58	
182.43	W.	182.66	W.
181.31	W.	181.63	W.
181.02	W.	181.02	W.
180.89	W.	180.89	W.
180.58	W.	180.58	W.
180.46	W.	180.46	W.
180.44	DR.	180.44	DR.
180.44	W.	180.44	W.
180.70	W.	180.70	W.
181.01	DR.	181.01	DR.
180.54	W.	180.54	W.
181.18	DR.	181.18	DR.
181.42	DR.	181.42	DR.
181.29	W.	181.29	W.
181.42	DR.	181.42	DR.
180.98	W.	181.64	W.
181.10	W.	181.72	W.
180.68	W.	181.50	W.



BENCH MARKS
APP. ON HYD. N.W. COR. OAKFIELD & CAMBRIDGE
APP. ON HYD. N.E. COR. HARLOW & 7 MILE
APP. ON HYD. N.E. COR. HARLOW & CAMBRIDGE
APP. ON HYD. N.W. COR. WASSON & OAKFIELD
NOTE: R. OFFSET 5' TO 1 IN WALK

FOR SYMBOLS (A), ETC. SEE STD. DET. DRWG. NO. C-327

D.P.W. TO INSTALL DRAINAGE
CONTRACTOR TO ADJUST

54369