

DEPARTMENT OF PUBLIC WORKS DETROIT

CITY ENGINEER'S OFFICE ... DIVISION OF PAVING DESIGN

STREET PAVING PLAN

HALLEY

ASSIGN. NO. 378A-2
SHEET NO. 3 OF 2 SHEETS

CARD NO. INDEX TOPO. NO. 76 III

NAME OF STREET: W.P.L. OF CHAPEL
 FROM: N.P.L. OF DAVISON
 TO: _____

RECORD NO. _____
 TYPE OF PAVEMENT: ONE COURSE CONCRETE - INTEGRAL CURB
 WIDTH: 26'

CONTRACT APPROVED: CC
 DATE: 10-14-50

DESIGNED BY: Jacobi
 DRAWN BY: KANSMAN
 CHECKED BY: IK
 APPROVED: Robert R. ...
 ENGINEER OF STREETS
 DEPUTY CITY ENGINEER

HOR. SCALE: 1" = 60'
 VER. SCALE: 1" = 2'
 DATE DRAWING: 12-27-49
 SHEET SEE OF 3

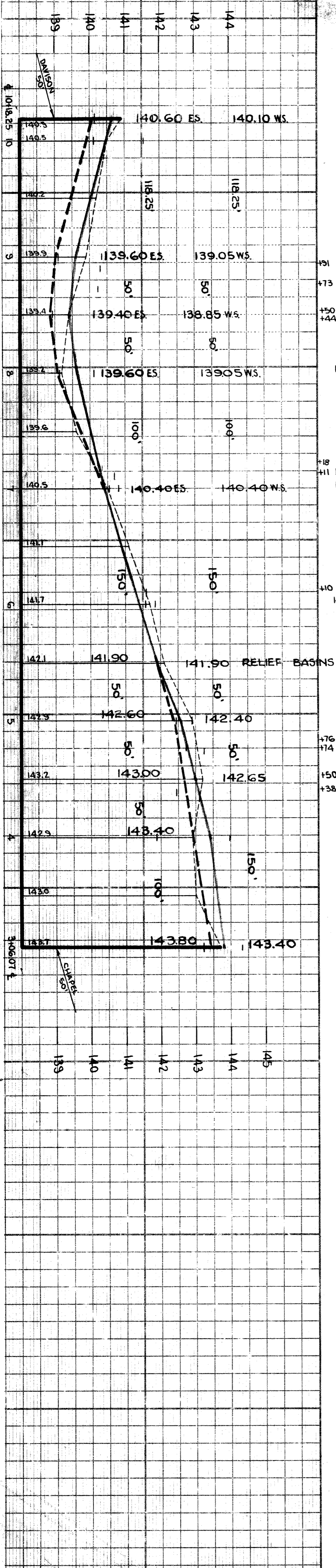
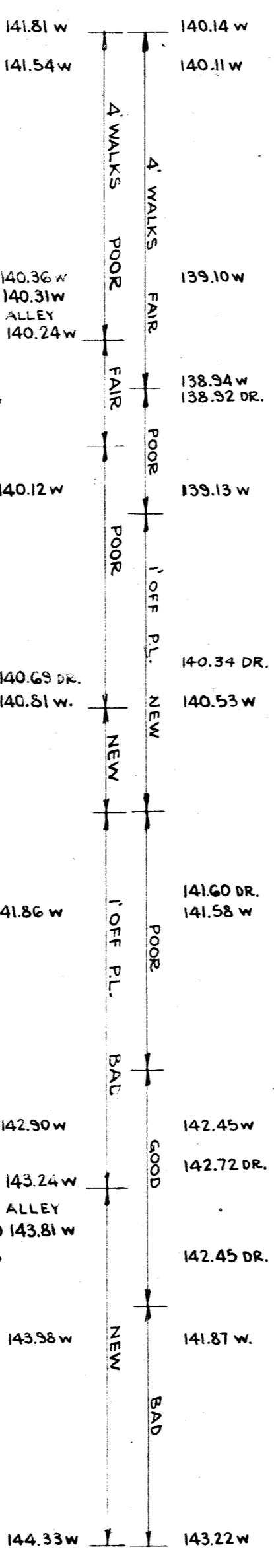
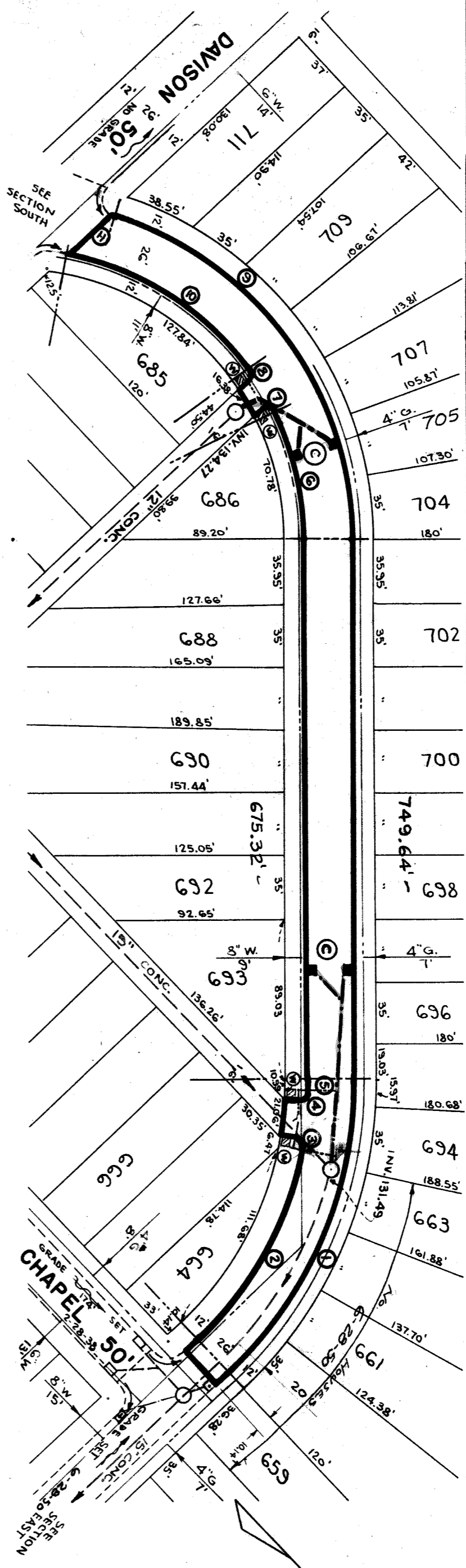
QUANTITIES	ESTIMATED	FINAL
EXCAVATION, CU. YDS.		
NEW CURB, LIN. FT.		
PAVING, SQ. YDS.		
SIDEWALK, SQ. FT.		
MANHOLES, ADJUST		
BASINS, ADJUST		
SEWERS, 12" LIN. FT.		

NOTE: BEFORE STARTING CONSTRUCTION CONTRACTOR MUST CHECK WITH UTILITIES FOR LOCATIONS OF EXISTING STRUCTURES WHETHER OR NOT INDICATED ON PLANS.
 PLAN SCALE: 1" = 60'
 LOTS & ALLEYS: 1" = 60'
 STREET WIDTHS: 1" = 60'
 DRAINAGE COMPLETED: _____
 PAVING COMPLETED: _____

SEWER	REVISIONS	SUPPLEMENTARY DETAILS
C-324A	C-325	C-587
C-324	C-524	C-733
C-326A	C-585	C-739
C-327	C-586	C-739A

CURVE DATA

- ① Δ: 46° 55' 20" R: 1062.41' T: 221.41' S: 1202.3
- ② Δ: 38° 50' 45" R: 195.41' T: 63.21' S: 406.4
- ③ Δ: 92° 21' 12" R: 41' T: 4.32' S: 4.1
- ④ Δ: 94° 21' 12" R: 41' T: 4.32' S: 4.1
- ⑤ Δ: 27° 22' 11" R: 193.41' T: 103.41' S: 168.7
- ⑥ Δ: 37° 50' 45" R: 195.41' T: 63.21' S: 406.4
- ⑦ Δ: 106° 44' 41" R: 41' T: 4.32' S: 4.1
- ⑧ Δ: 82° 10' 11" R: 41' T: 4.32' S: 4.1
- ⑨ Δ: 72° 41' 14" R: 188' T: 171.9' S: 3510.9
- ⑩ Δ: 43° 50' 16" R: 162' T: 64.64' S: 508.7
- ⑪ Δ: 17° 31' 21" R: 10' T: 1.55' S: 3.08
- ⑫ Δ: 26° 15' 53" R: 162' T: 37.89' S: 108.8



NOTE: CONSTRUCT 4 STD. PIPE CATCH BASINS WITH STD. FRAMES AND GRATES AS REQUIRED. CONNECT TO EXISTING C-320A & C-324 OUTLETS AS SHOWN. SEE STD. DRWS. C-320A & C-324

BENCH MARKS

- PL. B.M. #12-250A, N.E. COR. JASON & SCHOOLCRAFT
- ARO. OF HYD. S.W. COR. CHAPEL & HALLEY
- ARO. OF HYD. N.E. COR. 13566 HALLEY & HALLEY
- ARO. OF HYD. N.E. COR. DAVISON & HALLEY

NOTE - PL. OFFSET 3 FEET TO CROSS IN WALK.