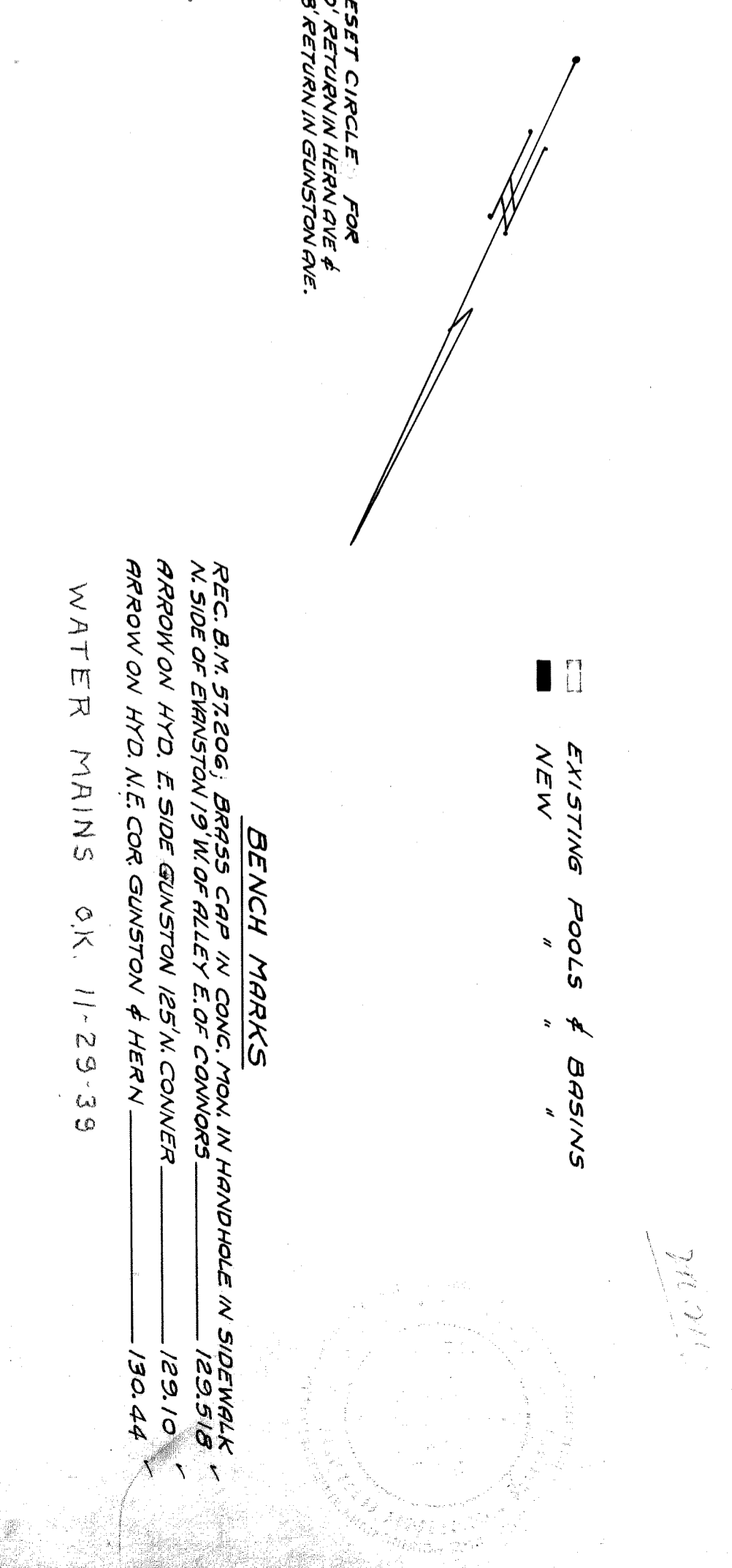
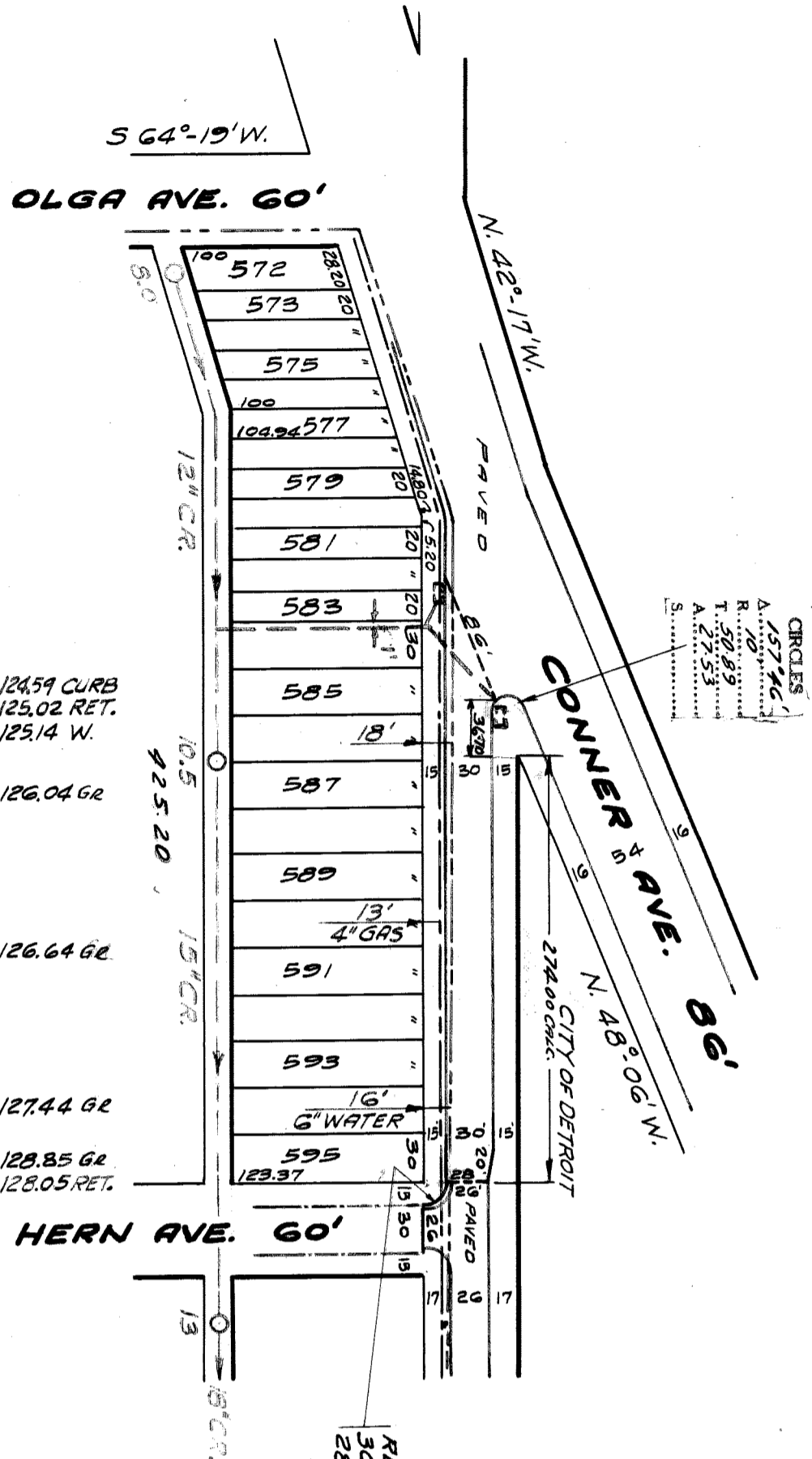


SEWER INDEXED	OK	JOB NO.	G-4043	PROGRESS		QUANTITIES	EXCAVATION	LOTS	CITY	LOTS	CITY
REVISIONS:	10-26-39	BLUE PRINT ISSUED FOR:		DATE		STRAIGHT CURB NEW					
		GRADE ONLY		START		OLD CURB RESET					
		CATCH BASINS		FINISH		CIRCULAR CURB					
		PAVING-CLASS				PAVING					
		DEPT. OF WATER SUPPLY				CONCRETE BASE					
		GAS CO.									

DESIGNED BY	<i>W. J. [Signature]</i>	BOOK/455	PAGE 3
DRAWN BY	<i>B. C. [Signature]</i>	DATE	OCT 20 1939
TRACED BY	<i>[Signature]</i>	VER. SCALE	1" = 2'
CHECKED BY	<i>[Signature]</i>	PLAN	ELI
APPROVED	<i>[Signature]</i>	CHECKED	C.M.A.
		PROF. SCALE	1/8"
		CITY	212
		LENGTH	40
		TOTAL	849
		LENGTH	137
		LENGTH	149
		LENGTH	130

DEPARTMENT OF PUBLIC WORKS DETROIT
 CITY ENGINEERS OFFICE - DIVISION OF PAVING DESIGN
 STREET PAVING PLAN
 GUNSTON 60'
 CONNER 60'
 HERN
 TYPE OF PAVEMENT CLASS B-8" MAC + 2 1/2" OIL AGG. WIDTH 30'



SPECIAL-Y-BASINS BY W.P.R. INSTALLED NOV 16, 1939 - N.Y.

RESSET CIRCLE FOR 30' RETURN IN HERN AVE & 28' RETURN IN GUNSTON AVE.

BENCH MARKS
 REC. B.M. 57206; BRASS CAP IN CONC. MON. IN HANDHOLE IN SIDEWALK N. SIDE OF GUNSTON 19' W. OF RILEY E. OF CONNORS 129.518
 ARROW ON HYD. E. SIDE GUNSTON 125' N. CONNER 129.10
 ARROW ON HYD. N.E. COR. GUNSTON & HERN 130.44
 WATER MAINS O.K. 11-29-39

DRAINAGE COMPLETED 5/4/40
 PAVING COMPLETED 5/4/40

94345