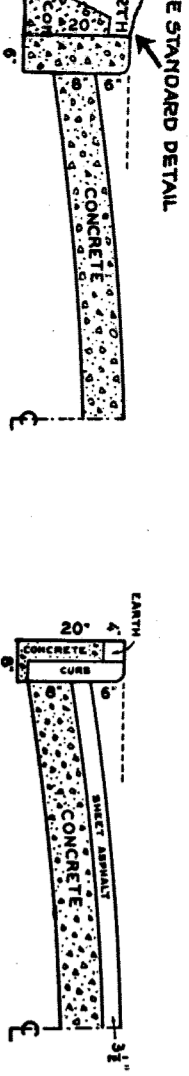


CROSS SECTIONS



TOWNSHIP B0 11-2-38

CLASS "B" PAVING 11-2-38

A-4093 04 13 11-23-38

AT NO.	Δ	RADIUS	TANG.	ARC	SEG.	QUANTITIES	LOTS	CITY	LOTS	CITY
						EXCAVATION				
						STRAIGHT CURB NEW				
						OLD CURB RESET				
						CIRCULAR CURB				
						PAVING				
						CONCRETE BASE				

DEPARTMENT OF PUBLIC WORKS DETROIT
CITY ENGINEERS OFFICE - DIVISION OF PAVING DESIGN
STREET PAVING PLAN

NAME OF STREET: GUILFORD GO'ND
FROM: EVANSTON TO: LANARK

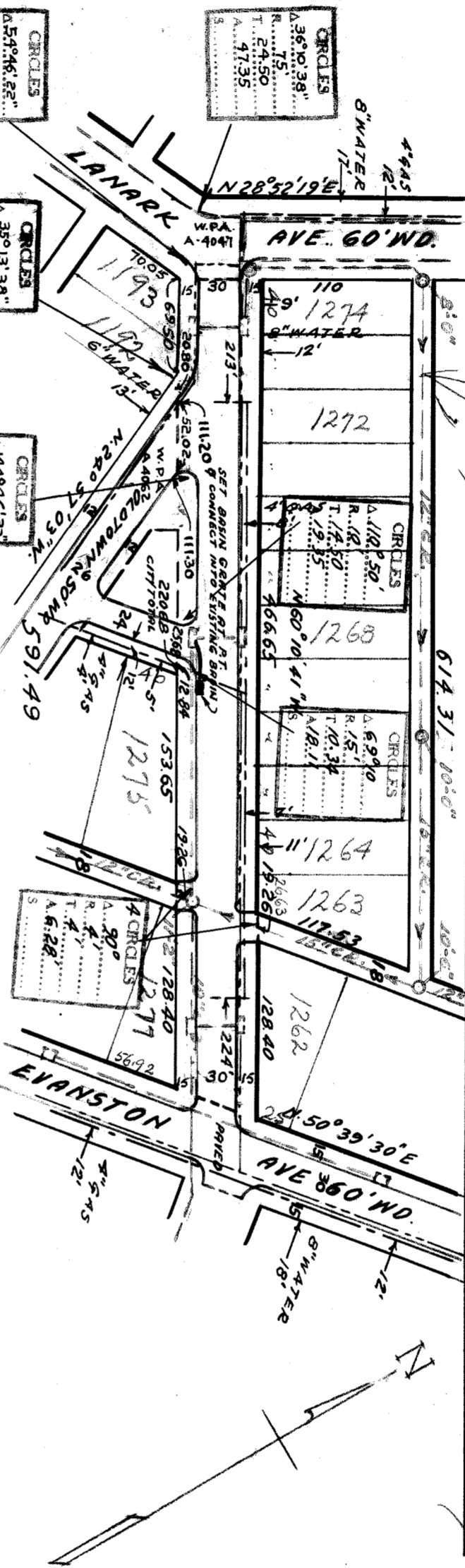
TYPE OF PAVEMENT: INDEXED WIDTH: INDEXED

INDEXED NUMBER OF SHEETS: 1 SHEET NO.: 1

RECORD NO. 36106

PLAN	W.E.	PROFILE	W.E.	COMPUTED	
CHECKED		GRADE	1/6	CHECKED	2/1/36
LOTS	2L	LENGTH		CHECKED	473 1/2
CITY	2L	LENGTH		CHECKED	129 5/8
TOTAL	2L	LENGTH		CHECKED	602 7/2

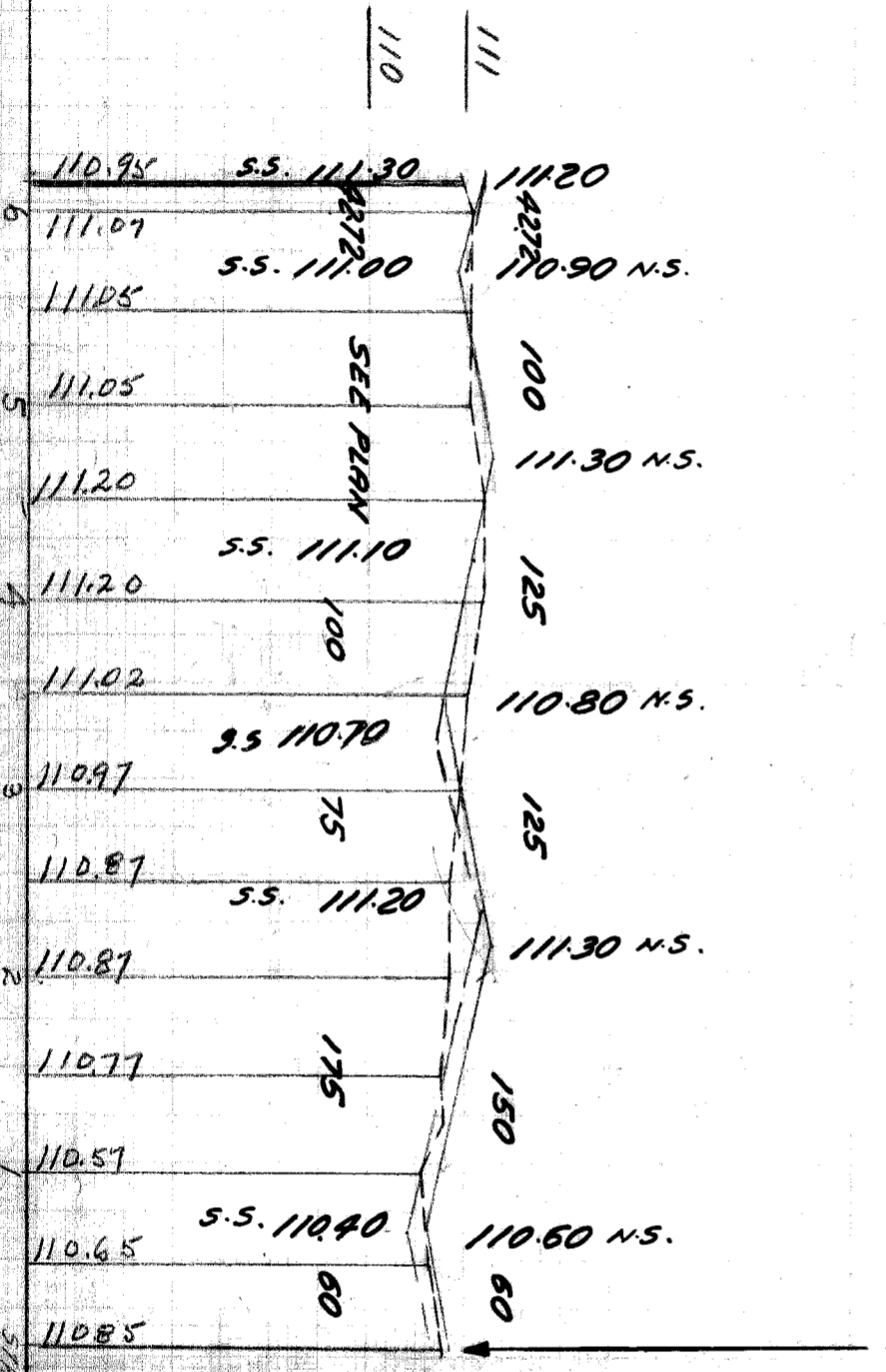
COST ADVERTISING BLANKS _____
COST INSPECTION _____



BENCH MARKS
ARROW ON HYD. S.W. COR. EVANSTON AND GUILFORD 114.072
ARROW ON HYD. E. SIDE GUILFORD INTERSECTION OLDTOWN AND GUILFORD 114.332
ARROW ON HYD. S.W. COR. GUILFORD AND LANARK 114.302

DESIGNED BY W. G. Guller APPROVED _____
DRAWN BY W. G. Guller ENGINEER OF STREETS
TRACED BY _____
CHECKED BY W. G. Guller ASST. CITY ENGINEER

DRAINAGE COMPLETED.....
PAVING COMPLETED 7/29/39



94340