

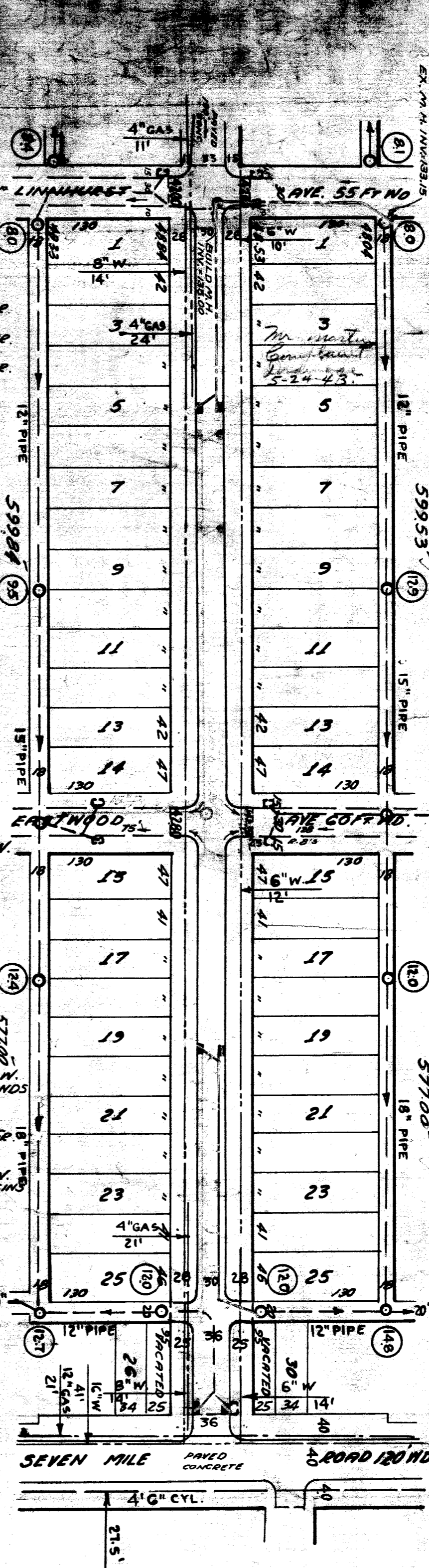
Est. Shilpa

SEWER INDEXED	REVISIONS	JOB NO.	QUANTITIES	LOTS	CITY	LOTS	CITY
		14233	EXCAVATION				
			STRAIGHT CURB NEW				
			OLD CURB RESET				
			CIRCULAR CURB				
			PAVING				
			CONCRETE BASE				

BLANK PRINT ISSUED FOR:	DATE:	START:	FINISH:
CATCH BASINS			
PAVING-CLAMP			
DEPT. OF WATER SUPPLY			
GAS CO.			

VER. SCALE	1" = 2'	DATE	MARCH 5, 1941
PLAN	1/8" = 10'	CHECKED	R.R.R.
CHECKED		GRABED	
COMPUTED		CHECKED	R.R.R.
LOT 21	2,335.7	LENGTH	156.6
CITY 21	270	LENGTH	135
TOTAL 21	2,583.7	LENGTH	139.6

DESIGNED BY: *[Signature]*
 DRAWN BY: *[Signature]*
 CHECKED BY: R.R.R.
 APPROVED: *[Signature]*
 ASSIST. CITY ENGINEER



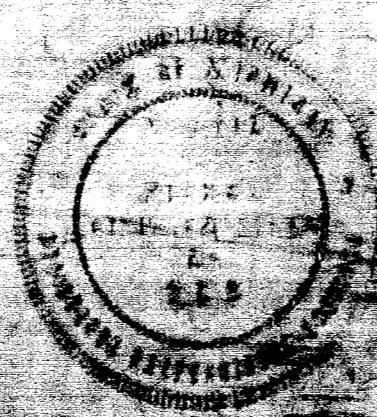
142.71 W 142.71
 142.31 PWT 142.29
 142.23 RET 142.35
 Field Survey Plan 5-24-41

143.01 W 142.81
 142.51 W 142.61 DR
 142.51 DE
 142.31 DE
 142.21 W 142.31
 142.31 W 142.51
 142.51 W 142.71
 143.01 W 143.11
 143.40 W 143.40
 142.71 Gr. 143.41 W
 143.71 W BEGINS
 143.71 W 143.71
 143.31 W 143.41
 143.71 ENDS
 143.91 W 142.11 GR.
 144.21 W BEGINS
 144.61 W 144.21
 144.11 W 144.11
 143.41 W 143.61
 142.76 RET 142.74
 142.37 CORB 142.77

JOB NO. D-4060

DRAINAGE COMPLETED
 PAVING COMPLETED

B.M. ARROW ON HYD. NE CORNER GRUBNER
 AND LINNHURST 145.80
 B.M. SPIKE IN POLE SW CORNER GRUBNER
 AND EASTWOOD 144.14
 B.M. ARROW ON HYD. N.W. CORNER GULLERIE
 AND SEVEN MILE 146.50



DEPARTMENT OF PUBLIC WORKS
 CITY ENGINEER'S OFFICE - DIVISION OF PAVING DESIGN
STREET PAVING PLAN
 GRUBNER AVE.
 S. LINNHURST
 S. SEVEN MILE ROAD
 DRAINAGE

DATE: 12-1-47