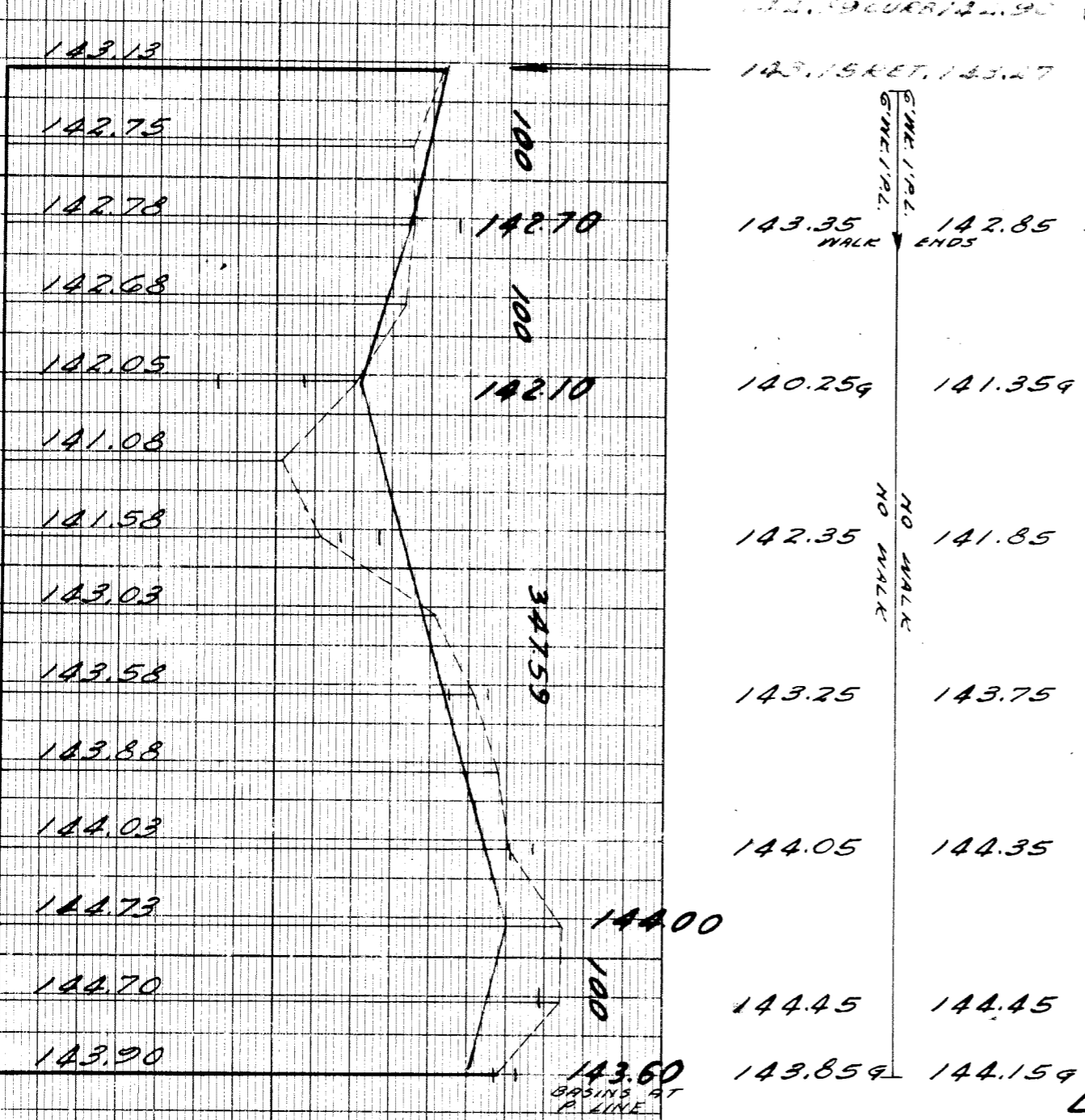
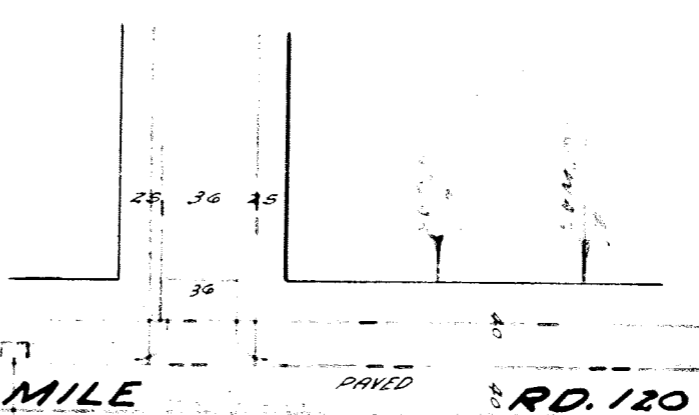


SEWER INDEXED REVISED REVISIONS	JOB NO.	DATE	PROGRESS
	BE USE PRINT ISSUE D FOR	START	FINISH
	GRADE ONLY CATCH BASINS PAVING CLASS		
	DEPT. OF WATER SUPPLY		
		QUANTITIES	
		EXCAVATION	
		STRAIGHT CURB NEW	
		OLD CURB REST	
		CIRCULAR CURB	
		PAVING	
		CONCRETE BASE	
		LOTS	CITY
		LOTS	CITY



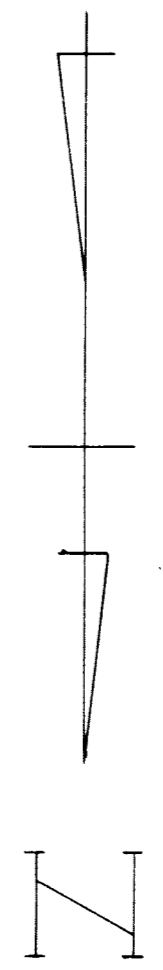
NON SCALE 1/2"=2'	DATE 3-19-40
PLAN EM	PROFILE EM
INCL. 1/8	CHECKED B.G.M.
LOTS 21	255
CITY 21	40
TOTAL 21	295
	CITY 64759

23.27 ACRES NOT DEEDED
JULIUS J. HUBNER 1119 SEVEN MI.
354.34 ±

BUILD MAN-HOLE
(SAME IN LONGHOLM)

DESIGNED BY <i>T. J. Gentry</i>	ENGINEER OF STREETS
DRAWN BY <i>B. J. Gentry</i>	CITY ENGINEER
TRACED BY	
CHECKED BY <i>J. Gentry</i>	
APPROVED	

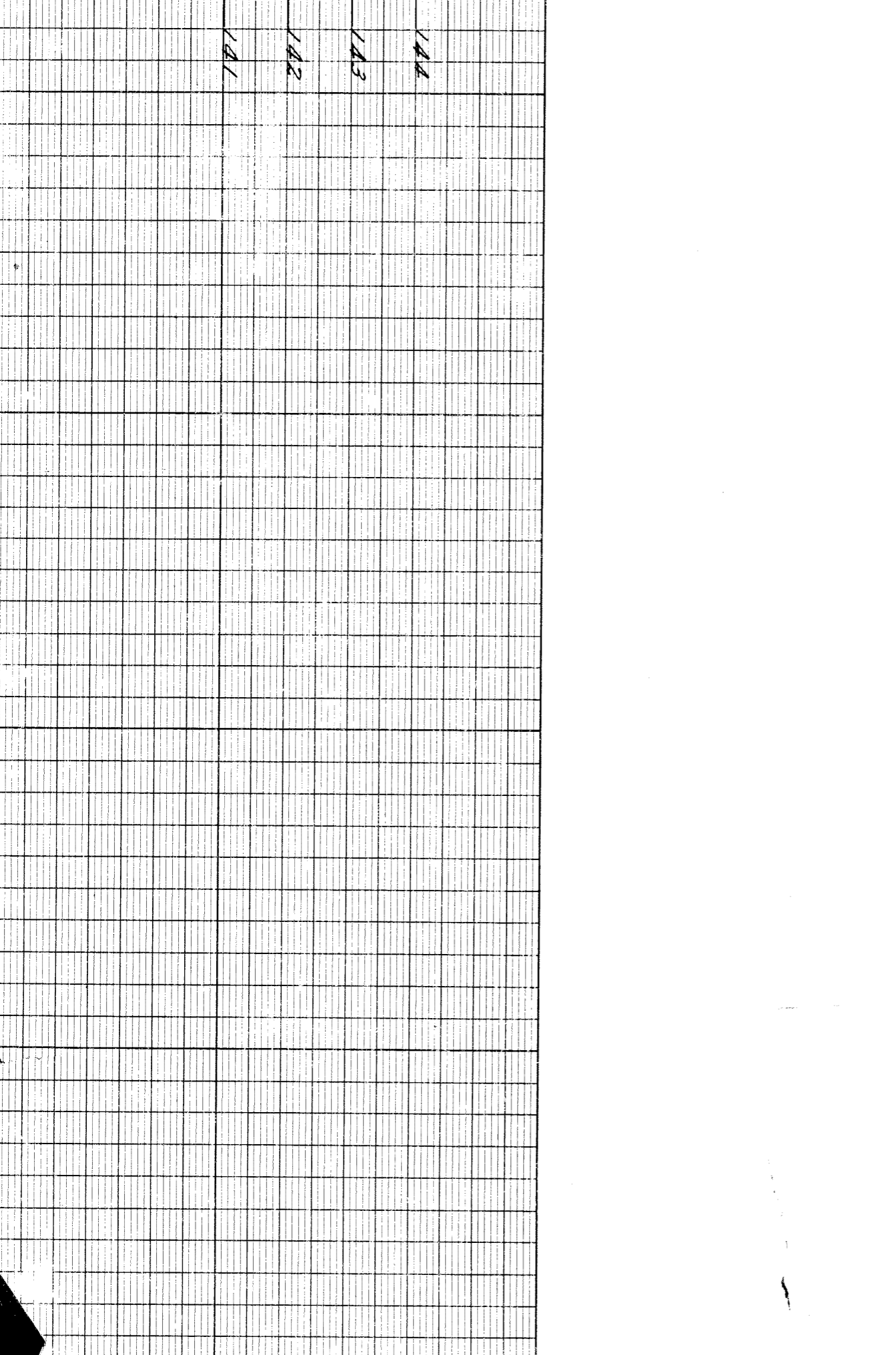
CARD NO.	INDEX TOPO
	NO. 20
	NO. 93
NAME OF STREET	
FROM LAPPIN	TO GRUEBNER 60'
DEPARTMENT OF PUBLIC WORKS CITY ENGINEER'S OFFICE - DIVISION OF PAVING DESIGN STREET PAVING PLAN	
NUMBER OF SHEETS	SHEET NO.
1	1



EXISTING POOLS & BASINS

NEW BENCH MARKS

AROUND N.W. COR. GRUEBNER & SEVEN MILE
S.W. COR. GRUEBNER & LAPPIN



146.00
146.01
146.92