

SEE SYMBOL DETAIL.

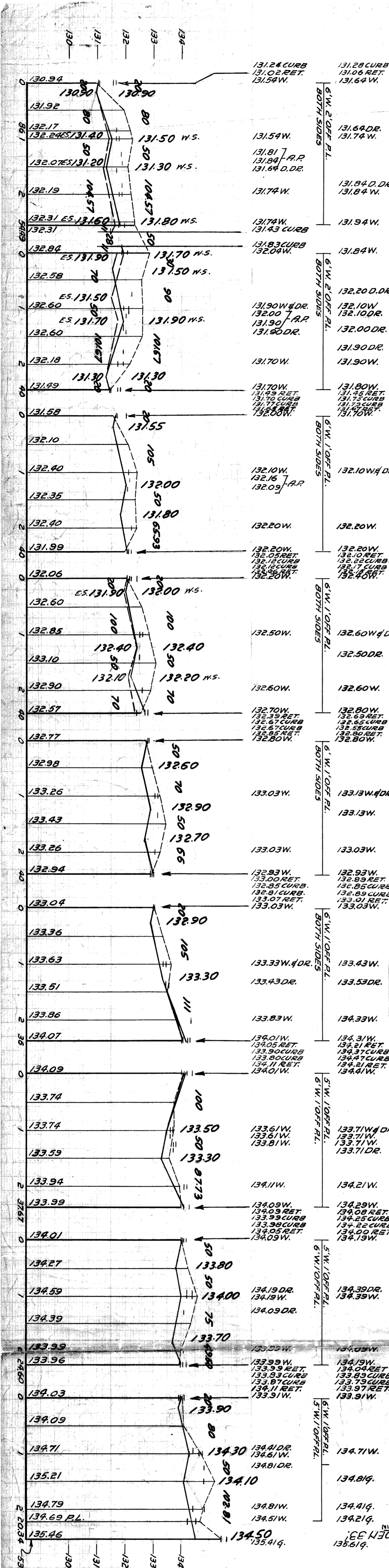
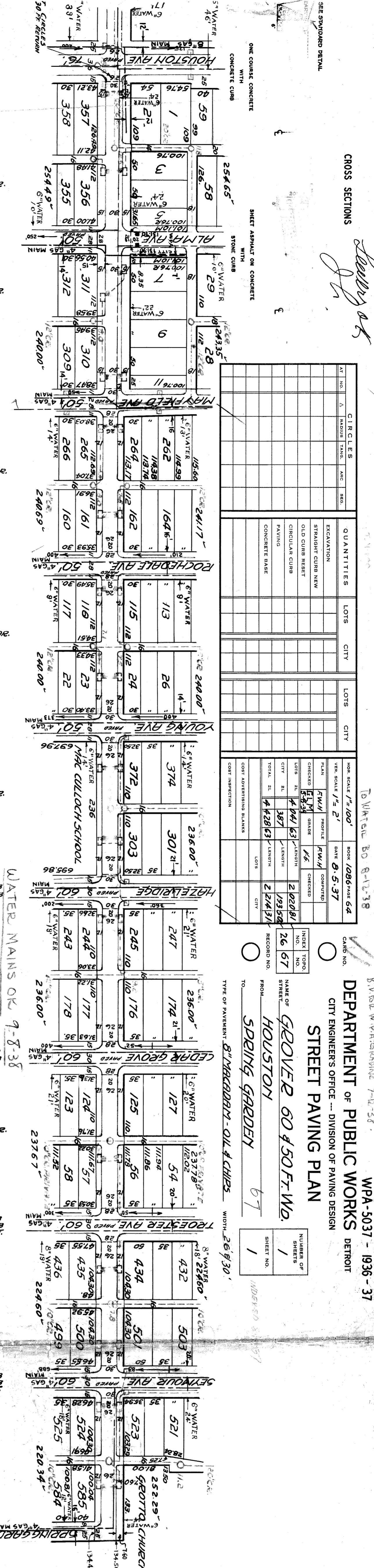
CROSS SECTIONS

AT	NO.	A	CIRCLES	QUANTITIES	LOTS	CITY	LOTS	CITY
NO.	NO.	NO.	RADIUS	EXCAVATION	NO.	NO.	NO.	NO.
				STRAIGHT CURB NEW				
				OLD CURB RESET				
				CIRCULAR CURB				
				PAVING				
				CONCRETE BASE				

PLAN	PROFILE	DATE	BOOK	PAGE
1/28/34	1/28/34	8-5-37	1086	64

INDEX	TOTAL	RECORD
NO.	NO.	NO.
26	67	67

WPA-5037 - 1936 - 37
 DETROIT
 DEPARTMENT OF PUBLIC WORKS
 CITY ENGINEERS' OFFICE - DIVISION OF PAVING DESIGN
 STREET PAVING PLAN
 GROVER 60 & 50 FT. WD.
 HOUSTON
 SPRING GARDEN 67
 FROM SPRING GARDEN - OIL & CHIPS
 TYPE OF PAVEMENT: 8" MAGADAN - OIL & CHIPS
 WIDTH: 26' 9" 30"



DESIGNED BY *William H. ...* APPROVED
 DRAWN BY *...*
 TRACED BY *...*
 CHECKED BY *...* ENGINEER

EXISTING POOLS & BASINS.
 NEW

BENCH MARKS:
 B.M. #66204 - VERT. NAIL 5' SIDE 36" ELM. S.E. COR. 132.748
 B.M. #11627 & HOUSTON 132.748
 B.M. #11627 ON HYD. - S.W. COR. ALMA & GROVER. 135.04
 B.M. #11627 ON HYD. - N.W. COR. ROCKDALE & GROVER. 135.82
 B.M. #11627 ON HYD. - H.E. COR. HAZEL RIDGE & GROVER. 136.09
 B.M. #11627 ON HYD. - N.E. COR. CEDAR GROVE & GROVER. 136.06
 B.M. #11627 ON HYD. - TROESTER & GROVER. 137.25
 B.M. #11627 ON HYD. - S.E. COR. SPRING GARDEN & GROVER. 137.35
 B.M. #11627 ON HYD. - E. SIDE GROTTO, 100' FROM GROVER. 139.40
 B.M. #11627 ON S. END OF 1ST. STEP TO RIGHT OFF & BELOW 1852 DATE STONE "GROTTO CHURCH" AT 139.72
 GROTTO CHURCH (RECORDED 139.754)

DRAINAGE COMPLETED
 PAVING COMPLETED 11/28/37

INSTALLED 12-18-37

94335