

**STREET PAVING PLAN  
CITY OF DETROIT**

DEPARTMENT OF PUBLIC WORKS - CITY ENGINEERS OFFICE

NAME OF STREET **GROVE**

FROM **EPL SUSSEX**

TO **WPL LAUDER**

TYPE OF PAYMENT **8 & 8 ONE COURSE CONCRETE-INTERGRAL CURB**  
8" UNIFORM AT STREET INTERSECTION EXCEPT AS NOTED

SHEET **2**  
OF **2**  
SHEETS

FORCED CC 7-18-55  
BENCH MARKS  
ELEV.  
181.410  
182.03  
186.02  
186.91  
186.67  
187.69

NOTES:  
FOR SYMBOLS @ ETC. SEE STD. DETAIL DRAWG C-327  
FOR HORIZONTAL CONTROL BY EXISTING RETURNS:

DRAINAGE ONLY

DATE	REVISIONS
2-9-58	OLD MAP
SUPPLEMENTARY DETAILS	
C-325	C-324
C-326A	C-385
C-327	C-386
C-390	C-387
	C-373
	C-379
	C-374
	C-178

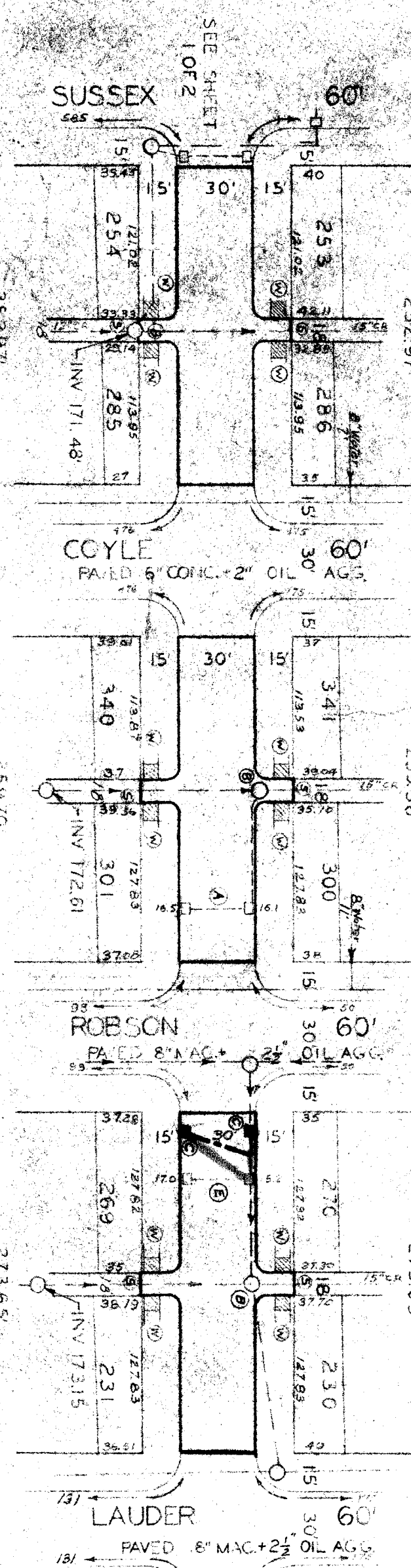
BEFORE STARTING CONSTRUCTION CONTRACTOR MUST CHECK WITH UTILITIES FOR LOCATIONS OF EXISTING STRUCTURES WHETHER OR NOT INDICATED ON PLANS.	
SCALE	1" = 100'
STREET WIDTH	1" = 50'
VERTICAL	1" = 2'
DRAINAGE COMPLETED	11-18-59
PAVING COMPLETED	

QUANTITIES		ESTIMATED	
EXCAVATION	CU YDS.	LOTS	CITY
NEW CURB	LN. FT.		
PAVING	SQ. YDS.		
TEST CORES	SQ. FT.		
SIDEWALK			
MANHOLES	ADJUST		
BASINS	ADJUST		
SEWER-12"	ADJUST		

PETITION NO.	FORCED C.C.	DATE	7-18-55
ASSIGNMENT NO.	325-CP-4	GROUP NO.	
BOOK NO.	1790 Pg. 29	LEVEL DATE	1-10-56
DATE OF DRAWG.	7-22-57	LENGTH	57.2
		CITY 2L	
		LENGTH	
		DATE	

MADE BY	CHARE	CHECKED BY	B.T.T.
PROFILE	CHARE		
ESTIMATE			
SEWER APPROVED			
FINAL CHECK			
APPROVED			

INDEX NO.	66
TOP NO.	85
INDEXED	



0+00	181.45 CUTTER	181.67
	181.29 CUTTER	181.43
	182.43 W	181.37 W
+50	182.38 W	182.70 W
+100	182.67 W	182.96 W
+11	182.81 WSD	183.08 WSD
+21	182.97 W	183.19 W
+31	182.74 SMH	183.35 W
+45	182.92 WSD	183.32 W
+50	182.85 W	183.45 W
2+00	183.30 W	183.45 W
+52.97	183.53 W	184.00 W
	182.63 CUTTER	183.22
	182.94 CUTTER	183.08
	182.90 CUTTER	183.09
0+00	183.13 CUTTER	183.22
	183.61 W	183.85 W
+50	183.46 W	183.61 W
+100	183.45 WSD	183.41 WSD
+13.3	183.51 W	183.41 W
+44	183.41 WSD	183.23 WSD
+50	183.39 W	183.22 W
2+00	183.36 W	183.18 W
+76	2-12"X18"	Y CBS
+50	183.29 W	183.11 W
+59.53	183.23 W	183.14 W
	182.77 W	182.16
	182.37 CUTTER	182.38
	182.52 CUTTER	182.38
0+00	182.36 CUTTER	182.22
	183.01 W	183.20 W
+50	183.16 W	183.24 W
+76	2-12"X18"	Y CBS
+100	183.24 W	183.21 W
+13.3	183.30 WSD	183.54 WSD
+44	183.40 W	183.54 W
+50	183.45 W	183.53 W
+59.53	183.42 WSD	183.54 WSD
2+00	183.50 W	183.76 W
+50	183.78 W	183.98 W
+73.65	183.85 W	184.05 W
	183.06 CUTTER	183.12
	183.08 CUTTER	183.24

