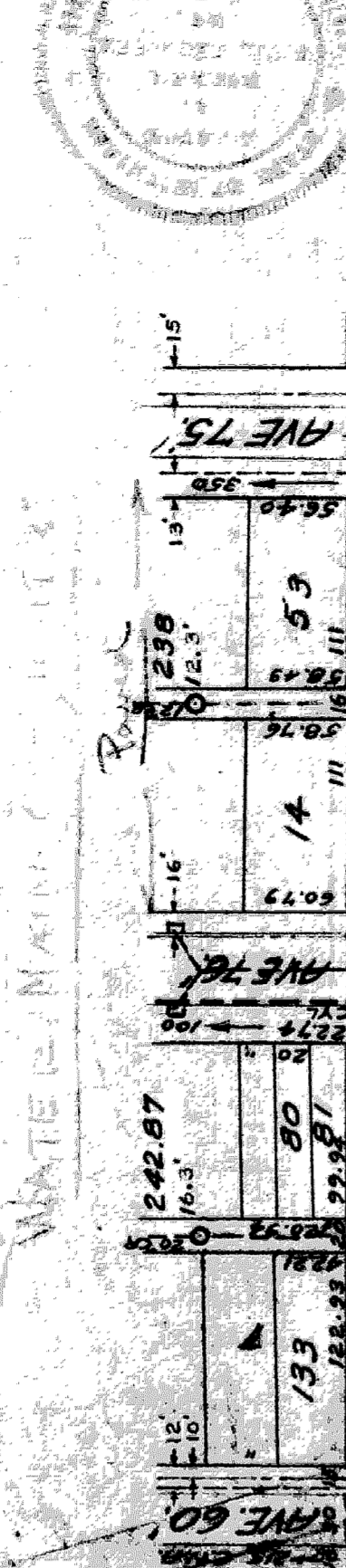


EXISTING POLES & BASINS
NEW

BENCH MARKS
B.M. #85-103-BORT SAME IN N. SIDE OF 48" ELM TREE - S.E. COR GREENFIELD
& MENICHOLES
B.M.-TOP HYD.-N.W. COR GREENFIELD & GROVE
B.M.-NAIL IN TRIPLE TREE - N.E. COR WHITCOMB & GROVE
B.M.-TWO NAILS IN TREE - S.W. COR SUSSEX & GROVE
B.M.-SPIKE IN TEL. POLE - N.E. COR COYLE & GROVE
B.M.-TOP HYD.-S.W. COR MARLOWE & GROVE
B.M.-TOP HYD.-S.E. COR HUBBELL & GROVE



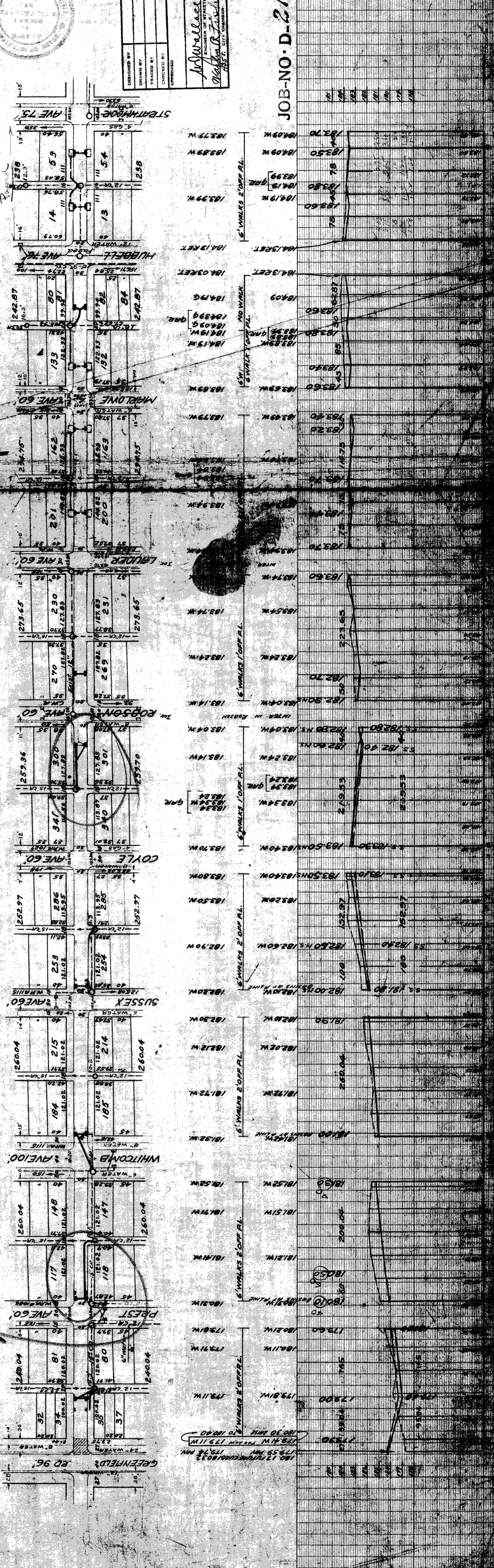
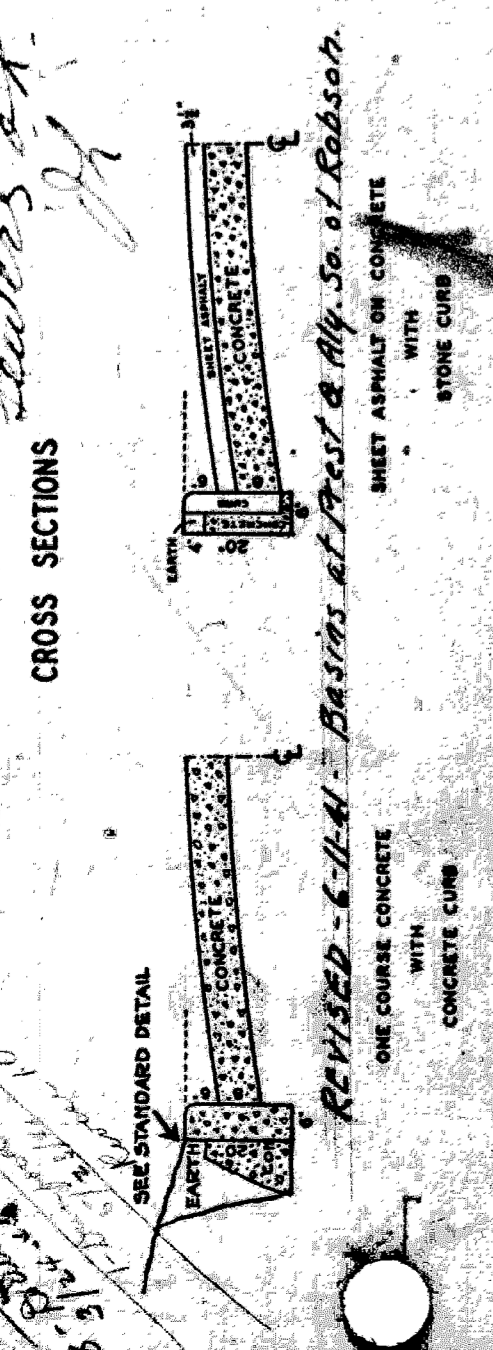
DEPARTMENT OF PUBLIC WORKS DETROIT
CITY ENGINEER'S OFFICE -- DIVISION OF PAVING DESIGN
STREET PAVING PLAN
NAME OF STREET **GROVE AVE 60 FT. WD.**
FROM **GREENFIELD - HUBBELL**

AT NO.	CIRCLER	QUANTITIES	LOTS	CITY	CITY	DATE	NO.
	A	EXCAVATION				2-9-1938	35
	B	STRAIGHT CURB NEW					
	C	OLD CURB RESET					
	D	CIRCULAR CURB					
	E	PAVING					
	F	CONCRETE BASE					

PLAN	GRADE	COMPUTED	NO.
J.G.	4	P.M.H.	9766

INDEX	TOPO	NO.
38	65	33

CURT	ADVERTISING	BLANKS	NO.
1			1



JOB NO. D-2109