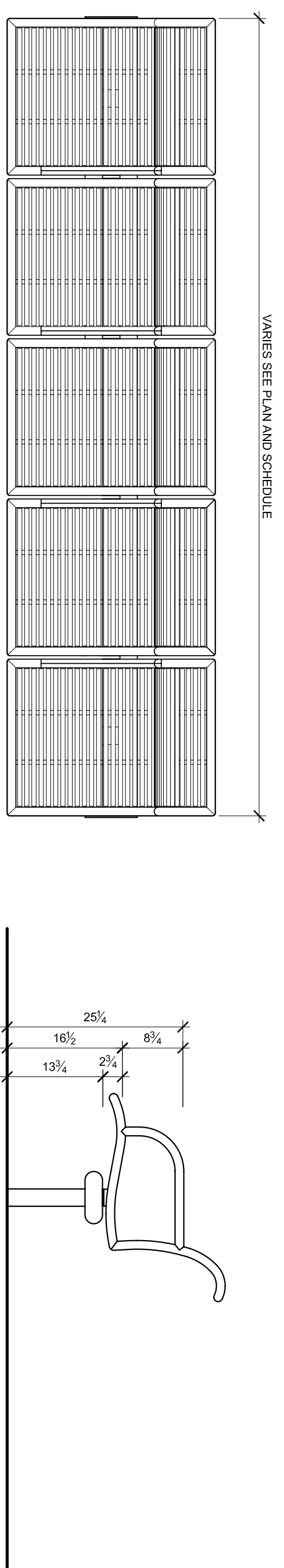
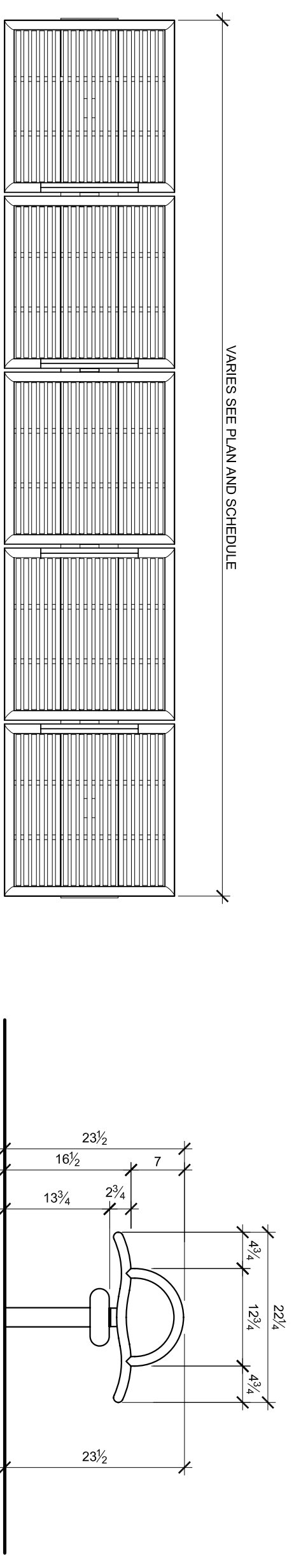


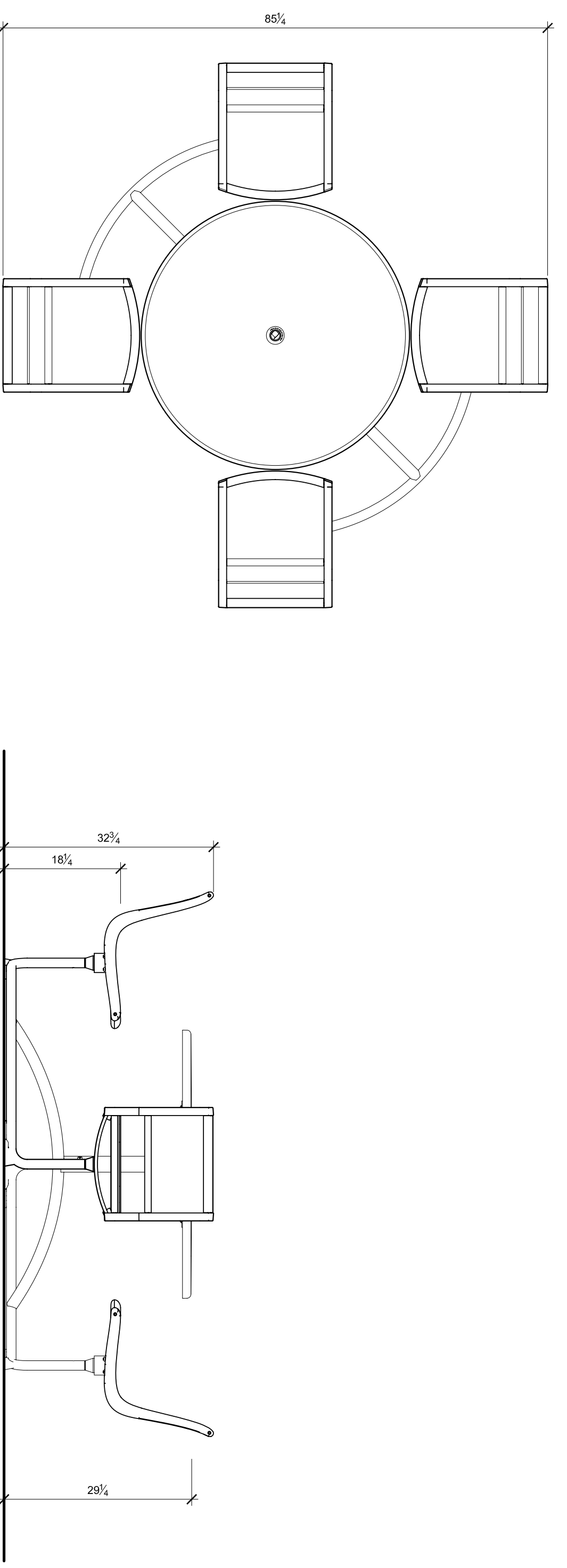
**01 PRESIDIO TRASH RECEPTACLE**  
SCALE: 1-1/2"=1'-0"



**02 PRESIDIO BENCH WITH BACK**  
SCALE: 1-1/2"=1'-0"



**03 PRESIDIO BENCH WITHOUT BACK**  
SCALE: 1-1/2"=1'-0"

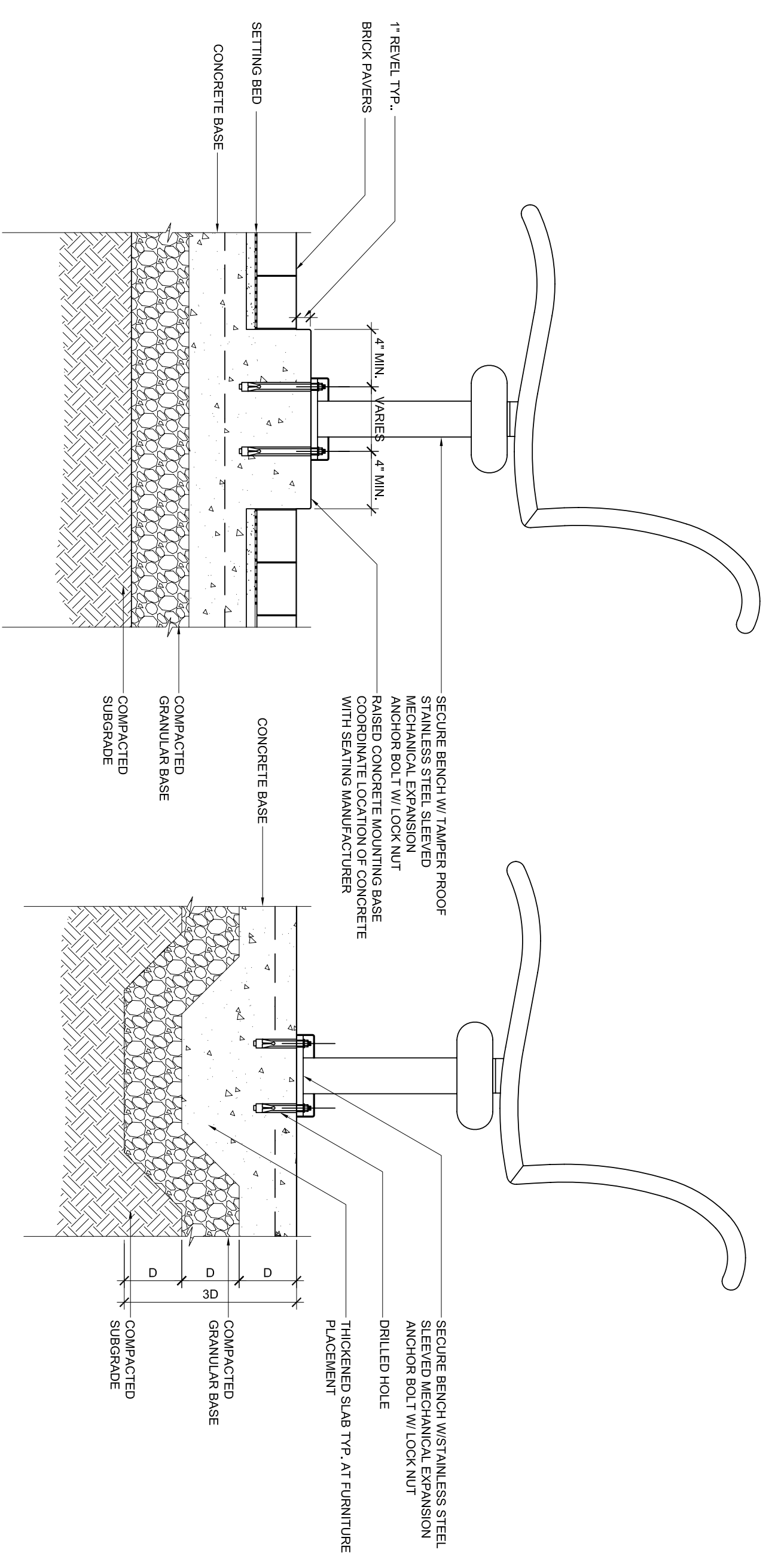


**05 MINGLE TABLE AND UMBRELLA SET**  
SCALE: 1-1/2"=1'-0"



**06 RING BICYCLE RACK**  
SCALE: 1-1/2"=1'-0"

FURNITURE SCHEDULE				
TAC	QTY.	MANUFACTURER	REMARKS	DETAIL
P-1TB	9	LANDSCAPE FORMS PRESIDIO	36" W X 48" H - PRESIDIO LITTER RECEPTACLE - SIDE	LOCKABLE 01 / AS 9.1
P-201	1	LANDSCAPE FORMS PRESIDIO	3 SEAT UNIT	W/ ANCHETS 02 / AS 9.1
P-206	1	LANDSCAPE FORMS PRESIDIO	5 SEAT UNIT	W/ ANCHETS 02 / AS 9.1
P-206	4	LANDSCAPE FORMS PRESIDIO	R SEAT UNIT	W/ ANCHETS 02 / AS 9.1
P-207	2	LANDSCAPE FORMS PRESIDIO	7 SEAT UNIT	W/ ANCHETS 02 / AS 9.1
P-209	1	LANDSCAPE FORMS PRESIDIO	9 SEAT UNIT	W/ ANCHETS 02 / AS 9.1
P-206	6	LANDSCAPE FORMS PRESIDIO	5 SEAT UNIT	W/ ANCHETS 03 / AS 9.1
M-201	2	LANDSCAPE FORMS RING	BACKED 2 SEAT UNIT	W/ METAL UMBRELLA 04 / AS 9.1
R-201	5	LANDSCAPE FORMS RING	BICYCLE RACK	EMERGED ANCHETING STAINLESS STEEL 04 / AS 9.1



**07 TYPICAL MOUNTING DETAIL**  
SCALE: 1-1/2"=1'-0"

**GENERAL NOTES**

1. THIS IS AN INSTRUMENT OF SERVICE ONLY AND IS THE PROPERTY OF MERZ & ASSOCIATES. IT IS TO BE RETURNED TO THE FIRM UPON COMPLETION OF THE PROJECT.
2. ALL DIMENSIONS ARE UNLESS OTHERWISE SPECIFIED.
3. MATERIALS AND METHODS SHALL BE AS SPECIFIED IN THE CONTRACT DOCUMENTS AND SHALL BE APPROVED BY THE ARCHITECT.
4. THE CONTRACTOR SHALL BE RESPONSIBLE FOR ALL SUBMITTALS AND SHALL SUBMIT THEM TO THE ARCHITECT FOR REVIEW AND APPROVAL.
5. THE CONTRACTOR SHALL BE RESPONSIBLE FOR OBTAINING ALL NECESSARY PERMITS AND APPROVALS FROM THE LOCAL AUTHORITIES.
6. THE CONTRACTOR SHALL BE RESPONSIBLE FOR OBTAINING ALL NECESSARY PERMITS AND APPROVALS FROM THE LOCAL AUTHORITIES.
7. ALL WORK SHALL BE DONE IN ACCORDANCE WITH THE CONTRACT DOCUMENTS AND SHALL BE APPROVED BY THE ARCHITECT.
8. THE CONTRACTOR SHALL BE RESPONSIBLE FOR OBTAINING ALL NECESSARY PERMITS AND APPROVALS FROM THE LOCAL AUTHORITIES.

**MERZ & ASSOCIATES**  
ARCHITECTS & URBAN DESIGNERS  
461 E. LUTHER, SUITE 311  
DENVER, CO 80202  
TEL: 303.733.1111  
WWW.MERZANDASSOCIATES.COM

**CAPITOL PARK IMPROVEMENT PROJECT**

Project No. 0705  
Job No. 0705  
Drawn: JLF/TMG  
Checked: CM/BM  
Approved: CM  
Date: 11/27/07  
Scale: Shop Drawing

Revised Log

NO.	DATE	DESCRIPTION
01	06.06.08	
02	07.22.08	
03	08.06.08	
04	08.20.08	
05	08.20.08	
06	08.20.08	
07	08.20.08	
08	08.20.08	
09	08.20.08	
10	08.20.08	