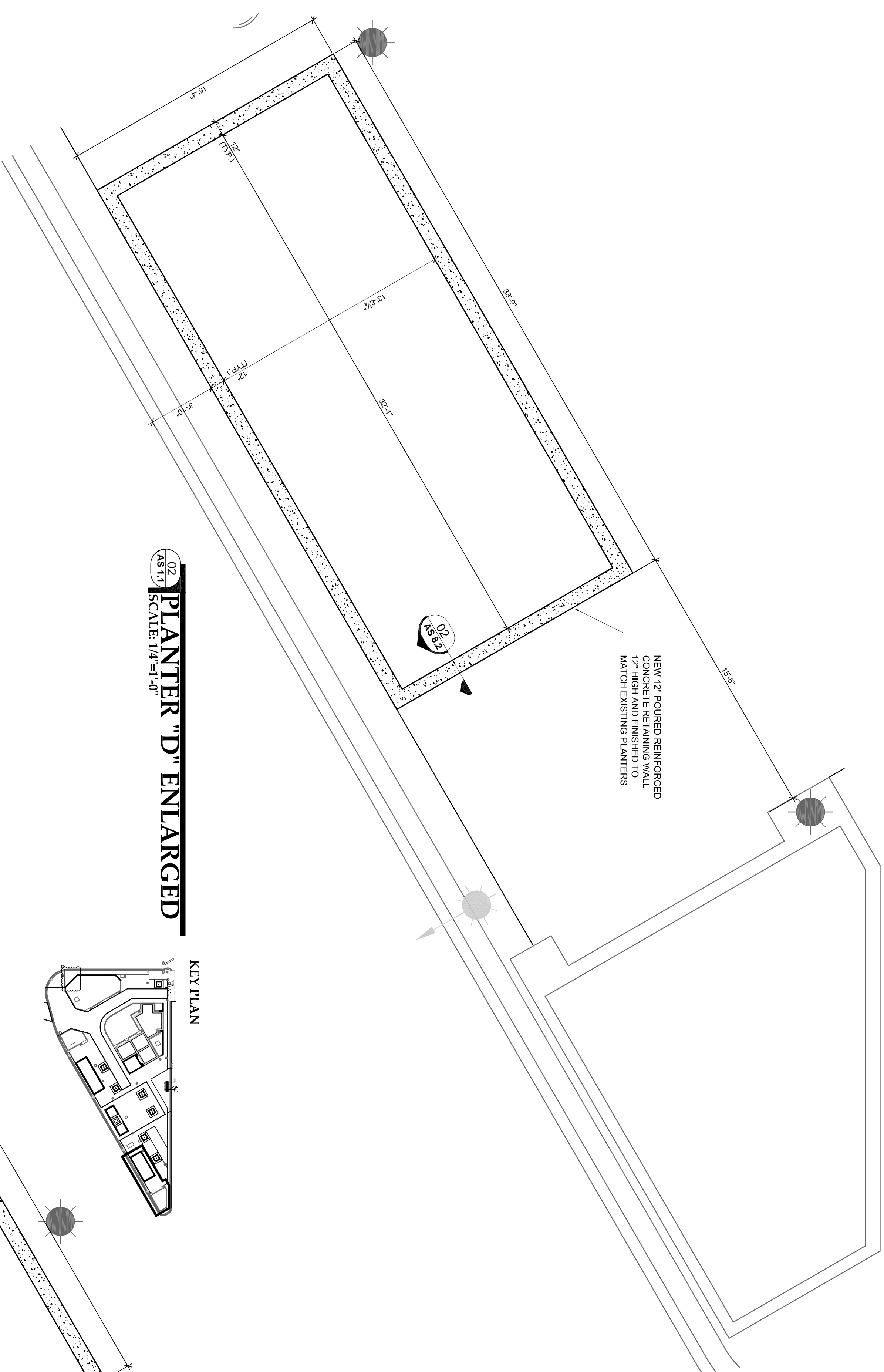
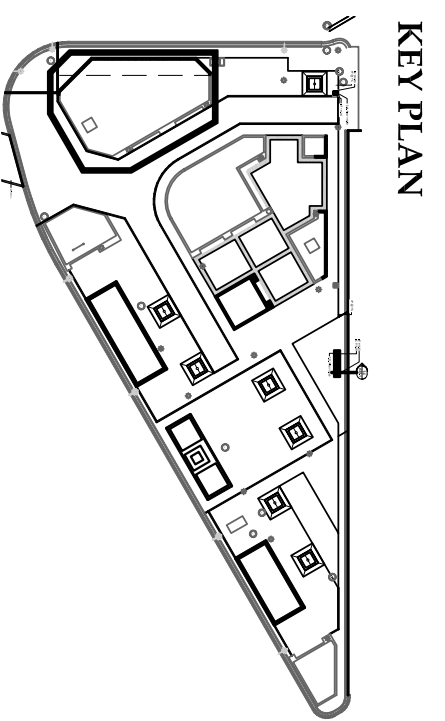
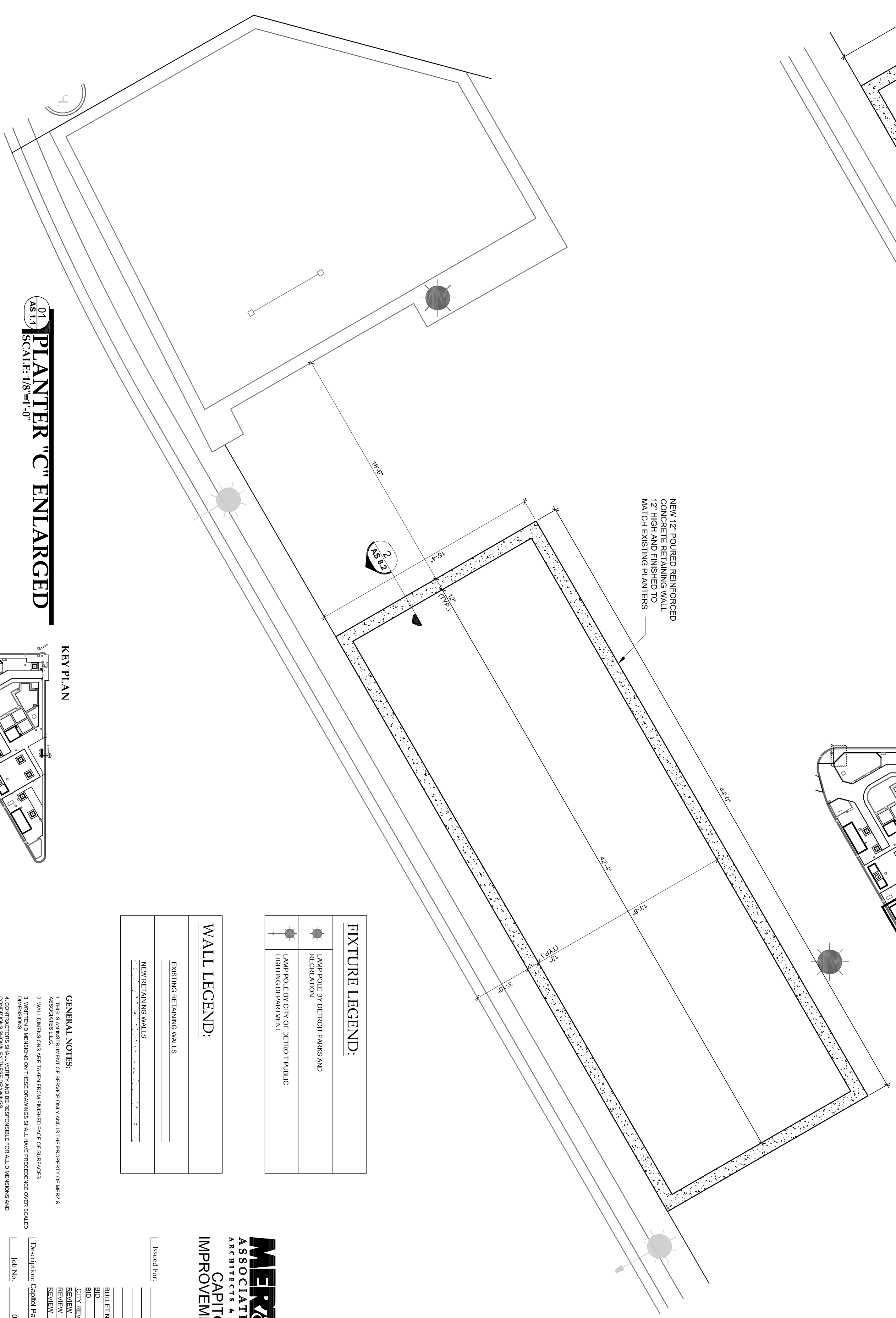
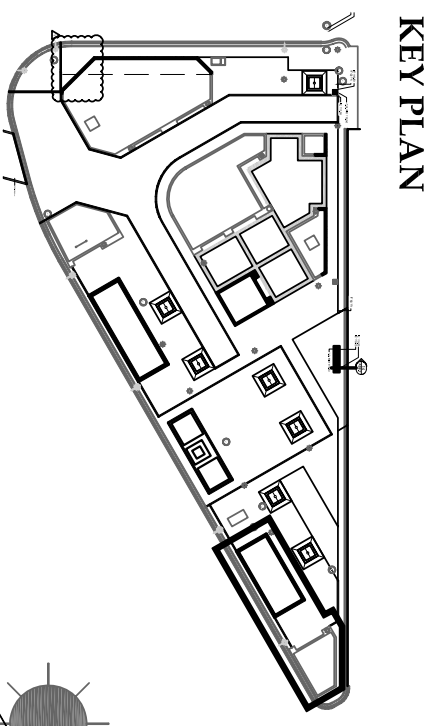


03 PLANTER "B" ENLARGED
AS 13 SCALE: 1/4"=1'-0"



02 PLANTER "D" ENLARGED
AS 13 SCALE: 1/4"=1'-0"



01 PLANTER "C" ENLARGED
AS 13 SCALE: 1/8"=1'-0"

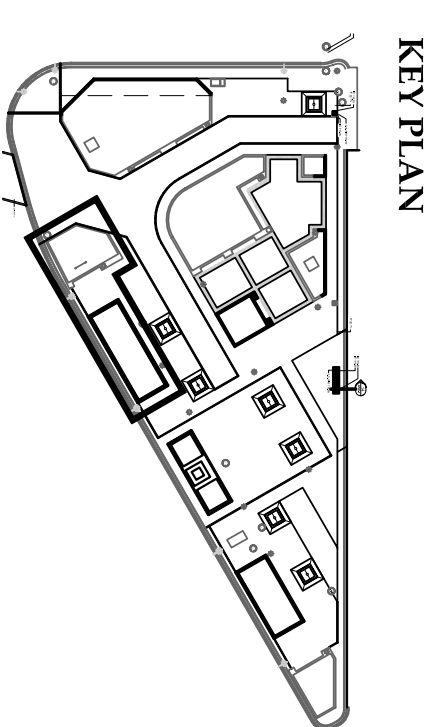


FIGURE LEGEND:

	LAMP POLE BY DETROIT PARKS AND RECREATION
	LAMP POLE BY CITY OF DETROIT PUBLIC LIGHTING DEPARTMENT

WALL LEGEND:

	EXISTING RETAINING WALLS
	NEW RETAINING WALLS

GENERAL NOTES:

1. ALL DIMENSIONS ARE TAKEN FROM FINISHED FACE OF SURFACES UNLESS OTHERWISE NOTED.
2. WALL DIMENSIONS AND TOLERANCES SHALL BE AS SHOWN ON THESE DRAWINGS UNLESS OTHERWISE NOTED.
3. ALL WORK SHALL BE IN ACCORDANCE WITH THE CITY OF DETROIT STANDARD SPECIFICATIONS FOR CONSTRUCTION.
4. ALL MATERIALS SHALL BE APPROVED BY THE CITY OF DETROIT.
5. ALL MATERIALS SHALL BE INSTALLED IN ACCORDANCE WITH THE CITY OF DETROIT STANDARD SPECIFICATIONS FOR CONSTRUCTION.
6. ALL CONNECTIONS SHALL BE MADE IN ACCORDANCE WITH THE CITY OF DETROIT STANDARD SPECIFICATIONS FOR CONSTRUCTION.
7. ALL EXISTING CONDITIONS ARE TO BE MAINTAINED UNLESS OTHERWISE NOTED.
8. ALL WORK SHALL BE COMPLETED WITHIN THE SPECIFIED TIME FRAME.
9. ALL WORK SHALL BE COMPLETED WITHIN THE SPECIFIED BUDGET.
10. ALL WORK SHALL BE COMPLETED WITHIN THE SPECIFIED QUALITY STANDARDS.

MERS ASSOCIATES
ARCHITECTS & URBAN DESIGNERS
440 E. LAFAYETTE, SUITE 211
DETROIT, MI 48201
PH: 313.963.1111
WWW.MERSASSOCIATES.COM

CAPITOL PARK IMPROVEMENT PROJECT

Discipline: Capital Park Resurfacing & Improvements
Job No.: 0705
Date: 11/27/07
Scale: See Drawing

DATE	DESCRIPTION
08.28.09	BALLETINA
08.05.09	BLD
08.27.09	CONTRACT REVIEW
08.18.09	REVIEW
07.28.09	REVIEW

AS 2.2