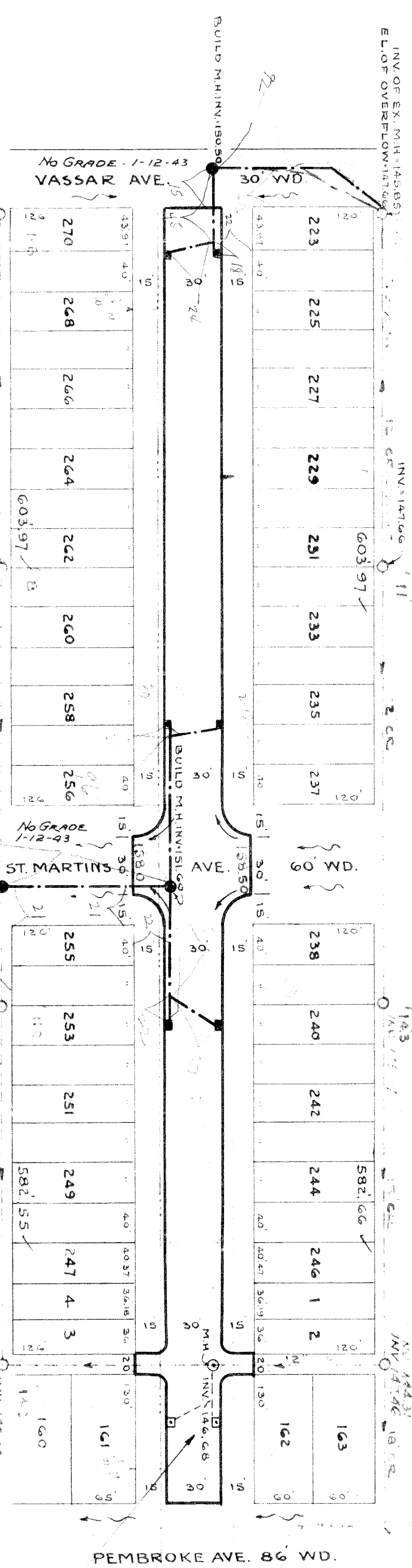


| | | | |
|------------------------|---------|-------------------------|------------|
| SEWER INDEXED | REVISED | ST. MARTINS TO PEMBROKE | 9-1-48 |
| JOB NO. | | PROGRESS | QUANTITIES |
| BLUE PRINT ISSUED FOR: | | START | FINISH |
| GRADE ONLY | | | |
| CATCH BASINS | | | |
| PAVING-CLASS: | | | |
| CONCRETE BASE | | | |
| DEPT. OF WATER SUPPLY | | | |
| GAS CO. | | | |
| HON. SCALE 1" = 20' | | BOOK 1373 | PAGE 58 |
| DATE 1-7-43 | | | |
| DESIGNED BY | | DRAWN BY | |
| R. R. R. | | S. J. ... | |
| CHECKED BY | | TRACED BY | |
| R. R. R. | | R. R. R. | |
| APPROVED | | ENGINEER OF STREETS | |
| ASST. CITY ENGINEER | | | |



| BENCH MARKS | ELEV. |
|---|--------|
| # 115202 VERT SPIKE W.S. 30' MAPLE TREE S.E. LAHSER | 160.66 |
| 400 FT. S. OF ST. MARTINS | 159.81 |
| SPIKE IN FENCE POST E. OF GREYDALE AT VASSAR | 159.27 |
| SPIKE IN 10" MAPLE 25 FT. N. OF VASSAR W.S. OF GREYDALE | 159.27 |
| ARROW ON HYD. N.E. COR. OF ST. MARTINS & GREYDALE | 161.50 |

FOR BASINS SEE SECTION NORTH.

REQUESTED BY MR. MOORE

DEPARTMENT OF PUBLIC WORKS
CITY ENGINEERS OFFICE ... DIVISION OF PAVING DESIGN
STREET PAVING PLAN
DETROIT

NAME OF STREET: GREYDALE AVE.
FROM: N.P.L. OF VASSAR AVE.
TO: S.P.L. OF PEMBROKE AVE.

APPROXIMATE 249-129 1-9-47

RECORD NO. 72 115

INDEX TO NO. 72 115

TYPE OF PAYMENT: ... WIDTH: 30'

NUMBERS OF SHEETS: 1
SHEET NO. 1

