

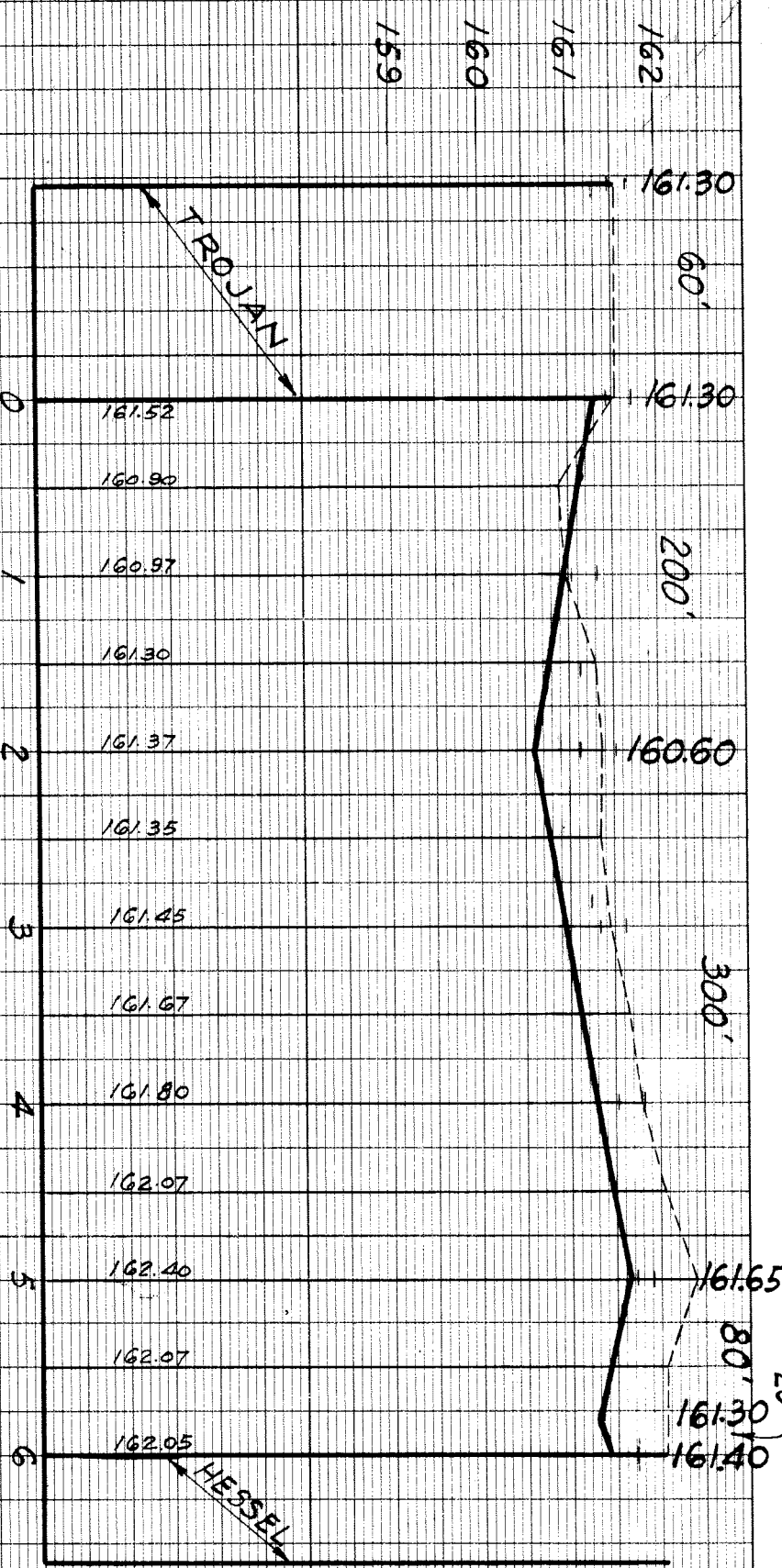
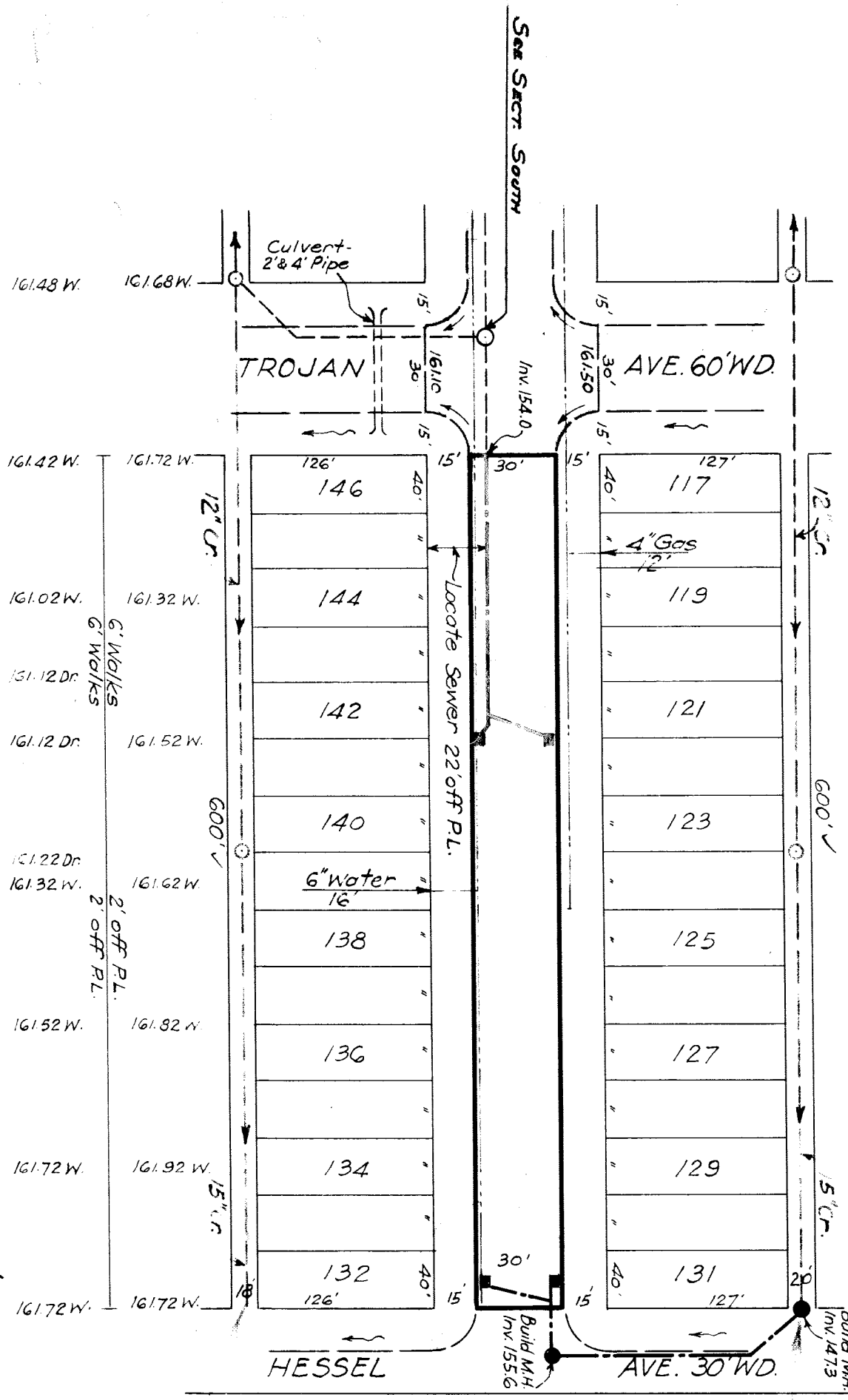
SEWER <i>at S. Lohser 240'</i>		JOB NO.		PROGRESS	
INDEXED	<i>11/13</i>	BLUE PRINT ISSUED FOR:	DATE	START	FINISH
REVISIONS		GRADE ONLY			
		CATCH BASINS			
		PAVING CLASS.			
		DEPT. OF WATER SUPPLY			
		GAS CO.			
QUANTITIES		EXCAVATION		LOTS	
		STRAIGHT CURB NEW			
		OLD CURB RESET			
		CIRCULAR CURB			
		PAVING			
		CONCRETE BASE			
NON. SCALE		1" = 100'		BOOK 1492 PAGE 13	
VER. SCALE	1" = 2'	DATE		Mar. 31, 1943.	
PLAN	LJK	PROFILE	LJK	COMPUTED	LJK
CHECKED	LJK	GRADE	R2	CHECKED	R3
LOTS	2L	1200.00	LENGTH	600.00	0.00
CITY	2L	0.00	LENGTH	0.00	0.00
TOTAL	2L	1200.00	LENGTH	600.00	0.00
COST ADVERTISING BLANKS		CITY		600.00	
COST INSPECTION		LOTS		CITY	
DESIGNED BY	L. J. Kotz	DRAWN BY	L. J. K.	CHECKED BY	R. R. R.
TRACED BY	L. J. K.	APPROVED BY	<i>J. J. Martin</i>	ENGINEER OF STREETS	
			<i>Martin R. Trojan</i>	ASSIST. CITY ENGINEER	

DEPARTMENT OF PUBLIC WORKS DETROIT
CITY ENGINEERS OFFICE - DIVISION OF PAVING DESIGN
STREET PAVING PLAN
GREYDALE AVE.

NAME OF STREET: N.P.L. OF TROJAN
FROM: S.P.L. OF HESSEL
TO: *D. Lohser*
TYPE OF PAVEMENT: *Concrete* WIDTH: 30'

CARD NO. INDEX NO. 72 TOPO NO. 115 RECORD NO.

NUMBERS OF SHEETS: 1 SHEET NO. 1



P.B.M. 115.203 E. side Lohser - 240' S. of Rembroke 160.94
Vertical Spike in W. side of 30' Maple Tree 160.34
B.M. Nail in Light Pole - NW. cor. Greydale & Rembroke 162.88
B.M. Hyd. at N.E. Corner Forgo & Greydale 162.88
B.M. Fig. 8 in Lot Nos. 128-129 in Walk on W. side 162.10
of Greydale 120' S. of Hessel
P.B.M. 115.102 S. side of Hessel - One foot W. of alley E. of Lohser. Brass Cap in concrete monument in handhole in sidewalk 162.21

ONE-FLOW SEWER

ONE-FLOW SEWER

