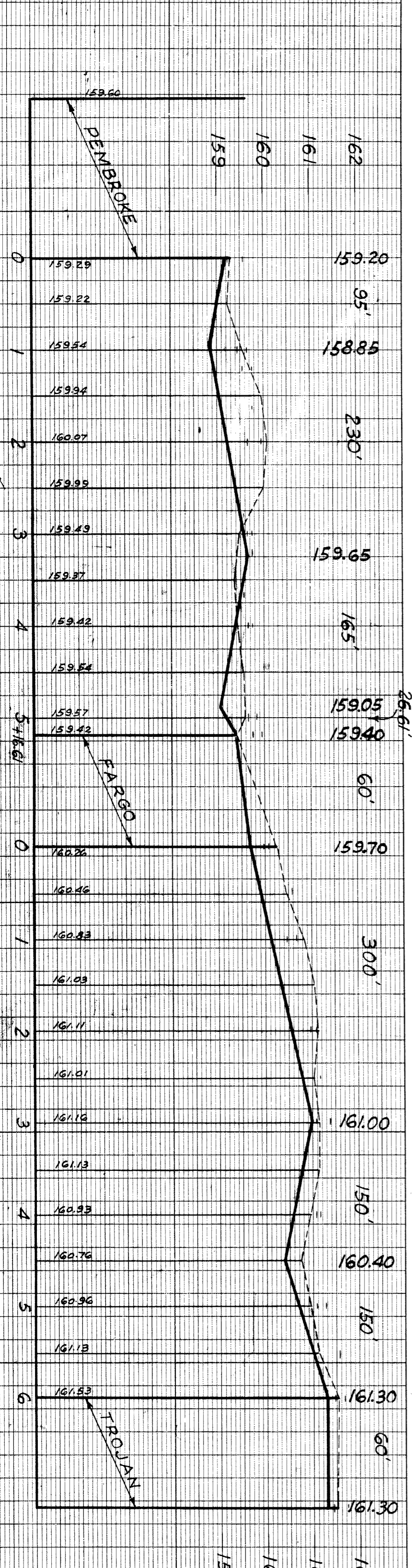
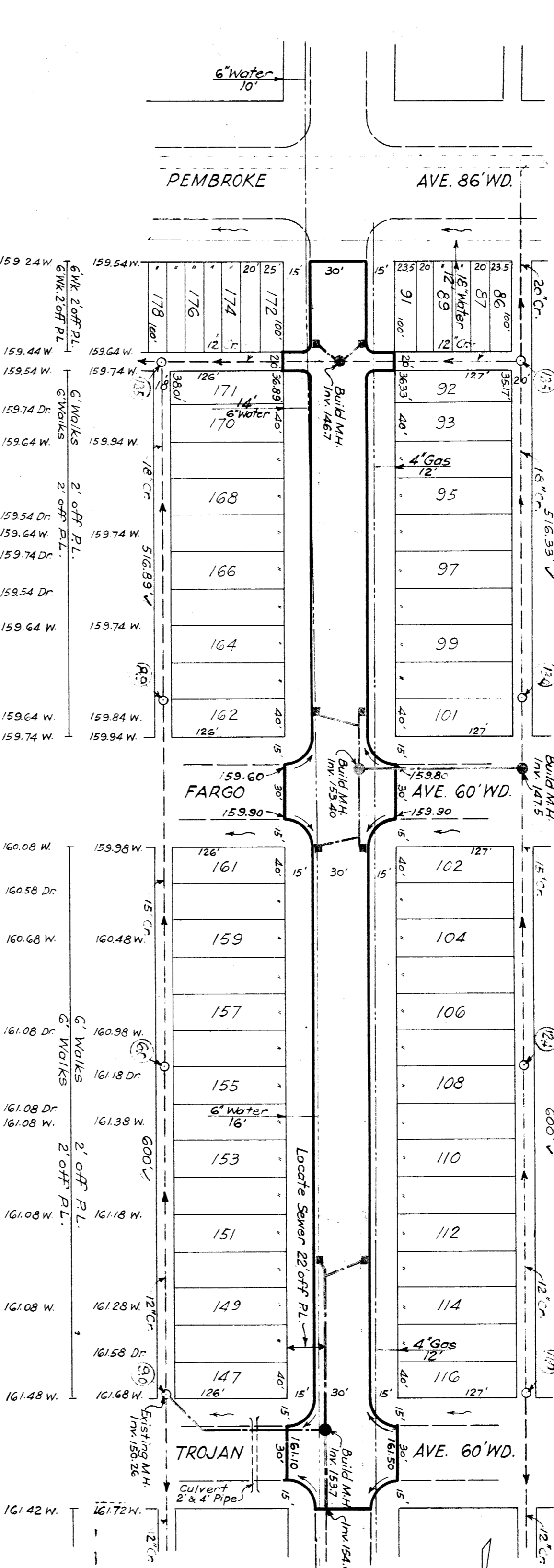


68 P. 1-25-40
 09/11/47
 E. J. Spach

SEWER INDEXED	JOB NO.	PROGRESS	QUANTITIES	LOTS	CITY	LOTS	CITY	NON. SCALE	1" = 100'	BOOK	1492	PAGE	13	DESIGNED BY	L. J. Kratz.
REVISIONS	BLUE PRINT ISSUED FOR:	DATE	EXCAVATION	VER. SCALE	1" = 2'	DATE	Mar. 31, 1943.	PLAN	L. J. K.	PROFILE	L. J. K.	COMPUTED	R. R. R.	TRACED BY	L. J. K.
CATCH BASINS	GRADE ONLY	START	STRAIGHT CURB NEW	CHECKED	L. J. K.	GRADE	R. R. R.	CHECKED	R. R. R.	CHECKED	R. R. R.	CHECKED	R. R. R.	CHECKED BY	R. R. R.
PAVING CLASS.	CATCH BASINS	FINISH	OLD CURB RESET	LOTS	21	21	1931.22	LENGTH	1096.61	LENGTH	140.00	LENGTH	1236.61	APPROVED	<i>[Signature]</i>
DEPT. OF WATER SUPPLY	PAYING CLASS.		CIRCULAR CURB	CITY	21	21	280.00	LENGTH	140.00	LENGTH	140.00	LENGTH	1236.61	ENGINEER OF STREETS	<i>[Signature]</i>
GAS CO.			CONCRETE BASE	CITY	21	21	2473.22	LENGTH	1236.61	LENGTH	1236.61	LENGTH	1236.61	ASSIST. CITY ENGINEER	<i>[Signature]</i>
				CITY	21	21		LENGTH	1236.61	LENGTH	1236.61	LENGTH	1236.61		



CARD NO. INDEX TOPO NO.

NAME OF STREET: GREYDALE AVE.

FROM: N.P.L. OF PEMBROKE

TO: N.P.L. OF TROJAN

TYPE OF PAVEMENT: DRAINAGE

WIDTH: 30'

RECORD NO. INDEX NO. 72

NUMBERS OF SHEETS: 1

SHEET NO. 1

P.B.M. 115.203 E. side Lahser - 240' S. of Pembroke - Vertical spike in W. side of 30' Maple Tree - 16094
 B.M. Nail in Light Pole - NW corner Greydale & Pembroke - 16034
 B.M. Hyd. of N.E. corner Fargo & Greydale - 16288
 B.M. Fig. 8 in Lot Nos. 128129 in Walk on W. side of Greydale 120' S. of Hessel - 16210
 P.B.M. 115.102 S. side of Hessel - One foot W. of alley E. of Lahser. Brass cap in conc. monument in handhole in sidewalk - 16221

DATE: _____
 PAVING DISTRICT: _____