

8117 10/1/18

SEWER REVISIONS			
C-324	C-380	C-733	
C-325	C-324	C-739	
C-328 A	C-385	C-739 A	
C-327	C-386	C-738 B	

NOTE:
BEFORE STARTING CONSTRUCTION CONTRACTOR MUST CHECK WITH UTILITIES FOR LOCATIONS OF EXISTING STRUCTURES WHETHER OR NOT INDICATED ON PLANS.

PLAN SCALE DISTORTED
LOTS & ALLEYS 1" = 60'
STREET WIDTHS 1" = 60'

DRAINAGE COMPLETED
PAVING COMPLETED

TO LASHER PUBLIC SEWER

QUANTITIES	ESTIMATED	FINAL
EXCAVATION CU. YDS.	LOTS	CITY
NEW CURB LIN. FT.	LOTS	CITY
PAVING SQ. YDS.	LOTS	CITY
SIDEWALK SQ. FT.	LOTS	CITY
MANHOLES CONSTRUCT	LOTS	CITY
MANHOLES ADJUST	LOTS	CITY
SEWERS 12" LIN. FT.	LOTS	CITY
SEWERS 15" LIN. FT.	LOTS	CITY

Job Scale 1" = 60'	Book 1668	Page 10
Plan Scale 1" = 2'	Date Drawn 11-17-47	
City	Length	Width
155430	777.15	
155430	777.15	

DESIGNED BY L.G. VANTUYL
DRAWN BY W.I. Catheart
CHECKED BY S. R. Brown
APPROVED BY *[Signature]*
ENGINEER OF STREETS
CITY ENGINEER

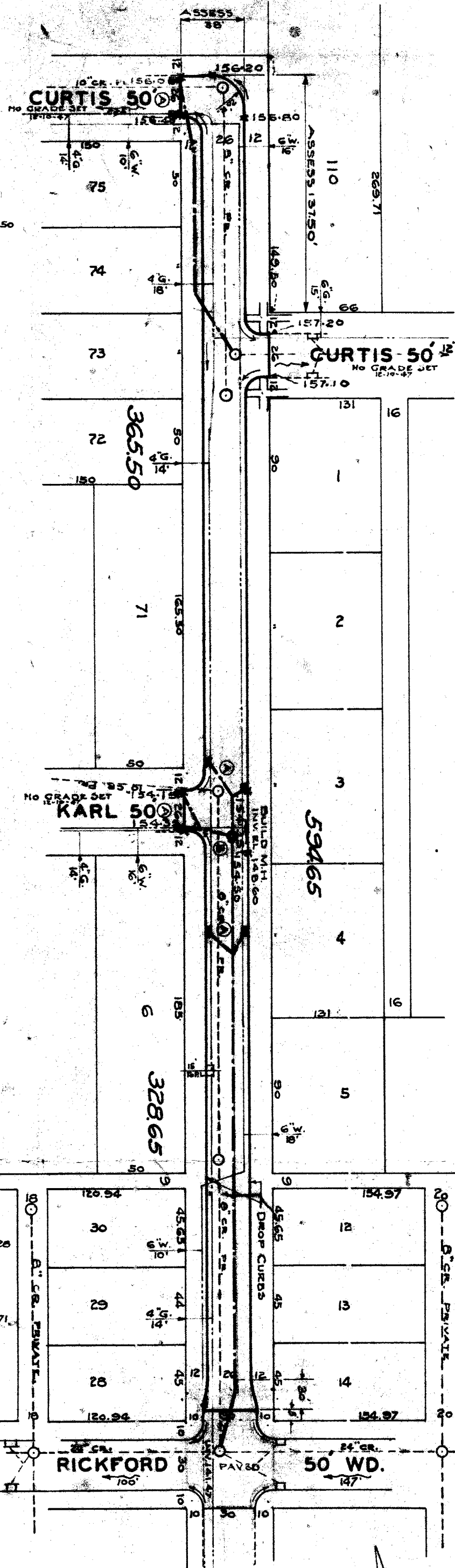
CARD NO. 72 114
INDEX TOPO NO. 114
RECORD NO. 72 114

DEPARTMENT OF PUBLIC WORKS
CITY ENGINEERS OFFICE - DIVISION OF PAVING DESIGN
STREET PAVING PLAN
GREYDALE

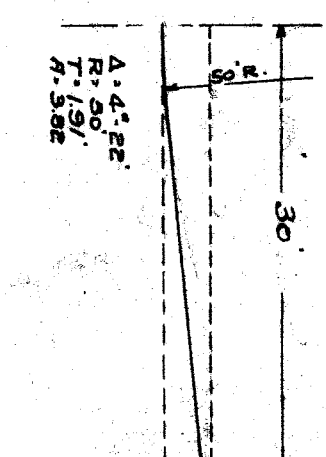
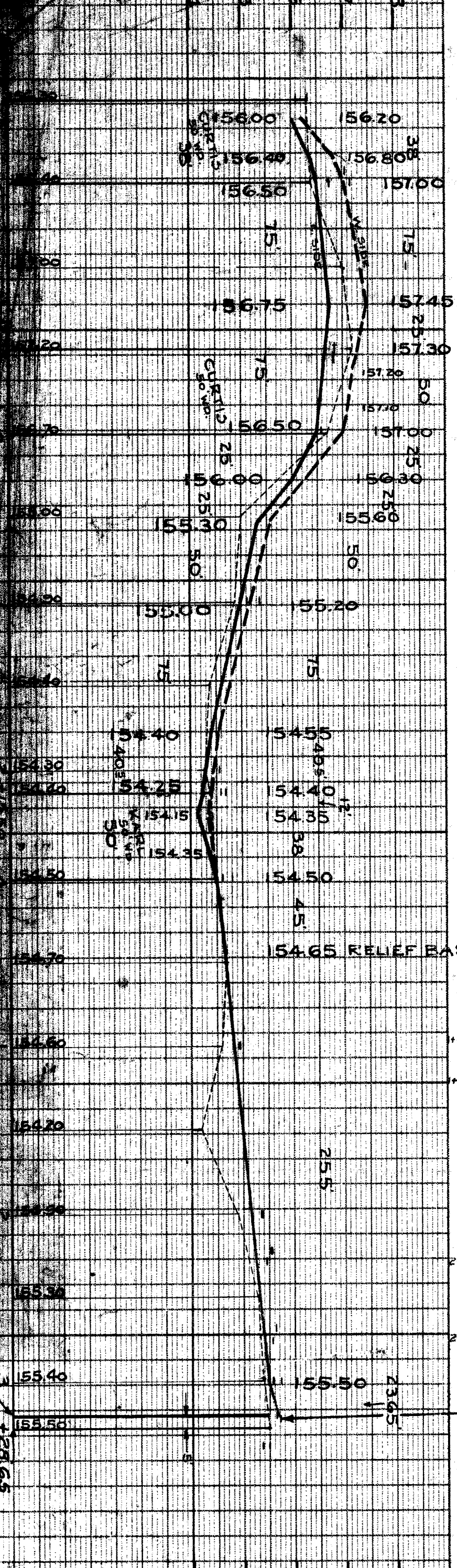
12' N. OF S.R.L. OF CURTIS
5' S. OF S.R.L. OF PICKFORD

ASSIGN NO. 265-14
SHEET NO. 1 OF 1 SHEETS

DATE 11/18/47



156.10 156.31
156.74 157.07 Dr.
157.16
158.24 Dr. 0+50
158.05
156.87 Dr. 156.84
156.59 End of P.Walks
157.66
155.11 155.38
154.45 154.59
154.60 154.68
154.62 154.80
154.96 154.97
155.45
155.56 Dr. 2+70
155.57 155.73
155.64 155.72
155.50 155.36



NOTES FOR DRAINAGE
 (A) CONSTRUCT 8 STD. 18" DIA. BASINS COMPLETE & CONNECT TO EXISTING OUTLETS AS SHOWN.
 (B) CONSTRUCT 1 STD. MANHOLE COMPLETE.

DENCH MARKS
 P.M. 114-251 A. N.W. Cor. Greydale + Curtis
 B.M. Spike in Pole N.W. Cor. Greydale + Karl
 B.M. Top of Hyd. 5/2 Cor. Greydale + Rickford
 B.M. Top of Hyd. N.W. Cor. Greydale + Margonette
 P.M. 114-251 B. E. Lasher Rd + Curtis

156.00 156.20
156.40 156.80
156.50 157.00
156.75 157.45
157.30
157.20
157.00
156.50
156.30
155.60
155.30
155.00
155.20
154.40
154.25
154.15
154.35
154.50
154.75
154.90
154.80
154.60
154.20
154.50
154.30
154.65
155.36
155.35
155.55 Dr. 2+26
155.62 Dr. 2+71
155.56
155.57 155.73
155.64 155.72
155.50 155.36