

CITY ENGINEERS OFFICE - DIVISION OF PAVING DESIGN
STREET PAVING PLAN
GREENVIEW

FROM 40'S. OF N.P.L. OF 7 MILE RD.
 TO N.P.L. OF VASSAR

TYPE OF PAVEMENT: 8.5" ONE COURSE CONCRETE INTEGRAL CURBWITH 30' & 36' UNIFORM SLAB AT STREET INTERSECTIONS
 FORCED PAVING C.C. RE. S. 9-17-98

BENCH MARKS
 PLBM #105-2504 NE COR. SEVEN MILE & AVON 175.667
 ARROW ON HYD. NW COR. GREENVIEW & CAMBRIDGE 180.21
 ARROW ON HYD. NW COR. GREENVIEW & VASSAR 181.72

ELEVATIONS

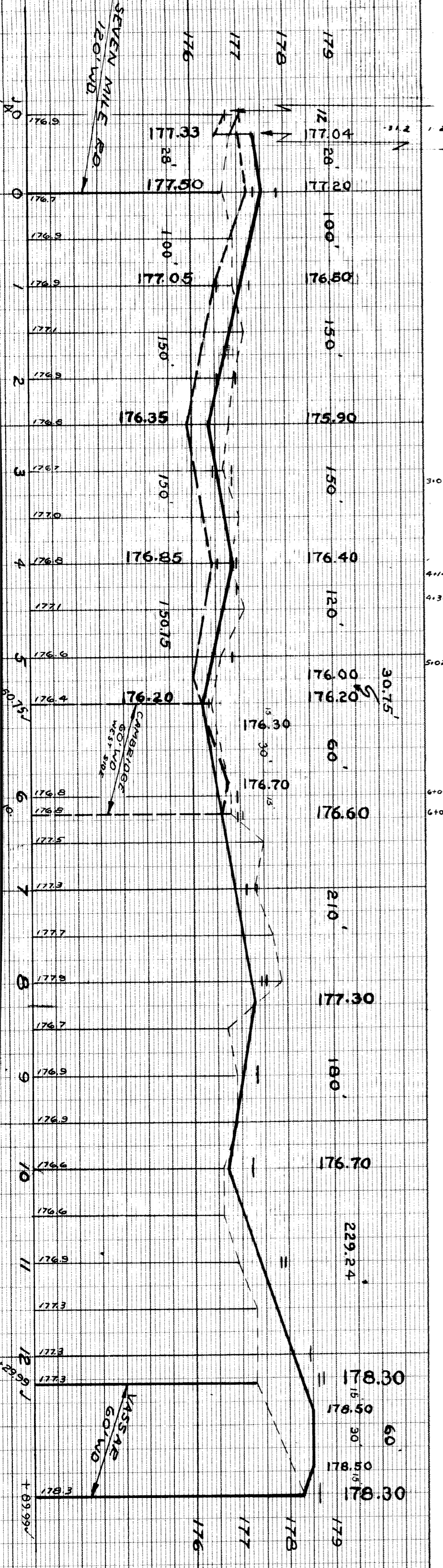
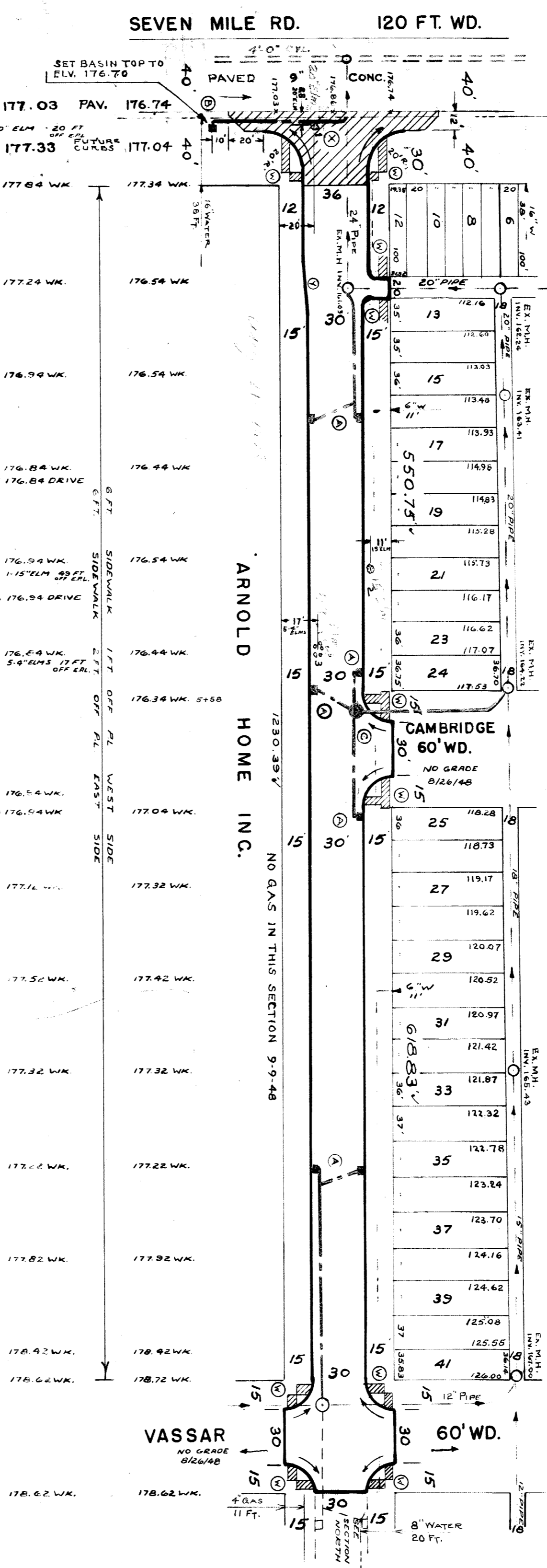
SEWER	OLD MAP	11-9-38
REVISIONS		
SUPPLEMENTARY DETAILS		
DRAWING NO.	C-327	C-739
C-327	C-327	C-739
C-325	C-390	C-739A
C-324	C-587	C-739B
C-324	C-733	C-938

NOTE:
 BEFORE STARTING CONSTRUCTION CONTRACTOR MUST CHECK WITH UTILITIES FOR LOCATIONS OF EXISTING STRUCTURES WHETHER OR NOT INDICATED ON PLANS.
 PLAN SCALE DISTORTED
 LOTS & ALLEYS 1"=100'
 STREET WIDTHS 1"=50'
 DRAINAGE COMPLETED
 PAVING COMPLETED

QUANTITIES	ESTIMATED	FINAL
EXCAVATION CU. YDS.	LOTS	CITY
NEW CURB LIN. FT.	LOTS	CITY
PAVING SQ. YDS.		
SIDEWALK SQ. FT.		
MANHOLES CONSTRUCT		
ADJUST		
SEWERS 12" LIN. FT.		
SEWERS 18" LIN. FT.		

HOR. SCALE 1"=100'	BOOK 1708	PAGE 1
VER. SCALE 1"=2'	LEV. AUG. 23-29-98	DATE AUG. 26-1998
PLAN	RB	PROFILE
CHECKED	S.D.	GRADE
LOT#	35	LENGTH
CITY	21	LENGTH
TOTAL	3971.77	LENGTH
		1785.89
		200.00
		1985.89

DESIGNED BY
 DRAWN BY R.H. Blumberg
 TRACED BY
 CHECKED BY
 APPROVED
 ENGINEER OF STREETS
 CITY ENGINEER



SEVEN MILE RD. 120 FT. WD.
 SET BASIN TOP TO ELV. 176.70
 PAVED CONC.
 177.03 PAV. 176.74
 177.33 177.04
 177.84 WK 177.34 WK
 177.24 WK 176.54 WK
 176.84 WK 176.54 WK
 176.84 WK 3107 176.84 DRIVE
 176.84 WK 414 1-15" ELM 39 FT. OFF ERL
 176.84 WK 436 176.84 DRIVE
 176.84 WK 502 5-9" ELM 5 17 FT. OFF ERL
 176.84 WK 609 176.84 WK
 176.84 WK 6108 176.84 WK
 177.16 WK
 177.32 WK
 177.32 WK
 177.32 WK
 177.22 WK
 177.22 WK
 177.82 WK
 177.82 WK
 178.42 WK
 178.62 WK
 178.62 WK
 178.62 WK

ARNOLD HOME INC.
 NO GAS IN THIS SECTION 9-9-48

CAMBRIDGE 60' WD.
 NO GRADE 8/26/48

VASSAR 60' WD.
 NO GRADE 8/26/48

8" WATER 20 FT.

