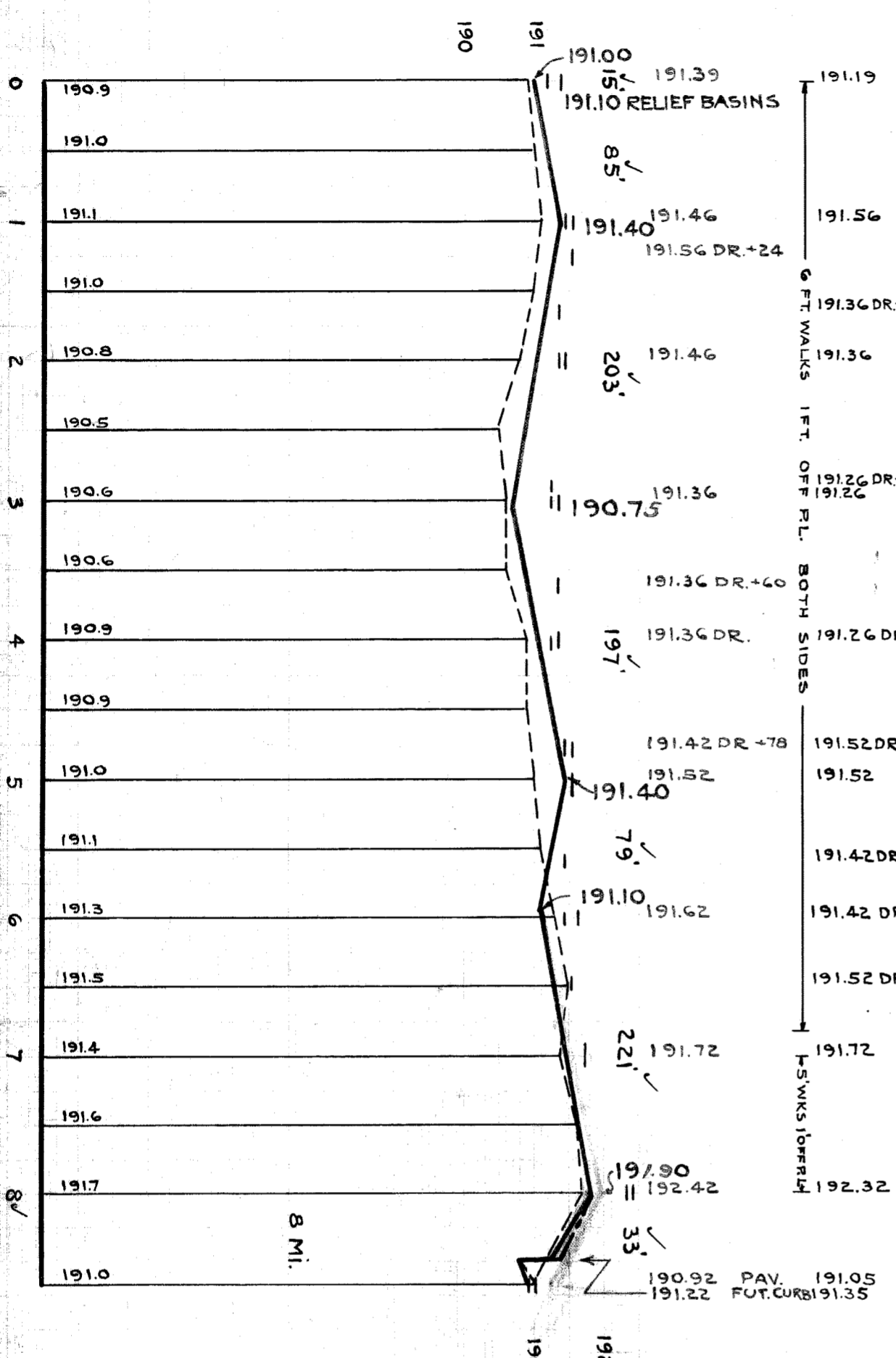
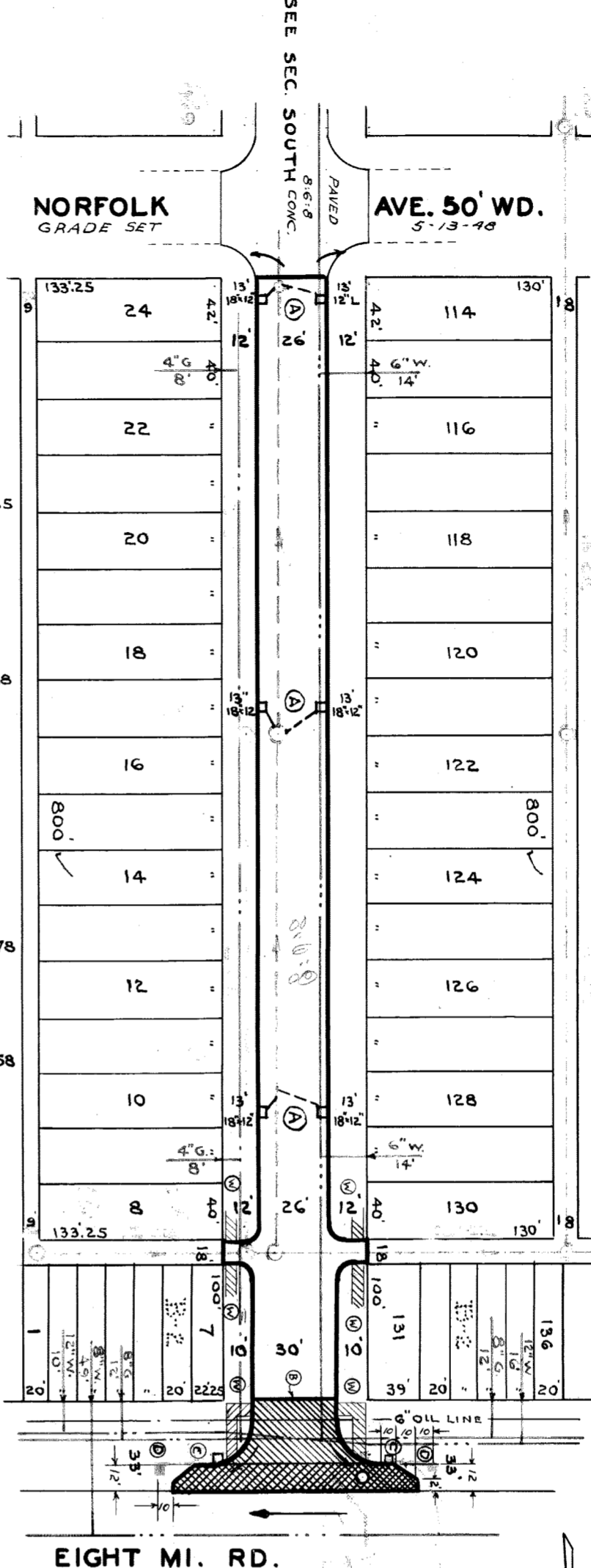


SEWER	INDEXED	REVISIONS GRADE AT 8 MI. RD. REVISED 3-2-48	DRAWING NOS.	C-327 C-324 C-733 C-325 C-326 C-524 C-390 C-585 C-586 C-739 C-739A C-739B C-938 C-587
JOB NO.	BLUE PRINT ISSUED FOR:	DATE	PROGRESS	START FINISH
QUANTITIES	EXCAVATION CYDS	679	LOTS	679
CITY	CITY	130	CITY	130
CITY	CITY	65	CITY	65
CITY	CITY	1	CITY	1
CITY	CITY	136	CITY	136
CITY	CITY	104	CITY	104
CITY	CITY	180	CITY	180
CITY	CITY	432	CITY	432
CITY	CITY	480	CITY	480
CITY	CITY	51	CITY	51
CITY	CITY	835	CITY	835



BENCH MARKS	ELEV.
ARROW ON HYD. N.W. COR. GREENLAWN & NORFOLK	194.242
ARROW ON HYD. W. SIDE GREENLAWN 440' N. OF NORFOLK	194.202
ARROW ON HYD. S.W. COR. GREENLAWN & 8 MI. RD.	195.181

- NOTE:**
- ✓ AT (A) ADJUST TOPS OF EXISTING 18" x 12" V & 1'-1 1/2" BASINS WITH FLAT TYPE FRAMES & SLATES.
 - ✓ AT (B) CONSTRUCT 30" RETURN OF 8" UNIFORM CONC. SLAB WITH TYPE II CURBS, 20 FT. RADIUS & 1/2" WIDENING STRIP OF 5" UNIFORM CONC. CLASS "C" CONCRETE.
 - ✓ AT (C) ABANDON EXISTING W.C.R. BASINS, PLUG OUTLETS WITH CLASS "C" CONCRETE.
 - ✓ AT (D) CONSTRUCT 25" D. 18" x 12" V DOME TYPE BASINS & CONNECT TO EXISTING 25" D. 18" x 12" V AS SHOWN.
 - ✓ AT (E) CONSTRUCT 15" D. 18" x 12" V STANDARD 4" SIDEWALK.
 - ✓ AT (F) ADJUST TOPS OF EXISTING SEWER MANHOLE.
 - ✓ AT (G) RECONSTRUCT CONE OF EXISTING MANHOLE, IF NECESSARY, BACKFILL SEWER PIPE TRENCHES UNDER PROPEL PAVERMENT WITH APPROVED SAND GRAVEL MATERIAL; OTHERWISE FILL TAMP WITH APPROVED EARTH LAYERS AS REQUIRED.
 - ✓ DIRT ROADWAYS & ALLEYS OF PAVEMENT SHALL BE GRADED BACK & STONED 6" DEEP UNIFORM GRADES. A DISTANCE OF 10 FT. TO MEET EXISTING GRADES. 24 CU YDS. IS INCLUDED UNDER EXCAVATION TOTALS FOR COST.
 - ✓ CONTRACTOR SHALL FURNISH ALL NECESSARY MATERIALS, INCLUDING CASTINGS & SHALL HAVE ALL UNLAVENABLE MATERIALS TO DRAW 1/40 AT STATE FARM & JOHN R. FIS.

DEPARTMENT OF PUBLIC WORKS DETROIT
CITY ENGINEER'S OFFICE - DIVISION OF PAVING DESIGN

STREET PAVING PLAN
GREENLAWN

FROM N. PL. OF NORFOLK AVE. ✓
TO 33. FT. N. OF S. PL. OF 8 MI. RD. ✓

TYPE OF PAVEMENT: PET # 2567 9" 9" JOHN SAUNDERS ET. AL.
WIDTH: 26' 30"

DESIGNED BY: J. Laborski
DRAWN BY: J. Laborski
TRACED BY: E.E.S.
CHECKED BY: E.E.S.
APPROVED: J. Laborski
ENGINEER OF STREETS
Martin R. Fisher
ASSIST. CITY ENGINEER

CARD NO. 45-19
INDEX TO NO. 88
RECORD NO.

NUMBER OF SHEETS: 1
SHEET NO. 1

91263