

15-17-50  
3-17-50  
RVA  
LVA

SEWER			
REVISIONS			
SUPPLEMENTARY DETAILS			
C-324A	C-390	C-587	C-739B
C-325	C-524	C-733	C-938
C-326A	C-585	C-739	
C-327	C-586	C-739A	

NOTE:  
BEFORE STARTING CONSTRUCTION CONTRACTOR MUST CHECK WITH UTILITIES FOR LOCATIONS OF EXISTING STRUCTURES WHETHER OR NOT INDICATED ON PLANS.

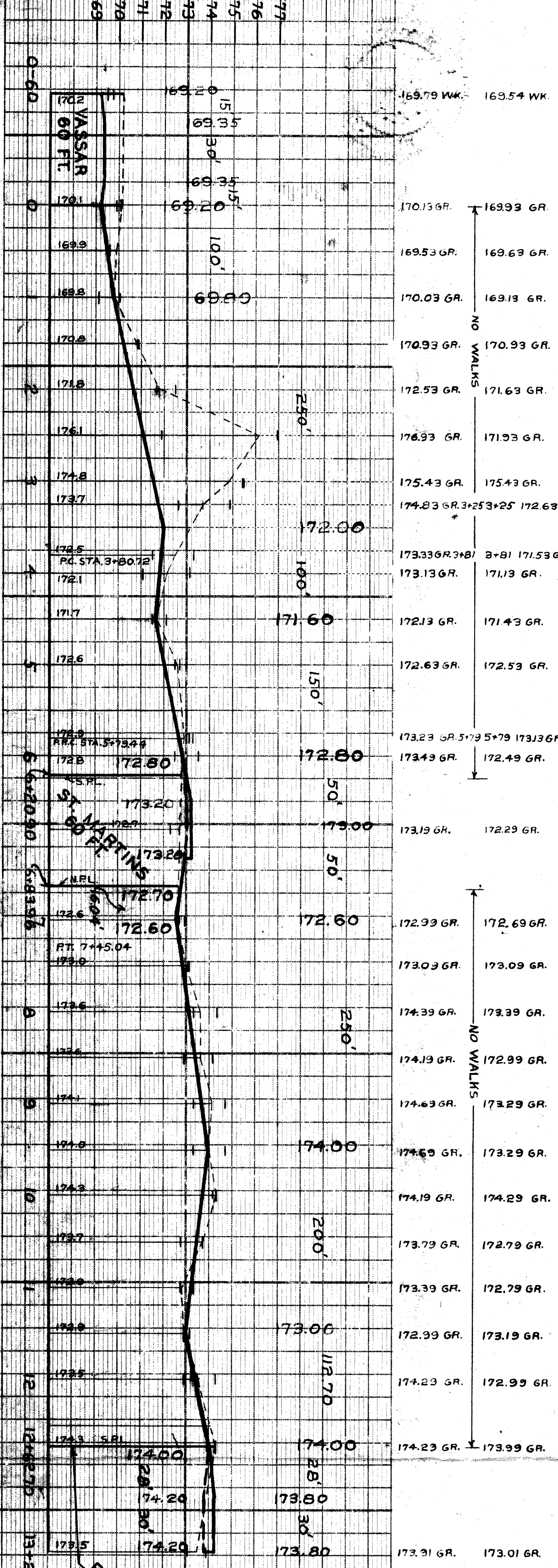
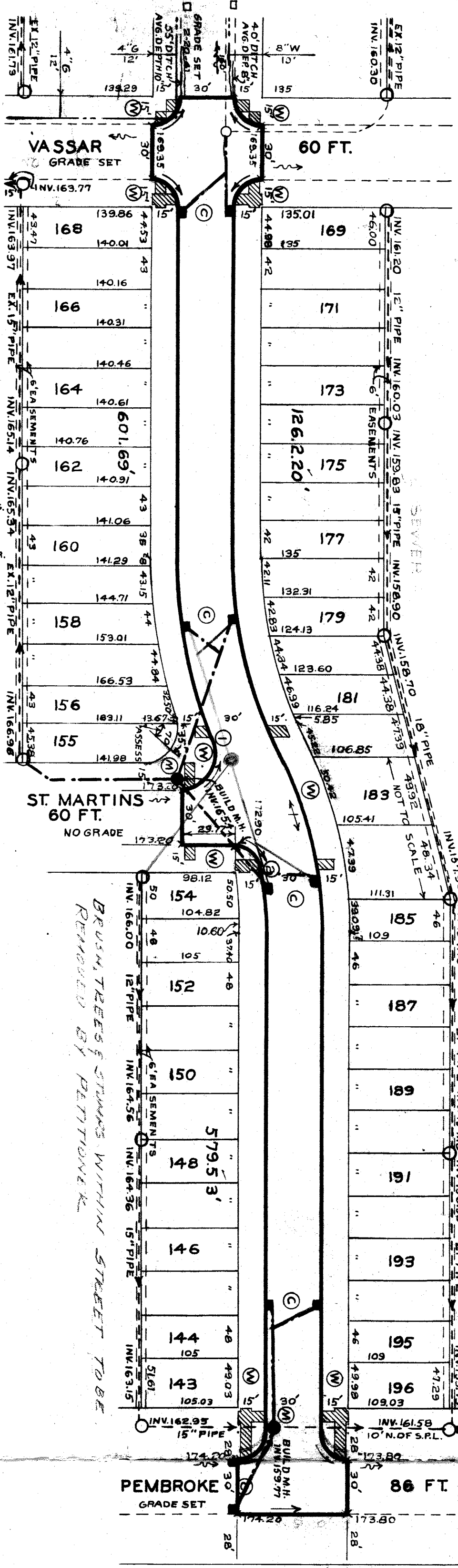
PLAN SCALE DISTORTED  
LOTS & ALLEYS - 1" = 100'  
STREET WIDTHS - 1" = 50'

DRAINAGE COMPLETED  
PAVING COMPLETED

QUANTITIES	ESTIMATED	FINAL
EXCAVATION CU. YDS.	1774	
NEW CURB LIN. FT.	4132	
PAVING 8" G. CONC. YDS.		
SIDEWALK SQ. FT.		
MANHOLES CONSTRUCT ADJUST		
BASEINS		
SEWERS - 12" LIN. FT.		

PLAN	PROFILE	COMPUTED
CHECKED	GRADE	CHECKED
DATE DRAWING	2-21-50	
LEVELS	2-7-50	
TOTAL	2769.42	1384.71
LENGTH		13800
LENGTH		138471

DESIGNED BY  
DRAWN BY  
TRACED BY  
CHECKED BY  
APPROVED  
ENGINEER OF STREETS  
DEPT. CIV. ENGINEER



BRUSH TREES & STUMPS WITHIN STREET TO BE REMOVED BY PATTONWORK

PARKS & RECREATION

CONTRACT NO. ~~2567~~ PRIVATE

DEPARTMENT OF PUBLIC WORKS DETROIT

CITY ENGINEER'S OFFICE - DIVISION OF PAVING DESIGN

STREET PAVING PLAN

GRANDVILLE

S.P.L. OF VASSAR

28'S. OF N.P.L. OF PEMBROKE

ASSIGN. NO. 25546-6  
PETITION NO. 5627

INDEX TOPO NO. 72 115

RECORD NO. 72 115

NAME OF STREET

FROM

TO

TYPE OF PAVEMENT

ONE COURSE CONCRETE - INTEGRAL CURB

8" DUMPRON AT STREET INTERSECTIONS EXCEPT AS NOTED

WIDTH 30'

SHEET 1 OF 1 SHEETS

BENCH MARKS:

CONC. MON. N.W. COR. GRANDVILLE & VASSAR  
CONC. MON. P.R.C. W.S. OF GRANDVILLE 569' N. OF N.P.L. OF VASSAR  
CONC. MON. N.E. COR. ST. MARTINS & GRANDVILLE  
CONC. MON. S.W. COR. PEMBROKE & GRANDVILLE  
ELEVATION  
170.37  
173.35  
173.18  
174.60

NOTES:

- AT (C) CONSTRUCT 10 STD. PIPE CATCH BASINS WITH STD. FRAMES & GRATES AS REQUIRED. CONNECT TO EXISTING OUTLETS AS SHOWN. SEE STD. DRWGS. C-326A & C-924.
- AT (M) CONSTRUCT 2 STD. MANHOLES, COMPLETE.
- AT (W) CONSTRUCT SQ. FT. OF STANDARD 4" SIDEWALK.
- ADJUST TOP OF 1 EXISTING SEWER MANHOLE.
- RECONSTRUCT CONE OF 1 EXISTING SEWER MANHOLE, IF NECESSARY.
- ADJUST TOPS OF 2 WATER MANHOLES.
- CONTRACTOR SHALL CONSTRUCT UNIFORM DITCHES WHERE SHOWN ON PLAN TO AVERAGE DEPTH INDICATED OR AS REQUIRED IN THE FIELD.
- TO AVERAGE DEPTH INDICATED OR AS REQUIRED IN THE FIELD.
- CUTYDS. INCLUDED UNDER EXCAVATION TOTALS FOR CONSTRUCTED SEWER PIPE TRENCHES UNDER PROPOSED PAVEMENT WITH APPROVED SAND-GRAVEL MATERIAL; ELSEWHERE FILL & TAMP WITH APPROVED EARTH LAYERS AS REQUIRED.
- DIRT ROADWAYS AT ENDS OF PAVEMENT SHALL BE GRADED BACK & STOWED 6" OFFER UNIFORMITY FOR A DISTANCE OF 10 FT. TO MEET EXISTING GRADES.
- CUTYDS. INCLUDED UNDER EXCAVATION TOTALS FOR CONSTRUCTED CONTRACTOR SHALL FURNISH NEW CASTINGS FOR ALL ADJUSTED BASINS & MANHOLES EXCEPT WHEN SALVAGED CASTINGS ARE AVAILABLE & THEIR USE PERMITTED BY THE ENGINEER. A DEDUCTION OF 15.00 FOR EACH TOP SO USED SHALL BE MADE FROM THE ORIGINAL CONTRACT PRICE. OTHERWISE THE SALVAGED CASTINGS MUST BE HAULED TO D.P.W. YARDS AT STATE FAIR & JOHNS R. STS.
- ALL CURBS WITHIN STREET INTERSECTIONS TO BE SEPARATE TYPE III OR INTEGRAL TYPE III, EXCEPT AS NOTED.

CURVE DATA

1	118' 18"	A-
2	20'	T-
3	33' 48"	A-
4	41' 29"	A-
5	25687'	S-
6	77'	
7	76'	
8	75'	
9	74'	
10	73'	
11	72'	
12	71'	
13	70'	
14	69'	