

CARD NO.
 INDEX TOPO NO. 71 123
 RECORD NO.

NUMBER OF SHEETS 4
 SHEET NO. 3

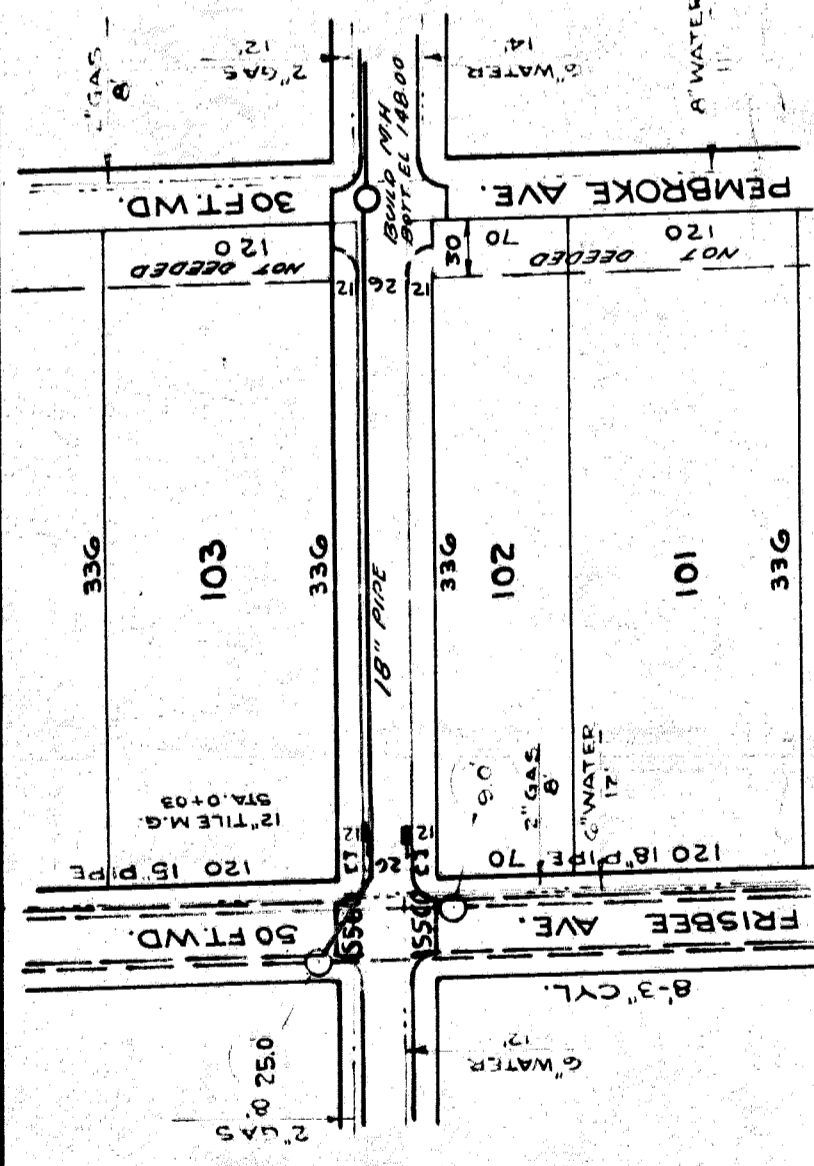
NAME OF STREET: GRANDVIEW AVE.
 FROM: N.L. SEVEN MILE RD.
 TO: N.L. NORFOLK AVE.
 TYPE OF PAVEMENT: _____
 WIDTH: _____

DESIGNED BY: *J. Syler*
 DRAWN BY: J. SYLER
 TRACED BY: _____
 CHECKED BY: _____
 APPROVED: *W. Wallace*
 ENGINEER OF STREETS
Walter R. Fisher
 4557 CITY ENGINEER

HOR. SCALE 1"=100'	BOOK 1352 PAGE 49	
VER. SCALE 1"=2'	DATE JAN. 27, 1941	
PLAN	J.S. PROFILE	J.S. COMPUTED
CHECKED J.S.	GRADE 1/6	CHECKED 1/28/41
LOTS 2L	7544.10	LENGTH 3772.05
CITY 2L	426	LENGTH 213
TOTAL 2L	7970.10	LENGTH 3985.05
COST ADVERTISING BLANKS		CITY
COST INSPECTION		LOTS

QUANTITIES	LOTS	CITY	LOTS	CITY
EXCAVATION				
STRAIGHT CURB NEW				
OLD CURB RESET				
CIRCULAR CURB				
PAVING				
CONCRETE BASE				

JOB NO.	PROGRESS
	START FINISH
BLUE PRINT ISSUED FOR:	DATE
GRADE ONLY	
CATCH BASINS	
PAVING-CLASS-	
DEPT. OF WATER SUPPLY	
GAS CO.	



BENCH MARKS
 NAIL IN FIRE BOX POLE S.W. COR. OF FRISBEE & GRANDVIEW 156.53
 NAIL IN LIGHT POLE N.W. COR. PEMBROKE & GRANDVIEW 157.83

