

1181-218-58

SEWER
REVISIONS
SUPPLEMENTARY DETAILS
DRAWING NO.

NOTE
 DESIGNER: STARTING CONSTRUCTION CONTRACTOR
 MUST CHECK WITH UTILITIES FOR LOCATIONS OF
 EXISTING STRUCTURES WHETHER OR NOT INDICATED
 ON PLANS

PLAN SCALE DISTORTED
 LOTS & ALLEYS 1" = 100'
 STREET WIDTHS 1" = 50'

DRAINAGE COMPLETED
 PAVING COMPLETED

PLAN LINES	ESTIMATED	ACTUAL
SECTION	LOT	CITY
1		
2		
3		
4		
5		
6		
7		
8		
9		
10		
11		
12		
13		
14		
15		
16		
17		
18		
19		
20		
21		
22		
23		
24		
25		
26		
27		
28		
29		
30		
31		
32		
33		
34		
35		
36		
37		
38		
39		
40		
41		
42		
43		
44		
45		
46		
47		
48		
49		
50		
51		
52		
53		
54		
55		
56		
57		
58		
59		
60		
61		
62		
63		
64		
65		
66		
67		
68		
69		
70		
71		
72		
73		
74		
75		
76		
77		
78		
79		
80		
81		
82		
83		
84		
85		
86		
87		
88		
89		
90		
91		
92		
93		
94		
95		
96		
97		
98		
99		
100		

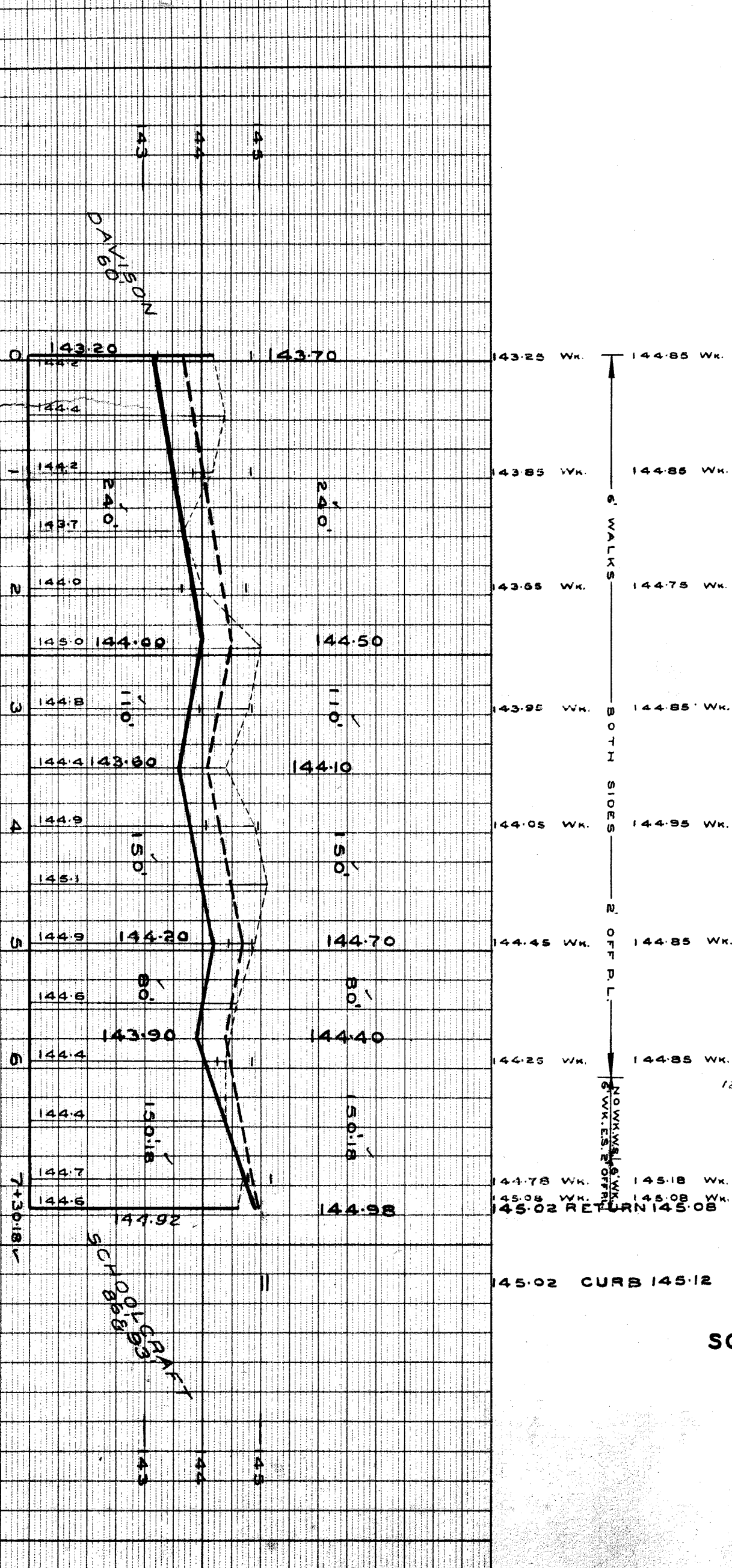
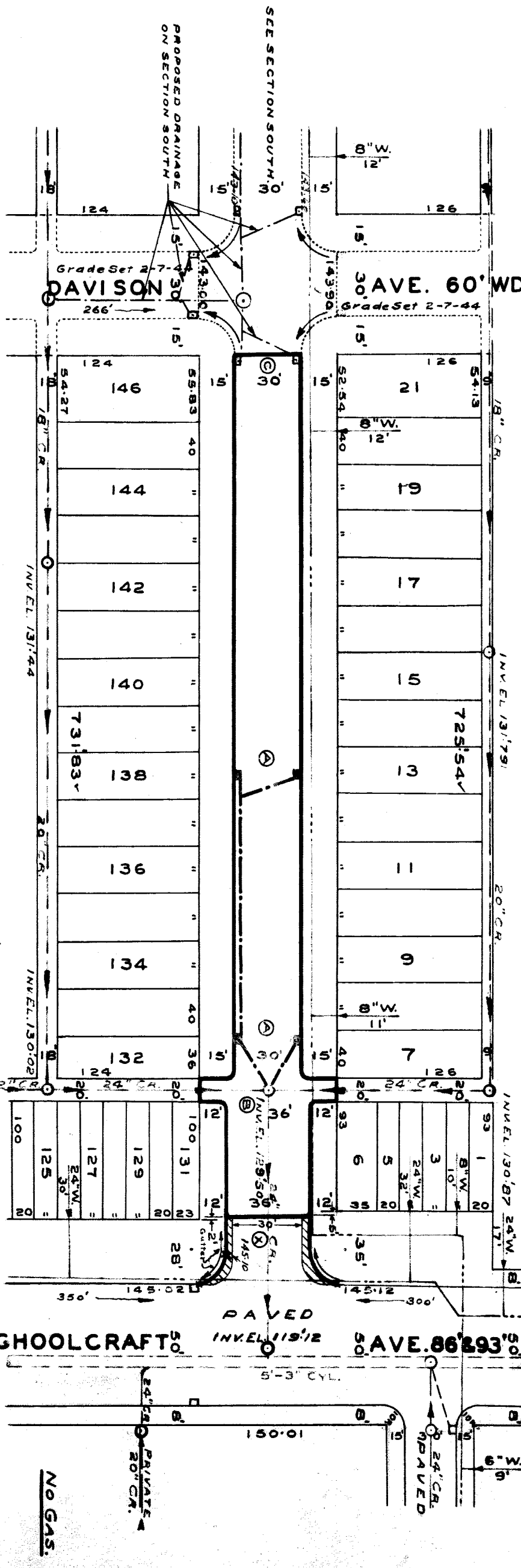
DESIGNED BY	5 Sadowski, E.S.
DRAWN BY	L.G. VAN TUYL
TRACED BY	
CHECKED BY	SEWELL RAYBURN
APPROVED BY	<i>W. J. [Signature]</i>
ENGINEER OF HIGHWAYS	
ASSIST. CITY ENGINEER	

DESIGNED BY	5 Sadowski, E.S.
DRAWN BY	L.G. VAN TUYL
TRACED BY	
CHECKED BY	SEWELL RAYBURN
APPROVED BY	<i>W. J. [Signature]</i>
ENGINEER OF HIGHWAYS	
ASSIST. CITY ENGINEER	

DEPARTMENT OF PUBLIC WORKS DETROIT
 CITY ENGINEERS OFFICE - DIVISION OF PAVING DESIGN
STREET PAVING PLAN
GRANDMONT

NAME OF STREET: N. P.L. OF DAVISON AVE.
 FROM: I.S. N. OF S.P.L. OF SCHOOLCRAFT.
 TYPE OF PAVEMENT: F.H.A. PRIVATE
 WIDTH: 30 FT.

INDEX TOP NO. 67101
 RECORD NO. 7786-B



BENCH MARKS	ELEV
PRECISION LEVEL POINTS - BRASS CAP ON CONCRETE MONUMENT AT N.E. CORNER OF ASSURBY PARK & FULLERTON	140.878
NAIL IN POLE AT S.W. CORNER OF DAVISON & GRANDMONT	145.443
SOUTH OF SCHOOLCRAFT	145.888

NOTE -

- AT (X) WIDEN EXISTING 30' RETURN WITH CURBS TO 36' AND PAVE WINDSTRIPE WITH 8" CONC. BASE AND 3" ASPHALT TOP.
- AT (O) CONSTRUCT 4 STD. 18" DIA. - V-BASINS COMPLETE AND CONNECT TO OUTLETS AS SHOWN.
- AT (A) ADJUST TOP OF EXISTING MANHOLE.
- AT (B) ADJUST TOPS OF 2 18" DIA. - V-BASINS.
- CONTRACTOR SHALL FURNISH AND INSTALL STD. FLAT TYPE CATCH BASIN WITH 18" NOTIFY D.P.W. TO SALVAGE OLD CASTINGS.