

GLENWOOD AVE.  
FROM EL. QUEEN TO MORANG

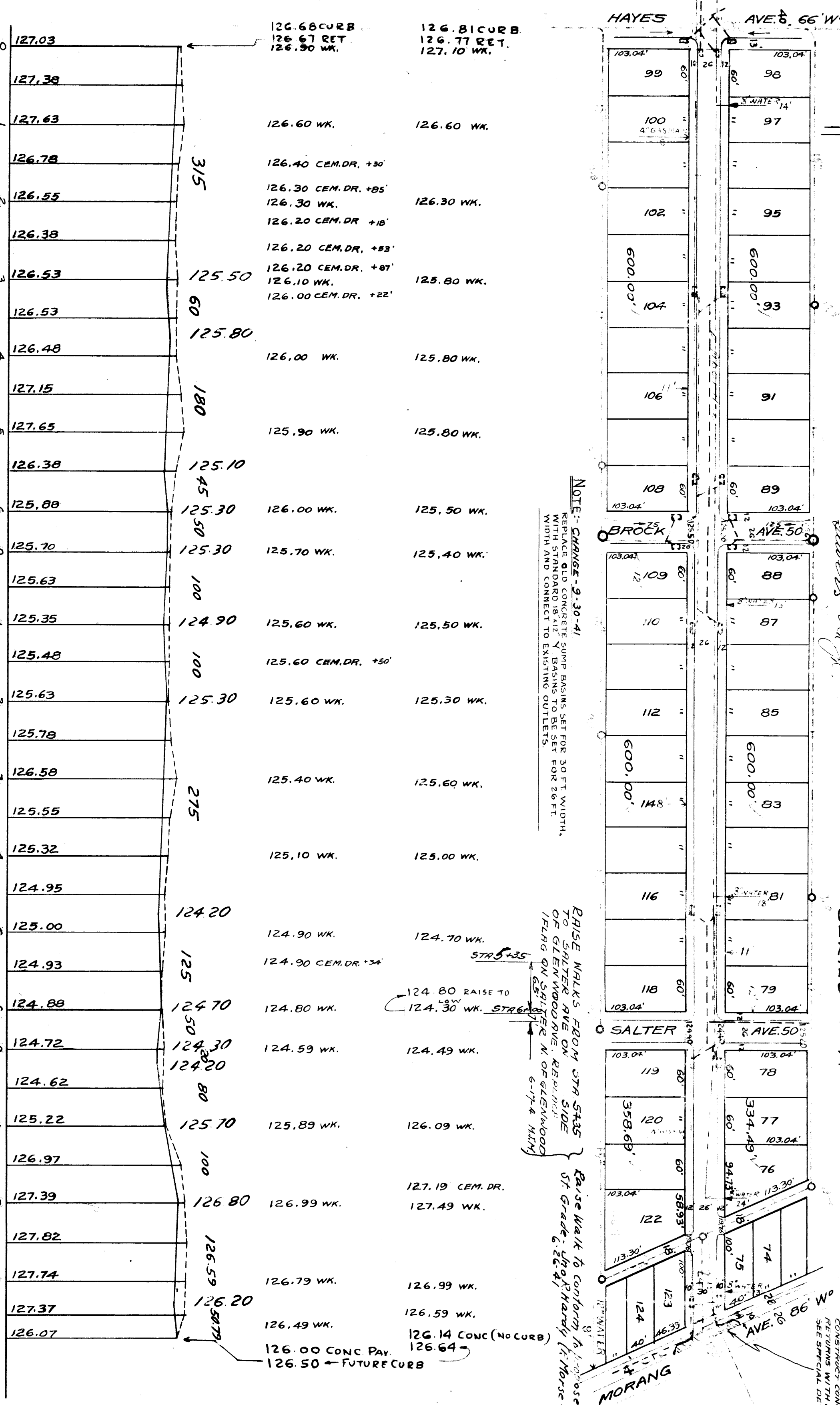
ARROW HYD. N.W. COR. PARK GROVE + HAYES 129.66  
 SPK. IN LIGHT POLE N.W. COR. BROCK + GLENWOOD 126.25  
 SPK. IN LIGHT POLE N.W. COR. SALTER + GLENWOOD 124.53  
 SPK. IN 32" MAPLE N.S. GLENWOOD 60' W. OF MORANG 128.71

CLASS "A" 6" ONE CO. CONC. 26' ± 30' WIDE

SERIES N-N

SHEET 2 OF 2

#38



NOTE: CHANGE-9-30-41  
 REPLACE OLD CONCRETE SUMP BASINS SET FOR 30 FT. WIDTH, WITH STANDARD 18" X 12" V. BASINS TO BE SET FOR 26 FT. WIDTH AND CONNECT TO EXISTING OUTLETS.

RAISE WALKS FROM STA 3435 TO SALTER AVE ON N. SIDE OF GLENWOOD AVE. REPAIR WALK ON SALTER N. OF GLENWOOD 6-17-4 M.M.  
 RAISE WALK TO conform to proposed ST. Grade. (See Phardy (H. Morse Assr.))

NOTE: CONSTRUCT CONCRETE RETURNS WITH 10' WORKING 995 SEE SPECIAL DETAIL

127.03	126.68 CURB 126.67 RET 126.90 WK.	126.81 CURB 126.77 RET 127.10 WK.
127.38		
127.63	126.60 WK.	126.60 WK.
126.78	126.40 CEM. DR. +50'	
126.55	126.30 CEM. DR. +85' 126.30 WK.	126.30 WK.
126.38	126.20 CEM. DR. +18'	
126.53	126.20 CEM. DR. +83' 126.20 CEM. DR. +87' 126.10 WK.	125.80 WK.
126.53	126.00 CEM. DR. +22'	
126.48	126.00 WK.	125.80 WK.
127.15		
127.65	125.90 WK.	125.80 WK.
126.38		
125.88	126.00 WK.	125.50 WK.
125.70	125.70 WK.	125.40 WK.
125.63		
125.35	125.60 WK.	125.50 WK.
125.48	125.60 CEM. DR. +50'	
125.63	125.60 WK.	125.30 WK.
125.78		
126.58	125.40 WK.	125.60 WK.
125.55		
125.32	125.10 WK.	125.00 WK.
124.95		
125.00	124.90 WK.	124.70 WK.
124.93	124.90 CEM. DR. +34'	
124.88	124.80 WK.	124.80 RAISE TO LOW STR. 6-17-4 M.M.
124.72	124.59 WK.	124.49 WK.
124.62		
125.22	125.89 WK.	126.09 WK.
126.97		
127.39	126.99 WK.	127.19 CEM. DR. 127.49 WK.
127.82		
127.74	126.79 WK.	126.99 WK.
127.37	126.49 WK.	126.59 WK.
126.07	126.00 CONC. PAY. 126.50 ← FUTURE CURB	126.14 CONC (NO CURB) 126.64 ←

DESIGNED BY  
 DRAWN BY  
 TRACED BY  
 CHECKED BY  
 APPROVED BY  
 CITY ENGINEER

EXISTING POOLS & BASINS  
 NEW POOLS & BASINS

3 053 GC ✓  
 3 501 10 ✓  
 3 354 16 ✓  
 1 526 83 ✓  
 1 500 55 ✓  
 1 677 38 ✓