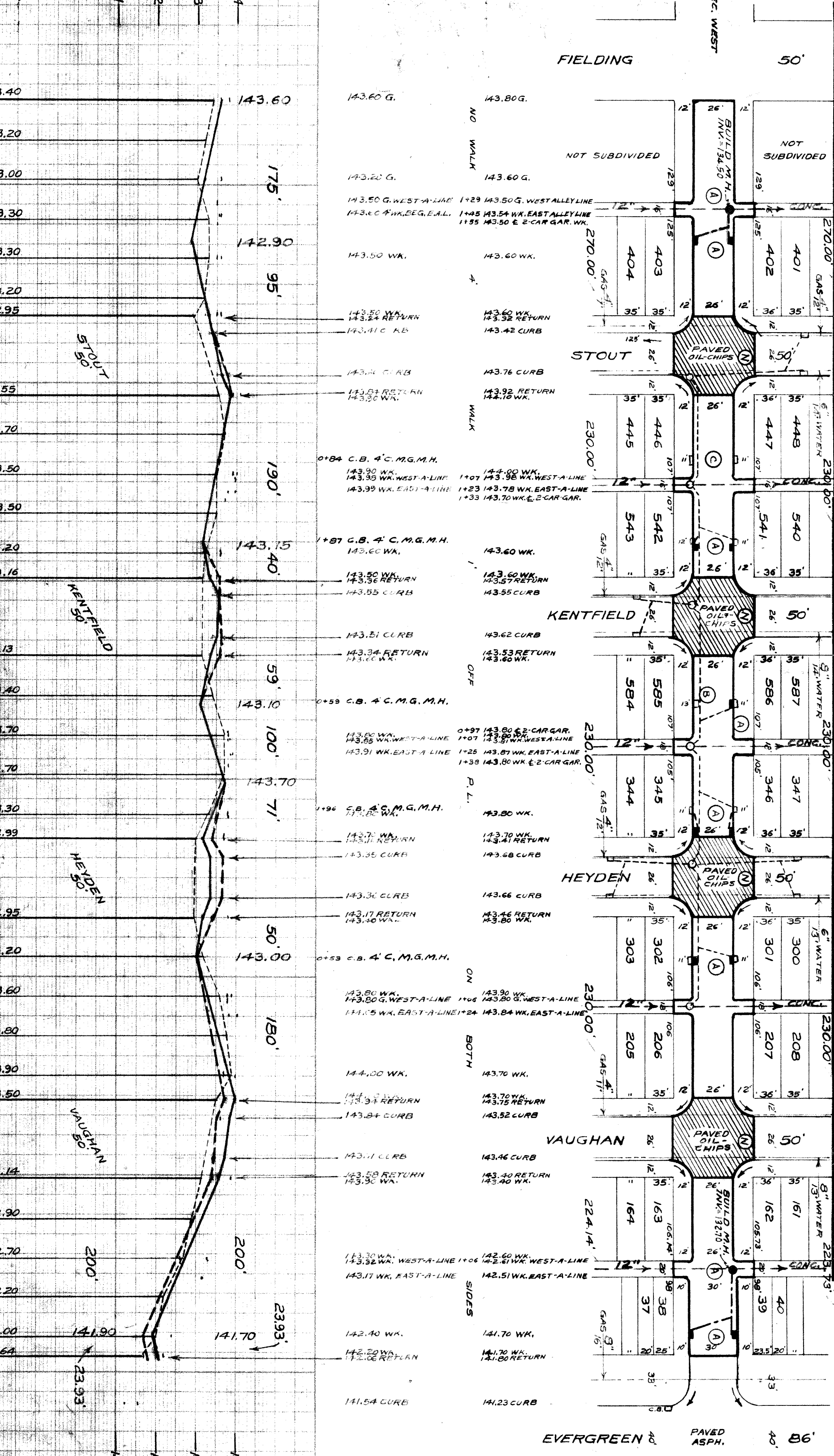


702 51911

SEWER INDEXED	JOB NO.	PROGRESS	QUANTITIES	LOTS	CITY	LOTS	CITY	HOR SCALE 1" = 100'	DATE 1-11-24	DESIGNED BY	DATE 1-11-24	APPROVED	INDEX TO NO. 76	RECORD NO.	NAME OF STREET	TYPE OF PAVEMENT	WIDTH 26' 4.30"
REVISIONS:	BLUE PRINT ISSUED FOR	START	EXCAVATION	1 208	406			VER SCALE 1" = 2'	DATE 1-11-24	DRAWN BY	DATE 1-11-24	CHECKED BY	INDEX TO NO. 111	RECORD NO.	FROM	TO	
	GRADE ONLY	FINISH	STRAIGHT CURB NEW	2 112	220			PLAN	F.M.	PROFILE	F.M.	COMPUTED	CHECKED BY		E.P.L. OF FIELDING	W.P.L. OF EVERGREEN	
	CATCH BASINS		OLD CURB RESET	-	-			CHECKED	F.M.	GRADE	F.M.	CHECKED	APPROVED		GLENDALE		
	PAVING-CLASS.		CIRCULAR CURB	-	-			LOT 2L	2,191,877	LENGTH	1,095.93	CHECKED					
	DEPT. OF WATER SUPPLY		PAVING	3 210	1 389			CITY 2L	576,000	LENGTH	288,000	CHECKED					
	GAS CO.		12" SEWER L.F.	200	90			TOTAL 2L	2,767,877	LENGTH	1,383,933	CHECKED					
			WALKS - S.F.	-	720			LOT 3L		LENGTH		CHECKED					
			M.H.S. BUILT	-	2			CITY 3L		LENGTH		CHECKED					
			BASINS CONST.	1	2							CHECKED					



NOTE:
 (A) ABANDON 7 EXISTING S.M.H. BASINS AND BUILD 2 STD. M.H.S. AND 11 STD. 18" X 12" V-BASINS AND CONNECT TO EXISTING OUTLETS AS SHOWN.
 (B) ADJUST TOP OF EXISTING S.M.H. BASIN, FURNISH AND INSTALL STD. C.B. FRAME AND GRATE.
 (C) SET NEW CIRCLES TO 10 RADIUS, NOTIFY D.P.W. STREET MAINTENANCE DIVISION FOR SALVAGE OF MACADAM STORM-ADJUST TOPS OF 6 EXISTING MANHOLES.
 NOTE: NOTIFY D.P.W. TO SALVAGE OLD CASTINGS

BENCH MARKS
 ARROW HYD. S.E. COR. STOUT+GLENDALE 143.60 G.
 ARROW HYD. N.E. COR. HEYDEN+GLENDALE 143.80 G.
 ARROW HYD. N.E. COR. EVERGREEN+GLENDALE 143.90 G.
 ARROW HYD. N.E. COR. VAUGHAN, N.O.F. ALLEY S. SCHOOLCRAFT 143.217
 15 A BRASS CAP IN CONC. MONUMENT IN W.A. 143.217

NOTE:
 AT (N) EXISTING INTERSECTIONS OF MAC-OIL-CHIPS TO BE TORN OUT AND REPLACED WITH CONCRETE SLAB UNDER THIS CONTRACT.

10 - EX. S.M.H. BASINS

DEPARTMENT OF PUBLIC WORKS DETROIT
 CITY ENGINEER'S OFFICE - DIVISION OF PAVING DESIGN
STREET PAVING PLAN
 E.P.L. OF FIELDING
 W.P.L. OF EVERGREEN
 GLENDALE
 A.P. 3-9
 SHEET NO. 1