

SEWER REVISIONS	C-324A	C-380	C-733
	C-325	C-524	C-738
	C-326-A	C-585	C-739-A
	C-327	C-586	C-739-B

NOTE: BEFORE STARTING CONSTRUCTION CONTRACTOR MUST CHECK WITH UTILITIES FOR LOCATIONS OF EXISTING STRUCTURES WHETHER OR NOT INDICATED ON PLANS.

PLAN SCALE DISTORTED

LOTS & ALLEYS 1"=100'

STREET WIDTHS 1"=50'

DRAINAGE COMPLETED

PAVING COMPLETED

QUANTITIES	ESTIMATED	FINAL
EXCAVATION CU. YDS.	LOTS	CITY
NEW CURB LIN. FT.	LOTS	CITY
PAVING SQ. YDS.		
SIDEWALK SQ. FT.		
MANHOLES ADJUST		
CONSTRUCT		
BASES ADJUST		
CONSTRUCT		
SEWER/SIS LIN. FT.		

HOR. SCALE	1"=100'	BOOK	1178	PAGE	51
VAR. SCALE		DATE	7-28-47		
PLAN	HB1	PROFILE	HB1	COMPUTED	
CHECKED	55	GRADE	R3	CHECKED	
LENGTH	2169.50	LENGTH	1084.75		
CITY	220.00	LENGTH	110.00		
TOTAL	2389.50	LENGTH	1194.75		
CITY		LENGTH			

DESIGNED BY H.B. LaFrance

DRAWN BY

TRACED BY

CHECKED BY S.A.S. Robert R. Roehl

APPROVED

ENGINEER OF STREETS

ASS'T CITY ENGINEER

CARD NO. INDEX TOPO. NO. 63 105

RECORD NO.

NAME OF STREET N.P.L. TROJAN

FROM 30' N. OF S.P.L. EIGHT MILE

DATE 3-17-48

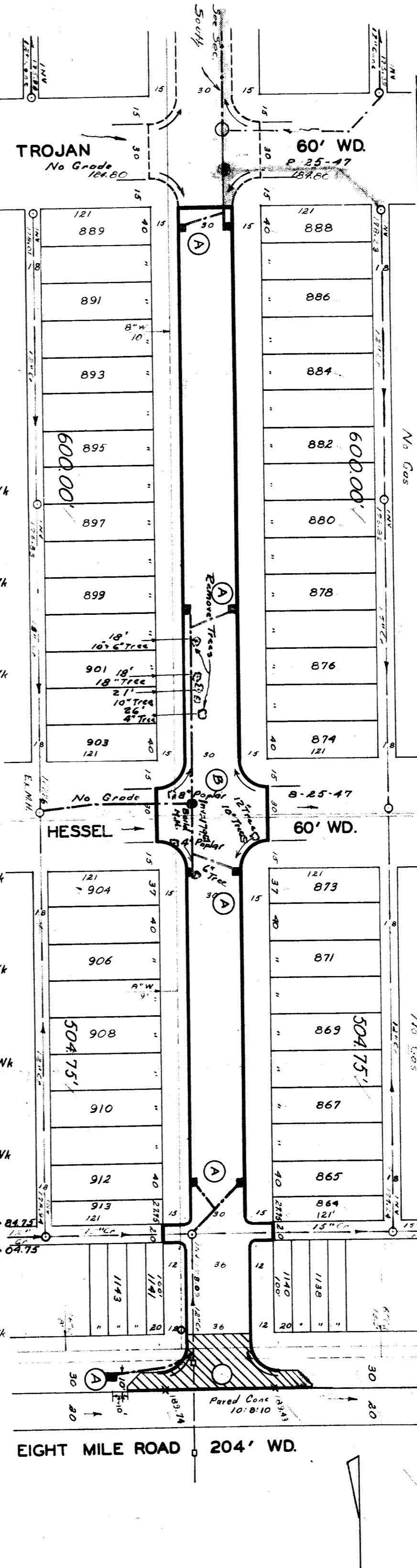
TYPE OF PAVEMENT 8:6:8 ONE COURSE CONCRETE, INTEGRAL CURB

REQUESTED BY W. WEBER

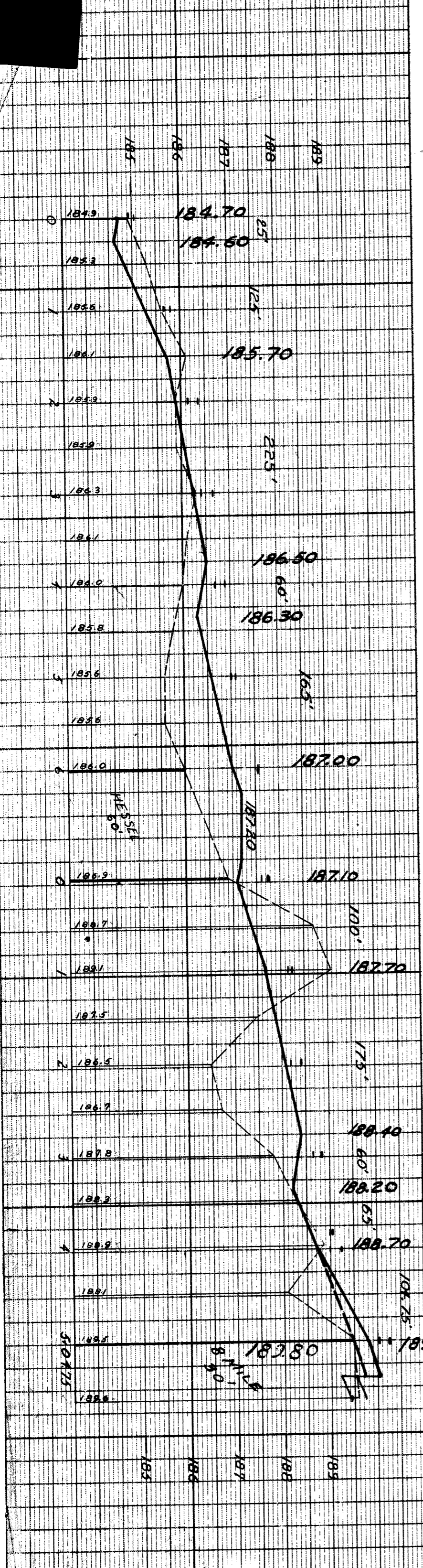
DATE 3-17-48

ASSIGN NO. 264-18

SHEET 1 OF 1 SHEETS



184.94 Wk	185.05 Wk	187.00 Wk	187.10 Wk	187.74 Wk	187.61 Wk	189.28 Wk	190.05 Wk
185.67 Wk	185.79 Wk	186.41 Wk	186.64 Wk	188.24 Wk	188.16 Wk	189.20 Wk	189.00 Wk
186.16 Wk	186.29 Wk	186.70 Wk	186.90 Wk	188.84 Wk	188.66 Wk	190.28 Wk	190.04 Wk
187.00 Wk	187.10 Wk	187.52 Wk	187.55 Wk	188.41 Wk	188.19 Wk	189.20 Wk	189.00 Wk
187.74 Wk	187.61 Wk	188.24 Wk	188.16 Wk	188.84 Wk	188.66 Wk	189.28 Wk	190.05 Wk
188.24 Wk	188.16 Wk	188.84 Wk	188.66 Wk	189.28 Wk	189.00 Wk	190.28 Wk	190.04 Wk



NOTES

(A) CONSTRUCT 9 STD. 18"x12"-Y-BASINS AND CONNECT AS SHOWN.

(B) CONSTRUCT 1 STD. WHOLE AND CONNECT AS SHOWN.

BENCH MARKS

PLBM 105.254 A NE Cor Archdale & Pembroke 182.495

Bear Spike in 18" Elm W side of Gilchrist 390' N of Hessel 189.18

Iron pipe in conc man. SE cor Alley 3 of 8 mile in Gilchrist 189.41

PLBM 105.253 A SE cor Archdale & 8 Mile 190.982

Application 248-217