

13 B.P. 9/14/46

CONTRACT NO. _____

DEPARTMENT OF PUBLIC WORKS DETROIT
 CITY ENGINEERS' OFFICE - DIVISION OF PAVING DESIGN
STREET PAVING PLAN

GILCHRIST

NAME OF N.P.L. OF SEVEN MILE ROAD
 FROM 6' N. STREET TO N.P.L. OF VASSAR

APPLIC. NO. 248-128
 SHEET NO. 1 OF 1 SHEETS

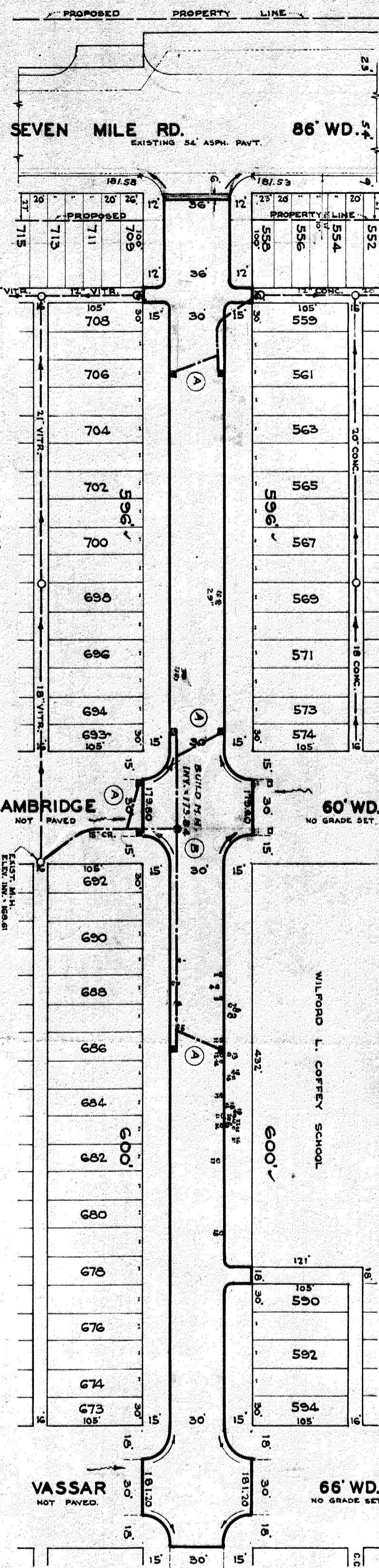
RECORD NO. 63 105
 TYPE OF PAYMENT: C.C. RES. ONE COURSE CONCRETE, INTERNAL CURB
 REQUESTED BY: SPOON BROTHERS BUILDERS. DATE: 5-7-46

DESIGNED BY	SPONBROS
DRAWN BY	T. KANOV
TRACED BY	T. K.
CHECKED BY	SEAFOR
APPROVED	RECOM
ASSIST. CITY ENGINEER <i>(Signature)</i> ENGINEER OF STREETS	

VER. SCALE 1" = 50'	BOOK 1652	PAGE 12-14
PLAN	T.K.	PROFILE
CHECKED	5.5	GRADE
DATE DRAWING	5.5	COMPUTED
PLAN	T.K.	PROFILE
CHECKED	5.5	GRADE
DATE DRAWING	5.5	COMPUTED
PLAN	T.K.	PROFILE
CHECKED	5.5	GRADE
DATE DRAWING	5.5	COMPUTED

QUANTITIES	ESTIMATED	FINAL
EXCAVATION CU YRD.	1459	270
NEW CURB LIN. FT.	975	847
PAVING SQ. YRD.	620	620
SIDEWALK SQ. FT.		
MANHOLES CONSTRUCT ADJUST	1	
SEWER MAINS CONSTRUCT		
SEWER MAINS LIN. FT.		
SEWER MAINS LIN. FT.		

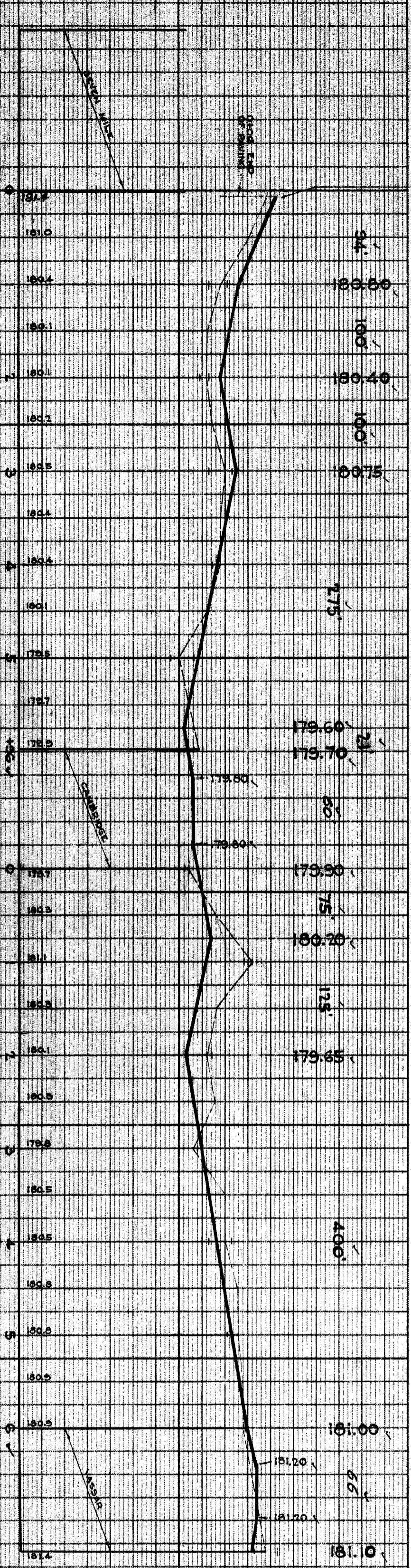
SEWER REVISIONS	
C-324 A	C-733
C-325	C-739
C-328 A	C-738 A
C-327	C-738 B



TREE REMOVAL SCHEDULE

TREE NO.	SIZE	KIND	DIST FROM E
1	8" D.	POPLAR	13.0 R.
2	8" D.	POPLAR	13.0 R.
3	8" D.	POPLAR	13.0 R.
4	8" D.	POPLAR	13.0 R.
5	8" D.	POPLAR	13.0 R.
6	8" D.	POPLAR	13.0 R.
7	8" D.	POPLAR	13.0 R.
8	8" D.	POPLAR	13.0 R.
9	8" D.	POPLAR	13.0 R.
10	8" D.	POPLAR	13.0 R.
11	8" D.	POPLAR	13.0 R.
12	8" D.	POPLAR	13.0 R.
13	8" D.	POPLAR	13.0 R.
14	8" D.	POPLAR	13.0 R.
15	8" D.	POPLAR	13.0 R.
16	8" D.	POPLAR	13.0 R.
17	8" D.	POPLAR	13.0 R.
18	8" D.	POPLAR	13.0 R.
19	8" D.	POPLAR	13.0 R.
20	8" D.	POPLAR	13.0 R.
21	8" D.	POPLAR	13.0 R.
22	8" D.	POPLAR	13.0 R.
23	8" D.	POPLAR	13.0 R.
24	8" D.	POPLAR	13.0 R.
25	8" D.	POPLAR	13.0 R.
26	8" D.	POPLAR	13.0 R.
27	8" D.	POPLAR	13.0 R.
28	8" D.	POPLAR	13.0 R.
29	8" D.	POPLAR	13.0 R.
30	8" D.	POPLAR	13.0 R.

(A) CONSTRUCT 8 STD. 18" DIA. Y-BASINS COMPLETE.
 (B) CONSTRUCT 1 STD. 48" DIA. WHOLE COMPLETE.
 ALL CURBS WITHIN STREET INTERSECTIONS TO BE SEPARATE TYPE II OR INTEGRAL TYPE III



SEVEN MILE RD. 86' WD. 5' 4"
 EXISTING 54' ASPH. PAVT.
 CAMBRIDGE NOT PAVED
 VASSAR NOT PAVED
 WILFORD L. COFFEY SCHOOL
 BENCH MARKS
 ELEV. 181.599 ✓
 184.75 ✓
 184.46 ✓
 184.04 ✓