

|                       |         |          |
|-----------------------|---------|----------|
| SEWER                 | OLD MAP | 12-15-42 |
| REVISIONS             |         |          |
| SUPPLEMENTARY DETAILS |         |          |
| C-324A                | C-587   | C-739B   |
| C-325                 | C-733   | C-938    |
| C-326A                | C-585   | C-739    |
| C-327                 | C-586   | C-739A   |
|                       |         | C-1608   |

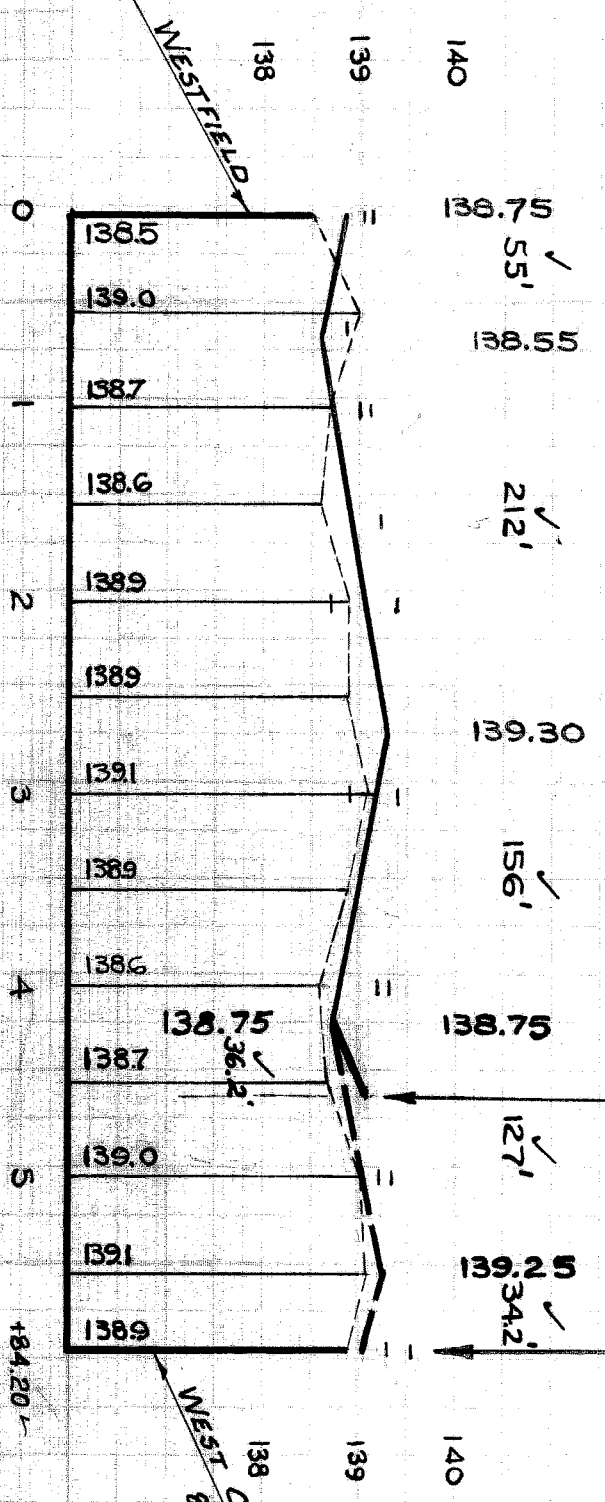
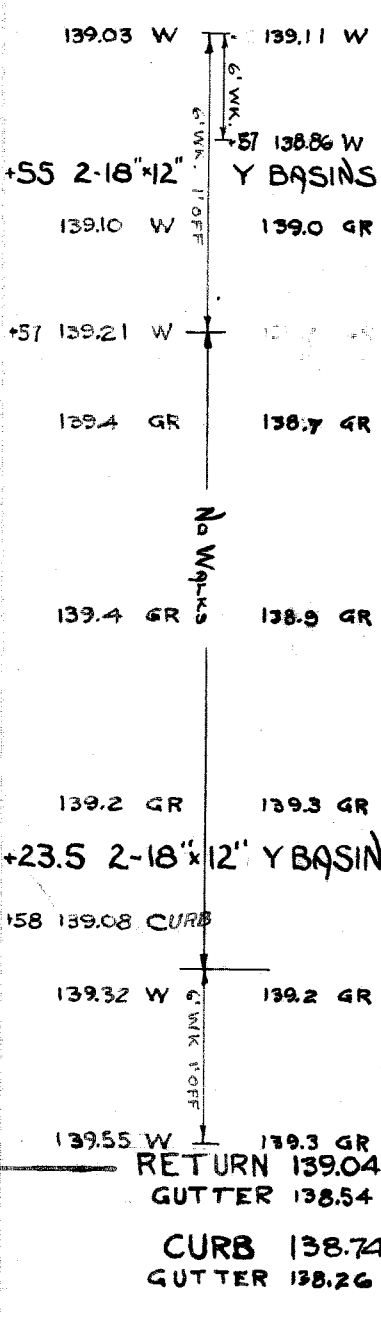
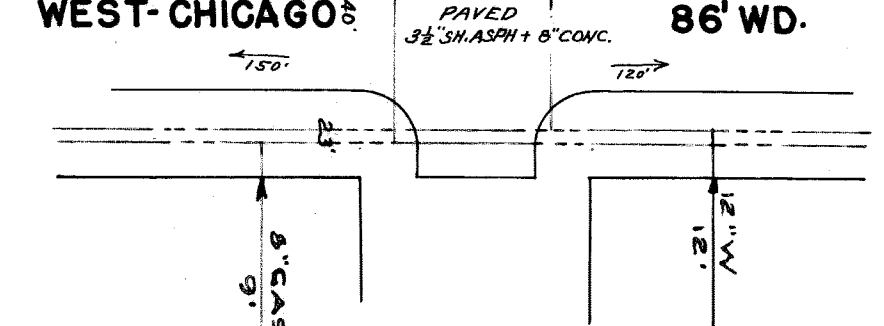
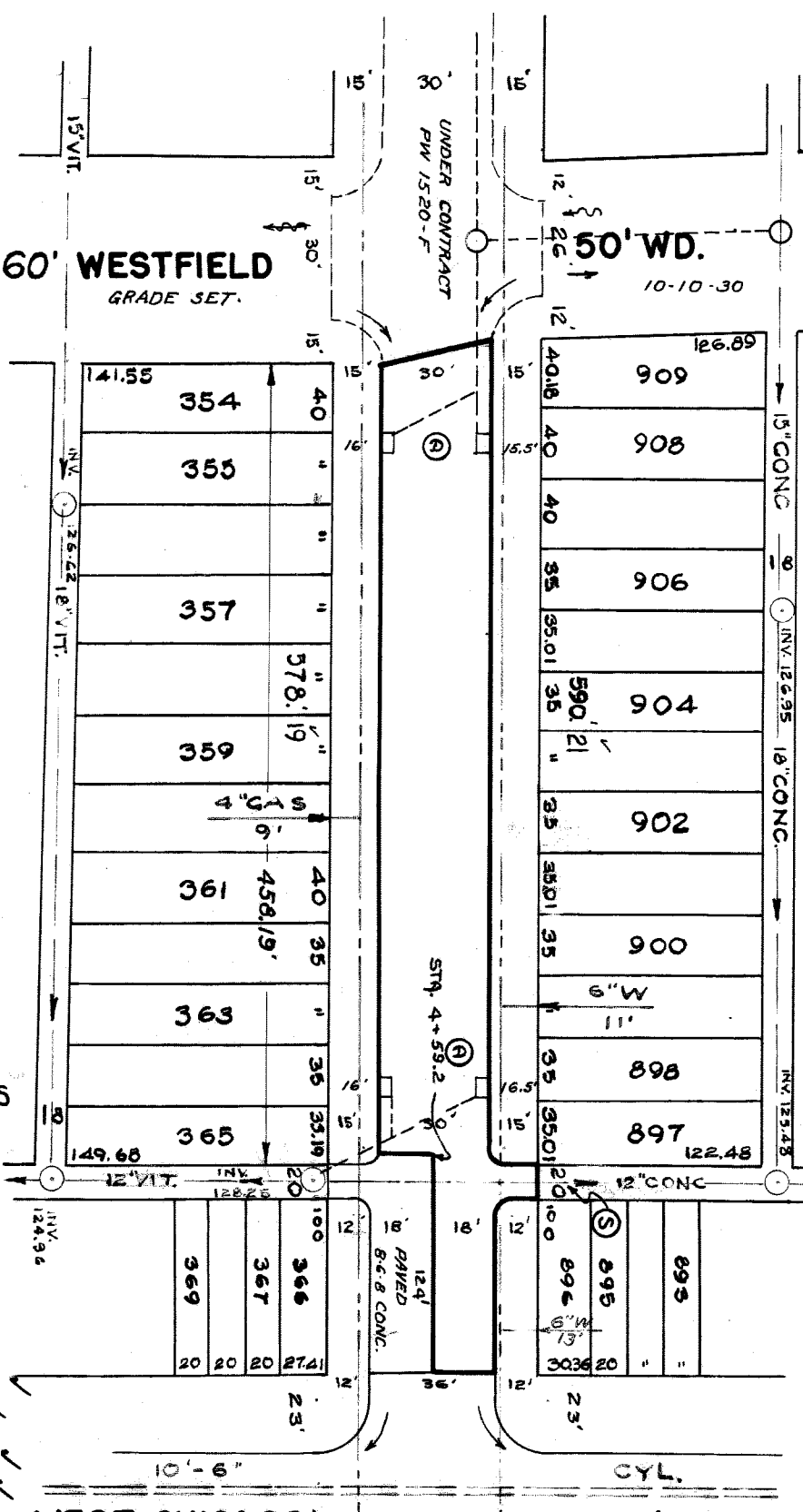
NOTE:  
 BEFORE STARTING CONSTRUCTION CONTRACTOR MUST CHECK WITH UTILITIES FOR LOCATIONS OF EXISTING STRUCTURES WHETHER OR NOT INDICATED ON PLANS  
 PLAN SCALE DISTORTED  
 LOUIS & ALLEYS 1"=100'  
 STREET WIDTHS 1"=50'  
 DRAINAGE COMPLETED 11-10-48  
 PAVING COMPLETED C.C. 9-4-51

| QUANTITIES | ESTIMATED | FINAL |
|------------|-----------|-------|
| LOTS       | CITY      | CITY  |
| 558        | 43        |       |
| 1796       | 69        |       |
| 100        | 100       |       |
| 100        | 100       |       |
| 4          | 4         |       |
| 10         | 10        |       |

|           |         |          |         |
|-----------|---------|----------|---------|
| NON SCALE | 1"=100' | DATE     | 1-28-50 |
| SCALE     | 1"=2'   | DATE     | 8-18-50 |
| DATE      | 8-22-50 | COMPUTED | D.B.    |
| CHECKED   | J.E.    | CHECKED  | 55      |
| DATE      | 1028.40 | LENGTH   | 10      |
| TOTAL     | 1048.40 | CITY     | 524.20  |

DESIGNED BY: G. OLIVER  
 DRAWN BY: SCOTTON-REED-ROOP  
 CHECKED BY: J. F. BAKER  
 APPROVED BY: M. J. MURPHY  
 REGISTERED PROFESSIONAL ENGINEER

CONTRACT NO. **PW 1619W**  
 DEPARTMENT OF PUBLIC WORKS DETROIT  
 CITY ENGINEERS OFFICE - DIVISION OF PAVING DESIGN  
**STREET PAVING PLAN**  
**FIELDING**  
 FROM: N. P. L. OF WESTFIELD  
 TO: S. P. L. OF WEST-CHICAGO  
 SHEET NO. 5060  
 TOTAL SHEETS 1  
 INDEX TO NO. 77  
 RECORD NO. 110  
 DATE: 5-6-50  
 MONTH: 30' 118'



**BENCH MARKS**  
 P.L.B.M. #10-254, N.E. COR. EVERGREEN & JOY RD.  
 ABE. ON HYD. N.W. COR. WESTFIELD & FIELDING  
 ARE. ON HYD. N.W. COR. FIELDING & CHICAGO  
 P.L.B.M. #10-255 N.E. COR. EVERGREEN & CHICAGO  
 NOTE: P.L. OFFSET 5 FT. TO + IN WALK

**FOR SYMBOLS (A), ETC. - SEE STD. DRWG. #C-327**

92961