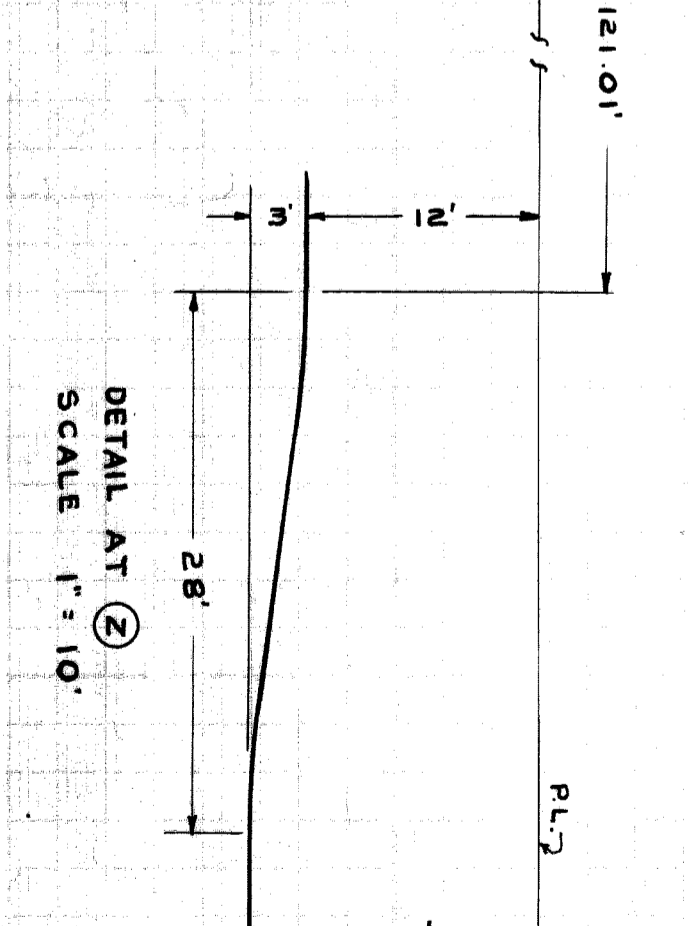
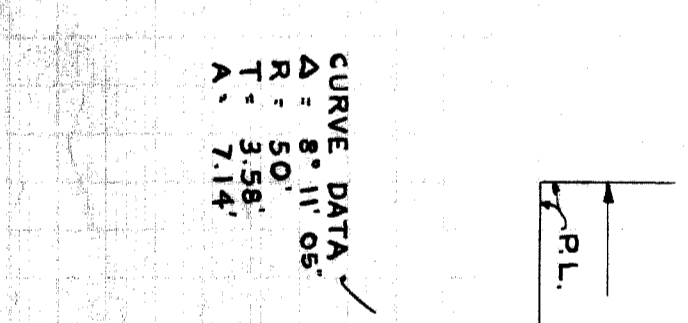
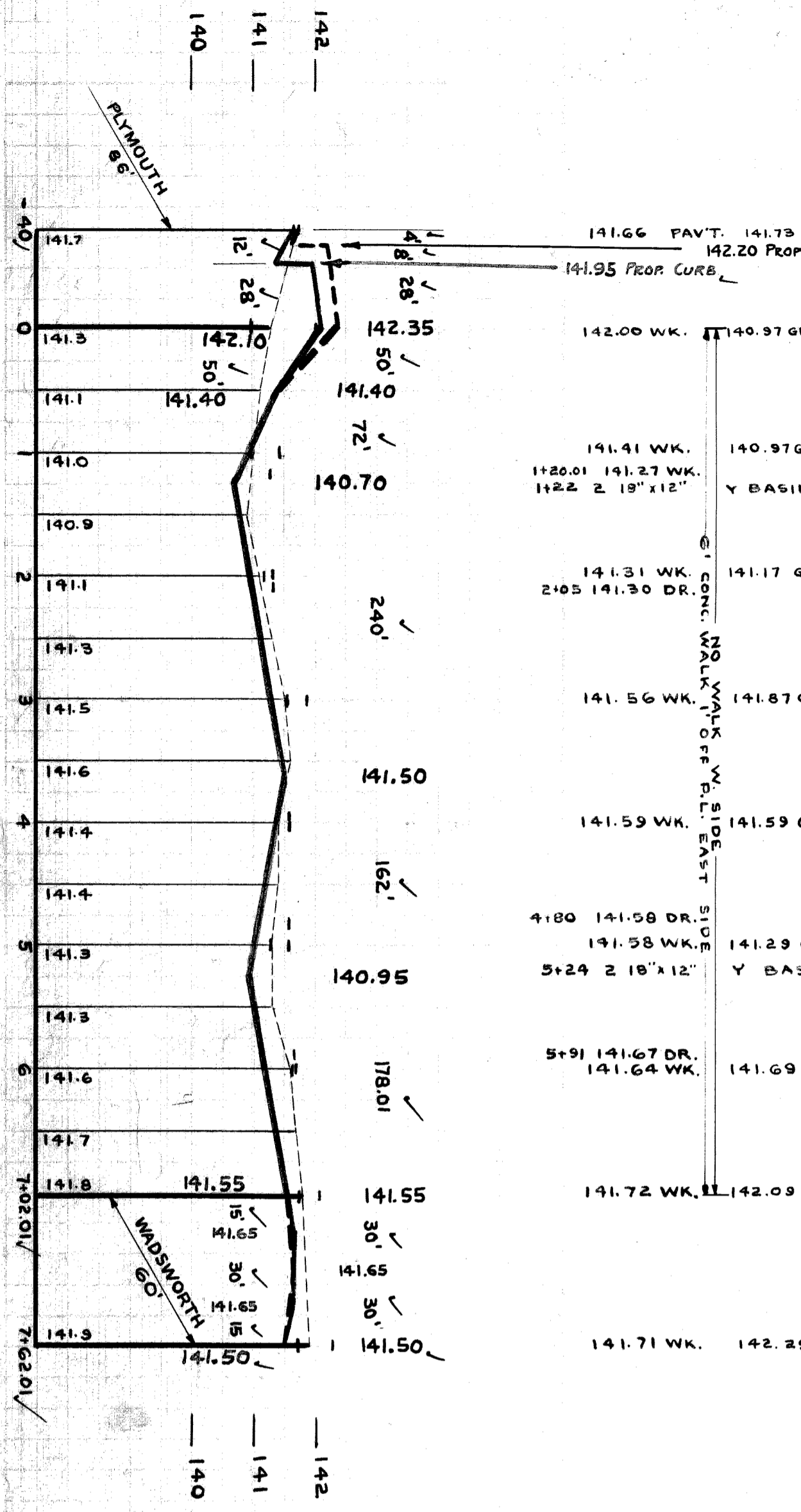
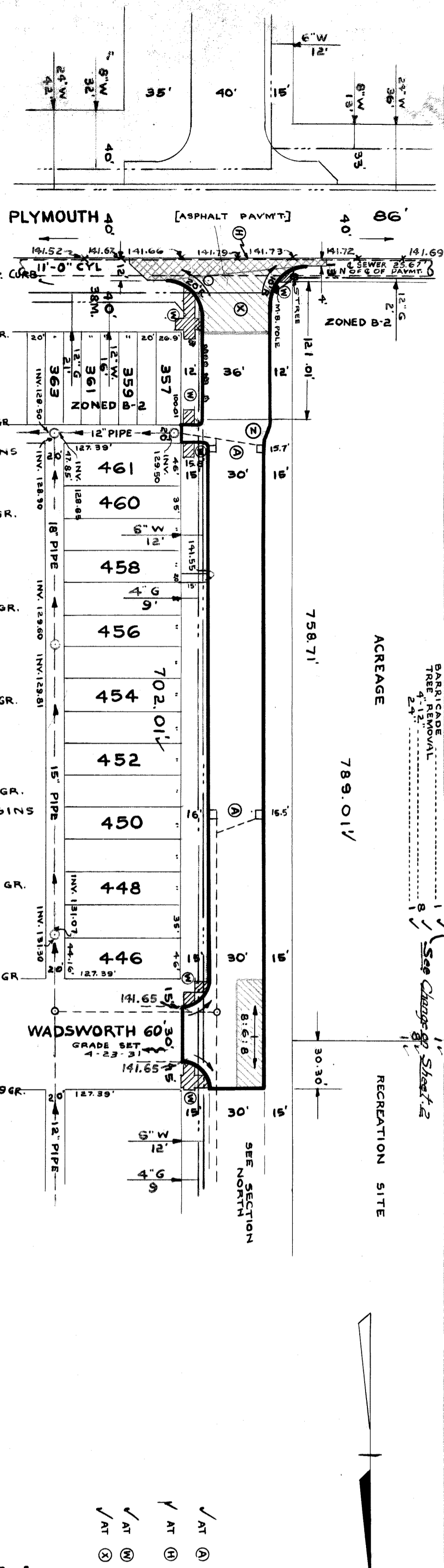


PROJECT NO. 265 S. OF NPL OR PLYMOUTH  
 SHEET NO. 2 OF 2  
 CITY ENGINEER: K.J. MEYERS  
 PROJECT ENGINEER: M. R. ...  
 RECORD NO. 77 III

REVISION	DATE	DESCRIPTION
REVISION	OLD MAP	5-16-46
C-327	C-586	C-739A
C-326A	C-585	C-739
C-324A	C-587	C-739B
C-323	C-524	C-938

QUANTITIES	ESTIMATED	FINAL
RECONSTRUCTION - CURB	2753	176
RECONSTRUCTION - WALK	24	52
RECONSTRUCTION - DRIVE	6289	69
RECONSTRUCTION - SIDEWALK	50	251
RECONSTRUCTION - SIDEWALK	72	86
RECONSTRUCTION - SIDEWALK	576	72
RECONSTRUCTION - SIDEWALK	35	934
RECONSTRUCTION - SIDEWALK	7	5.3
RECONSTRUCTION - SIDEWALK	3	0.1
RECONSTRUCTION - SIDEWALK	100	3
RECONSTRUCTION - SIDEWALK	30	12



TREE REMOVAL SCHEDULE	STA. TYPE	DIAM. (IN.)	PL.
0-16	ELM	4"	12.4'
0-20	ELM	4"	12.5'
0-26	ELM	4"	12.5'
0-35	ELM	4"	12.4'
0-47		8"	12.5'
0-50		8"	12.5'
0-54	ELM	4"	12.2'
0-73	ELM	4"	12.5'

**NOTES (SHEET 1 OF 2)**

- ADJUST TOPS OF 4 EXISTING CATCH BASINS USING FLAT TYPE FRAMES & GRATES. SEE NOTE PERTAINING TO CASTINGS.
- CONTRACTOR SHALL REMOVE CONCRETE HEADER AND BROKEN ASPHALT BACK OF JUNCTION AS REQUIRED IN FIELD AND FILL WITH COLD PATCH TO MEET NEW GRADES. 10 CU.YDS. INCLUDED UNDER EXCAVATION TOTALS FOR COST.
- CONSTRUCT 648 SQ.FT. OF STANDARD 4" SIDEWALK.
- CONSTRUCT 36' RETURN OF 8" UNIFORM CONCRETE WITH TYPE II CURBS, AND 4 FT. WIDENING ON THE WEST SIDE WITH 10' RADIUS AND 12 FT. WIDENING STRIP ON EAST SIDE WITH 20' RADIUS. WIDENING SLABS TO BE OF 9" UNIFORM CONCRETE MANHOLE, IF NECESSARY.
- ADJUST TOPS OF 1 EXISTING SEWER MANHOLES. RECONSTRUCT CONE OF 1 SEWER MANHOLE, IF NECESSARY.
- ADJUST TOP OF 1 WATER MANHOLE.
- CONTRACTOR SHALL GRUB & REMOVE 8-4" TO 12" TREES AS INDICATED ON PLAN @ UNIT BID COST PER TREE.
- DIRT ROADWAYS & ALLEY AT ENDS OF PAVEMENT SHALL BE GRADED BACK & STONED 6" DEEP UNIFORMLY FOR A DISTANCE OF 10 FT TO MEET EXISTING GRADES. 33 CU. YDS. INCLUDED UNDER EXCAVATION TOTALS FOR COST.
- CONTRACTOR SHALL FURNISH NEW CASTINGS FOR ALL ADJUSTED BASINS & MANHOLES EXCEPT WHEN SALVAGED CASTINGS ARE AVAILABLE & THEIR USE PERMITTED BY THE ENGINEER. A DEDUCTION OF \$1500 FOR EACH TOP SO USED SHALL BE MADE FROM THE ORIGINAL CONTRACT PRICE OTHERWISE THE SALVAGED CASTINGS MUST BE HAULED TO D.P.W. YARDS AT STATE FAIR & JOHN R. STS.
- ALL CURBS WITHIN STREET INTERSECTIONS TO BE SEPARATE TYPE II OR INTERVAL TYPE III, EXCEPT AS OTHERWISE NOTED.
- RAISE 1 SLAB OF WALK ON EAST SIDE OF FIELDING AT PLYMOUTH & 1 SLAB ON PLYMOUTH.

**BENCH MARKS**

- BLM# 11-253A S.E. COR. OF BRADLEY & PLYMOUTH
- BLM# 11-253B S.E. COR. OF FIELDING & PLYMOUTH
- BLM# 11-253C S.E. COR. OF WADSWORTH & FIELDING
- BLM# 11-253D N. E. COR. OF WADSWORTH & FIELDING
- BLM# 11-253E S. E. COR. OF FIELDING AT HOUSE #12080
- BLM# 11-253F N. E. COR. OF CAPITOL & FIELDING
- BLM# 11-253G S. E. COR. OF CAPITOL & FIELDING
- BLM# 11-253H 400 S. OF P.M.R.R. ON S. SIDE OF BURTT RD.

**NOTE:** P.L. OFFSET 5 FT. TO (+) IN WALK.

ELEV.  
 141.716 (REC.)  
 141.715  
 141.714  
 141.713  
 141.712  
 141.711  
 141.710  
 141.709  
 141.708  
 141.707  
 141.706  
 141.705  
 141.704  
 141.703  
 141.702  
 141.701  
 141.700  
 141.699  
 141.698  
 141.697  
 141.696  
 141.695  
 141.694  
 141.693  
 141.692  
 141.691  
 141.690  
 141.689  
 141.688  
 141.687  
 141.686  
 141.685  
 141.684  
 141.683  
 141.682  
 141.681  
 141.680  
 141.679  
 141.678  
 141.677  
 141.676  
 141.675  
 141.674  
 141.673  
 141.672  
 141.671  
 141.670  
 141.669  
 141.668  
 141.667  
 141.666  
 141.665  
 141.664  
 141.663  
 141.662  
 141.661  
 141.660  
 141.659  
 141.658  
 141.657  
 141.656  
 141.655  
 141.654  
 141.653  
 141.652  
 141.651  
 141.650

DETAIL AT (2)  
 SCALE 1" = 10'

53333