

102

SEWER	REVISIONS	OLD MAP 3-29-43
SUPPLEMENTARY DETAILS		
C-324A	C-587	C-739B
C-325	C-524	C-733
C-326A	C-585	C-739
C-327	C-566	C-739A

NOTE:  
 BEFORE STARTING CONSTRUCTION CONTRACTOR MUST CHECK WITH UTILITIES FOR LOCATIONS OF EXISTING STRUCTURES WHETHER OR NOT INDICATED ON PLANS.

PLANS SCALE DISTORTED  
 LOTS & ALLEYS 1"=100'  
 STREET WIDTHS 1"=50'

DRAINAGE COMPLETED  
 PAVING COMPLETED C.C. 11-7-50

QUANTITIES	ESTIMATED	FINAL
EXCAVATION CU YDS.	LOTS	CITY
NEW CURB 12 LIN FT.	604	395
PAVING 8:6:8 SQ YDS.	4	59
9" UNIF.	1736	138
9" UNIF.	418	1736
9" UNIF.	144	144
4" SQ FT	720	720
MANHOLE CONCRETE	25	25
ADJUST	1	1
CONCRETE	160	160
CONCRETE	310	310
CONCRETE	295	295

HOR. SCALE 1"=4'	VER. SCALE 1"=4'	DATE 12-1-49	DATE DRAWING 1-4-50
PLAN	PROFILE	COMPUTED	CHECKED
CHECKED	DATE	CITY	LOT
1/89,50	1/189,50	594,75	594,75

DESIGNED BY S.F. DAVIS

DRAWN BY *Arthur M. Mager*

TRACED BY *Arthur M. Mager*

CHECKED BY *Arthur M. Mager*

APPROVED BY *J. I. Baker*  
 ENGINEER OF STREETS

*Arthur M. Mager*  
 DEPUTY CITY ENGINEER

CONTRACT NO. RW. 1318 F

DEPARTMENT OF PUBLIC WORKS DETROIT

CITY ENGINEERS OFFICE - DIVISION OF PAVING DESIGN

STREET PAVING PLAN

FENMORE

S.P.L. OF HESSEL

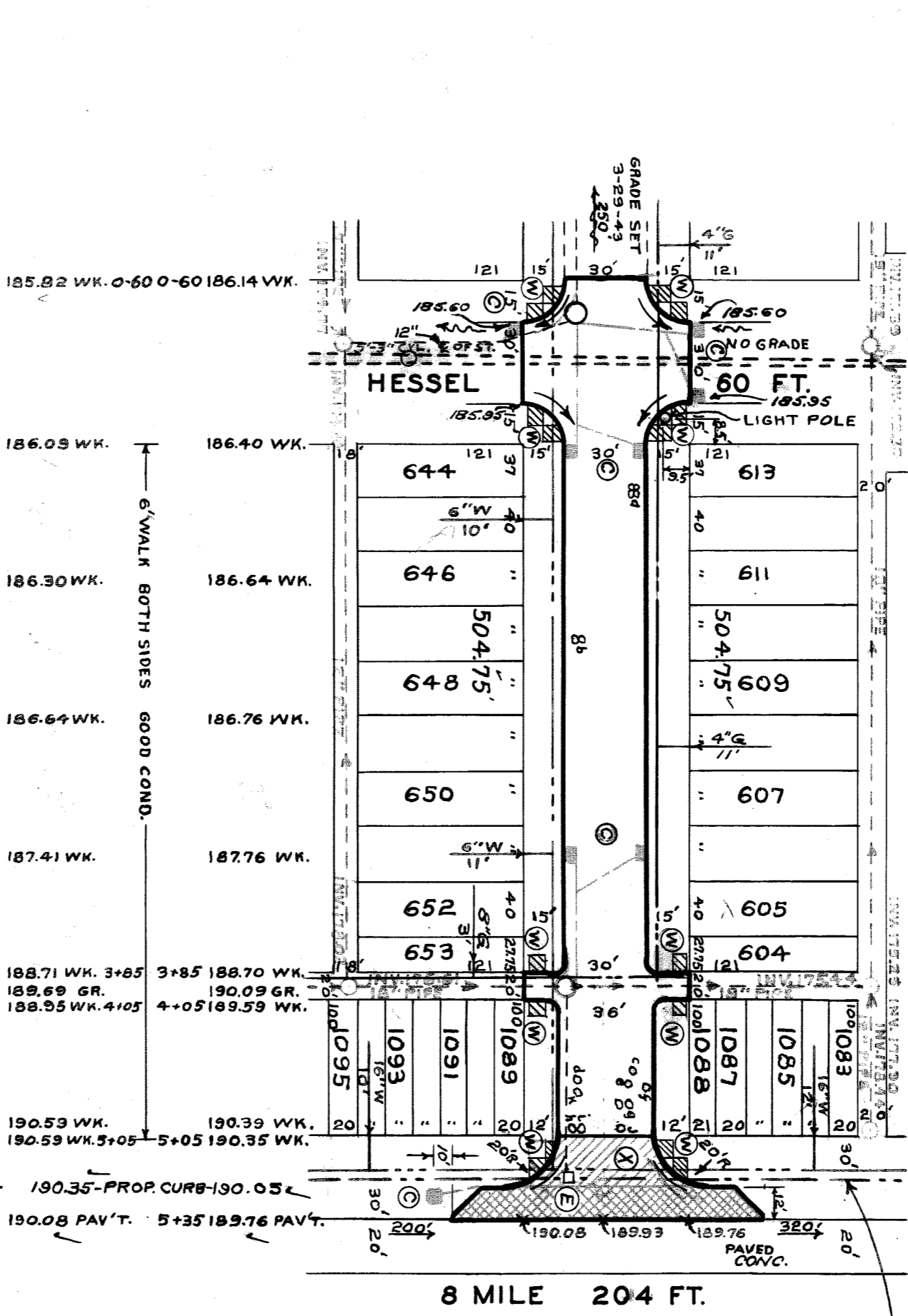
30' N. OF S.P.L. OF 8 MILE

ASSIGN NO. 325AE-21

REVISION NO. 8410

SHEET 1 OF 1

DATE 30 & 36'



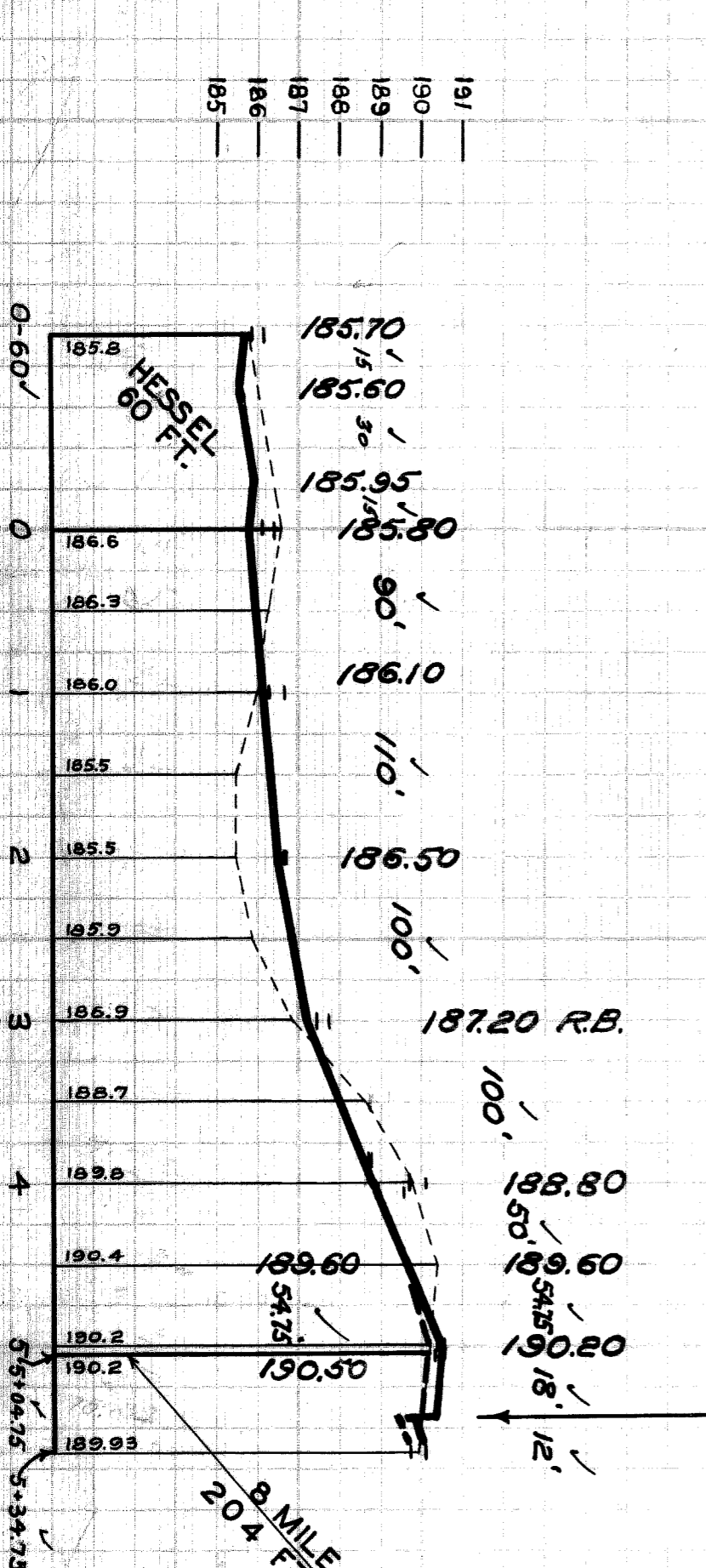
6" OIL LINE 14" N. OF S.P.L.  
 DET. SOUTHERN PIPE LINE CO.

**NOTES:**

- AT (C) CONSTRUCT 8 STD. PIPE CATCH BASINS WITH STD. FRAMES & GRATES AS REQUIRED. CONNECT TO EXISTING OUTLETS AS SHOWN. SEE STD. DWGS. C-326A & C-524.
- AT (E) ABANDON 1 EXISTING PIPE BASIN, PLUG AND REMOVE WITH CLASS "C" CONCRETE AND REMOVE OR FILL BASIN WITH CLASS "C" CONCRETE.
- AT (M) CONSTRUCT 720 SQ. FT. OF STD. 4" SIDEWALK.
- AT (X) CONSTRUCT 36 FT. RETURN OF 8" UNIFORM CONCRETE WITH TYPE II CURBS 20 FT. RADII AND 12 FT. WIDENING STRIP OF 9" UNIFORM CONCRETE. SEE STD. DWG. C-733.
- ADJUST TOPS OF 2 EXISTING SEWER MANHOLES - RECONSTRUCT CONE OF 1 SEWER MANHOLE, IF NECESSARY.
- ADJUST TOP OF 1 WATER MANHOLE.
- BACKFILL SEWER PIPE TRENCHES UNDER PROPOSED PAVEMENT, WITH APPROVED SAND - GRAVEL MATERIAL, ELSEWHERE FILL AND TAMP WITH APPROVED EARTH LAYERS AS REQUIRED.

**NOTES CONT.**

- CONTRACTOR SHALL FURNISH NEW CASTINGS FOR ALL ADJUSTED BASINS & MANHOLES EXCEPT WHERE SALVAGED CASTINGS ARE AVAILABLE AND THEIR USE PERMITTED BY THE ENGINEER.
- A DEDUCTION OF \$15.00 FOR EACH TOP SO USED SHALL BE MADE FROM THE ORIGINAL CONTRACT PRICE OTHERWISE THE SALVAGED CASTINGS MUST BE HAULED TO D.F.W. YARDS AT STATE FRAIR & JOHN R. STS.
- ALL CURBS WITHIN STREET INTERSECTIONS TO BE SEPARATE TYPE II OR INTEGRAL TYPE III EXCEPT AS OTHERWISE NOTED.



8 MILE 204 FT.

**STREETS TO BE REMOVED**

a	35' QUAD 6" FOR LARS 20' W. OF E.P.L.
b	143' TWIN 5" FOR LARS 20' W. OF E.P.L.
c	4+56 7" TREE 20' E. OF W.P.L.
d	4+62 6" TREE 20' W. OF E.P.L.
e	4+68 6" TREE 21' E. OF E.P.L.
f	4+70 4" TREE 15' E. OF W.P.L.
g	4+72 4" TREE 21' W. OF E.P.L.
h	4+82 4" TREE 23' E. OF W.P.L.
i	4+83 4" TREE 23' E. OF W.P.L.
j	4+96 3" TREE 20' W. OF E.P.L.
k	4+96 9" TREE 18' W. OF E.P.L.
l	4+99 8" TREE 25.5' E. OF W.P.L.

93913