

CONTRACT NO. PW 2507 W

DEPARTMENT OF PUBLIC WORKS DETROIT
CITY ENGINEER'S OFFICE DIVISION OF PAVING DESIGN
STREET PAVING PLAN

FENELON
N.P.L. OF AMRAD
16.45 N. OF S.P.L. OF EIGHT MILE ROAD

PET # 8011 M. ZUSSMAN
11-24-53
ASSIGN. NO. 265-BV-7
PETITION NO. 8011
SHEET 2 OF 2 SHEETS
RUBIN 30 0336

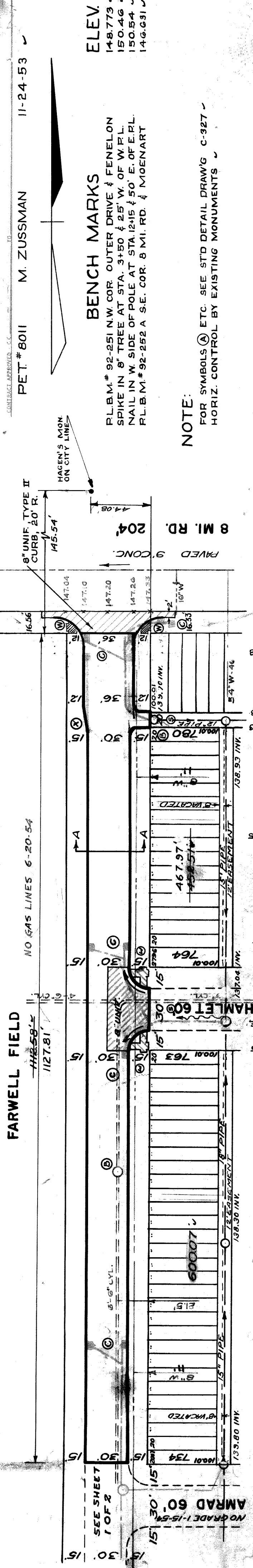
DESIGNED BY J. KING
DRAWN BY
TRACED BY
CHECKED BY BENN
APPROVED

BOOK 1778 PAGE 30
DATE DRAWING 1-24-54
DATE CHECKED 2-5-54
PLAN J.K. PROFILE G.M. COMPUTED N.K.
CHECKED J.K. GRADE M.L. CHECKED G.B.
LOT 2L LENGTH
CITY 2L LENGTH
TOTAL 2L LENGTH
COURT ADVERTISING
COURT INSPECTION

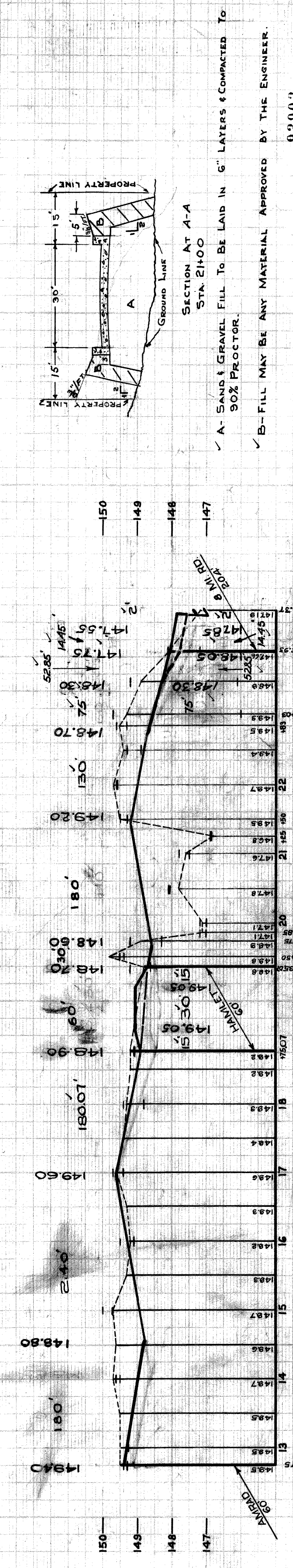
QUANTITIES
EXCAVATION CU. YDS.
NEW CURB LIM. FT.
PAVING SQ. YDS.
SIDEWALK SQ. FT.
MANHOLES ADJUST CONSTRUCT
BASINS ADJUST CONSTRUCT
SEWERS 12" LIM. FT.

NOTE: BEFORE STARTING CONSTRUCTION CONTRACTOR MUST CHECK WITH UTILITIES FOR LOCATIONS OF EXISTING STRUCTURES WHETHER OR NOT INDICATED ON PLANS.
PLAN SCALE DISTORTED
LOTS & ALLEYS 1" = 100'
STREET WIDTHS 1" = 50'
DRAINAGE COMPLETED
PAVING COMPLETED C.C. 1-11-55

SEWER LOCATION OF EXISTING MAINLINE ON REVISIONS FROM SOUTH SIDE 8-9-54, MD. CANY. OF DRAINAGE TO EAST W. N. ALLEY VACATED 8-5-54, J.K.
SUPPLEMENTARY DETAILS
C-324A C-390 C-587 C-739B
C-325 C-524 C-733 C-938
C-326A C-585 C-739 C-1000
C-327 C-586 C-739A C-1783



Profile view showing elevations and ground line. Includes labels like 'NO WALKS EITHER SIDE', 'NO WKS', and 'PAVMT 147.04'. Elevation values range from 147.04 to 150.54.



BENCH MARKS
ELEV.
148.773 ✓
150.46 ✓
150.54 ✓
146.631 ✓
FL.B.M. # 92-251 N.W. COR. OUTER DRIVE & FENELON
SPIKE IN 8" TREE AT STA. 3+50 & 25' W. OF W.P.L.
NAIL IN W. SIDE OF POLE AT STA. 12+15 & 50' E. OF E.P.L.
FL.B.M. # 92-252 A S.E. COR. 8 MI. RD. & MOENART

NOTE:
FOR SYMBOLS (A) ETC. SEE STD. DETAIL DRAWING C-327
HORIZ. CONTROL BY EXISTING MONUMENTS