

GROUP NO. 66-2 CONTAINER NO. 47737

**STREET PAVING PLAN
CITY OF DETROIT**

DEPARTMENT OF PUBLIC WORKS-CITY ENGINEERS OFFICE

NAME OF STREET **DESMOND**
FROM **1555 E. OF ERL WATERMAN**
TO **20 E. OF W.P.L. CASGRAIN**

TYPE OF PAVEMENT **10.8.10**
10.8.10 CURVE CHANGE-INTERVAL CURB
10.8.10 UNIFORM AT STREET INTERSECTION EXCEPT AS NOTED

PET. NO. BY **F.C.C.** DATE **10-30-62**

NOTE - FOR SYMBOLS SEE STANDARD DETAIL DRAWING C-409
BENCH MARKS ELEV.

P.B.M. 11-2524 N.E. COR. REGULAR & LIVERNOIS 109.870
P.B.M. 11-252 N.E. COR. REGULAR & CASGRAIN 109.451
C.B.M. ARROW ON HYDRANT S.E. CORNER
DESMOND & WATERMAN 113.36
C.B.M. ARROW ON HYDRANT S. SIDE OF
DESMOND BET. RADEMACHER & CASGRAIN 114.43

HORIZONTAL CONTROL
CROSSES CUT AT WATERMAN, RADEMACHER,
AND CASGRAIN SPIKE SET AT RADEMACHER,
ALL ALONG A LINE 5' N. OF THE S.P.L.
OF DESMOND.
ALL ALLEY RETURNS 100' RADIUS
ALL STREET RETURNS 20' RADIUS

AT \textcircled{K} REMOVE 7 LFT OF EXISTING CURBES
 $\Delta = 11' 20.4"$
 $R = 50$
 $A = 9.77$
 $T = 4.90$
 $\Delta = 18' 55.18"$
 $R = 25$
 $A = 4.17$
 $T = 1.89$



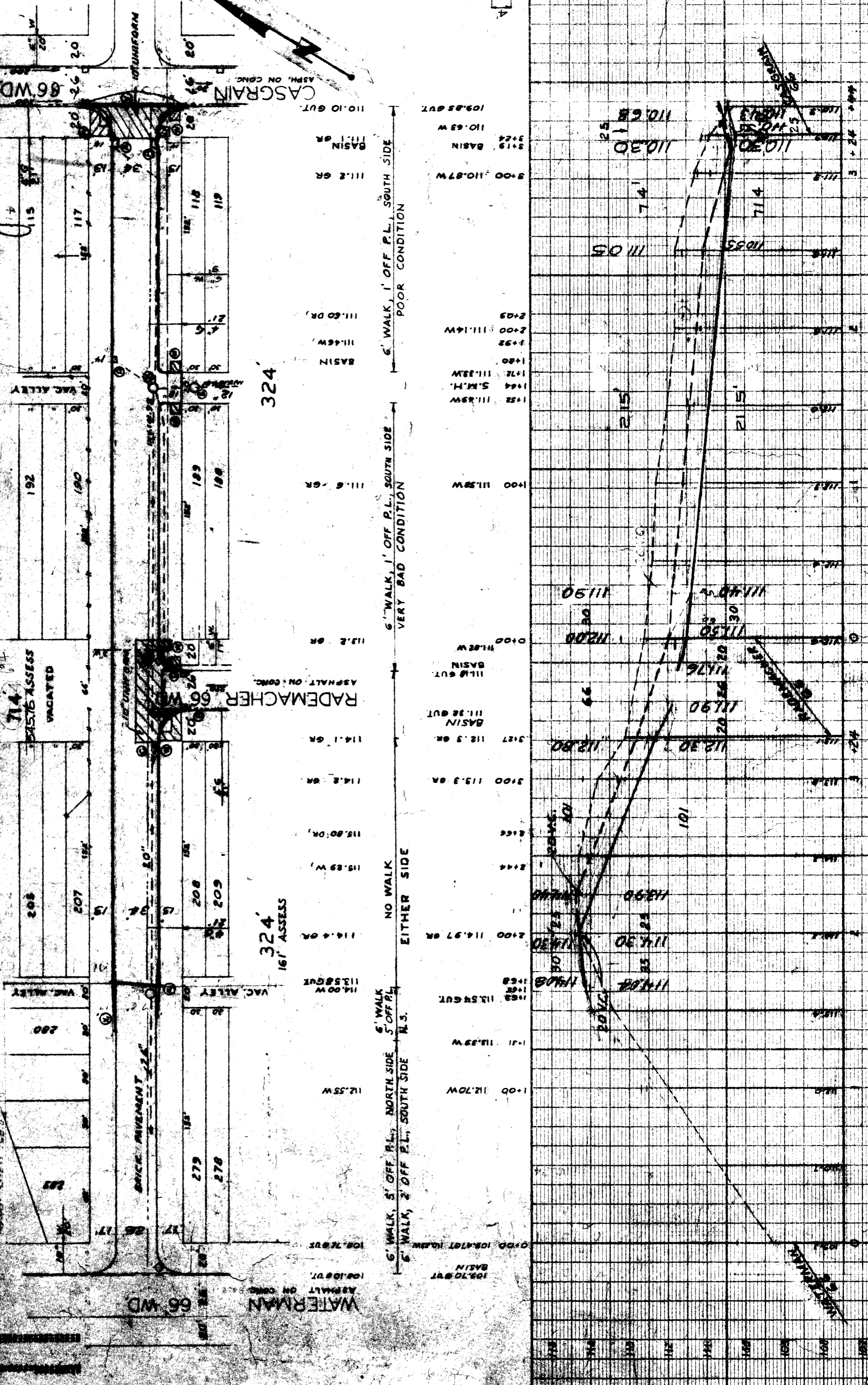
53	TOP	11	✓
<p>APPROVED</p> <p><i>[Signature]</i></p> <p><i>[Signature]</i></p>			

192	190	189	188
111.60 DR.	111.45 W.	BASIN	111.2 GR.

114.2 GR.	114.8 GR.	114.8 GR.	115.80 DR.	119.89 W.	119.80 DR.
114.1 GR.	114.8 GR.	115.3 GR.	115.3 GR.	115.3 GR.	115.3 GR.

114.00 W.	113.85 GUT.	114.4 GR.	114.9 GR.	114.9 GR.	114.9 GR.
113.55 GUT.	113.55 GUT.	114.9 GR.	114.9 GR.	114.9 GR.	114.9 GR.

12.55 W.	12.70 W.	12.70 W.	12.70 W.	12.70 W.	12.70 W.
12.70 W.	12.70 W.	12.70 W.	12.70 W.	12.70 W.	12.70 W.



NOTE TO ASSESSORS
CITY ASSESSORS SHOULD
REDISTRIBUTE ASSESSED COST
ACCORDING TO BENEFITS DERIVED
FOR A 30' RESIDENTIAL STREET

113	112	111	110
QUANTITY CHANGE			
EXCAVATION - 108 CYDS - 8 CYDS			

WATERMAN
CASGRAIN
RADEMACHER
DESMOND
W.P.L.